

MSU-O on Schedule For 1959 Opening

There are only three staff members, no faculty and no students, but Michigan State University-Oakland continues to grow on a beautiful 1,600-acre estate in southeastern Michigan.

"Sister" school to Michigan State University but virtually autonomous with its own faculty and administration, MSU-O will open its doors to a freshman class in the fall of 1959. Although students will not be accepted at this new school until sometime next year, Roy J. Alexander, MSU-O director of student affairs, has had many requests for information and applications for admission.

"We have received more than 150 requests for information and applications for admission from students in the Oakland-Macomb area," Mr. Alexander said. "We are also starting to get requests for information from students in other parts of the state and throughout the midwest," he added.

In addition, Mr. Alexander has been working with the community relations committee of the MSU-O Foundation, community leaders from the Oakland-Macomb area, and MSU officials on projects such as general information brochures, various administrative forms, entrance requirements and policies.

The main activity at MSU-O centers at the construction site on the northwest part of the campus. The first building will contain 39 classrooms, two large lecture rooms, four elementary and advanced chemistry and physics laboratories, a library, and administrative and faculty offices.

"We're right on schedule," comments George Karas, MSU-O supervising engineer. "The one-story wing of the building has been entirely bricked and almost completely roofed."

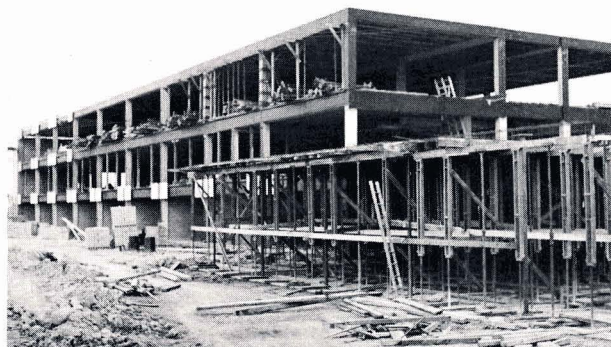
The three-story, or classroom, wing is being bricked and both the precast panels faced with marble chips and the precast panels with enamel facing are being placed, according to Mr. Karas.

The third staff member is Dr. Lowell R. Eklund, former M.S.U. head of the university conferences who now heads the MSU-O continuing education program. Dr. Eklund is responsible for co-ordinating MSU extension courses in southeastern Michigan, and for developing a conference program at MSU-O.

There are eight extension courses in education, home economics, history, sociology, English and basic college subjects being offered this term at the MSU-O Continuing Education Center, a converted farm building on the southwest corner of the campus. Enrollment in the extension courses has been high, with two of the classes boasting more than 50 students each.



Dr. Lowell R. Eklund, left, head of the continuing education program at MSU-O, talks with Luther Wilson of Pontiac, a student in one of the eight M.S.U. courses being offered at MSU-O this term.



Bricking has begun on the south end of the three-story, or classroom, wing of the first academic building at Michigan State University-Oakland.



George Karas, left, MSU-O supervising engineer, and Roy J. Alexander, director of student affairs, check specifications for the one-floor wing of the first academic building rising on the northwest part of the campus.