



SEHS Bulletin - December 15, 2017

1 message

School of Education and Human Services - Oakland University <jmschmalz@oakland.edu> Fri, Dec 15, 2017 at 2:09 PM

OAKLAND UNIVERSITY™

School of Education and Human Services



IN THE NEWS

Newest Addition to Pawley Hall

Coming up the fourth floor stairs, you might notice Pawley Hall's newest art installation. This display is a wonderful tribute to the School of Education and Human Services; showing both pride for the School and the University as a community. Many thanks to James Silvestri for photographing and designing the piece of art.



Holiday Books in the ERL

Looking for holiday books to share? Hanukkah, Kwanzaa and Christmas are all represented in the ERL's display of holiday books on the tables near the door. If you need to check a book out for use over the break and you are worried about returning it on time, check with one of the staff members and they will ensure the return date is for after break.

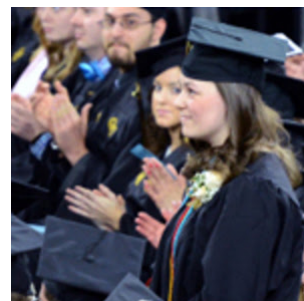
Remember, next week, the ERL will be closed in the evenings, M–TH. Happy holidays to all, and happy reading!



UPCOMING EVENTS

Fall 2017 Graduation Reception - December 16, 2017

Join the SEHS graduates for light refreshments and celebration at the graduation reception on December 16 from 2–4 p.m. in room 302 of Pawley Hall. The reception will take place after the graduate ceremony and prior to the undergraduate ceremony. Please [RSVP](#) if you plan on attending.



"Inner Engineering" Meditation Retreat - January 18–21, 2018

OU will be offering an on-campus meditation retreat, using "Inner Engineering," at the Golf Pavillion from January 18–21.

Inner Engineering is a method to engineer a deep and lasting personal transformation; helping individuals break through personal limitations, establish health and vitality, mental calm and clarity, and a deep sense of joy. Derived from ancient yogic science, it addresses every aspect of human well-being, from body, mind, and emotion to the fundamental life energy within us.



For those who've enjoyed Isha Kriya and want to take the experience further, it is a wonderful opportunity. The program is open to anyone age 15 and above. It is designed for the working person's schedule, including Thursday and Friday evenings, along with Saturdays and Sundays.

View the [flyer](#) for more information.

CELEBRATIONS

If you do not wish to have your birthday included, contact [Jennifer Schmalz](#).

ABOUT THE SEHS BULLETIN

The SEHS Bulletin is a place where faculty and staff can share news and celebrate the wonderful things happening in SEHS. The bulletin is the perfect place to share information about your publications and awards, special projects and committee news, as well as announce events.

All are welcome to send items for inclusion. If you choose to do so, please ensure that your items are print ready, that you include all related links, and that you have permission to publish any photos being submitted. Please put "SEHS Bulletin" in the subject line and email your information to: jmschmalz@oakland.edu.

If you have questions about the bulletin, email Jennifer Schmalz at jmschmalz@oakland.edu.

1/5/2018

Oakland University Mail - SEHS Bulletin - December 15, 2017

School of Education and Human Services

Pawley Hall
456 Pioneer Drive, Rochester, MI, 48309-4482

(248) 370-3050
oakland.edu/sehs

Manage your preferences or **unsubscribe**.
Not subscribed? **Sign up** to receive our future emails.
View this email in a browser.