

# Special Issue For Freshmen The Oakland Observer

MICHIGAN STATE UNIVERSITY OAKLAND

Vol. II — No. 16

FRIDAY, AUGUST 25, 1961

Rochester, Michigan

## SCHEDULE OF EVENTS FOR FALL SEMESTER

(Clip and Save)

All freshmen are urged to attend the Freshmen Convocation at 10 a.m., Sept. 5, in the Student Center. Dr. Donald D. O'Dowd, Dean of the University will address new students.

THURSDAY, SEPT. 5

10 a.m. — Freshman Convocation (Student Center)  
1:30 p.m. - 5 — Placement Testing (North Foundation Hall)

WEDNESDAY, SEPT. 6

Registration for sophomores and juniors

THURSDAY, SEPT. 7

Registration for sophomores and juniors  
8 a.m. — Classes begin

FRIDAY, SEPT. 8

8 p.m. — Chancellor's Reception for Freshmen (Student Center)

SUNDAY, SEPT. 10

3 p.m. — Parents' Convocation (Student Center)

FRIDAY, SEPT. 15

4 p.m. — University Picnic  
8 p.m. — Dance (Student Center)

SATURDAY, SEPT. 16

5 p.m. — Buffet Dinner and dance at Meadow Brook Hall; given by Mr. and Mrs. Wilson in honor of Freshmen

SUNDAY, SEPT. 17

2 p.m. — Welcoming Tea for Freshmen Girls (Student Center)

TUESDAY, SEPT. 19

Activities Day (Student Center)

THURSDAY, SEPT. 21

1:15 p.m. — First Program in Lecture-Concert Series (Student Center)

SATURDAY, SEPT. 23

10 a.m. — AWS Leadership Seminar (Student Center)

SATURDAY, SEPT. 30

8 a.m. — Au Sable River Canoe Trip

THURSDAY, OCT. 5

1:15 p.m. — Lecture-Concert Series Program (Student Center)

FRIDAY, OCT. 6

8:30 p.m. - 12 — Record Hop (Student Center)

SATURDAY, OCT. 14

8 p.m. — Hayride (Hayride Lodge)

THURSDAY, OCT. 19

1:15 p.m. — Lecture-Concert Series Program

FRIDAY, OCT. 27

4 p.m. - 9 — Student State Fair (Student Center)

SATURDAY, OCT. 28

2 p.m. — Continuation of fair  
8:30 - 12 p.m. — Carnival Dance (Student Center)

THURSDAY, NOV. 2

1:15 p.m. — Lecture-Concert Series Program

SATURDAY, NOV. 11

Roller-Skating Party

THURSDAY, NOV. 16

1:15 p.m. — Lecture-Concert Series Program

SATURDAY, NOV. 18

8:30 p.m. - 12 — Turkey Trot (Student Center)

WEDNESDAY, NOV. 22

Thanksgiving Vacation Begins (9 p.m.)

MONDAY, NOV. 27

8 a.m. — Classes resume

THURSDAY, NOV. 30

1:15 p.m. — Lecture-Concert Series Program

SATURDAY, DEC. 2

7:30 p.m. - 9:30 — Splash Party (Pontiac Northern High School)

FRIDAY, DEC. 8

AWS Toy Dance (Student Center)

THURSDAY, DEC. 21

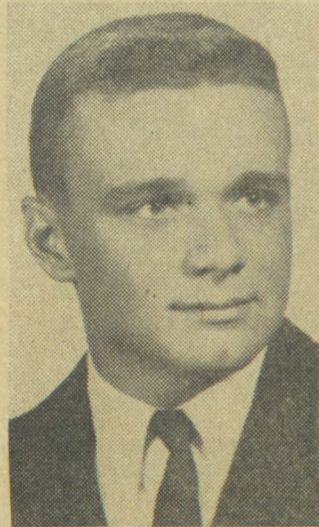
6 p.m. - 8 — AWS Christmas Party for Orphans (Student Center)

FRIDAY, DEC. 22

Last day of classes and close of Fall Semester  
6 p.m. - 1 a.m. — Christmas Dinner Dance (Student Center)

FRIDAY, DEC. 29

Registration for Winter Semester



HOWARD HINKEL  
Student President



D. B. VARNER  
Chancellor of MSUO

## NEW STUDENTS ARE WELCOMED TO MSUO

When MSUO opened in 1959, the first class was told that it had a clean slate on which to work and that the students could go to whatever ends they wished in order to put something valuable on that slate.

We had to endure the initial growing pains of a new university.

Your advantages are, per-  
(Continued on Page 4)

On behalf of all of us on the staff and faculty, I want to welcome you to Michigan State University Oakland, and to the most important years of your life.

You will be part of an exciting new venture in learning, the product of much thought by many able and distinguished persons. It is a sound program, designed to start you on the  
(Continued on Page 4)

## 42 Freshmen, 21 Others Awarded Scholarships

Foundation and tuition scholarships have been awarded to 42 freshmen, and 21 up-

perclassmen will receive advanced student scholarships, according to Victor Lindquist, scholarship director.

Foundation scholarships amount to \$500 (for two semesters), and tuition scholarships provide \$280, the tuition for two semesters. Advanced student scholarships are for varying amounts. All awards are renewable for satisfactory achievement.

Juniors receiving scholarships are Paul Garlick, Robert Gergle, Howard Hinkel, William Kath, Carl Mabee, Donald  
(Continued on Page 4)

## S-E Building Wing To Open

Two lecture halls, three laboratories and several classrooms will be added to MSUO's academic facilities with the next month of the west wing of the Science and Engineering Building.

The three-story structure is  
(Continued on Page 4)

## 'Dorms' On Estate, In Offices

MSUO is serious about its space age curriculum — so serious that it has arranged for male resident students to live temporarily, in the Science and Engineering Building.

Conversion of the third floor of the west wing of the new building into a dormitory began when University administrators learned that the dormitories cannot be completed by Sept. 1, the original target date.

Beds for the men will be set up in the science library, an atmosphere appropriate for space age scholars.

Pairs of men will share each of the faculty offices, which will be equipped with tables, chairs, and wardrobes. Waist-to-ceiling windows in the offices provide light and ventilation — and an unexcelled view of the campus.

There are adequate lavatory facilities, and showers are being installed.

Women students living more than 30 miles from the campus will live on the 400-acre estate of Charles E. Wilson, former president of General Motors.

The accommodations, described as a "year-round  
(Continued on Page 3)

## Women's Hours Set

Hours for women residents determined at a recent meeting of the Associated Women Students, have been approved by Dean of Students Duncan Sells.

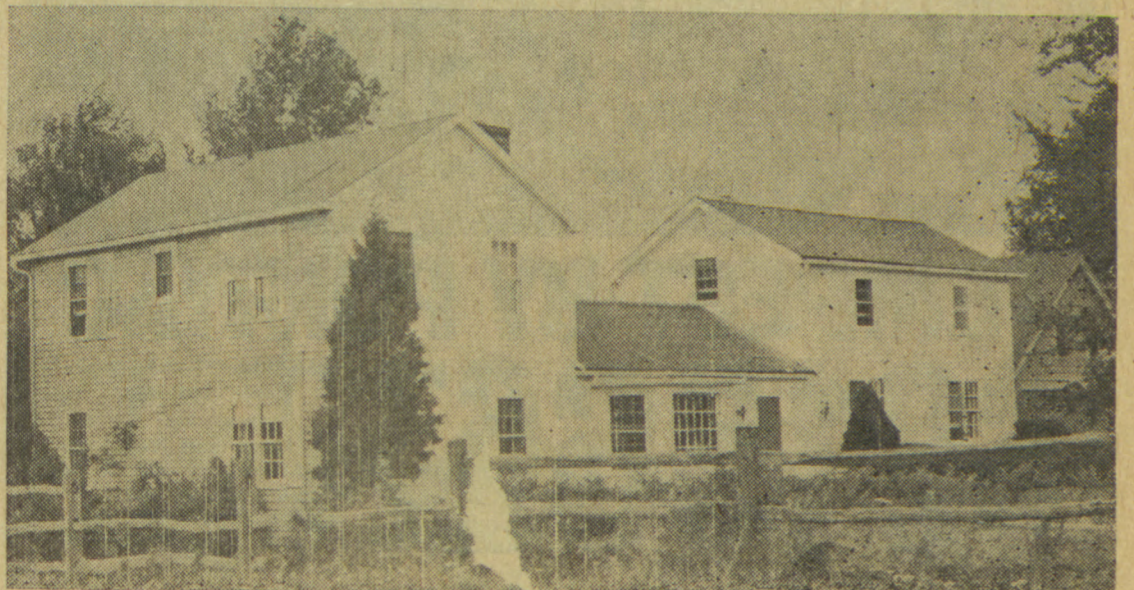
They are:

Closing hours: Sunday through Thursday, 10:30 p.m.; Friday, 1 a.m.; Saturday, 1:30 a.m.

Special late permits (up to 2:30 a.m.) must be obtained from Dean Sells.

Quiet hours: Sunday through Thursday, 8:00 p.m. - 6:00 a.m.

Visiting hours: 1 p.m. - 10 p.m. every day. Men are permitted in the lounge only.



TEMPORARY DORMS FOR WOMEN ON THE 400-ACRE C. E. WILSON ESTATE



**The Oakland Observer**

Vol. II — No. 16



August 25, 1961

MEMBER

Published Biweekly at Rochester by the Students of Michigan State University Oakland

Editor ..... Susan Bierstein  
Advertising Manager ..... Roger Finzel

# Barn Council Studying Conversion Of Building

By Susan Bierstein

"I can assure you that we will not remove the dairy barn from the premises until you have had ample opportunity to work out the details for its use," Chancellor Varner told the Barn Council recently.

The Barn Council, composed of five students and five from faculty and staff, was appointed by the Chancellor last spring to study costs of conversion of the dairy barn into a theater and to make plans for its use. The group was also asked to find ways to finance the renovation and to arrange for maintenance.

The idea materialized last spring when a group of students including Council members Shelagh O'Rourke and Kay Lorentzen called attention to the need for theatrical facilities at MSUO. (At the present time there is no place suitable for the presentation of a play). The group suggested the dairy bar behind the new Science and Engineering Building. A part of

the Meadow Brook Farms, the dairy barn has been empty since Mr. and Mrs. Alfred G. Wilson gave their estate to the University.

Like the barns used for summer stock, the students thought the loft of this one, with its hexagonally arched roof, would create an ideal atmosphere for theatrical productions.

An editorial in the OAKLAND OBSERVER, "Senseless Death in the Barnyard," brought the idea to the attention of the University and underscored the major drawback to the project: the impending demolition of the dairy barn and other buildings surrounding it.

George Karas, director of the MSUO physical plant and a council member, is drawing up further estimates of renovation costs.

Only the loft will be renovated at this time. The first floor of the barn will not be converted immediately.

# List Student Campus Jobs Available

Shelving books, gardening, operating the switchboard, tutoring, secretarial work, washing dishes and waiting table, and photographing for University publications are some of the part-time jobs which will provide MSUO students with tuition money or extra cash this year.

More than 300 jobs will be available, some for a day or a week, others for the full year. Some of these are:

- Motor pool: running errands (in a University vehicle) for faculty and staff; driving to the metropolitan airports to pick up faculty and staff making on business trips. Drivers are on call, working an indefinite number of hours each week. Four openings

- Admissions Office: clerical work — sending out grades, answering telephone, assisting with processing of admissions and registration. Two openings.

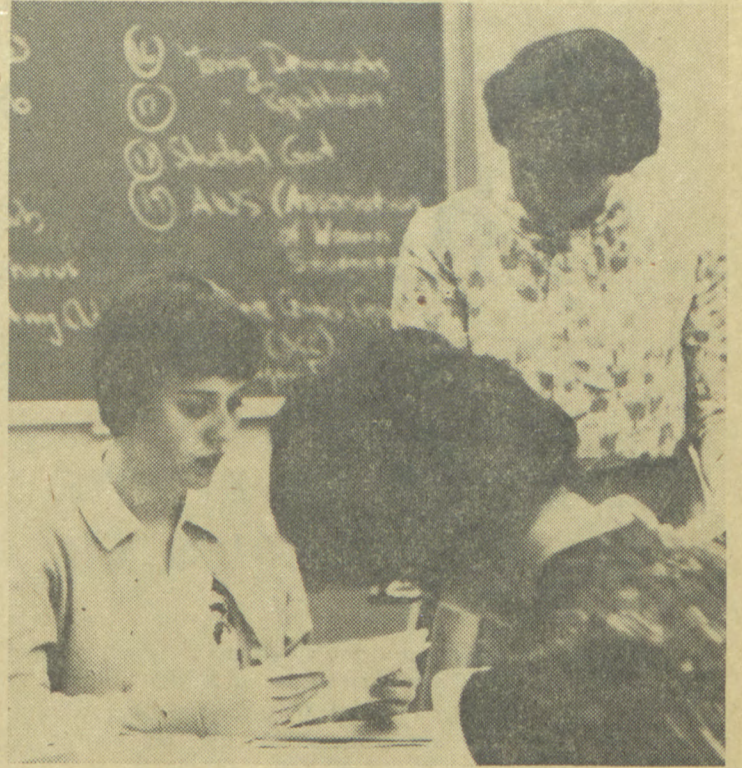
- Language Laboratory: monitoring sound equipment and aiding students in using facilities. Three openings.

- Mailroom: collecting University mail from Rochester post office mornings and afternoons, sorting and distributing it to various offices. One opening.

- Modeling for Continuing Education art classes. Two needed.

- Boiler room: drafting and minor mechanical repairs. Three openings.

- Intramural office: maintenance of sports equipment.



JOAN GIBB (LEFT) INTERVIEWS FRESHMEN  
Miss Gibb works for the MSUO admissions office

OBSERVER PHOTO

Two or three openings.

- Office of Information Services: clerical work, news writing, and photography. Inquire at office.

- Tutoring for math department. Two openings. Three "checkers" and one clerical worker also needed.

- Waiting tables in faculty dining room and for special luncheons and dinners. Thirty waitresses, 12 waiters needed.

Off-campus jobs — office work, babysitting, sales promotion, waiting tables, yard work — were arranged for 31 students last year by the Office of the Dean of Students, which has charge of all student employment.

Part-time on-campus jobs for 226 students were available.

The University is employing 25 students this summer in clerical, maintenance and secretarial jobs. Some of these are the library, the psychology de-

partment and the switchboard.

Thirty-three students are employed at camps, resorts, restaurants, offices and in industry this summer, in cities as far away as New York and Denver.

Students may file applications for part-time employment after they have received their class schedules.

## University Book Store

Oakland Student Center Lower Level

Summer Hours 8:30 a.m. — 4:30 p.m.

Fall Hours — 8:30 A.M. - 7:30 P.M.

Avoid the Rush — Get Your Books Early

## AVON TAXI

RADIO DISPATCHED

STUDENT RATES

PHONE

Olive 2-6311

OR

Olive 2-4587

ROCHESTER

May We Help You  
With  
Records of All  
Categories

ROCHESTER  
RADIO & TELEVISION  
430 MAIN STREET  
Olive 2-2141

## Greyhound Bus Lines

Transportation From

YOUR HOME TOWN TO THE  
DOORS OF MSUO

Operators of Beeline, Great Lakes Transit, and Greyhound

For Further Information In This Area Call . . .

FE 4-2515

PONTIAC, MICHIGAN

## Knapp's



HOME OF THE FAMOUS

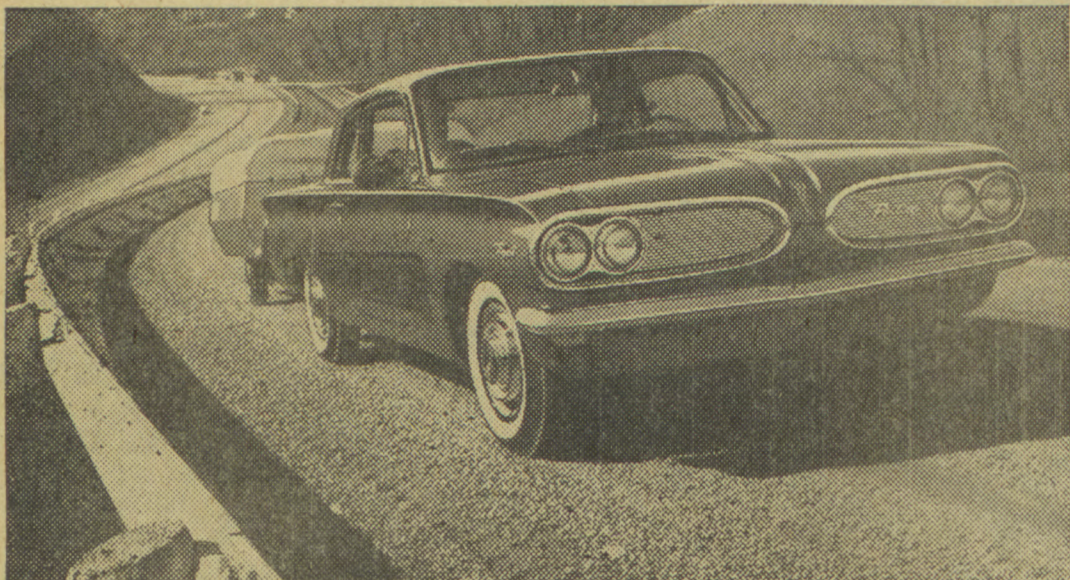
"NAPBURGER"

RESERVE OUR TOWN ROOM FOR  
BANQUETS — WEDDINGS — MEETINGS

327 Main Street

Rochester, Mich.

Olive 1-8411



## TEMPEST BY PONTIAC

# \$215663

(Manufacturer's Suggested Retail Price for coupe shown.)

Includes whitewall tires, custom wheel discs, Federal Excise Tax and suggested dealer delivery and handling charge. Other accessories and optional equipment, transportation charges, state and local taxes are additional.

SEE PONTIAC'S TEMPEST AT YOUR LOCAL AUTHORIZED PONTIAC DEALER



# Scientist, Actor In L-C Series

A concert pianist, a Nobel prize winning scientist, and a celebrated actor will participate in the 1961-62 Lecture-Concert Series, Dr. Gerald Straka, coordinator of the program, announced.

Through an arrangement with Pontiac Northern High School, four performances will be staged in the high school auditorium. Eight will be held at MSUO.

Emil Dannenberg, a pianist who rejected a concert career to teach at Oberlin College, will appear here.

Dr. Linus Pauling, the Nobel prize winning chemist, also is scheduled for a program at MSUO. Pauling, a professor at the California Institute of Technology, is a member of the Scientists' Committee for a Sane Nuclear Policy.

Actor Charles Loughton will give a program of readings at Pontiac Northern on Jan. 26.

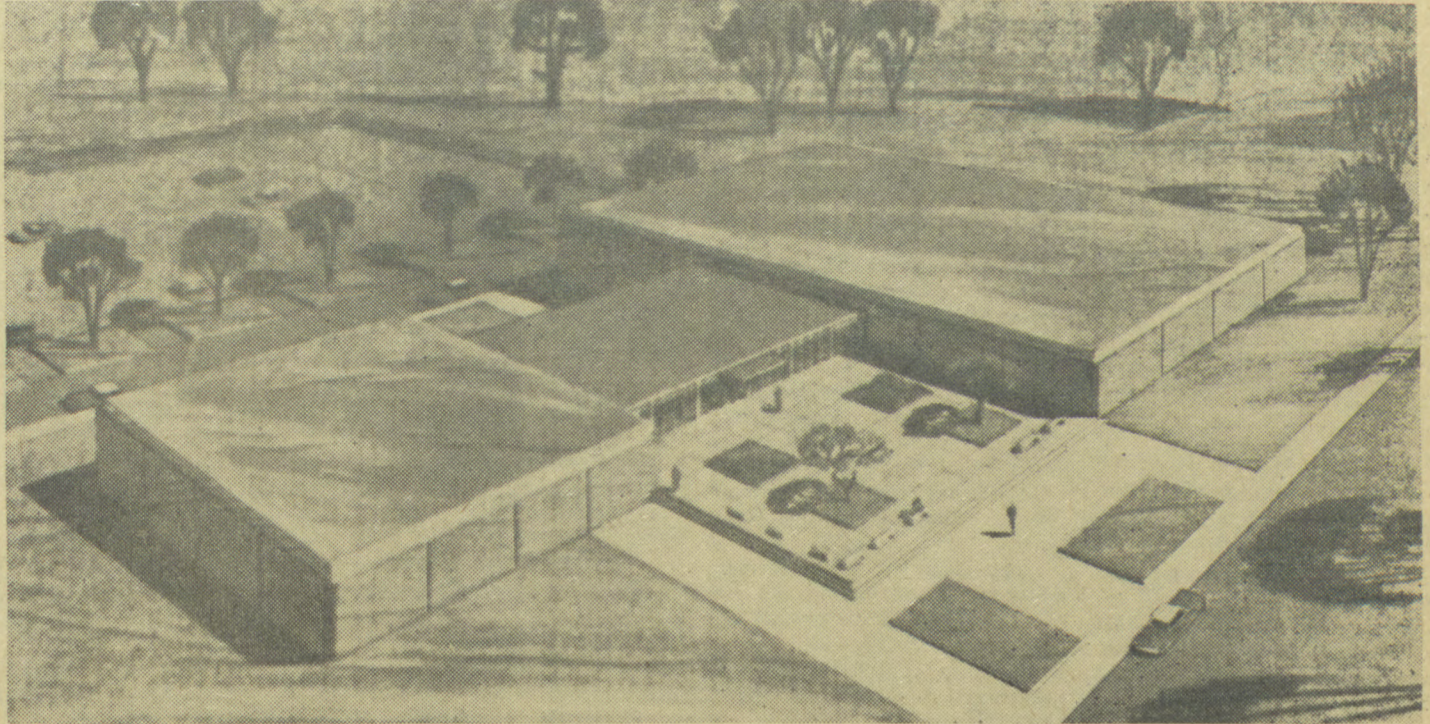
Others appearing at the high school will include violinist Eugene List, Nov. 7; soprano Jennie Tourel, Jan. 8; and the Minneapolis Symphony, March 3.

Scheduled for on-campus are performances by the University of Michigan Glee Club, the Stanley String Quartet, and the Oberlin College Choir. A poet and a symposium also may be included in the Lecture-Concert program.

Dates for the on-campus events have not been set.

A package charge of \$5 will be made to students for the off-campus events. There is no charge to students for on-campus programs.

A \$10 ticket will admit the public to all four off-campus events.



ARCHITECT'S DRAWING OF THE INTRAMURAL BUILDING, TO BE OPENED IN SEPTEMBER, 1962

3 BASKETBALL COURTS, T-SHAPED POOL

## CAMPUS SPORTS BUILDING TO GO UP

A slope 200 yards east of the Student Center will be the site of groundbreaking ceremonies

### TEA TO HONOR 'LITTLE SISTERS'

"Little sisters" will be greeted at a tea given Sunday, Sept. 17, by the Big Sister Council of the Associated Women Students (AWS) of MSUO.

Little sisters are freshmen girls who have requested the aid of a big sister (an upper-class girl) in adapting to college life.

"Big sisters are expected to spend time acquainting the little sisters with the University and helping them with problems." Beverly Donato, Big Sister Council chairman, explained.

this month for the MSUO Intramural Building.

The 2,500-student capacity building, constructed of pink brick to harmonize with existing structures, will resemble a dumbbell in shape, except that the end units will be square.

## Sports, Dancing Offered

Although MSUO does not require students to participate in a physical education program, the University has an athletic program embracing a wide range of activities.

Equipment for 20 sports is available, and instruction is offered in ballroom dancing, fencing, judo, archery, basketball, bowling, field hockey, golf, modern dance square dancing and weight-lifting.

Students may compete in league or tournament sports including archery, bowling, basketball, fencing, football, golf, softball, table tennis and volleyball.

A student resident committee will help to formulate an athletic schedule for students living on the campus, Hollie Lepley, director of physical education, said.

He suggested one night of athletic activities per week for men and one for women, with a coed sports night twice a month.

Students interested in assisting with the recreation and sports program should apply to Lepley.

A glass-enclosed hallway will join the two units.

There will be a gymnasium large enough for three basketball or volleyball games to be played simultaneously.

A central upstairs area will house staff offices, meeting rooms and a dance floor. Office space will be provided for student athletic assistants.

Facilities for archery, handball, badminton, fencing, weight-lifting and gymnastics will be located downstairs.

A T-shaped swimming pool will be graduated from three

to 12 feet in depth, with two, one-meter diving boards in the cross-bar of the T. Bleachers and a third diving board may be added later.

The women's locker room will be equipped with full-length mirrors and hair dryers.

Athletic activities will be adjusted to student convenience, with capacity use of the facilities planned for the early afternoon hours.

The building will be financed on a self-liquidating basis. Target date for completion is September, 1962.

## Temporary Dorms

(Continued from Page 1) "camp", are 12 miles from the campus.

Because of limited space, women living within 30 miles of the campus have been asked to commute from their homes until the dormitories are completed.

University officials expect the buildings to be ready for occupancy about Oct. 15.

Bus service to the campus from the "camp" will be provided beginning Sept. 4.

Legislative approval for construction of the dormitories was expected in April but was withheld until May, reducing available construction time from five to four months.

**PORTRAITS WEDDINGS  
I.D. PHOTOS**  
No Appointment Necessary  
**VARDEN STUDIO**  
23 E. Lawrence St., Pontiac, Mich.

## LAKE JEWELERS

309 Main Street

OLive 6-2931

We are in business to be of Service to you. Our door is always open whether you wish to shop, browse or just make conversation. I hope you will drop in and make yourself known.

*Lloyd Lake, Jr.*  
"Rochester's Oldest Jeweler"

## BANK AT . . .

*Community*  
Most People Do

*Mitzelfeld's*

*Welcomes*

### Students of MSUO

- Campus Fashions for Men and Women
- Nationally Known Merchandise
- Plenty of Free Parking
- Charge Accounts and Lay Away Plans Available
- Open Daily 9-6, 9-9 Each Friday
- Formal Wear Rentals

*Mitzelfeld's* department store

in downtown Rochester