

WEDNESDAY

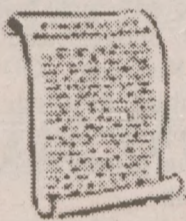
June 11, 1997

Award-winning independent newspaper  
The Oakland Sail, Inc.

INSIDE

It's not everyday that the student body and faculty get a chance to represent OU at the state capitol in Lansing.

Thanks to the efforts of Rochelle Black, director of government relations, approximately 75 OU students attended the first annual OU Day at the Capitol.



-Campus News Page 2

Rochester's Barnes & Noble bookstore is hosting a Performing Arts Extravaganza fundraiser this weekend to benefit MTD's efforts to renovate the seating at the Studio Theatre and Varner Recital Hall.

The same seating that was installed at the theatre's construction in 1971 is still there, 26 years and thousand of performances later.

-Features Page 6

On May 13 an era in women's basketball at OU was about to get under way.

Beckie Francis was introduced as the new head coach for the pioneers.



-Sports Page 4

POST INFORMATION

Volume 22 - Issue: 29 - 6 pages  
2,500 campus circulation  
Free of charge  
Rochester, MI 48309

EDITOR IN CHIEF (248) 370-4268  
NEWS (248) 370-4267  
FEATURES (248) 370-4266  
SPORTS (248) 370-4263  
ADVERTISING (248) 370-4269  
PHOTO/WEB (248) 370-4265

via e-mail oakpost@oakland.edu

THE OAKLAND POST

FOR MORE THAN 20 YEARS

# THE OAKLAND POST

WEEKLY CAMPUS NEWSPAPER

Student animal activist speaks out about Post editorial view of releasing mink into the wild.

-Opinion Page 3

## Board hikes tuition again

By LAURA SCHILDT  
Staff Writer

Tomorrow the OU Board of Trustees will vote on an agenda requesting approval of a three year General Fund Budget plan increasing tuition fees and adding a recreation fee.

The agenda proposes an

increase of 3.9 percent on tuition each year for 1997-98, 1998-99 and 1999-00.

Paul Bissonnette, vice president of finance and administration, said most universities raise tuition fees yearly at an average of 3 to 8 percent.

Last year an OU undergraduate student taking a lower level

course paid \$107.50 per credit hour. With the proposed increase of 3.94 percent, a student will pay \$112 per credit hour this fall and \$121 in 1999-2000.

"Our tuition is under the average for the state," said Bissonnette.

In comparison, Wayne State University's (WSU) current tuition is \$105 per credit hour, and the U-M-Dearborn's is \$145 per credit hour, which is under review for next year.

The percentage of OU's increase on tuition fees is based on the cost it takes to run the university per year with 80 percent of the budget spent on faculty and staff, said Bissonnette.

Last year, 13,956 students were enrolled at OU, up 356 students from 1995-96. This year, OU is projecting an enrollment of 14,200 students this fall.

According to Bissonnette, OU is the second fastest growing

university in the state.

OU's estimated enrollment growth of 8.26 percent from 1993-94 to 1996-97. Grand Valley leads with 12.79 percent.

According to Bissonnette, the tuition increases are to accommodate the growth.

Also starting in fall 1998, with the completion of the new Recreation and Athletic Center, each student may be charged a proposed recreation fee of \$75 for the fall and winter terms and \$47.50 for the spring and summer.

If passed, a student taking classes throughout the four semesters could pay over one year a recreation fee of \$245.

Most students must pay the fee, said Bissonnette.

The only exception would be students taking all extension courses with no classes on campus. These student will be able to purchase a rec pass.

"Having a physical disabili-

ty, I resent that my money would go toward a facility that I would never use," said Anthony Butina, general studies senior.

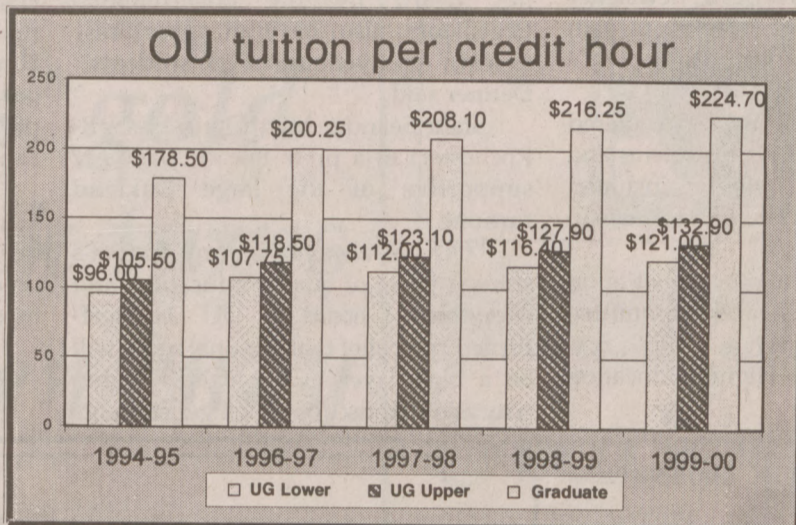
Butina, who injured his leg during a fall, said, "I would like to see more funding going into making the campus more accessible to all students."

Neither WSU or U-M Dearborn charge students a recreation fee.

Along with the increase in tuition fees and the new rec fee, the general service fee currently at \$112 per semester is proposed to increase 3.57 percent in 1997-98, 3.45 percent in 1998-99 to \$120 and 4.17 percent in 1999-00 to \$125.

The general service fee is five fees in one and charged to every student for every semester registered. The fee includes a \$42 enrollment fee, a Graham Health Center fee, a sports center

See TUITION page 5



## Shooting on location at OU

Ford Motor Company brought a crew to campus Monday to shoot three commercials aimed at not only promoting three of its new 1998 vehicles, but also to provide OU with media coverage.

Though Ford seemed to reach its first goal, OU may have fallen short with media coverage to promote the university. Some bystanders and OU students were concerned when actors displaying Wayne State University (WSU) paraphernalia seemed to be the focus of one commercial shoot.

According to Stu Hyke, assistant director of auxiliary services, Ford decided to use WSU items in order to make the most out of its lease from OU.

The purpose of its recent ad campaign was for Ranch Exit Films, from Los Angeles, California, to film as many different areas in the tri-county area as possible in ten days. By having actors wear WSU clothing and cheerleading uniforms, Ford was able to give the impression the commercial took place at WSU, said Tom Jacob, location manager.

Many students participating, however, were dissatisfied with the allowance of WSU to be displayed in a commercial at OU.

"I think it's false advertising and misrepresentation of our college, even if we were paid for it," junior psychology major

Kori Kneipp said.

Hyke, however, said to think of the actors as visiting cheerleaders.

Hyke also said OU was not left out and that the university was paid \$1,250, plus police reimbursement, by Ford for use of the campus. In addition, a location credit would be included at the end of each commercial aired.

Though the focus of the commercial were on the six paid actors from the Talent Shop of Birmingham, OU student volunteers also got a taste of stardom.

This shoot took place in front of Hamlin Hall just before 10 a.m. Monday. Several students were asked to pretend to be happy, energetic college students who were socializing between classes in front of the residence halls.

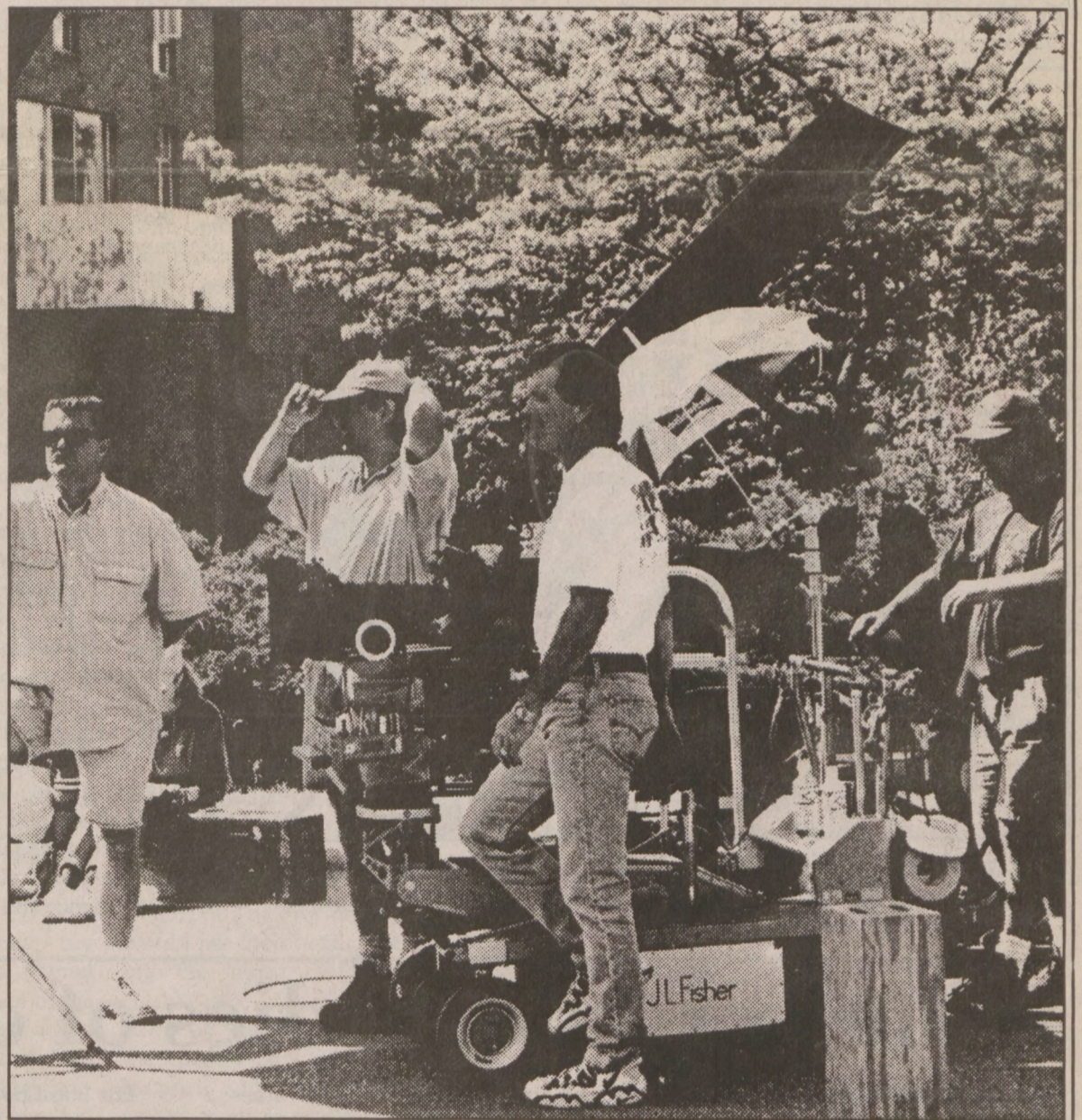
Many students seemed to enjoy the experience, including senior communications major Tracy Clucas.

"It was a unique opportunity for OU students to get an inside look at the glamour of TV, especially since that's the field I'm going into," Clucas said.

Other students, however, complained of treatment from the filming crew.

"I was insulted when they told me I could eat lunch for free, and ten tried to get us to

See FORD page 5



Post Photo/Jeanne Kirkaldy

THAT'S A RAP: Ranch Exit Films of Los Angeles, CA, visited OU to produce commercials to promote Ford Motor Company's 1998 Escort, Taurus Windstar Van and VX2 sedan. The commercials will air in the tri-county area.

## No leads developed in CSC

By JAIME SHELTON  
Editor In Chief

OU Police are in a waiting period and have exhausted an investigation into one of five criminal sexual conduct (CSC) allegations reported to police since the Fall 1996 semester.

According to Lt. Mel Gilroy, no leads developed, despite hopes of generating tips from an Oakland County Police Department composite sketch publicized last April.

The complainant did not report the incident until March, despite the allegation that the CSC occurred last October. However, Gilroy said this lapsed time does not necessarily make her claim less truthful.

According to the police report, the com-

plainant met the suspect off campus, but later the two went back to her on-campus residence when the incident allegedly occurred.

The original report described the suspect as a white male in his mid-20s. He is approximately 5' 10" tall with a thin build. He is also described as clean-shaven with heavy acne around the neck and chin area. He has light blond spiked hair and closely shaven around his ears.

Gilroy said OU Police are hopeful a suspect will be caught, but unless leads develop, there is little chance of making an arrest.

Gilroy said the other four CSC's are closed. Police have either made arrests or complaints have been withdrawn.

There have been no more CSC's reported on campus since February.

## Fast Facts

- June 6 turned out to be a great day for graduation. The windy but sunny 70 degree day was Aside from it being nicest day in a long time, it also turned out to be the biggest graduation class in OU history.
- There were 20 percent more graduates than last year. Roughly there were 2,050 graduates with 1,220 in attendance at Saturday's five different ceremonies. A rainbow concluded the record breaking day at the College of Arts and Sciences ceremony.
- Stephan Sharf, former Chrysler Executive VP, and his wife Rita, recently donated \$2 million to OU to build a second golf course.
- The Sharfs hope the contribution will provide growth and new opportunities.
- A crane operator setting tiers for the roof of the new rec center was temporarily blinded by the sun's glare and knocked over four tiers in a domino effect accident. No one was injured and the incident should not delay the targeted Fall, 1998 opening.