

---

OU OFFICIAL: A Grizz Facts look at transfer student retention rates

1 message

---

Thu, Jan 24, 2019

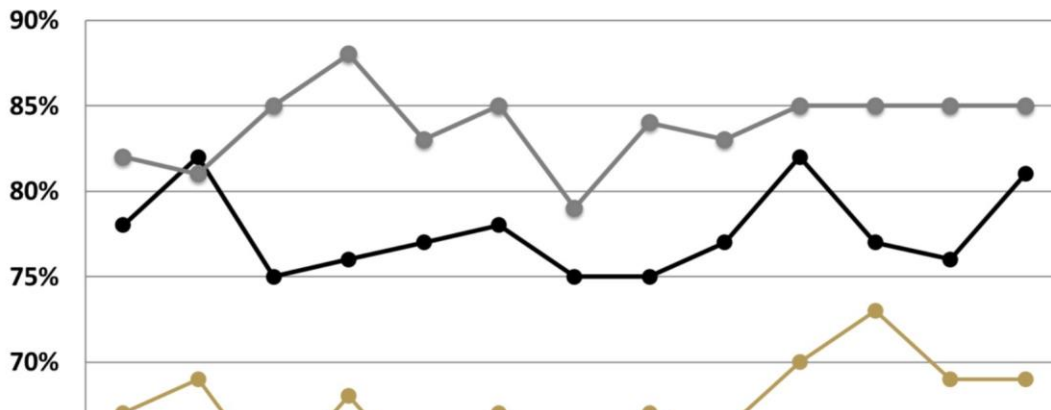


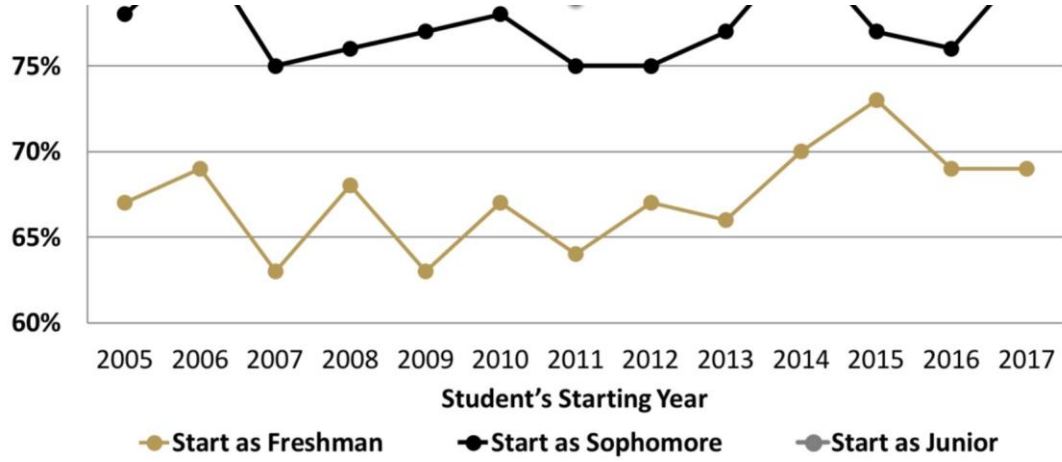
From the  
Office of Institutional Research and Assessment

Grizz Facts: A look at transfer student retention rates

The graph below shows the trend in first-year retention rates for full-time transfer students by class standing at the time they enroll at OU. Students who transfer with more credits have higher first-year retention rates than students who transfer with fewer credits. The trend for transfer students who start as juniors has been steady for the past five years, while trends for transfer students who start as freshmen and sophomores are more variable.

Transfer Student Retention Rates by Starting Year





Oakland University  
Office of Institutional Research and Assessment

Wilson Hall, Room 512 371  
Wilson Blvd.  
Rochester, MI 48309-4486

(248) 370-2387 [oir@oakland.edu](mailto:oir@oakland.edu)  
[oakland.edu/oir](http://oakland.edu/oir)

