

August 10, 1976

Office of the President OAKLAND UNIVERSITY

CONTINUUM CENTER GETS GRANT

The Administration on Aging has awarded a grant of \$236,773 to the Continuum Center for Adult Counseling and Leadership Training at Oakland University. The federal funds will allow special counseling and training programs, pioneered at the center, to be extended to individuals and groups in Michigan.

The grant was approved and recommended by the Southeast Michigan Council of Governments, which verified the need for preventive mental health services to older adults. The Administration on Aging, part of the Department of Health, Education and Welfare, awarded the grant under the Model Projects on Aging Program of the Older Americans Act.

The primary purpose of the Continuum Center project is to help older American adults adapt their living skills in a positive way to a new stage of life. It will provide group workshops for individuals, leadership training for older adults who counsel their peers, and special programs for professionals who are already serving the older population.

KRESGE GRANT AIDS FESTIVAL

Oakland University has received a \$145,000 grant from the Kresge Foundation to support a program of road, building, and landscaping improvements in the Meadow Brook Festival grounds and the Baldwin Memorial Pavilion.

The funds will be used for pavilion improvements including roof repair, landscaping and structural modifications, renovation of the box office area, road improvements, parking expansion and lighting, and landscaping of the box office and picnic areas as well as for the main festival entrance on Walton Boulevard.

"The generous gift continues a long tradition of Kresge Foundation support for the university and its programs," President Donald D. O'Dowd said. The \$1.5 million Kresge Library was an early gift. Recent foundation gifts were \$180,000 for improvements in Meadow Brook Hall and \$30,000 for renovation and reroofing of the pavilion stage house area.

NEWS SERVICES WILL PUBLISH DAILY CALENDAR

As an aid to internal communication, the News Services will begin publication of a new daily calendar this fall.

The calendar will list major events of each day, and it will be made available by midmorning at Charlie Brown's, campus bulletin boards, and other high traffic areas on campus. The

Continued, page 2



OU NEWS

ROCHESTER, MICHIGAN

CAMPUS MAPS ARE HERE

The new Oakland University campus maps have arrived. A copy is included in this issue of the OU News.

Additional copies can be obtained by contacting Alice Maish, room 101, North Foundation Hall, 377-3504.

SAIL SEEKS ADS

The Oakland Sail, student newspaper, will publish a special back to school issue for the fall semester. The special edition will be available August 27 for distribution at fall registration.

University offices or departments that are interested in advertising in this issue should contact the Department for Student Organizations and Campus Programs at 377-3580 no later than Friday, August 13.

Continued, page 1

daily calendar will supplement the longer listings that will continue to appear in each OU News.

The News Services will get much of its calendar information from the Department of Student Organizations and Campus Programs, and the community is urged to keep that office aware of activities on campus.

Persons who want external news coverage of their events are asked to get the information to the News Services at least two weeks prior to the event. Calls on late breaking programs, room or time changes, etc. can be made to the News Services at 377-3180 so that this material can be carried correctly in the daily calendar.

AREA EMPLOYERS ATTEND PEP WORKSHOP

Representatives from 15 major employers in southeastern Michigan attended a recent employer workshop to discuss the Periodic Employment Program (PEP) at OU.

The PEP program is run through the Department of Career Advising and Placement in cooperation with area industries. Feedback from employers will be used in shaping the future direction of the program. PEP students alternate semesters of work and study. Students must be of junior level to apply for placement.

The workshop was sponsored by the PEP Advisory Council chaired by John Tower, economics and management. Among those attending were Frederick W. Obear, provost and vice president for academic affairs; Manuel H. Pierson, dean for student services; and Ronald B. Kevern, director of career advising and placement.

OHEP EXECUTIVE DIRECTOR IS ON CAMPUS

Dr. Ernest M. Hammel, executive director of the Oakland Health Education Program (OHEP) has been invited by the university to use office facilities in room 268, South Foundation Hall.

The university feels the use of the facilities by OHEP supports and complements the educational purpose and programs of the institution. OHEP has agreed to pay office renovation costs and rental and support service fees to the university.

OHEP is a nonprofit corporation formed to coordinate educational activities and to share resources. Dr. Moon J. Pak, director of the OU Center for the Health Sciences, is a member of OHEP's Board of Directors. OHEP includes Providence, William Beaumont, St. Joseph Mercy, Pontiac General, and Crittenton hospitals, the Oakland Medical Center, OU, the Wayne State University School of Medicine, and the University of Michigan.

Continued, page 3

HESS IS CHAIRPERSON

Allen K. Hess, psychology, is the new chairperson of the American Association of Correctional Psychologists' Correspondence Task Force on Drug Abuse.

APPLETON GIVES PAPER

Sheldon Appleton, political science, presented a paper, "Public Opinion on Taiwan," to the 30th International Congress on Human Sciences in Asia and North Africa (International Congress of Orientalists) held August 3-8 in Mexico City.

STERN WRITES ARTICLE

The May issue of the Journal of the American Chemical Society contained an article by Robert Stern, chemistry, entitled "A Photoisomer of 1, 3, 6, 8--Tetraphenylcyclooctatetraene as a 1:1 mixture of 1, 2, 4, 7--Tetraphenylcyclooctatetraene and 2, 5, 7, 8--Tetraphenylcyclooctatetraene and 2, 5, 7, 8--Tetraphenyl (4.2.0) Biocyclooctatriene."

ALUMNI ATTEND GOLF OUTING

Some 75 alumni attended their first golfing event July 24 on the Oakland University Katke-Cousins Golf Course. There were 13 prizes awarded for men's and women's competition.

Alumni who want a free return engagement can arrange one by participating in the August 22 Volunteers Day. On that date, alumni can volunteer to help in alumni office programs in return for nine free holes of golf.



HISTORY — Oakland University is a state-supported co-educational institution with an enrollment of approximately 10,500 full- and part-time students.

The institution was founded in 1957 when the late Mr. and Mrs. Alfred G. Wilson donated their 1,400-acre Meadow Brook Farms Estate and \$2,000,000 to Michigan State University to create a new university in Oakland County.

That institution, Oakland University, opened in 1959 and was governed by MSU until 1970 when it received its independence, its own president, and board of trustees.

Since 1957, OU has added another 104 acres to the Wilsons' original gift, and the current value of the physical plant is \$60,300,000.

CAMPUS — Today Oakland University offers the best of both worlds—it has a rural setting with much of the land untouched by construction, and it is located near a major metropolitan area that offers diverse housing, shopping, sporting, and cultural opportunities.

The university is located approximately 25 miles north and west of Detroit and almost equal distances between Pontiac on the west and Rochester on the east.

ENROLLMENT — OU's enrollment is drawn from more than 20 states and 20 foreign countries, but the majority of each new class comes from the tri-county area of Oakland, Wayne, and Macomb. While most OU students commute, there are seven campus residence halls to accommodate up to 1,600 students. A variety of housing options are available including a cooperative residence in which students perform their own chores in return for a reduced housing fee.

ROOM AND BOARD — Residence hall rates for the fall and winter semesters (based on double occupancy) are \$1,498 a year room and board and \$938 a year for room only. Residents of the student cooperative pay \$754 for the year.

TUITION — Resident undergraduates pay \$24.25 per credit hour and graduate students pay \$33.50 per credit hour. The nonresident fee for undergraduates and graduates is \$63.50 per credit hour.

ACADEMIC UNITS AND COURSES OF STUDY — Major academic units include a College of Arts and Sciences, School of Economics and Management, School of Education, School of Engineering, School of Nursing, School of Performing Arts, and a Center for General and Career Studies. There are more than 70 undergraduate courses of study, 20 master's degree programs, and a Ph.D. program in systems engineering.

FACULTY — The university faculty now numbers nearly 400, and 77 percent of the faculty hold doctorates in specialized fields. Many of the instructional staff have been singled out for various awards from such institutions as the American Council for Learned Societies, the National Science Foundation, and the Fulbright-Hays Fellowship.

CULTURAL ACTIVITIES — Enrichment of community cultural life through programs of the highest caliber is an OU goal. Each fall and winter, the Meadow Brook Theatre presents the best in professional theatre with a resident equity company. Every summer, the Meadow Brook Music Festival serves as home for the Detroit Symphony Orchestra, and it offers renowned classical and popular artists performing in Baldwin Memorial Pavilion. Additional thousands come to campus each year for the productions of the Academy of Dramatic Art, Student Enterprise Theatre, and the Department of Music or to visit the Meadow Brook Art Gallery and other special art exhibitions. Meadow Brook Hall, the Wilsons' Tudor-style mansion, has been adapted as a conference and cultural center. More than 241,000 persons have toured the hall or attended conferences there to date.

PUBLIC SERVICE — Oakland University faculty and guests offer numerous lecture programs throughout the year. Most of these services are available to the community at no charge. The OU Urban Affairs Center links the university and the community to provide services for industries, schools, ethnic groups, and the aged, among others. The center operates a successful alternative high school education program in the Detroit area. Through the Urban Affairs Center and the Oakland County-Oakland University Student Intern Program, students may serve as interns on a paid, part-time basis in various county offices. Students also may enroll in community service classes for credit through the center. The Division of Continuing Education and the credit evening program provide for the area's education needs with programs both on and off campus.

ATHLETICS — Oakland University offers a strong program of intercollegiate athletics. Men's and women's teams compete for league championships in the Great Lakes Intercollegiate Athletic Conference (GLIAC). Other members of the conference are Ferris State College, Grand Valley State Colleges, Hillsdale College, Lake Superior State College, Northern Michigan University, Northwood Institute, Saginaw Valley State College, and Wayne State University. OU men compete in cross country, soccer, basketball, swimming, baseball, golf, tennis, wrestling, and track. Women compete in basketball, swimming, golf, tennis, and volleyball. The men's swimming team finished third in the NCAA Division II Championships in March, 1976.

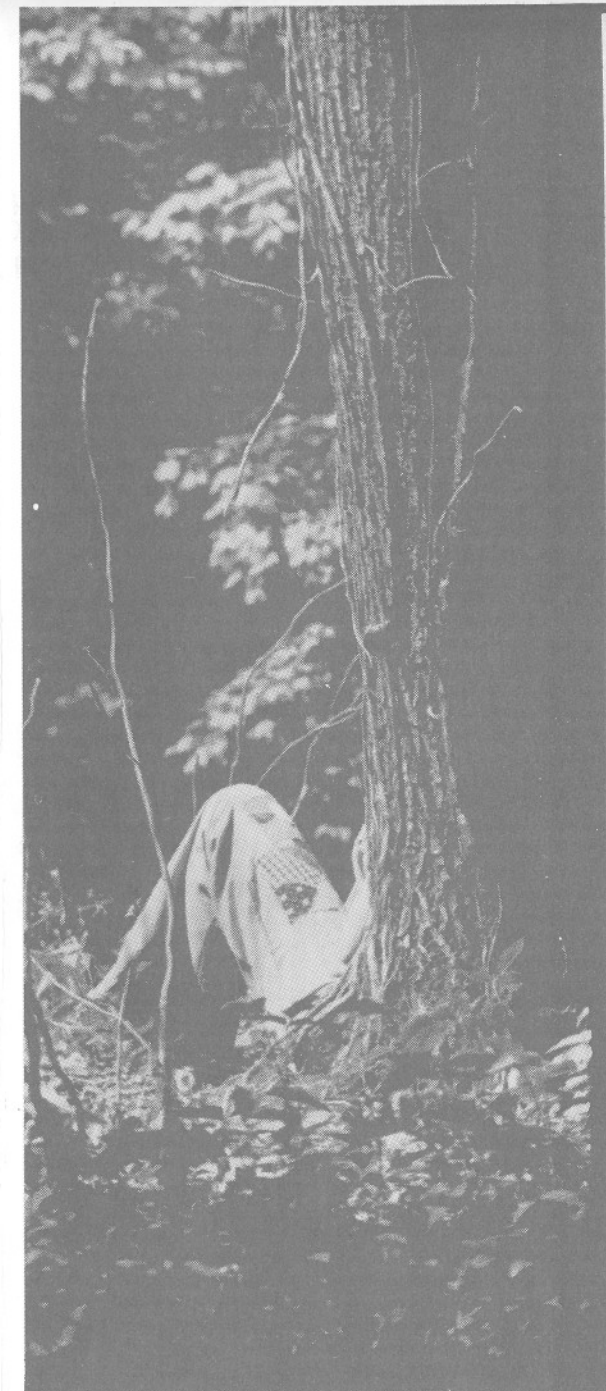
CONTINUING EDUCATION — The Division of Continuing Education offers noncredit courses and diploma programs, labor education programs, conferences and institutes, and career counseling programs for adult men and women.

ADMINISTRATION — Oakland University's president is Donald D. O'Dowd. The 49-year-old O'Dowd has a national reputation as an administrator and researcher. The university is governed by an eight-member board of trustees appointed by the governor.

SPECIAL TELEPHONE NUMBERS (Area code 313)

General university number.....	377-2100
Office of Admissions.....	377-3360
Graduate Office.....	377-3166
Division of Continuing Education.....	377-3120
Meadow Brook Hall.....	377-3140
Meadow Brook Festival.....	377-3100
Meadow Brook Theatre.....	377-3310

Written inquiries can be directed to any of the above offices or programs at Oakland University, Rochester, Michigan 48063.



76-77 campus map

Oakland University
Rochester, Michigan

AMERICAN PUBLISHERS, INC. 1976



373-1711

One Mile from
University
1650 N. Perry
At Pontiac Road

Green Parrot

DELICIOUS FOOD & LIQUOR

• Meetings • Showers
• Parties • Receptions
PRIVATE BANQUET ROOM

sportabout
sport shop

all your sporting needs
camping • backpacking • tennis
fishing • racketball

Miracle Mile 338-0341
2211 S. Telegraph OPEN 7 DAYS

NOTE: Please patronize the businesses participating in this publication. It is their support that provides this valuable service for students, faculty members, visitors and residents.

SCARLETT'S **Schwinn** CYCLERY

203 NORTH PERRY STREET • PONTIAC

PHONE 333-7843

**MICHIGAN'S LARGEST
SCHWINN DEALER**

SERVING PONTIAC SINCE 1928

Free Assembly
On All Models

Trade-ins
Accepted

Free 6 Month
Service Policy

Repairs On
All Brands

Cooper's Arms

FINE DINING and SPIRITS

Downtown Rochester

Uncle Bela's

*FOR COCKTAILS
and ENTERTAINMENT*

651-2266

**NO-STRINGS-ATTACHED
ABSOLUTELY FREE
CHECKING.**



CITY NATIONAL BANK

ANDRÉS
beauty clinic **SALON**

meadowbrook village mall

north adams road at walton boulevard

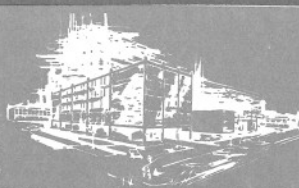
dr. barry a. bell 375-0022
dr. donald b. schore
preventive and corrective
OPTOMETRY
• eye examinations • contact lenses

Welcome To The



BIRMINGHAM

145 So. Hunter Blvd. (Woodward)
US-10 at Maple Rd. (15 Mi. Rd.)
Phone: (313) 646-7300 or
566-4620



Shalea Inn

FRESH SEAFOOD
COCKTAILS - WINE
852-3410

3315 AUBURN ROAD
AUBURN HEIGHTS, MICH.

**WE'LL GIVE YOU
FULL CREDIT**

in the Community College
of the Air Force

It's an entirely new concept! College credit, transferable, for your training and experience during your enlistment. If you want to become a professional in one of 3,700 vocational areas, ask to see our new general catalog. Air Force men and women can make it in so many different ways. We'd like you to be one of us.

Look up. Be looked up to. Air Force.
AIR FORCE - A GREAT WAY OF LIFE

SEE: Sgt. Dutch Dutcher
35 E. Huron St.
Pontiac, 332-9116



VITA MILL HEALTH FOODS

OPEN 7 DAYS A WEEK

10% DISCOUNT VOUCHER
ON ANY PURCHASE WITH
UNIVERSITY I.D.

651-1600
876 S. ROCHESTER RD.



UNIVERSITY STANDARD SERV.

373-9454

ATLAS TIRES, BATTERIES, ACCESSORIES

COMPLETE CAR CARE

2815 University Dr., Pontiac, Mich.



Sinbad's HAIR STUDIO

UNISEX HAIR DESIGN

MON-SAT 10-6
120 E. THIRD ST.
ROCHESTER, MICH.
652-1942



Children's World

• Educational Day Care
• Pre-School
• Kindergarten

"The Early Learning Center"

Open Year Round 12 Locations

852-1223 6:45 A.M. to 6:00 P.M.
254 Hampton Circle



**WAGON WHEEL
SALOON**

ENTERTAINMENT
SEVEN NIGHTS
SUPER SANDWICHES

Rochester Road at
Big Beaver Road, Troy 689-3142

**WLDN
FM**

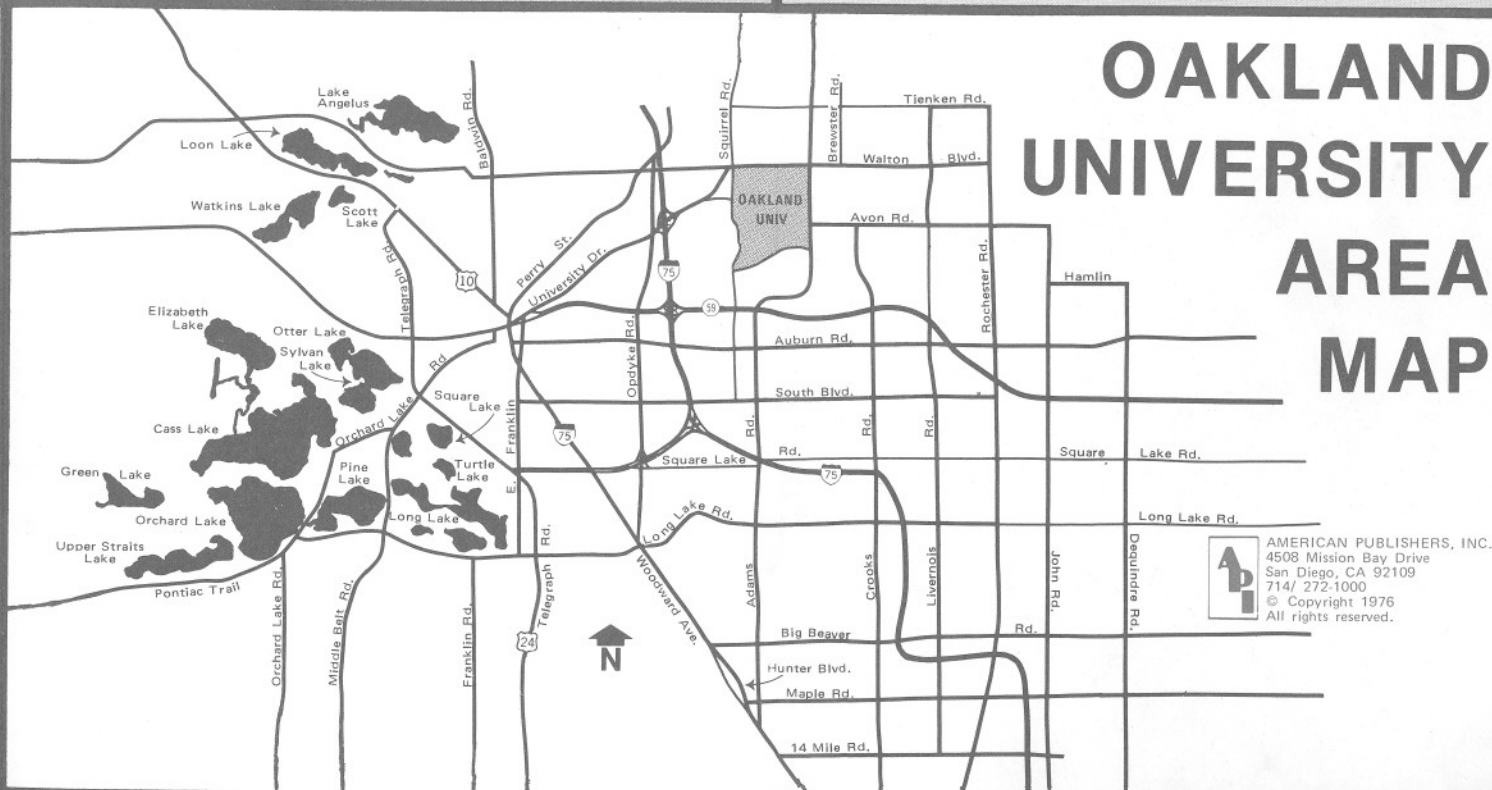
95.5mc

Beautiful Music
for
28 Years

373-0160
1940 N. Opdyke Road
1 Mile North of
Pontiac Stadium
Scottsberg
INC.
Specializing in
VOLKSWAGEN REPAIRS
COURTESY SHUTTLE
SERVICE TO O.U.



BOOKS N' THINGS
321 W. UNIVERSITY DRIVE
ROCHESTER • 651-7880



**OAKLAND
UNIVERSITY
AREA
MAP**



AMERICAN PUBLISHERS, INC.
4508 Mission Bay Drive
San Diego, CA 92109
714/ 272-1000
© Copyright 1976
All rights reserved.

COME STAY WITH US . . .

for a time

SPARTAN MOTEL
1100 N. Main
Rochester
651-8100

or a lifetime

ROCHESTER PARK APTS.
in Rochester
Students Welcome
651-9751

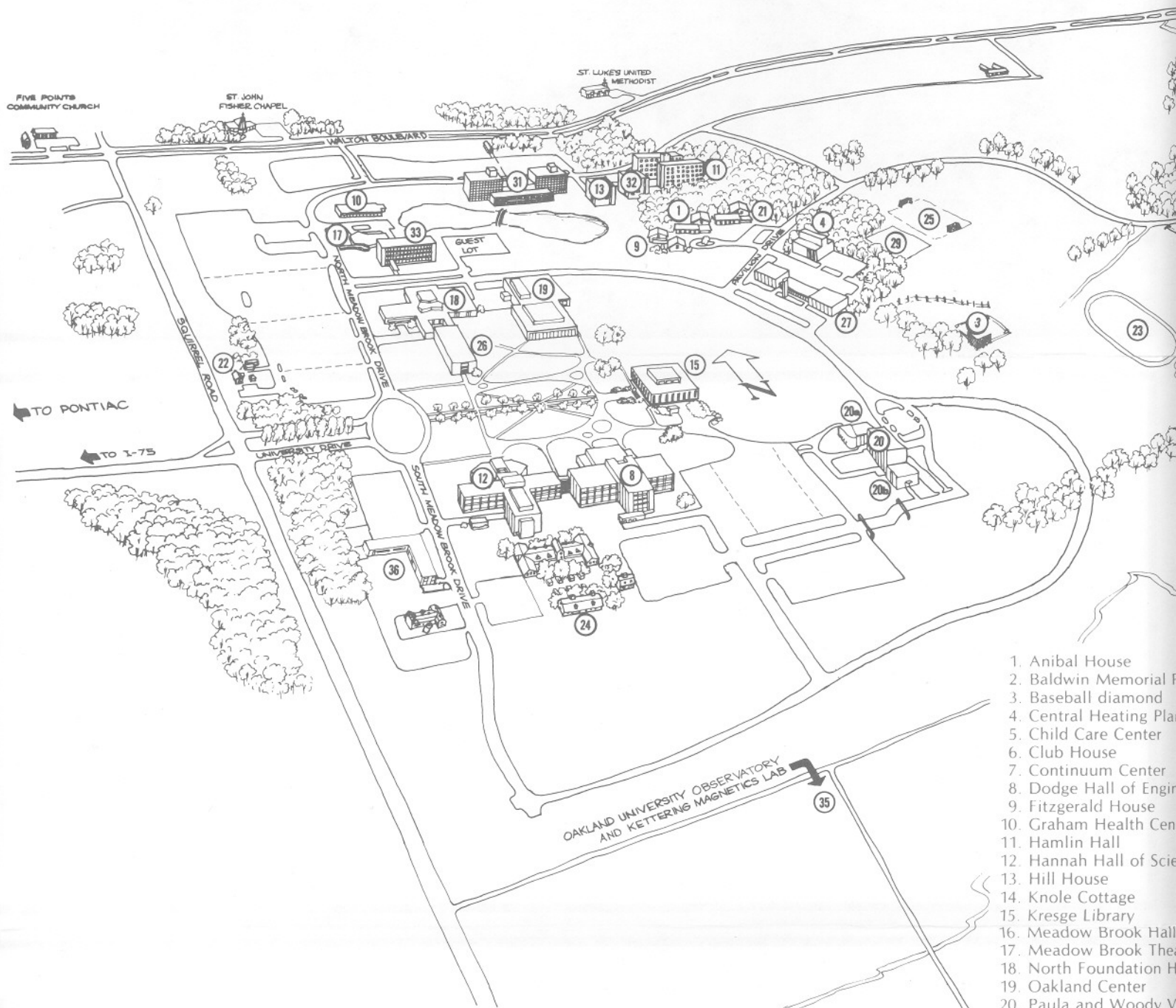
SUBURBAN TRAVEL SERVICE INC.

919 W. UNIVERSITY DRIVE
ROCHESTER, MICH. 48063 PHONE 651-7762

TRAVEL COUNSELORS TO OAKLAND UNIVERSITY
STAFF AND STUDENTS. GROUP OR INDIVIDUAL

★ THRIFTY AUTO PARTS ★
★ - SERVING - ★
★ ROCHESTER-TROY-AVON ★
★ 9 OTHER LOCATIONS ★
★ 852-5100 ★
★ 2648 S. ROCHESTER RD. ★

*Sea
Creatures*
Marine Fish
&
Invertebrates
(313) 651-8088



1. Anibal House
2. Baldwin Memorial Hall
3. Baseball diamond
4. Central Heating Plant
5. Child Care Center
6. Club House
7. Continuum Center
8. Dodge Hall of Engineering
9. Fitzgerald House
10. Graham Health Center
11. Hamlin Hall
12. Hannah Hall of Science
13. Hill House
14. Knoke Cottage
15. Kresge Library
16. Meadow Brook Hall
17. Meadow Brook Theatre
18. North Foundation Hall
19. Oakland Center
20. Paula and Woody V.

This Official Oakland University Campus Map is published by AMERICAN PUBLISHERS, INC., 4508



OAKLAND UNIVERSITY



"LET US PUT
Television
Sales

TOM JONE'S TV S

CANON • OLYMPUS • NIKON • LEICA • KODAK • VIVITAR • BRAUN

BIRMINGHAM CAMERA

419 MAIN • ROCHESTER 652-4250
(EVERYTHING PHOTOGRAPHIC / FRAMING / PROCESSING)



FOX HILLS BIG BOY, INC.

1615 OPDYKE ROAD • BLOOMFIELD HILLS, MICH. 48013
858-2315 • Sun-Thur 7 a.m.-12 Midnight • Fri-Sat 7 a.m.-2 a.m.

ROCHESTER BIG BOY, INC.

727 NORTH MAIN STREET • ROCHESTER, MICH. 48063
651-8575 • Sun-Thur 7 a.m.-12 Midnight • Fri-Sat 7 a.m.-1:30 a.m.



Mission Bay Drive, San Diego, CA 92109. Phone (714) 272-1000. Copyright ©1976. All rights reserved.

LAND UNIVERSITY

"YOU ON THE AIR"

and CB Radios
and Service



SERVICE

1685 So. Woodward
Birmingham MI 37-2052



OHEP is working on a wide variety of educational programs in the areas of undergraduate, graduate, and continuing education.

OU APPROPRIATION EXPLAINED

Only \$583,630 in additional state appropriations will be available to Oakland University for the 1976-77 fiscal year beginning July 1, 1976, not \$992,405 as stated in earlier reports.

The difference arises from the fact that OU's fiscal year, the one on which contracts are normally based, continues to run from July 1 through June 30 while the State of Michigan has changed its fiscal year for general fund appropriations from an October 1 through September 30 time period.

Thus, only nine months of the new state appropriation of \$14,235,500 will be received during OU's fiscal year, university officials said.

For fiscal 1975-76 (July 1-June 30), OU received \$13,243,095. For the same period in 1976-77, the university will receive \$13,826,725, an increase of only \$583,630.

OU's 1976-77 funds will come in the following manner:

July 1, 1976 - September 30, 1976	\$ 3,150,000
(Less than the 1975-76 appropriation level)	
October 1, 1976 - June 30, 1976	10,676,625
(75% of \$14,235,500)	
Total Due in Fiscal 1976-77	<u>\$13,826,625</u>

The remaining quarter of \$3,558,875 will be paid for the period of July 1 through September 30. This period is three months into OU's 1977-78 fiscal year, and the funds cannot be counted in the current fiscal year's appropriations, OU officials said.

A.F.S.M.E. EXTENDS CONTRACT

Local 14 of the American Federation of State, County, and Municipal Employees has voted to extend its contract with the university to October 31. AFSME is the third OU bargaining unit to approve a contract extension.

Announced previously were an August 16 extension approved by the United Auto Workers/Clerical Technical Local 1925 and an October 31 date approved by the Police Officers Association. The three-year AFSCME agreement expired July 31. The other two contracts expired June 30.

Negotiations continue on new contracts for these bargaining units and for the University Chapter of the American Association of University Professors. The AAUP is working without a contract. The one-year agreement ended June 30.

ID CARDS NEEDED

Faculty and staff members who wish to play the Oakland University Katke-Cousins Golf Course are reminded that they must present their OU identification cards at the Pro Shop prior to playing the course. These identification cards can be obtained at the Sports and Recreation Building between 8 a.m. and noon and between 1 and 5 p.m. on Monday through Friday.

DR. PAK GETS POST

The board of directors of the Hypertensive Coordinating Planning Council of Southeast Michigan has elected Dr. Moon J. Pak as president for 1976-77. Dr. Pak is director of OU's Center for the Health Sciences.

The organization is dedicated to the establishment of a network of hypertension control centers in this area and to coordinate the screening and referral activities for hypertensive patients.

CAREER DAY SET

Several hundred persons are expected at an August 14 adult Career Information Day sponsored by the Center for General and Career Studies. The program will be held from 8:30 a.m. to 4 p.m. in the Oakland Center. Topics include how to choose a major, the relevance of various majors and their career potential, and the opportunities for credit evening study.

CALENDAR

AUGUST 10-24, 1976

MEADOW BROOK MUSIC FESTIVAL - BALDWIN PAVILION -

- AUGUST 12 PENNSYLVANIA BALLET, 8:30PM
- 13 PENNSYLVANIA BALLET, 8:30PM
- 14 PENNSYLVANIA BALLET, 8:30PM
- 15 AN EVENING OF ROGERS AND HAMMERSTEIN - GORDON MACRAE,
BARBARA MEISTER, AND DAVID BENDER, GORDON MUNFORD
CONDUCTING, 7:30PM
- 19 SACRED AND PROFANE - DETROIT SYMPHONY ORCHESTRA, OTTO
WERNER-MUELLER CONDUCTING, 8:30PM
- 20 TEX BENEKE BAND - HELEN O'CONNELL AND BOB EBERLY, 8:30PM
- 21 SACRED AND PROFANE - DETROIT SYMPHONY ORCHESTRA, OTTO
WERNER MUELLER CONDUCTING, 8:30PM
- 22 MEADOW BROOK COUNTRY WESTERN NIGHT - JOHNNY RODRIGUEZ
AND BARBI BENTON, 7:30PM

MEADOW BROOK HALL

THERE ARE TOURS OF MEADOW BROOK HALL EVERY SUNDAY FROM 1-5PM. DURING THE MONTH OF AUGUST, THERE WILL BE TOURS MONDAY THROUGH SATURDAY FROM 10AM-5PM.

STUDENT ACTIVITIES

- AUGUST 11 NOONTIME CONCERT - FIRESIDE LOUNGE, OAKLAND CENTER, 12NOON-
2PM

CONFERENCES, WORKSHOPS, DISCUSSIONS

- AUGUST 12 ALTERNATIVE CAREER OPTIONS FOR TEACHERS - OAKLAND CENTER,
9:30AM-4PM

OU, an official publication of Oakland University, Rochester, Michigan, is published weekly during the school year and distributed free within the university community. Its content is under the editorial control of the Office of Public Relations.