

A CULTURAL PROGRAM OF OAKLAND UNIVERSITY

Archives  
ML  
38  
.O2  
M47  
1986  
c.3



**MEADOW  
BROOK**  
MUSIC FESTIVAL

**1986**

MUSIC'S SUMMERPLACE



# 1986 Meadow Brook Music Festival

<i>Monday</i>		<i>Tuesday</i>	<i>Wednesday</i>	<i>Thursday</i>
All concerts begin at 8 p.m. unless otherwise noted.		All programs and artists subject to change.		
Meadow Brook Music Festival is a cultural program of Oakland University.			<b>June 18</b> Mitzi Gaynor	<b>June 19</b> DSO Gunther Herbig, conductor Itzhak Perlman, violinist
<b>June 23</b> Tangerine Dream			<b>June 25</b> B. B. King with special guest James Cotton	<b>June 26</b> DSO Gunther Herbig, conductor Marc-Andre Hamelin, pianist
	<b>July 1</b> Spyro Gyra		<b>July 2</b> "Summer Solid Gold I": Motor City Magic Mary Wilson, Junior Walker & The All Stars, The Marvellettes, Mary Wells, The Contours Fireworks	<b>July 3</b> DSO David Zinman, conductor David Golub, pianist Fireworks
			<b>July 9</b> Folk Fest '86 Joan Baez, Don McLean, Livingston Taylor	<b>July 10</b> DSO Julius Rudel, conductor Elly Ameling, soprano
<b>July 14</b> Roger Whittaker	<b>July 15</b> Roger Whittaker		<b>July 16</b> Oregon	<b>July 17</b> DSO Jiri Belohlavek, conductor Ernst Kovacic, violinist
<b>July 21</b> Pia Zadora	<b>July 22</b> "Summer Solid Gold II": Johnny Rivers, Del Shannon, Lou Christie, Freddie Cannon		<b>July 23</b> Emmylou Harris	<b>July 24</b> DSO Theo Alcantara, conductor Christopher Parkening, guitarist Kathleen Segar, mezzo-soprano
	<b>July 29</b> Preservation Hall Jazz Band 1986 John S. Judd Memorial Concert		<b>July 30</b> Jean-Luc Ponty	<b>July 31</b> DSO Paavo Berglund, conductor Viktoria Mullova, violinist
				<b>August 7</b> DSO Daniel Nazareth, conductor Gordon Staples, violinist
	<b>August 12</b> "Summer Solid Gold III": Frankie Valli & the Four Seasons with special guest Three Dog Night		<b>August 13</b> New York Philharmonic Leonard Bernstein, conductor Glenn Dicterow, violinist	
			<b>August 20</b> Festival Women's Fashion Show	<b>August 21</b> David Sanborn
<b>August 25</b> Petra				<b>August 28</b> Israel Philharmonic Zubin Mehta, conductor



# Complete Performance Calendar

<i>Friday</i>	<i>Saturday</i>	<i>Sunday</i>
<b>June 6</b> Michael Franks George Howard	<b>June 14</b> Earl Klugh & Friends	<b>June 1</b> WDET's Motor City Bluegrass Festival
<b>June 20</b> Liberace	<b>June 21</b> Liberace	<b>June 22</b> DSO Gunther Herbig, conductor Malcolm Frager, pianist
<b>June 27</b> Debbie Reynolds Donald O'Connor	<b>June 28</b> 11 a.m. Children's Concert: Oakland Youth Symphony Engelbert	<b>June 29</b> DSO Gunther Herbig, conductor Sergei Edelman, pianist
<b>July 4</b> The Lettermen Tom Paxton <i>Fireworks</i>	<b>July 5</b> The Nylons The Larados <i>Fireworks</i>	<b>July 6</b> DSO David Zinman, conductor David Golub, pianist <i>Fireworks</i>
<b>July 11</b> Ferrante & Teicher	<b>July 12</b> Jean-Pierre Rampal Detroit Symphony Pops Varujan Kojian, conductor 1986 V. Everett Kinsey Memorial Concert	<b>July 13</b> DSO Julius Rudel, conductor Elly Ameling, soprano
<b>July 18</b> Johnny Mathis	<b>July 19</b> Johnny Mathis	<b>July 20</b> DSO Jiri Belohlavek, conductor Rudolph Firkusny, pianist
<b>July 25</b> Detroit Symphony Pops Skitch Henderson Margaret Whiting Robert Carroll 1986 Louis C. Goad Memorial Concert	<b>July 26</b> "The True Story of the Three Little Pigs" "Salute to the Big Bands" Tex Beneke, Helen Forrest, Paula Kelly, Jr., The Modernaires	<b>July 27</b> DSO Theo Alcantara, conductor Natalie Hinderas, pianist Kathleen Segar, mezzo-soprano
<b>August 1</b> Peter, Paul & Mary	<b>August 2</b> Tony Bennett Rosemary Clooney	<b>August 3</b> DSO Paavo Berglund, conductor Viktoria Mullova, violinist
<b>August 8</b> "The Golden Boys of Bandstand"; Frankie Avalon Fabian Bobby Rydell	<b>August 9</b> DSO Pops Charles Greenwell, conductor Louise Russell, soprano John Walker, tenor	<b>August 10</b> DSO Daniel Nazareth, conductor Jose Feghali, pianist
<b>August 15</b> Laser Light Spectacular "Music from the Great Motion Pictures"	<b>August 16</b> Laser Light Spectacular "Music from the Great Motion Pictures"	<b>August 17</b> "Summer Solid Gold IV": Fats Domino Jerry Lee Lewis
<b>August 22</b> Manhattan Transfer	<b>August 23</b> 11 a.m. Children's Concert: Jack Wagner	
<b>August 29</b> Lou Rawls Maynard Ferguson		<b>August 31</b> Kenny Loggins



# Meadow Brook Music Festival

## Staff

The Meadow Brook Music Festival operates under the supervision of the Director of Cultural Affairs of Oakland University,  
**Robert A. Dearth**

*Managing Director*

Stuart C. Hyke

*Administrative Secretary*

Cathy A. Linden

*Finance Director*

John Fischer

*Accountant & Financial Analyst*

Carol Lamb

*Finance Assistant*

Sandy Teague

*Director of Community Relations and Group Sales*

Jane U. Mosher

*Administrative Assistant*

Jacqueline R. Sferlazzi

*Group Sales Assistant*

Joan Dietch

*Secretarial Assistant*

Lesa Welker

*Public Relations Director*

Sylvia Coughlin

*Public Relations Assistant*

Julie Glynn

*Production Director*

James Spittle

*Assistant for Administration &*

*Associate Production Director*

Gregg Bloomfield

*Artists Relations Director*

Mary Lynn Crum

*Stage Manager*

Rick Gopigian

*Lighting Engineer*

Robert Mesinar

*Audio Engineer*

Tom Bryant

*Operations Director*

Gary Gandolfi

*Parking Supervisor*

Steve Cook

*Maintenance Supervisor*

Steve McDonald

*Ushering Coordinator*

Matt Rose

*Transportation Coordinator*

Bill Bratton

*Box Office Manager*

Suzanne Day

*Single Ticket Supervisor*

Shirley Geary

*Season Ticket Supervisor*

Lois Day

*Supervisor of Box Office Operations*

Kathleen Gentile

*Box Office Staff*

Angela Arndt, Elaine Bellanger,

Leslie Bonnell, Barbara Jenks

*Secretary to Mr. Dearth*

Patricia Pote

## Program

## Contents

Board of Trustees and Officers of Oakland University .....	6
Complete Season's Performance Calendar .....	10-11
Coming Events .....	13-14
Oakland University	
Welcome to the Festival .....	17
"A University of the '80s" .....	18-23
Meadow Brook Theatre	
"Meadow Brook Stars are World Class" .....	28-29
Executive Committee Chairpersons, 1986 .....	35
Past Executive Committee Chairpersons, 1964-85 .....	36-38
Women's Committee Highlights .....	43-44
Special Acknowledgements .....	46
Executive and Finance Committees of Meadow Brook	
Music Festival and Meadow Brook Theatre .....	59
Rochester Festival Club .....	61-62
The Detroit Symphony Orchestra .....	72-73
Program Notes and Artists' Biographies .....	75-121
The New York Philharmonic .....	125-127
The Israel Philharmonic .....	131-133
Contributors to Meadow Brook Music Festival and	
Meadow Brook Theatre	
Major Donors .....	143-144
Sponsors .....	146-148
Century Club .....	146-148
Contributors .....	151-154
Friends of Meadow Brook Music Festival .....	156-157
Index to Advertisers .....	167



Stage work at the Baldwin Pavilion is done by members of the International Alliance of Theatrical Stage Employees, Local No. 38.



---

# OAKLAND UNIVERSITY

---

Archives

ML

38

.02

m47

1986

C.2

## BOARD OF TRUSTEES

Wallace D. Riley  
*Chairperson*

David Handleman  
*Vice Chairperson*

Donald L. Bemis

Phyllis Law Googasian

Patricia B. Hartmann

Alex C. Mair

Ken Morris

Howard F. Sims

Joseph E. Champagne  
*Ex Officio*

## OFFICERS OF THE UNIVERSITY

Joseph E. Champagne  
*President*

Keith R. Kleckner  
*Senior Vice President  
for University Affairs  
and Provost*

John H. DeCarlo  
*Vice President for  
Governmental Affairs  
General Counsel, and Secretary  
to the Board of Trustees*

Robert J. McGarry  
*Vice President for Finance and  
Administration and Treasurer  
to the Board of Trustees*

Wilma H. Ray-Bledsoe  
*Vice President for Student  
and Urban Affairs*

David H. Rodwell  
*Vice President for External Affairs  
and Director of Development*

Robert W. Swanson  
*Vice President for Developmental Affairs*



# SPECIAL EVENTS

*Not to be Missed*

## Picnic on the Grass

July 12, 1986

### **Picnic Goes East!!**

The 14th Annual Picnic on the Grass for the benefit of Meadow Brook Art Gallery will be the exhibition and sale of Kimonos — Happy Coats created by Michigan artists. It will be held on Saturday, July 12, 1986 with dinner at Meadow Brook Hall gardens followed by the Jean-Pierre Rampal/Detroit Symphony Pops concert. Call 370-3005 for more information.

## Afternoon at Ascot

August 20, 1986

On Wednesday, August 20, the Meadow Brook Music Festival Women's Committee and Jacobson's will present an exciting afternoon of fashions in the newly renovated Shotwell-Gustafson Pavilion on the east campus of Oakland University. The theme of the Ascot Races will prevail with music from "My Fair Lady" opening the show. All tickets include luncheon. Patron tickets are \$25. Benefactors at \$50 are invited to a sherry reception at 11:15; luncheon is at 12:15 p.m. For further information please call 370-3316.

## Luncheon on the Aisle

October 2, 1986

The Meadow Brook Theatre Guild will sponsor the 10th Annual "Luncheon on the Aisle" to benefit the Meadow Brook Theatre on Thursday, October 2 at 12:00 noon in the Meadow Brook Theatre, Wilson Hall. The doors will open at 11:30 a.m.; a box luncheon will be provided in the Theatre followed by rehearsal scenes from "Richard III." Door prizes and a costume demonstration will also be a part of the day's events. Tickets are \$15.00. For further information please call (313) 370-3316.



---

# Welcome

---



Emilie and I would like to welcome you to this 23rd season of the Meadow Brook Music Festival. We hope you will enjoy a year of special pleasures. Each concert season builds on the tradition that is Meadow Brook and 1986 is no exception. In this treasured setting with its unrivaled acoustics, we will hear two of the world's great orchestras in guest performances as well as the Detroit Symphony Orchestra. The classical repertoire will have variety to please every taste and the popular concert series will again vary from ballads to jazz.

Oakland University and its many volunteer workers are proud to continue to bring you the Meadow Brooks, both the festival and theatre. While the university takes its place among the leaders in the technology transfer explosion in our state, we will never lose sight of the traditional values, the commitment to the arts that has brought so much pleasure to thousands of people throughout Southeastern Michigan. Emilie and I ask you to join us as often as you can. Come to the beautiful setting of Meadow Brook. The 1986 theme is "Music's Summer Place." Make it your place to be.

Sincerely,

President  
Oakland University



# A UNIVERSITY OF THE '80s...



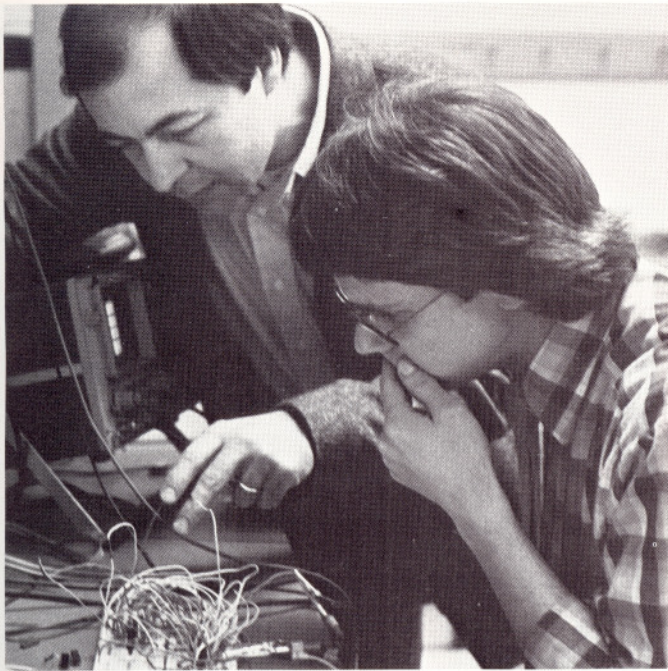
Oakland University continues to play its part in the technological revolution while recognizing that the arts, sciences and humanities remain the core of an education, particularly at the undergraduate level.

**T**he university has put more than rhetoric into that belief. The results are new requirements and resources to back Oakland's commitment.

President Joseph E. Champagne, a strong supporter of the recently strengthened general education requirements, told an Economics Club of Detroit luncheon audience of the Oakland philosophy, saying, "We at Oakland have focused our efforts of maintaining a strong liberal arts base to produce leaders, but at the same time have recently emphasized heavily science and technology in a direct and expansive way."

The result is a blending of technology and the humanities that sees, on one hand, a strong partnership in ventures such as the high technology park adjacent to the campus; scientific achievements that have earned the university a major share in the state research excellence





*Oakland professors work closely with students to enhance their intellectual and personal growth.*

and economic development fund; new cooperative efforts with industry and labor; and, on the other hand, a renewed emphasis on the arts and humanities as a fundamental base of the undergraduate experience.

The significance of that humanities commitment is traced by Brian P. Copenhagen, dean of the College of Arts and Sciences.

"When Oakland University celebrated its 25th anniversary in 1984, it chose the theme 'Humane Values in a Technological Civilization' to express its educational philosophy and traditions. Among Oakland's many programs of instruction, scholarship and service, the primary vehicles of the humane values prized by the whole university are the eight humanities and arts departments of the College of Arts and Sciences: the departments of Art and Art History; English; History; Linguistics; Modern Languages and Literatures; Music, Theatre and Dance; Philosophy; and Rhetoric, Communications and Journalism," Copenhagen explained.

"In each of these departments, Oakland offers major programs of study that introduce undergraduates to the rich resources of humanities and arts disciplines. Our curricula in these disciplines help students become capable of critical thinking; of joining a zeal for informed judgment with a tolerance for ambiguity; of cultivating moral and aesthetic sensibilities; of mastering crucial skills of reading, writing and speaking; of appreciating cultural difference and chronological perspective; of confronting the pragmatic features of the modern world; and of acquiring levels of information about the human condition sufficient for responsible citizenship and the enjoyment of civilized society.

"Oakland believes that all undergraduates should benefit from education in the humanities and the arts, not only as foundations for their programs of study but also as prepara-

tions for their lives. Throughout its history, Oakland's commitment to the humanities and the arts has been strong and recent decisions have reaffirmed the university's desire to strengthen the liberal arts as the bedrock of undergraduate instruction. Most important, beginning in fall 1985, the university began a new general education program that enlarged the curricular role of the humanities and arts for all undergraduate students."

According to Copenhagen, "Oakland's academic strengths in the humanities and arts lie in three areas: first, in the excellence of its faculty as teachers and scholars in these disciplines; second, in the university's commitment to education in the humanities and arts for all its undergraduates, as described above; and third, in the university's ability to extend the resources of the humanities and arts to a wide range of curricular and extracurricular needs, some of them distant from any traditional understanding of the words 'humanities' and 'arts.'"

"Faculty who teach the humanities and arts at Oakland are remarkably serious about their work in the classroom. Historically, this seriousness is a product of the zeal, the almost utopian dedication implicit in the title of David Riesman's book about the early Oakland: *Academic Values and Mass Education*. Now, in the Oakland of 1986, our humanists and artists are as devoted to their students as they are dedicated to the life of the mind and spirit. Judgments of their peers in the worlds of higher learning and artistic creativity testify to the extraordinary results of this dedication.

"Between 1982 and 1985, the humanities and arts faculty at Oakland wrote or edited 30 books; produced more

*Hands-on experience is an integral part of all educational programs at Oakland University.*



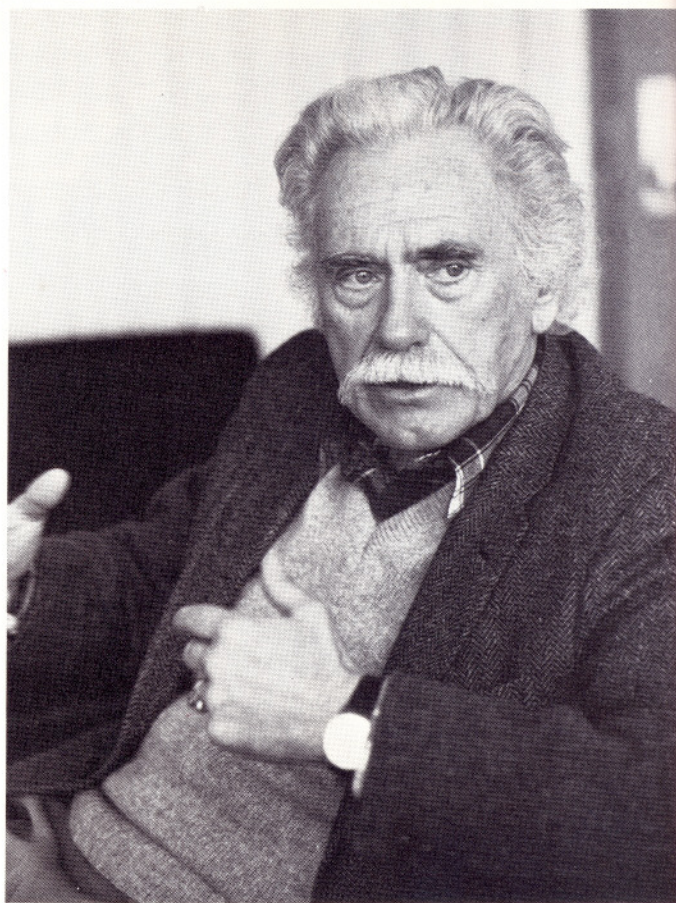


than 300 articles, reviews and compositions; read more than 200 papers at scholarly and public meetings; and participated in nearly 500 artistic performances. The following are only a few examples of recent work by Oakland humanists published by the most distinguished presses in this country and abroad: Charles Akers' award-winning biography of Samuel Cooper (Northwestern University Press, 1982); John Barnard's life of Walter Reuther (Little Brown, 1983); Peter Binkert's new theory of residential grammar (Mouton, 1984); Jane Eberwein's study of Emily Dickinson (University of Massachusetts, 1985); Robert Eberwein on film and dreams (Princeton, 1984); poems by Thomas Fitzsimmons with Ooka Makoto (Chikuma Shobo, 1982); Joseph Klait's on the great European witch hunts (Indiana University, 1985); Norman Susskind's *French Correction* (Yale, 1984) and S. Bernard Thomas on labor and the Chinese Revolution (University of Michigan, 1983). Professor Helen Schwartz of Oakland's English department published the first textbook on college writing that integrates composition with word processing by microcomputers, *Interactive Writing: Composing with a Word Processor* (Holt, Rinehart and Winston, 1985).

"This is a remarkable record of professional achievement for a humanities and arts faculty that numbers fewer than a hundred persons. It is equally remarkable that these same faculty have applied their talents and energies to various interdisciplinary and cooperative activities that make the humanities and arts indispensable not only to their traditional audiences, but also to other groups and communities inside and outside the university," Copenhagen continued.

"Extension of the humanities and arts across disciplines and beyond the borders of the campus has been a lively part of Oakland's traditions. Our long-standing commitment to international studies has given Oakland humanists the habit of looking beyond the home department and beyond the campus in the use of their instructional and scholarly skills. More recently, the programs of our interdisciplinary Center for the Arts have assisted arts faculty and arts students in performances and exhibitions that require a variety of artistic resources. Our Honors College, founded in 1975, now serves 130 of Oakland's most academically talented students, not only arts and sciences majors but also students from our professional schools.

*Competency in mathematics and computer science is required of all Oakland students as part of the university's recently strengthened general education requirements.*



*Thomas Fitzsimmons, professor of English, who collaborated with Ooka Makoto on a book of Japanese poetry, is a member of Oakland's productive humanities faculty.*

Humanities and arts faculty who teach in the Honors College bring unusual learning opportunities to students qualified for the college's rigorous offerings. Last year, for example, Professor Nigel Hampton of our English department offered a course titled 'Paradise: Lost, Found and Stolen.' Taking their lead from Milton's 'Paradise Lost,' Professor Hampton's students explored problems of art, myth, theology and human experience as they have emerged in English literature from Milton through Wordsworth and Steinbeck.

"Oakland's humanities and arts faculty understand that a public university has a special obligation to make the centrality and utility of the humanities and arts known to the external communities that support our university. Acting on this understanding, Oakland humanists and artists have aided in the foundation of the Oakland Educational Collaborative, a consortium of the Oakland County educational institutions: the Oakland Intermediate School District, Oakland Community College and Oakland University. Oakland's English department has helped the collaborative compile a directory of the county's educational resources in the crucial areas of writing. Our Modern Languages department has joined the Oakland Intermediate School District in a joint-hiring project for the development of language curricula and in developing a network of secondary language teachers throughout the region. This summer, our Center for the Arts and Oakland





Oakland University believes that education in the humanities and the arts serve as both a foundation for a student's program of study and preparation for life — which often includes graduate work or continuing professional education, especially in technical fields.

Schools is offering the fourth annual Arts-for-Youth camps for children of ages seven through twelve, and we are also presenting our Meadow Brook Studies Program, a specially designed learning experience for creative young people from ages thirteen to seventeen.

"Oakland humanists have also been creative in responding to the complex training and educational needs of business and industry in southeast Michigan. Our Linguistics department has been active on two fronts: in devising a very successful series of executive seminars on cross-cultural communications for doing business in Japan; and in developing a ground-breaking research program for the application of linguistic theory to robotics and artificial intelligence. Our English department has worked extensively in the growing field of technical communications, making especially significant contributions to an acclaimed workshop series for the technical writing personnel of the Army Tank Command. Modern Languages faculty from Oakland have cooperated with the State Department of Commerce in publishing the "Michigan International Business Directory," and our arts faculty work with the Business Consortium for the Arts in southeast Michigan.

"Oakland University's motto, taken from Dante's great epic of heaven and hell, urges to pursue 'virtue and knowledge.' Since Dante wrote the phrase in the Italian of his day — *seguir virtute e canoscenza* — we might equally well understand him to mean 'follow excellence and awareness.' At the base of all humanist inquiry and of much artistic creation is the realization that such distinctions — distinctions of meaning, reference, taste, style — do in fact make a difference in all our lives. Convinced of this difference and deeply motivated by it, humanists and artists at Oakland University are very much in pursuit of an excellence whose meaning is richer and more manifold than the sum of what the paragraphs above can describe or imply."

Dean Copenhaver's remarks chronicle the importance and the contributions of the college. And as students continue to benefit from exposure to the traditional values, they, the economic sector and the community will reap the rewards of another university thrust — its economic development partnerships.

President Champagne has championed this emphasis as well, saying that what really happens when universities and industry work together is called technology transfer. The relationship results in a mutual sharing of expertise among all parties, including students, and those students can then take technology back into the corporate world.

Oakland has already entered into numerous such partnerships; for example, working in applied statistics and graphics design analysis with Ford Motor Company, in training programs with Chrysler Corporation, a major future tenant in the Oakland Technology Park, and with General Motors Corporation.

New affiliations are developing rapidly, thanks to the establishment of the new Center for Economic Development and Corporate Services. This university unit identifies industry needs and university strengths, and tries to match the two in programs that will serve all parties, including students.



Deepening the cross-cultural understanding of area executives embarking on foreign joint ventures is a focus of programs developed by Linguistics Professor William Schwab (left), Otto Langosch (right), a vice president of Vickers, Inc., of Troy, Michigan, and a diverse group of Oakland professors.



Additional centers that aid our economic development thrust are training and credit programs offered through the Division of Continuing Education, research and contract work through the Center for Robotics and Advanced Automation in the School of Engineering and Computer Science, and training workshops and seminars conducted for union and industry through the Ken Morris Labor Studies Center.

One major achievement of the university's thrust for relevance is taking shape on 1,500 acres adjacent to the university as tenants occupy the Oakland Technology Park. This park is symbolic of the way a university can stimulate and support community and economic development. Oakland was a founding force and is now a participant in the park. Tenants include Chrysler's proposed multi-million dollar technical center, GMF Robotics, EDS, Comerica, Inc., World Computer, Securedata, GKN Industries and Schostak Brothers, Inc., among others. Several supporting hotels are in development, too.

When President Champagne came to the university more than five years ago, one of his major goals was to build new bridges between the university and the community, to be responsive to economic needs and to excel in research and community service while never losing sight of the traditional values of the American public university.

The university efforts earned \$5,450,812 in external support last year for research, academic, student and university programs, an increase of \$1 million over the previous year.

The topics varied from basic research to solve the mystery of aging to a study of recognition traits in social wasps to research on artificial intelligence.

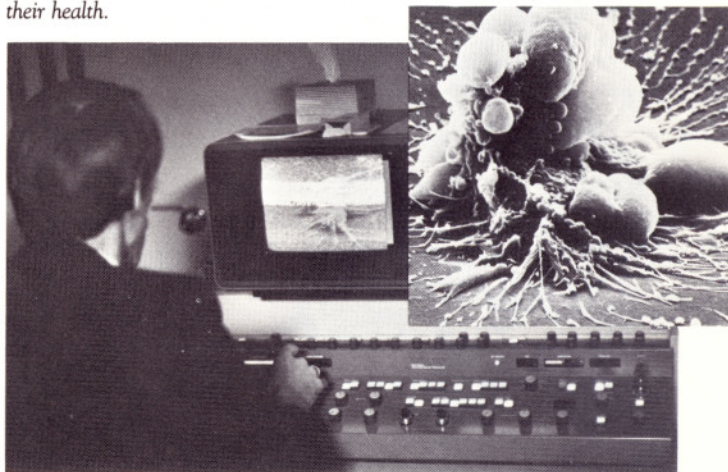
The Eye Research Institute received its prestigious CORE Facilities for Vision Research Grant from the National Eye Institute and will receive nearly \$750,000 in direct and indirect costs over the next five years. The new facilities will greatly increase the university's ability to conduct research on blinding eye diseases.

The university's community service offerings extend to the innovative Lowry Child Care Center; the Continuum Center, which schedules career development programs, personal growth seminars, and conferences; the Adult Career Counseling Center, which provides skill assessment and aptitude testing for adults; and the Aviation and Space Center, which offers space exploration materials for schools and adults in cooperation with the National Aeronautics and Space Administration. All the above units are in the School of Human and Educational Services.

And finally, there is another Meadow Brook on the Oakland scene — the Meadow Brook Center. This new facility consists of the Shotwell-Gustafson Pavilion, which will serve the university and the community as a conference and exhibition center, and the Meadow Brook Health Enhancement Institute. The institute will serve cardiac rehabilitation patients, provide "wellness" programs for individuals and industry, and serve as a research facility for health science programs.

In summing up the university's position, President Champagne has constantly paid tribute to the faculty throughout the university. They are of high quality, dedicated to their purpose and the lifeblood of the institution. They have, he said, provided the resources for Oakland University to become a comprehensive institution well-equipped to meet its goals of teaching, research and community service.

*Researchers at Oakland's Eye Research Institute use a powerful new electron microscope (top) to study eye disorders (inset). The Oakland Technology Park (center), which adjoins Oakland University, is tangible evidence of the university's commitment to building new bridges to the business community. Oakland's cardiac rehabilitation program, offered through the Meadow Brook Health Enhancement Institute (below), helps cardiac patients improve their health.*





# 1986 MEADOW BROOK EXECUTIVE COMMITTEE CHAIRPERSONS Mr. and Mrs. John R. Edman

---



As we open the 23rd season of the Meadow Brook Music Festival, we take great pride in saluting our volunteer leadership.

This year the Meadow Brook Music Festival Executive Committee, under the direction of Mr. and Mrs. John R. Edman, continues a tradition of dedicated service. We are appreciative of the time, thought, and care which this year's committee gives so generously. They make it possible for many thousands of people to enjoy a wide variety of music in a magnificent setting.

On behalf of Oakland University and the Meadow Brook Music Festival, I extend my deepest appreciation.

Joseph E. Champagne  
President  
Oakland University



# PAST CHAIRPERSONS



Mr. and Mrs. Semon Knudsen  
Chairpersons 1964



Mr. and Mrs. Rinehart S. Bright  
Chairpersons 1965



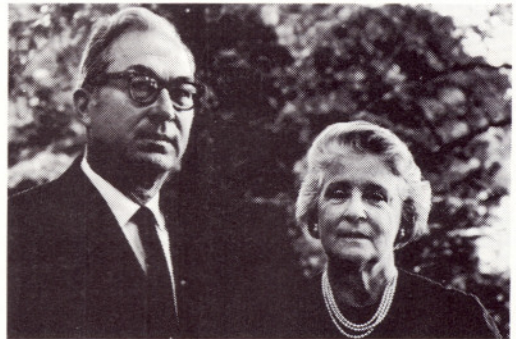
Mr. and Mrs. Ben D. Mills  
Chairpersons 1966



Mr. and Mrs. James O. Wright  
Chairpersons 1967



Mr. and Mrs. Virgil E. Boyd  
Chairpersons 1968



Mr. and Mrs. Marvin L. Katke  
Chairpersons 1969



Mr. and Mrs. E. M. Estes  
Chairpersons 1970



---

## PAST CHAIRPERSONS

---



Mr. and Mrs. John J. Riccardo  
Chairpersons 1971



Mr. and Mrs. William P. Benton  
Chairpersons 1972



Mr. and Mrs. Robert D. Lund  
Chairpersons 1973



Mr. and Mrs. Eugene A. Cafiero  
Chairpersons 1974



Mr. and Mrs. Donald E. Petersen  
Chairpersons 1975



Mr. and Mrs. F. James McDonald  
Chairpersons 1976



Mr. and Mrs. John C. Secrest  
Chairpersons 1977



Mr. and Mrs. Richard A. Vining  
Chairpersons 1978



# PAST CHAIRPERSONS



Mr. and Mrs. Bennett Bidwell  
Chairpersons 1979



Mr. and Mrs. Roger Smith  
Chairpersons 1980



Mr. and Mrs. Gerald Greenwald  
Chairpersons 1981



Mr. and Mrs. Harold A. Poling  
Chairpersons 1982



Mr. and Mrs. F. Alan Smith  
Chairpersons 1983



Mr. and Mrs. Stephan Sharf  
Chairpersons 1984



Mr. and Mrs. Louis Ross  
Chairpersons 1985



# 1986 MEADOW BROOK MUSIC FESTIVAL WOMEN'S COMMITTEE

## PRESIDENT

Mrs. Wayne A. Lundy

## VICE PRESIDENT

Mrs. Richard B. Armstrong

## RECORDING SECRETARY

Mrs. J. Leif Eareckson

## CORRESPONDING SECRETARY

Mrs. Lyman M. Forbes

## FINANCIAL SECRETARY

Mrs. Walter L. Scutt

## PARLIAMENTARIAN

Mrs. Charles Ashton

## EX-OFFICIO

Mrs. Thomas E. Thomas

## ADVISORY BOARD

### FASHION SHOW

Mrs. Richard G. Koenig

### GIFT SHOP

Mrs. Douglas M. Thornton

### LONG-RANGE PLANNING

Mrs. Thomas E. Thomas

### MEMBERSHIP AND DEVELOPMENT

Mrs. John B. Costello

### NOMINATING

Mrs. John B. Costello

Mrs. Marvin L. Molasky

Mrs. Raymond A. Pittman

### PARLIAMENTARIAN

Mrs. Charles Ashton

### RAFFLE

Mrs. Philip E. Gerwert

Mrs. Harry White

### WAYS AND MEANS

Mrs. Oswald L. Pfaffmann

Mrs. Stanley L. Capp

Mrs. Karl Kristen

Mrs. Eugene R. Mitchell

Mrs. William L. Mitchell

Mrs. Robert Smith

## COMMITTEE MEMBERS

Mrs. Raynold L. Allvin  
Mrs. Lowell V. Apeseche  
Mrs. Richard B. Armstrong  
Mrs. Charles H. Ashton  
Mrs. Ronald Avesian  
Mrs. J. Larry Barton  
Mrs. Marilyn J. Brooks  
Mrs. David Bull  
Mrs. R. G. Burroughs  
Mrs. Ralph A. Caponigro  
Mrs. Stanley L. Capp  
Mrs. Joseph E. Champagne  
Mrs. Joseph F. Collins  
Mrs. Francis J. Cook  
Mrs. John B. Costello  
Mrs. Gerald L. Decker  
Mrs. J. Leif Eareckson  
Mrs. Francis A. Engelhardt  
Mrs. Lyman M. Forbes  
Mrs. James M. Garrett  
Mrs. Philip E. Gerwert  
Mrs. Kenneth D. Holloway  
Mrs. Henry C. Johnson  
Mrs. Arthur Jones  
Mrs. Keith Kleckner  
Mrs. Richard G. Koenig

Mrs. Karl Kristen  
Mrs. J. Donald LaCroix  
Mrs. John W. Lazar  
Mrs. Wayne Lundy  
Mrs. Gerald Maas  
Mrs. Robert J. Mack  
Mrs. Robert A. Maddock  
Mrs. George Matthews  
Mrs. Richard A. McWhirter  
Mrs. Milton J. Miller  
Mrs. Eugene R. Mitchell  
Mrs. William L. Mitchell  
Mrs. Marvin L. Molasky  
Mrs. Donald O'Keefe  
Mrs. James Parrott  
Mrs. Ronald B. Petrella  
Mrs. O. L. Pfaffmann  
Mrs. Lewis N. Pino  
Mrs. Raymond A. Pittman  
Mrs. Harold A. Poling  
Mrs. Mark A. Richards  
Mrs. Donald Robertson  
Mrs. David Rodwell  
Mrs. William M. Rogers  
Mrs. Herman Rosenbusch

Mrs. Louis R. Ross  
Mrs. Ed Schroeder  
Mrs. John H. Schwartz  
Mrs. David W. Scott  
Mrs. Robert C. Scott  
Mrs. Will Scott  
Mrs. Walter Scutt  
Mrs. John C. Secrest  
Mrs. Stephan Sharf  
Mrs. Gerald L. Shultz  
Mrs. Robert Smith  
Mrs. David A. Stafseth  
Mrs. Fredrick Stare  
Mrs. Donald Stehr  
Mrs. Roger W. Stroup  
Mrs. Richard Sullivan  
Mrs. Robert W. Swanson  
Mrs. Daniel Tamburo  
Mrs. Thomas E. Thomas  
Mrs. Douglas M. Thornton  
Mrs. George T. Trumbull  
Mrs. Richard A. Vining  
Mrs. Raymon A. VonDrehle  
Mrs. Harry White  
Mrs. Minoru Yamasaki

## PAST PRESIDENTS

Mrs. Francis A. Engelhardt  
Mrs. Fredrick Stare  
Mrs. David W. Scott  
Mrs. Douglas M. Thornton  
Mrs. O. L. Pfaffmann  
Mrs. Eugene R. Mitchell  
Mrs. Thomas E. Thomas

## HONORARY MEMBERS

Mrs. Joseph E. Champagne  
Mrs. John R. Edman  
Mrs. Fredrick Stare  
Mrs. George T. Trumbull  
Mrs. Donald D. O'Dowd



# HIGHLIGHTS OF 1986



President of the Festival  
Women's Committee  
Mrs. Wayne Lundy



(left to right)  
Fashion Show Chairperson,  
Mrs. Richard G. Koenig  
Honorary Chairperson, Mrs. John R. Edman



(left to right)  
Fashion Show Committee Members  
Mrs. Charles Ashton  
Mrs. J. Leif Eareckson  
Mrs. Karl Kristen



Cochairpersons The Treble Clef Gift Shop  
Mrs. Marvin L. Molasky  
Missing  
Mrs. Thomas E. Thomas  
Mrs. Douglas M. Thornton



(left to right)  
Treble Clef Gift Shop Committee  
Mrs. Charles Ashton  
Mrs. William M. Rogers  
Mrs. Gerald L. Decker  
Missing  
Mrs. Raymond Pittman  
Mrs. Donald Robertson  
Mrs. R. G. Burroughs

Missing  
Mrs. Richard B. Armstrong  
Mrs. William L. Mitchell  
Mrs. Frances A. Engelhardt  
Mrs. Robert Smith  
Mrs. Lowell Apeseche  
Mrs. David Bull  
Mrs. Richard A. Vining  
Mrs. Robert J. Mack  
Mrs. Arthur Jones  
Mrs. Gerald L. Decker  
Mrs. Stephan Sharf  
Mrs. Eugene R. Mitchell  
Mrs. Daniel Tamburo  
Mrs. John Schwartz  
Mrs. O. L. Pfaffmann



(left to right)  
Cochairpersons 1986 Raffle  
Mrs. Harry White  
Mrs. Philip E. Gerwert



---

# SPECIAL ACKNOWLEDGMENTS

---

## THE KRESGE FOUNDATION

The Meadow Brook Music Festival expresses its appreciation to one of its most important benefactors — The Kresge Foundation.

In 1964 when the Festival was a dream, the Kresge Foundation made a \$76,000 gift to the capital fund in memory of civic leader and foundation trustee, Howard C. Baldwin, for whom the pavilion is named. A second gift a year later of \$50,000 made possible the permanent seating in the pavilion. Subsequently the Foundation provided an additional capital grant of \$33,000 which provided additional dressing rooms below stage, new electrical circuits, a sound reinforcement system and new restroom facilities. A grant of \$145,000 provided for the repair work in the pavilion and a box office addition in 1977. Most recently, a grant of \$100,000 has been used to upgrade the lighting system, structural improvements in and around the stage area, paving the service road and loading dock area, painting of the seats and girders, and general repair.

## LULA C. WILSON TRUST

The original gifts of the Lula C. Wilson Trust provided the concert shell for the stage house of the Music Festival. The well-known excellent acoustics of Meadow Brook distinguishes the Music Festival as one of the front-rank concert and amphitheatres in North America.

The continuing support of the Lula C. Wilson Trust assists the Music Festival in providing the finest cultural programs to enrich the community as a whole.

## MRS. GEORGE T. TRUMBULL

The original gift of Mr. and Mrs. George T. Trumbull made possible the construction of the Trumbull Terrace dining facility, and patrons of the Meadow Brook Music Festival continue to benefit from their generosity. Mrs. Trumbull has provided improvements to Trumbull Terrace, the magnificent flowers on the grounds, and the tables and chairs in the Cafe Promenade. We are grateful for her continued interest and support.

## MEMORIAL CONCERTS

The Jean-Pierre Rampal concert on July 12 is designated The 1986 V. Everett Kinsey Memorial Concert.

The Skitch Henderson concert on July 25 is designated The 1986 Louis C. Goad Memorial Concert.

The Preservation Hall concert on July 29 is designated The 1986 John S. Judd Memorial Concert.

## FESTIVAL CO-SPONSORS

The Festival gratefully acknowledges support of the following co-sponsors.

Detroit Free Press, Detroit News, Chrysler Corporation Fund, Comerica, Hudson's, Observer & Eccentric, WJR, WQRS, CKLW, WJZZ, WHYT, WRIF, WOMC, WJOI, WMJC/WHND.

The Meadow Brook Music Festival is funded in part by grants from the Michigan Council for the Arts and the National Endowment for the Arts.



---

# 1986 Meadow Brook Music Festival/Theatre

---

## Executive Committee

Mr. and Mrs. John R. Edman, General Chairpersons  
Mr. and Mrs. Harold K. Sperlich, Vice Chairpersons  
Mr. and Mrs. Louis R. Ross, Past General Chairpersons

### *Advertising and Marketing*

Mr. and Mrs. Joseph G. Schulte

### *Long Range Planning*

Mr. and Mrs. Stephan Sharf

### *Corporate Subscription Sales*

Mr. and Mrs. Carl R. Lindell  
Mr. and Mrs. Arthur L. Wiseley  
Mr. and Mrs. Walton A. Lewis  
Mr. and Mrs. Nicholas V. Scheele  
Mr. and Mrs. Thomas T. Stallkamp  
Mr. and Mrs. James A. Unruh

### *Festival Women's Committee*

Mr. and Mrs. Wayne A. Lundy

### *Finance*

Mr. and Mrs. John E. Rhame  
Mr. and Mrs. Clinton D. Lauer  
Mr. and Mrs. David R. Platt

### *Flint Area*

Mr. and Mrs. Thomas L. Pond

### *Public Relations*

Mr. and Mrs. William G. Quigley Jr.

### *Program Advertising*

Mr. and Mrs. Harold E. Allen  
Mr. Joseph A. Campana  
Mr. and Mrs. Frederick K. Cody  
Mr. and Mrs. Philip Guarascio  
Mr. and Mrs. John J. Morrissey  
Mr. and Mrs. John B. Vanderzee

### *Theatre Guild*

Mr. and Mrs. William R. Atwood

### *Rochester Festival Club*

Mr. and Mrs. William R. Goudie  
Dr. and Mrs. Thomas A. Cook

## Corporate Finance Captains

Robert J. Binder  
Gilbert P. Burford  
Keith W. Dunbar  
Norman F. Ehlers  
Ronald Gardhouse  
Tim A. Guith  
Robert E. Hatfield  
Richard Haupt  
James C. Hitchcock  
Clare P. Horwood

Jon W. Ladd  
Joseph G. Iamarino  
Richard E. Loeding  
Ronald A. Majeske  
H. C. Moritz  
Ronald S. Nay  
Paul R. O'Hara  
Barry D. Price  
Nicholas P. Sneath  
Ronald L. Stewart

Warren J. Swan  
Peter Tottis  
Harry J. Tuller  
James D. Unis, Jr.  
James T. Watson  
Kathryn West  
Jerome B. York  
Frank D. Zella  
Steven E. Zimmer



# 1986 MEADOW BROOK ROCHESTER FESTIVAL CLUB

## CO-CHAIRPERSONS

Mr. and Mrs. William R. Goudie  
Dr. and Mrs. Thomas Cook

## COMMITTEE

Dr. and Mrs. Richard Brooks  
Dr. and Mrs. J. Kenneth Cerny  
Mr. and Mrs. Paul Chastney  
Mr. and Mrs. James P. Colbert  
Mr. and Mrs. Phil Culmone  
Mr. and Mrs. Richard Doner  
Dr. and Mrs. David Hollett

Mr. and Mrs. Fred Houghten  
Mr. and Mrs. Charles Howell  
Mr. and Mrs. Noel C. Huyck  
Mr. and Mrs. Steven Kavulich  
Dr. and Mrs. Robert Kobylarz  
Mr. and Mrs. Wesley L. Koch, Jr.  
Mr. and Mrs. Anthony P. Lauri

Mr. and Mrs. Roy E. Parrott  
Mr. and Mrs. David Phelps  
Mr. and Mrs. Graham Silcox  
Mr. and Mrs. Raymond Smith  
Miss Nathalie Stevenson  
Mr. and Mrs. Gerald Tarquinio  
Mr. and Mrs. James Zubkus



Bill and Jan Goudie, Chairpersons 1986



Pat and Tom Cook, Cochairpersons 1986



Guests at the Major Donor Dinner; Anneliese Tippery, Marilyn Cerny, and Kenneth Cerny.



Former Chairperson Marge Brooks, Jacqueline Brooks and Denis Simmons.



Bill Goudie, Cathy McCoy, Peter Roemer, Jan Goudie, and Michael McCoy.



# 1986 ROCHESTER FESTIVAL CLUB

## 1985 Rochester Festival Club

### Major Donors

Dr. Lee Anschuetz  
 Dr. and Mrs. John V. Balian  
 Mr. Lawrence Beddow  
 Mr. and Mrs. Robert Bemis  
 Mr. William Bleisch  
 Mr. and Mrs. David D. Bratton  
 Dr. and Mrs. Richard G. Brooks  
 Dr. and Mrs. Roger C. Byrd  
 Mr. and Mrs. Anthony J. Carmen  
 Mr. and Mrs. Carroll B. Chapman  
 Mr. and Mrs. Lester Paul Chastney  
 Mr. and Mrs. Harold Coltman  
 Dr. and Mrs. Thomas A. Cook  
 Mr. and Mrs. John R. Curtin  
 Mr. and Mrs. Richard J. DeLoof  
 Mr. and Mrs. Al W. Dittrich  
 Dr. and Mrs. Peter A. Duhamel  
 Dr. and Mrs. Patrick H. Dwyer  
 Mr. and Mrs. Donald K. Easley  
 Dr. and Mrs. William L. Ebinger  
 Mr. and Mrs. H. Bernard Ernst  
 Dr. and Mrs. Arthur D. Even  
 Federal-Mogul Corp.  
 Dr. and Mrs. Dean S. Fields  
 Mr. and Mrs. Keith D. Gardels  
 Mr. and Mrs. R. Raymond Gorshe  
 Mr. and Mrs. William R. Goudie  
 Dr. and Mrs. James Greenlees  
 Mr. and Mrs. Dale Hanson  
 Mr. and Mrs. David Hollett  
 Dr. and Mrs. James V. Huebner  
 Mr. and Mrs. Noel Huyck  
 Mr. and Mrs. Edward Ingalls  
 Mr. and Mrs. Robert H. Jeske  
 Mr. and Mrs. William H. John  
 Mr. and Mrs. Kenneth D. Johnston  
 Mr. and Mrs. Steven Kavulich  
 Mr. and Mrs. Kenneth Kernen  
 Dr. and Mrs. John S. Kerns  
 Mr. and Mrs. Wesley L. Koch, Jr.  
 Mr. and Mrs. Charles H. Kupsky  
 Mr. and Mrs. M. W. Markwardt  
 Mr. and Mrs. Robert S. Martin  
 Mr. and Mrs. Michael McCoy  
 Dr. and Mrs. Thomas Millman  
 Dr. and Mrs. Moufid Mitri  
 Mr. and Mrs. William A. Mitzelfeld  
 Mr. and Mrs. Douglas E. Monks  
 Mr. Robert (Art) Moran  
 Mr. and Mrs. Patrick E. Moran  
 Mr. and Mrs. Daniel T. Murphy, Jr.  
 Mr. and Mrs. Terrence J. O'Connor  
 Mr. and Mrs. Roy E. Parrott  
 Mr. and Mrs. David Phelps  
 Mr. and Mrs. George D. Poffenberger  
 Mr. and Mrs. William Potere  
 Mr. and Mrs. Peter Roemer  
 Mr. and Mrs. William H. Ross  
 Mr. and Mrs. Charles L. Schmitz  
 Mr. and Mrs. Kenneth Schwark  
 Dr. Walter J. Sepura  
 Mr. and Mrs. James M. Shook  
 Mr. and Mrs. D. Fred Smith  
 Dr. and Mrs. Ever A. Swanson  
 Mr. and Mrs. Gerald A. Tarquinio  
 Dr. and Mrs. Raymond L. Tremblay  
 Ms. Janet K. Varner  
 Mr. and Mrs. Herman Walker  
 Mr. and Mrs. William R. Wallin

Mr. and Mrs. Clarence E. Whitbey  
 Mr. and Mrs. Ron Wonboy  
 Mr. and Mrs. Robert Wysocki

### Contributors

Dr. Larry K. Aagesen  
 Mr. and Mrs. Charles Allen  
 Avon Broach & Production Co.  
 Mr. and Mrs. William D. Bardes  
 Mr. and Mrs. J. T. Battenberg  
 Mr. and Mrs. William Beardmore  
 Mr. and Mrs. Donald Beattie  
 Mr. and Mrs. William Belaney  
 Mr. and Mrs. Midford Bennett  
 Mr. Bruce A. Bordine  
 Dr. and Mrs. Thomas Borgula  
 Mrs. Edward N. Bowen  
 Mr. and Mrs. Thomas Brady  
 Mr. and Mrs. Dick Brode  
 Mr. and Mrs. W. P. Burke  
 Mrs. R. G. Burroughs  
 Dr. and Mrs. J. Kenneth Cerny  
 Mr. and Mrs. Charles E. Chambliss  
 Mr. and Mrs. James Colbert  
 Mr. and Mrs. Edward Colosimo  
 Dr. and Mrs. Paul Croissant  
 Mr. and Mrs. William Crum  
 Dr. and Mrs. Frank N. Derr  
 Mr. and Mrs. Raymond DeSteiger  
 Mr. and Mrs. Richard Doner  
 Mr. and Mrs. Paul Drinkard  
 Dr. and Mrs. John Dudek  
 John and Kathy Dziurman  
 Dr. and Mrs. J. W. Eastman  
 Mr. and Mrs. Larry Edwards  
 Dr. and Mrs. David Elliot  
 Mr. and Mrs. Michele Ferrara  
 Mr. and Mrs. Duane Finch  
 Dr. Horace Floyd  
 Mr. Donald D. Foss  
 Dr. and Mrs. Donald P. Fox  
 Mr. and Mrs. Len Gay  
 Dr. and Mrs. Melvin J. Gay  
 Mr. and Mrs. Ken Gertz  
 Girardot Inc. Realtors  
 Mr. and Mrs. William Gilbert  
 Mr. and Mrs. Dennis Gormley  
 Dr. and Mrs. James Greer  
 Mr. and Mrs. William Gruebnaue  
 Mr. and Mrs. Robert Hague  
 Dr. and Mrs. Arch Hall  
 Mr. and Mrs. George Hammond  
 Mr. and Mrs. Peter J. Harris  
 Mr. and Mrs. Carl Hasselwander  
 Mr. Robert Head  
 Mr. and Mrs. John Hoagland  
 Mr. and Mrs. Fred Houghton  
 Mr. and Mrs. Daniel J. Jarackas  
 Dr. and Mrs. Eric Johnston  
 Jonna Construction Co.  
 Mr. and Mrs. Richard P. Kageff  
 Mr. and Mrs. Terrance E. Kaye  
 Mr. and Mrs. Dan Kennedy  
 Mr. and Mrs. Brian Kett  
 Kirco Realty & Development Ltd.  
 Mr. and Mrs. Tom Klein  
 Mr. Roger Knapp  
 Dr. and Mrs. Robert A. Kobylarz  
 Marv and Kathy Koler  
 Dr. and Mrs. Bruce Kresge  
 Dr. Carl Kuntzman

Mr. and Mrs. Kurtenbach  
 Mr. Dick Lantz  
 Mr. and Mrs. Anthony Lauri  
 Mr. and Mrs. Robert Leonhard  
 Mr. and Mrs. Warren Lepp  
 Mr. Ben R. Lindquist  
 Mr. and Mrs. Harris O. Machus  
 Mr. and Mrs. John Mallman  
 Mr. and Mrs. Lawrence Matesa  
 Mr. and Mrs. Dan Matthews  
 Dr. Sue A. McCutcheon  
 Mr. and Mrs. Robert J. McGarry  
 Edward J. McKibbin, CPA  
 Hon. Judge and Mrs. McNally  
 Dr. and Mrs. Joseph Messana  
 Mr. and Mrs. Robert J. Meyer  
 Michigan Metal Craft  
 Mr. and Mrs. Lamont Mitzelfeld  
 Mr. and Mrs. David E. Mowere  
 Mr. and Mrs. Nicholas V. S. Mumford, Jr.  
 Dr. and Mrs. Mark Murphy  
 Ms. Marilyn Nix  
 Mr. and Mrs. Ralph Nelson  
 Mr. and Mrs. Dan Newman  
 Mr. and Mrs. Kenneth R. North  
 Mr. and Mrs. Bruce Otterberg  
 Mr. and Mrs. Edgar Parks  
 The Pharmacy  
 Mr. and Mrs. Daniel Phelps  
 Dr. and Mrs. Andrew Pasternak  
 Mr. and Mrs. Harold Pocklington  
 Mr. and Mrs. George Poffenberger  
 Mr. and Mrs. Robert Potere  
 Dr. Raj Prasad  
 Mr. and Mrs. Thomas Pratt  
 Mr. and Mrs. James Preston  
 Dr. Thomas Przybylski  
 Mr. and Mrs. Glenn Purdy  
 Mr. and Mrs. William Richardson  
 Mr. and Mrs. David Rickabus  
 Dr. Ulrich Ringwald  
 Mr. and Mrs. Thomas Roberts  
 Rochester Chamber of Commerce  
 Rochester Telephone Answering Service  
 Mr. and Mrs. Kenneth Roemig  
 Mr. and Mrs. Thomas Schaden  
 Mr. and Mrs. Wilhelm Schmelzer  
 Mr. and Mrs. John Schodowski  
 Dr. and Mrs. John Schultz  
 Dr. and Mrs. Herb Scolnick  
 Mr. and Mrs. Michael Serement  
 Mr. Arthur Sezewick  
 Mr. and Mrs. David Shellenbarger  
 Judge and Mrs. Robert Shipper  
 Mr. and Mrs. Graham Silcox  
 Mr. and Mrs. Michael Skiles  
 Mr. and Mrs. James Smalley  
 Drs. Joel and Kathy Smiler  
 Mr. and Mrs. Raymond A. Smith  
 Mr. and Mrs. Frank Stefani  
 Nathalie Stevenson  
 Drs. Elaine and King Tan  
 Mr. and Mrs. Lawrence Ternan  
 Mr. and Mrs. John Toepel  
 Mr. and Mrs. J. Terry Upton  
 Dr. and Mrs. William Veitch  
 Dr. and Mrs. Marvin Weisman  
 Dr. and Mrs. Ralph F. Woodbury  
 Mr. and Mrs. Harlan Worden  
 Dr. and Mrs. Robert Zobl  
 Mr. and Mrs. James Zubkus



# DETROIT SYMPHONY ORCHESTRA

## Gunther Herbig, Music Director



The Detroit Symphony Orchestra has been a part of Detroit's cultural and civic life since the Symphony's founding in 1914. In the 72 years since then, its presence has grown in the international community as well, strengthened by an impressive roster of conductors, recordings, a much-heralded European tour and radio broadcasts.

Today's Symphony is testimony to the spirit and vision of a group of civic-minded women who sponsored the first Detroit Symphony concert, conducted by the Symphony's first music director, Weston Gales (1914-17).

In subsequent years, the Symphony gradually built upon its reputation as a world class orchestra through the efforts of guest conductors and music directors Ossip Gabrilowitsch (1919-36); Victor Kolar and Franco Ghione (1936-42); Karl Krueger (1943-49); Paul Paray (1952-62); Sixten Ehrling (1963-73); Aldo Ceccato (1973-77); and Antal Dorati (1977-81). Its reputation was further enhanced by the appointment in 1984 of Music Director Gunther Herbig.

Maestro Herbig has appeared in North America with the New York Philharmonic, Saint Louis Symphony, orchestras of Montreal, Toronto, Los Angeles, Pittsburgh, Baltimore, and with the National Symphony in Washington, to name a few.

He has toured with the Dresden Philharmonic and the Leipzig Gewandhaus orchestras in Europe, Japan and Mexico, and he has recorded some 35 discs on the Eterna label with the State Orchestra of Berlin, the Berlin Symphony Orchestra and the Dresden Philharmonic. Performances led by Maestro Herbig have been broadcast on radio in Berlin and Leipzig, in Japan, on the BBC in Great Britain, and in the United States.

Maestro Herbig led the Detroit Symphony in its April 1985 Carnegie Hall concert, making his own Carnegie Hall debut. Then in June 1985, at the invitation of the Casals Festival, he conducted the Detroit Symphony in three festival concerts in San Juan, Puerto Rico. He also led the orchestra's East Coast tour in October 1985, and returned to Washington, D.C. to lead the Detroit Symphony in a special concert celebrating the 99th birthday of the Statue of Liberty.

Detroit Symphony concerts are regularly broadcast on radio in 11 major markets, including New York, Chicago and Washington, and on more than 50 National Public Radio stations by satellite feed. The broadcasts are produced by WQRS-FM, and they are sponsored by General Motors Corporation.

Detroit Symphony recordings currently are available on the London label. Among the most popular are Antal Dorati's recordings of Stravinsky's *The Firebird*, *The Rite of Spring*, for which the compact disc version earned the Grand Prix du Disque, and Tchaikovsky's *Overture 1812*.

Meadow Brook Music Festival at Oakland University, north of Detroit, is the Detroit Symphony's home for eight weeks every summer. It is recognized as one of the nation's major summer music festivals. For the second season, the Chrysler Concert Series of Detroit Symphony performances is sponsored by the Chrysler Corporation Fund.



# DETROIT SYMPHONY ORCHESTRA

**Gunther Herbig**  
Music Director

**Antal Dorati**  
Conductor Laureate

**Michael Krajewski**  
Assistant Conductor

**Stephen Stein**  
Exxon/Arts Endowment Conductor

## First Violins

Gordon Staples+  
Concertmaster  
Bogos Mortchikian  
Associate Concertmaster  
Joseph Goldman  
Gordon Peterson  
Assistant  
Concertmasters  
Geoffrey Applegate\*  
Beatriz Budinszky\*  
Marguerite Deslippe\*  
Derek Francis  
Alan Gerstel  
Nicholas Zonas  
Elias Friedenstohn\*  
Malvern Kaufman\*  
Richard Margitza\*  
Linda Snedden-Smith\*  
Ann Ourada Strubler\*  
LeAnn Toth\*  
Margaret Tundo\*  
Stacey Woolley\*  
Velda Kelly\*\*

## Second Violins

Felix Resnick++  
Alvin Score  
Lillian Fenstermacher  
Ricardo Cyncynates  
Ronald Fischer\*  
Lenore Iatzko\*  
Walter Maddox  
Roy Bengtsson  
Thomas Downs  
Yien Hung\*  
Robert Murphy\*  
Jacob Robbins\*

Bruce Smith\*  
Joseph Striplin\*  
Edouard Kesner  
James Waring\*

## Violas

David Ireland++  
Philip Porbe  
Eugenia Staszewski  
LeRoy Fenstermacher  
Hart Hollman  
Walter Evich  
Gary Schnerer  
Catherine Compton  
Vincent J. Lionti  
Glenn Mellow  
Darryl Jeffers

## Violoncellos

Italo Babini+  
James C. Gordon Chair

Marcy Chanteaux++  
John Thurman  
Mario DiFiore  
David Levine  
Debra Fayroian\*  
Barbara Hassan  
David Saltzman  
Carole Gatwood\*  
Haden McKay\*  
Paul Wingert\*  
Jeffrey Butler\*

## Basses

Robert Gladstone+  
Stephen Molina++  
Maxim Janowsky  
Linton Bodwin  
Stephen Edwards  
Craig Rifel

Donald Pennington  
Marshall Hutchinson  
Raymond Benner

## Harp

Elyse Ilku+

## Flutes

Ervin Monroe+  
Shaul Ben-Meir  
Robert Patrick++  
Clement Barone

## Piccolo

Clement Barone

## Oboes

Donald Baker+  
Shelley Heron  
Robert Sorton++  
Treva Womble

## English Horn

Treva Womble

## Clarinets

Paul Schaller+  
Douglas Cornelsen  
Laurence Liberson++  
Oliver Green

## E-flat Clarinet

Laurence Liberson

## Bass Clarinet

Oliver Green

## Bassoons

Robert Williams+  
Victoria King  
Paul Ganson++  
Lyell Lindsey

## Contrabassoon

Lyell Lindsey

## Horns

Eugene Wade+  
Bryan Kennedy  
Corbin Wagner  
Willard Darling  
Mark Abbott++  
Keith Vernon

## Trumpets

Ramon Parcels+  
Kevin Good  
Alvin Belknap++  
Gordon Smith

## Trombones

Raymond Turner+  
Joseph Skrzynski  
Nathaniel Gurin++  
Randall Hawes

## Tuba

Wesley Jacobs+

## Timpani

Salvatore Rabbio+  
Robert Pangborn++

## Percussion

Robert Pangborn+  
Norman Fickett++  
Raymond Makowski  
Sam Tundo

## Librarian

Elkhonon Yoffe  
Charles Weaver, Assistant

## Personnel Manager

Oliver Green  
Stephen Molina, Assistant



+Principal  
++Assistant Principal    \*\*Orchestra Fellow, Music Assistance Fund  
\*These members may voluntarily revolve seating within the section on a regular basis.



Q



# 1986 MAJOR DONORS

## TO

### THE MEADOW BROOK MUSIC FESTIVAL AND THEATRE

A T & G Company, Inc.  
 Mrs. Richard F. Adair\*  
 Mr. and Mrs. Felix T. Adams\*  
 Addy-Morand Machine Company  
 Mr. and Mrs. John F. Allen\*  
 Allied Automotive Products  
 Allied Corporation Foundation  
 American Motors Corporation  
 American Safety Equipment Corp.  
 Dr. Lee H. Anschuetz\*  
 Approved Manufacturing Company, Inc.  
 B & E Manufacturing, Inc.  
 Mr. and Mrs. William B. Bachman, Jr.\*  
 BAE Industries, Inc.  
 Dr. and Mrs. John V. Balian\*  
 Dr. and Mrs. Guy D. Barnicoat\*  
 BASF Corporation Chemicals Division  
 BASF Corporation - Inmont  
 Mr. and Mrs. Howard P. Baum  
 Mr. and Mrs. Theodore R. Beck\*  
 Beckers Lay-Tech Inc.  
 Mr. Lawrence R. Beddow\*  
 Mr. and Mrs. Robert J. Bemis\*  
 Mr. and Mrs. M. G. Bibbee  
 Mr. and Mrs. Charles E. Black  
 Mr. and Mrs. William R. Bleisch  
 Bohn Aluminum & Brass/  
 Wickes Manufacturing  
 Borg-Warner Corporation  
 John A. Bott  
 Dr. and Mrs. Michael F. Boyle\*  
 Mr. and Mrs. David D. Bratton\*  
 Dr. and Mrs. Richard G. Brooks\*  
 Mr. and Mrs. George A. Brundrett\*  
 The Buchanan Co./Southern Moldings, Inc.  
 The Budd Company  
 Burlington Northern Air Freight  
 Burroughs Corporation  
 Dr. and Mrs. Roger C. Byrd\*  
 Mr. and Mrs. Ralph A. Caponigro\*  
 Mr. and Mrs. Anthony J. Carmen, Jr.\*  
 Central Transport, Inc.  
 Mr. and Mrs. Carroll B. Chapman, Jr.\*  
 Mr. and Mrs. Lester Paul Chastney\*  
 Mr. and Mrs. Robert Check\*  
 Collins and Aikman Corp.  
 Mr. and Mrs. Joseph F. Collins\*  
 Mr. and Mrs. Harold R. Coltman\*  
 Comau Productivity Systems  
 Comerica Incorporated  
 Commercial Contracting Corporation  
 Complete Auto Transit, Inc.  
 Continental Plastics Co.  
 Dr. and Mrs. Thomas A. Cook\*  
 Mr. and Mrs. Ronald H. Cooley\*  
 Creative Industries Group, Inc.

Cross & Trecker Foundation  
 Mr. and Mrs. John R. Curtin\*  
 Mr. and Mrs. David W. Dale\*  
 Mr. and Mrs. Fred E. Darter\*  
 Mr. and Mrs. John W. Day  
 Dayton Walther Corporation  
 Louise O. Delcourt  
 Mr. and Mrs. Richard J. DeLoof\*  
 Detroit Edison  
 Mr. and Mrs. Richard W. Dilloway\*  
 Mr. and Mrs. Al W. Dittrich\*  
 Mr. and Mrs. Steve Dolen\*  
 Douglas & Lomason Company  
 Dr. and Mrs. Peter A. Duhamel\*  
 Mr. and Mrs. F. Charles Duryea, Jr.\*  
 Dr. and Mrs. Patrick H. Dwyer\*  
 E & L Transport Company  
 Eagle Packaging Corporation  
 Mr. and Mrs. Donald K. Easley\*  
 Eaton Corporation  
 Dr. and Mrs. William L. Ebinger\*  
 Mr. and Mrs. Frank Eland\*  
 Mr. and Mrs. Patrick A. Elwell\*  
 Mr. and Mrs. Francis A. Engelhardt\*  
 Mr. and Mrs. H. Bernard Ernst\*  
 Dr. and Mrs. Arthur D. Even\*  
 Ex-Cell-O Corporation  
 Dr. Neil Farkas  
 Federal-Mogul Corp.  
 Fetz Engineering Company  
 Dr. and Mrs. Dean S. Fields\*  
 Firestone Tire & Rubber Co.  
 Fischbach/Natkin Company  
 Mr. and Mrs. Stephen A. Fitzpatrick\*  
 Fleet Carrier  
 Mr. and Mrs. Clyde Foster\*  
 Friends of the Arts/St. Clair Comm. College  
 Frisbie Moving and Storage Company  
 Mr. and Mrs. Keith D. Gardels\*  
 Dr. and Mrs. Zack G. Gardlund\*  
 GenCorp Foundation, Inc.  
 Giffels Associates, Inc.  
 GKN Automotive Components Inc.  
 Mrs. L. C. Goad\*  
 Goodyear Tire & Rubber Company  
 Mr. and Mrs. R. Raymond Gorshe\*  
 Mr. and Mrs. William R. Goudie  
 Dr. and Mrs. James Greenlees\*  
 Glenda and Gerald Greenwald  
 Grow Group, Inc.  
 Haden Schweitzer Corporation  
 Mr. and Mrs. David Handleman\*  
 Mr. and Mrs. Dale F. Hanson\*  
 Mr. and Mrs. Barry R. Harper\*  
 Hi Tech Tool Industries, Inc.  
 Mr. and Mrs. David Hollett

Mr. and Mrs. Philip J. Houdek\*  
 Mr. and Mrs. Robert G. Howald, Jr.\*  
 Howell Industries, Inc.  
 Dr. and Mrs. James V. Huebner\*  
 Mr. and Mrs. Noel C. Huyck\*  
 Industries Gemetec Inc.  
 Mr. and Mrs. Edward Ingalls\*  
 Inter-Lakes Steel Products Co.  
 International Business Machines  
 Mr. Gerald D. Isaac  
 Richard J. Janes  
 Mr. and Mrs. Robert H. Jeske\*  
 Mr. and Mrs. William H. John\*  
 Johnson Controls/Automotive Systems Group  
 Mr. and Mrs. Henry Clyde Johnson\*  
 Mr. and Mrs. Kenneth D. Johnston\*  
 Jones Transfer Company  
 Mr. and Mrs. A. Randolph Judd\*  
 Mrs. John S. Judd\*  
 Kmart Corporation  
 Mr. and Mrs. Marvin L. Katke\*  
 Mr. and Mrs. Steven Kavulich\*  
 Kelsey-Hayes Company  
 Mr. and Mrs. Stanley A. Kern\*  
 Mr. and Mrs. Kenneth A. Kernen\*  
 Dr. and Mrs. John S. Kerns\*  
 The Knudsen Foundation  
 Mr. and Mrs. Wesley L. Koch, Jr.\*  
 Mrs. Nathan O. Krause  
 (In memory of "Nate Krause")\*  
 Kuhlman Corporation  
 Mr. and Mrs. Charles H. Kupsky\*  
 F. Joseph Lamb Co.  
 Lamb Technicon Corp.  
 Mr. and Mrs. Frank A. Lanza\*  
 Laughter Corporation  
 Lear Siegler, Inc.  
 Leaseway Transportation Corp./Auto. Group  
 Dr. and Mrs. Berton L. London\*  
 Mr. and Mrs. Robert J. Long\*  
 The Lyon Foundation  
 Mr. and Mrs. John P. Maloney\*  
 Mr. and Mrs. M. W. Markwardt\*  
 Mr. and Mrs. Robert S. Martin  
 Mr. and Mrs. Kenneth J. McCarter\*  
 Mr. and Mrs. Michael D. McCoy\*  
 Mr. and Mrs. Donald D. McCready\*  
 Mr. and Mrs. Robert J. McGarry\*  
 Mr. and Mrs. Donald E. McMinn\*  
 Meadow Brook Theatre Guild  
 Metropolitan Life Foundation  
 Michigan Bell  
 Michigan Rivet Company  
 Mr. and Mrs. Constanti V. Micuda\*  
 Mr. and Mrs. John D. Miller  
 Mr. and Mrs. Milton J. Miller



# 1986 MAJOR DONORS

## TO

### THE MEADOW BROOK MUSIC FESTIVAL AND THEATRE

Dr. and Mrs. Thomas Millman  
 Mr. and Mrs. Eugene R. Mitchell\*  
 Mr. and Mrs. William L. Mitchell\*  
 Dr. and Mrs. Moufid Mitri\*  
 Mitsubishi Heavy Industries America, Inc.  
 Mr. and Mrs. William A. Mitzelfeld\*  
 Mr. and Mrs. Douglas E. Monks\*  
 Mr. and Mrs. Patrick E. Moran\*  
 Mr. Robert (Art) Moran\*  
 Morris Associates, Inc.  
 Motorola, Inc.  
 Mrs. Charles S. Mott\*  
 Mr. and Mrs. Daniel T. Murphy, Jr.\*  
 National Bank of Detroit  
 NCR Corporation  
 Mr. and Mrs. George M. Newton\*  
 Nippondenso Sales, Inc.  
 Mr. and Mrs. Charles A. O'Brien\*  
 John L. O'Connor\*  
 Mr. and Mrs. Terrence J. O'Connor\*  
 Parker Hannifin Corporation/  
 Fluidpower Sales Division  
 Mr. and Mrs. Roy E. Parrott\*  
 Mr. Theodore P. Paulnock\*  
 Peat, Marwick, Mitchell & Co.  
 Peugeot Engines  
 Mr. and Mrs. O. L. Pfaffmann\*  
 Mr. and Mrs. David Phelps  
 Mr. and Mrs. Don G. Pixley\*  
 Mr. and Mrs. David R. Platt  
 Mr. and Mrs. George D. Poffenberger\*  
 Mr. and Mrs. Harold A. Poling\*  
 Mr. and Mrs. William R. Potere, Jr.\*  
 Pridgeon & Clay, Inc.

Prince Corporation  
 Regal Stamping  
 Mr. and Mrs. John J. Riccardo\*  
 Mr. Howard T. Rice\*  
 Rockwell International Automotive  
 Operations  
 Mr. and Mrs. Peter Roemer\*  
 Mr. and Mrs. Irving Rose\*  
 Ross Roy, Inc.  
 Mr. and Mrs. William H. Ross\*  
 Mrs. Kay F. Ryan\*  
 Schlafer Iron & Steel Co.  
 Mr. and Mrs. Charles L. Schmitz\*  
 Mr. and Mrs. Kenneth Schwark  
 Mr. and Mrs. David W. Scott\*  
 Mr. and Mrs. John C. Secrest\*  
 Dr. Walter J. Sepura\*  
 Mr. and Mrs. Ian C. Shaw\*  
 Sheller-Globe Corporation  
 Mr. and Mrs. James M. Shook\*  
 A. G. Simpson Company  
 Simpson Industries Fund  
 George M. and Mabel H. Slocum  
 Foundation  
 Mr. and Mrs. D. Fred Smith\*  
 Mr. and Mrs. Kenneth F. Smith  
 Dr. and Mrs. John F. Solverson\*  
 The Stare Fund  
 Dr. and Mrs. Frederick J. Stare\*  
 Mr. and Mrs. Charles R. Steele\*  
 Patricia A. and Robert C. Stempel  
 Mr. and Mrs. Steve Stolaruk\*  
 Stone Container Corporation  
 The Stroh Brewery Company

Dr. and Mrs. Ever A. Swanson\*  
 Mr. Alvin T. Swope  
 Mr. and Mrs. Gerald A. Tarquinio\*  
 Mr. and Mrs. LeRoy D. Taylor  
 Tenneco Automotive  
 J. Walter Thompson USA  
 Mr. and Mrs. Douglas M. Thornton\*  
 Timely Air Freight  
 Mr. and Mrs. Arthur S. Tobiassen\*  
 The Torrington Company  
 Touche Ross & Co.  
 Dr. and Mrs. Raymond L. Tremblay\*  
 Mrs. George T. Trumbull\*  
 TRW Steering & Suspension Division  
 United Technologies Automotive  
 R.A. Van De Velde & Associates  
 Ms. Janet K. Varner\*  
 Mr. and Mrs. Richard A. Vining\*  
 Vispac, Inc.  
 Volkswagen of America, Inc.  
 Walbridge Aldinger  
 Mr. and Mrs. Herman Walker  
 Hiram Walker & Sons, Inc.  
 Mr. and Mrs. William R. Wallin\*  
 Mr. and Mrs. H. Wayne Wells\*  
 Mr. and Mrs. Raymond W. West\*  
 Mr. and Mrs. Clarence E. Whitbey\*  
 White Tower Laundry & Cleaners  
 Mr. and Mrs. Sam B. Williams\*  
 Mr. and Mrs. Ronald A. Wonboy\*  
 Mr. and Mrs. Robert W. Wysocki\*  
 Young & Rubicam Inc.  
 Arthur Young

*\*Members of the Oakland University President's Club*

Our very special appreciation to the following donors whose contributions to Meadow Brook indicate they have placed these cultural programs high among the many activities they support for the benefit of this community.

CHRYSLER CORPORATION  
 THE FESTIVAL WOMEN'S COMMITTEE  
 FORD MOTOR COMPANY FUND  
 GENERAL MOTORS CORPORATION

J.L. HUDSON COMPANY  
 THE ROCHESTER FESTIVAL CLUB  
 LULA C. WILSON TRUST FUND

*We regret the omission of those names received too late for publication.*

*The Meadow Brook Music Festival and Meadow Brook Theatre are joined administratively and the Finance Committee conducts a joint campaign. While some contributions were specifically designated for the Theatre, they are included in this listing in order to acknowledge them at this time.*



# CONTRIBUTIONS TO THE MEADOW BROOK MUSIC FESTIVAL AND THEATRE

## SPONSORS

Ray Ablondi  
Active Tool & Mfg. Co., Inc.  
Advanced Technology & Testing  
Airola Sales, Inc.  
Alliance Steel Inc.  
Allied Products Corporation  
Anchor Swan, Div. of Harvard Industries  
Arnold Tool Engineering Co.  
Arvin North American Automotive  
ASC Incorporated  
Atlas Tool, Inc.  
Bennett Equipment Corporation  
Peter Blom Industrial Sales  
Robert Bosch  
Mr. and Mrs. James R. Brogan  
C F Air Freight  
Canadian General - Tower Limited  
Mr. and Mrs. Fred L. Carbonero  
Chivas Products Ltd.  
Cold Heading Company  
Combine Tool & Die Co.  
Mr. and Mrs. Edward P. Czapor  
D & K Switching, Inc.  
Dana Corp./Spicer Axle Division  
Gerald L. Decker  
Mr. and Mrs. Robert J. Eaton  
Betty B. and John R. Edman  
Edwards Oil Service, Inc.  
Fabricated Steel Products/Div. of Indal Limited  
Feblo Incorporated  
Fischbach/Natkin, Inc.  
Flex-Cable/Kirkhof  
Mr. G. Glenn Gardner  
Gathen Industries, Inc.  
General Safety Corp.  
Ghafari Associates, Inc.  
Mr. and Mrs. Joseph R. Glesta  
Mr. and Mrs. C. F. Goettelmann  
C. L. Gransden & Company  
Grant Industries, Inc.  
Mr. and Mrs. J. O. Grettenberger  
John D. Hastings  
Mr. and Mrs. Richard Headlee  
Hofley Manufacturing Company  
ITT Thompson Metals  
Jacobs Industries, Inc.  
Mr. and Mrs. Ernest Jones  
Kaul Glove & Manufacturing Co.  
Mr. and Mrs. Donald F. Kopka  
L O F Plastics  
Lapeer Metal Products Co.  
Mr. and Mrs. Louis E. Lataif  
Lear Siegler, Inc./General Seating Div.  
Mr. and Mrs. Richard E. Loeding  
M & G Convoy Inc.  
Madison Electric Company  
Marathon Linen Service, Inc.  
Mark One Corporation

Mr. and Mrs. F. James McDonald  
Milco Manufacturing Company  
Models & Tools, Inc.  
Modu-tronics  
Robert F. Murphy  
National Industries  
Joan and John Nelson  
O E S Associates  
C. S. Ohm Manufacturing  
Mr. and Mrs. Fred A. Otto  
Potomac Steel Corporation  
PPG Hughes Products  
Price Waterhouse  
Dr. and Mrs. Venkat N. Reddy  
Mr. and Mrs. Lloyd E. Reuss  
Verena and John Rhame  
Ring Screw Works  
Thomas P. Robb  
Mr. and Mrs. Arthur Saltzman  
Selective Copy Machines, Inc.  
The Standard Products Company  
Howard Ternes Packaging Co.  
Thyssen Steel Detroit Co.  
Triangle Industrial Sales  
Trim Trends, Inc.  
Troy Design Services Company  
Troy Mills, Inc.  
Mr. and Mrs. G. C. Valade  
Valeo Auto Industries, Inc.  
Joanne R. & John F. Werner  
Whittar Steel Strip  
Wolf Sanitary Wiping Cloth Co., Inc.

## CENTURY CLUB

Mr. and Mrs. Frank H. Abar Jr.  
N. J. Adamson  
Mr. and Mrs. Blair D. Algie  
Mr. and Mrs. Charles A. Amann  
Robert S. Anderson  
Mr. and Mrs. Richard B. Armstrong  
Mr. and Mrs. W. J. Atkinson  
Mr. and Mrs. Donald J. Atwood  
James K. Bakken  
Dorcy and Baron Bates  
Mr. and Mrs. E. T. Baumgartner  
Ronald E. Beck  
Mr. and Mrs. James E. Beers  
Bennett E. Bidwell  
Dr. and Mrs. Duane L. Block  
Mr. and Mrs. Thomas A. Boltik  
Mr. and Mrs. Walter E. Bowles, Jr.  
Frank D. Brennan  
Mr. and Mrs. Thomas K. Brichford  
Isabel W. Buckner  
Mr. and Mrs. John H. Burdakin  
Mr. George F. Butts  
Mr. William N. Campbell  
Thomas L. Campbell

Mr. and Mrs. John J. Casey  
Mr. James M. Chandler  
Patricia and Robert Check  
Marjorie and Norman Christman  
Mr. Frank M. Clark  
CMI-International Inc.  
Conrad T. Coen  
P. J. Coletta  
Mr. Jack L. Comp  
Mr. and Mrs. Richard E. Conn  
Mr. and Mrs. W. Crotty, Jr.  
James J. Cuccello  
Mr. and Mrs. Peter A. Cullman  
James A. Danforth  
Robert A. Dearth  
Mr. and Mrs. John V. Deaver  
Mr. and Mrs. Thomas E. DeGrazia  
Mr. Victor V. Ditommaso  
Mr. and Mrs. Richard T. Donaldson  
Peter Dryer  
John T. Eby  
Mr. and Mrs. Aris D. Efthimides  
Mr. and Mrs. N. F. Ehlers  
T. J. Elsholz  
Leila and Martin Evelev  
Richard P. Fite  
Mr. and Mrs. James B. Fitzpatrick  
Mr. and Mrs. Eugene Flegm  
Mr. and Mrs. L. M. Forbes  
E. W. Fraher  
William R. Fretz  
Mr. and Mrs. Robert E. Garlo  
Michael D. Gauvin  
Mr. and Mrs. Charles Gehringer  
R. K. Gibson  
Mr. Allan D. Gilmour  
L. David Gorman  
Mr. Donald N. Gretel  
Ruth and Phil Guarascio  
Mr. and Mrs. Charles G. Gunderson  
Mr. and Mrs. E. Wray Haack  
L. Lindsey Halstead  
Edward T. Hamilton  
Robert E. Hatfield  
Richard Haupt  
Mr. and Mrs. Ira G. Hawk  
Dr. William C. Heitsch  
Frederick Z. Herr  
Jeanne Hildebrandt  
Mr. and Mrs. W. D. Hirschfield  
Mr. and Mrs. James C. Hitchcock  
Elizabeth and Dennis Hoadley  
Mr. Kenneth D. Holloway  
Richard P. Holmes  
Ral Homovec  
Elaine and Richard Honecker  
Mr. and Mrs. Robert Howald Jr.  
Mr. and Mrs. Ross G. Humphries  
Wendell A. Hurd

*We regret the omission of those names received too late for publication.*



---

## CONTRIBUTIONS TO THE MEADOW BROOK MUSIC FESTIVAL AND THEATRE

---

### CENTURY CLUB (Cont'd)

Kathleen and Robert Hurliman  
 Stuart C. Hyke  
 Mr. and Mrs. Graham J. B. Jackson  
 Len P. Johnson  
 Martin S. Kilsdonk  
 Mr. and Mrs. Paul J. King  
 Anton Klaric  
 R. W. Knipper  
 Mr. and Mrs. Joe Kordick  
 Edward J. Kowaleski  
 Mr. and Mrs. Charles A. Krauss, Jr.  
 Mr. and Mrs. D. A. Krencicki  
 Mr. and Mrs. John Kutina  
 Clinton D. Lauer  
 Melvin D. Lee  
 Mr. and Mrs. David R. Levering  
 Mr. and Mrs. Edward T. Mabley  
 Magee Carpet Co.  
 Mr. and Mrs. Alex C. Mair  
 Lee Manduzzi  
 Mr. and Mrs. John A. Manoogian  
 R. A. Marshall  
 Robert J. McCabe  
 R. E. McCallum  
 Sandra and Ned McClurg  
 D. D. McDavid  
 Mr. and Mrs. C. G. Meyer  
 R. S. Miller, Jr.  
 Lee R. Miskowski  
 David and Janet Monroe  
 Mr. and Mrs. W. Edwin Mosher, Jr.  
 Mr. and Mrs. K. W. Myers  
 Mr. and Mrs. R. K. Nolan  
 Mr. and Mrs. Henry R. Nolte, Jr.  
 Mr. and Mrs. Henry Noonan  
 Mr. and Mrs. John R. O'Brien  
 John L. O'Connor

Paul R. O'Hara  
 J. A. Oldfield  
 Mr. and Mrs. R. J. Papscoe  
 Mr. and Mrs. G. Thomas Patton  
 Mr. and Mrs. Carl Pearson  
 Elaine and Ed Perkins  
 Robert L. Plummer  
 Mr. and Mrs. Harold A. Poling  
 A. R. Pollack  
 Rodney R. Prim  
 Susan and Lyle Raines  
 Nonna and Don Rassier  
 Mr. and Mrs. I. B. Reiff  
 Robert L. Rewey  
 Mr. and Mrs. Mark A. Richards  
 Mr. and Mrs. Edwin J. Riley  
 John W. Risk  
 Mr. and Mrs. David A. Robison  
 James A. Rousseau  
 Mr. and Mrs. C. F. Rush  
 Richard E. Rytel  
 Mr. and Mrs. N. V. Scheele  
 Ralph L. Schmidt  
 Charles H. Schroeder  
 Mr. and Mrs. Ernest J. Schwartz  
 Mr. and Mrs. Donald J. Scott  
 Mr. and Mrs. John F. Sellinger  
 Mr. and Mrs. Robert G. Shannon  
 Mr. and Mrs. Stephan Sharf  
 Mr. and Mrs. Michael A. Sheehan  
 Mr. and Mrs. D. F. Smith  
 Mr. and Mrs. F. Alan Smith  
 Mr. and Mrs. Robert F. Smith  
 J. David Smyth  
 James A. Sorensen  
 Robert Sparks  
 Mr. and Mrs. Thomas T. Stallkamp

Mr. C. J. Steffen  
 Earle H. Stepp  
 Dee and Ron Stewart  
 David C. Stinson  
 Dr. and Mrs. Charles D. Stocking  
 Lee and Roger J. Storves  
 Mr. and Mrs. P. J. Sullivan  
 S. J. Surma  
 Dean Swartzwelter  
 Mr. and Mrs. William E. Tate  
 Ralph and Maxine Tennant  
 William and Mary Lee Tennant  
 Nan and James Toger  
 Mr. and Mrs. James L. Tolley  
 Mr. and Mrs. Peter Tottis  
 David C. Travis  
 Mr. and Mrs. George R. Troost  
 Richard E. Van House  
 John B. Vanderzee  
 Mr. and Mrs. R. Waelchli  
 Thomas J. Wagner  
 Mr. and Mrs. Harvey R. Warburton  
 Mr. and Mrs. John H. Weaver  
 Mr. and Mrs. Martin E. Welch, III  
 Mary Ann Welden  
 Mr. and Mrs. Robert Widmer  
 Janice and Dennis Wilkie  
 Mr. and Mrs. J. Michael Williams  
 Parker E. Williams  
 Dottie and Jack Withrow  
 Mr. and Mrs. Roy Wolf  
 Mr. and Mrs. Lauren Wolf  
 Mr. and Mrs. Henry Wolpert  
 Mr. and Mrs. J. B. York  
 R. M. Yost  
 Mr. and Mrs. Stephen E. Zimmer

*We regret the omission of those names received too late for publication.*



# CONTRIBUTIONS TO THE MEADOW BROOK MUSIC FESTIVAL AND THEATRE

## CONTRIBUTORS

A & J Precision Tool Co.  
Acco Babcock Inc.  
Richard E. Acosta  
Mr. and Mrs. D. C. Ahms  
Airola Sales, Inc.  
James M. Aitken  
Albert Kahn Associates, Inc.  
Alfran Incorporated  
Allen Automated Systems Company  
Allen Electric Supply Company  
Allen Industries, Inc.  
American Fibril, Inc.  
American Steel Corporation  
American Transport Leasing, Inc.  
Anchor Fasteners Sales Company  
Apex Castings, Inc.  
Armstrong & Meissner, Inc.  
Arrowsmith Tool & Die, Inc.  
Auto Metal Craft, Inc.  
Automotive Moulding Company  
Avondale, Luria Brothers Division  
B & W Interstate  
B and M Industries, Inc.  
P. N. Bakalis  
Baldwin Steel Co.  
Barfield Manufacturing Co.  
Mr. and Mrs. G. S. Barquist  
BarSteel  
Bay State Abrasives Div., Dresser Industries, Inc.  
Beaver Industries, Inc.  
Mr. and Mrs. L. D. Bence  
Mr. and Mrs. Alan C. Benden  
Bespro Pattern & Plastic Co., Inc.  
Mr. and Mrs. John P. Bieda  
Charles Bigelow Assoc.  
Robert J. Binder  
Art Blair  
Ted Bohlen  
Richard B. Boose  
Mr. William M. Borowy  
Mrs. R. F. Borsos  
Joseph N. Bosse  
Mr. and Mrs. Bliss Bowman  
Ruth Bozian  
Bra-Con Industries, Inc.  
Chas J. Brady  
F. E. Brazill  
Brencl Contractors, Inc.  
Brillcast Inc.  
Brown Express, Inc.  
Mr. and Mrs. Bryce N. Brown  
John T. Brown  
Dorothea L. and William E. Brune  
Buckley Manufacturing Company  
Mr. Gilbert P. Burford  
James A. Burk  
Leo Burnett Company of Michigan, Inc.  
Burns Cold Forge

Mr. and Mrs. G. S. Burr  
David E. Buskirk  
Byrne Plywood Co.  
Caine Steel Company of Michigan, Inc.  
Mr. and Mrs. John T. Caldwell  
California Industrial Products, Inc.  
Camcar Div. Textron  
Charles M. Campbell Company  
Mr. and Mrs. Dennis M. Cantwell  
Cap Collet & Tool Co., Inc.  
Capitol Transportation Co., Inc.  
Capitol Trucking Inc.  
Grant M. Carrithers  
Carron & Company  
Mr. and Mrs. Felix T. Casillas  
Cass Strapping Corporation  
L. J. Cattaneo  
Walter Cavanagh  
Centerline Tool & Die Co.  
Central Maintenance Service, Inc.  
Central Steel & Wire Co.  
Certainteed Corp.  
Champion Engineering Products, Inc.  
Mr. Willard D. Check  
Mr. and Mrs. L. M. Chicoine  
Howard S. Christie  
M. P. Ciccone  
E. Stanton Clark  
Classic Container Corporation  
Clearr Industries, Inc.  
W. R. Clifton  
Richard E. Clingenpeel  
Clipper Diamond Tool Co.  
Mr. Joseph F. Collins  
Colman Machining Service, Inc.  
The Columbus Auto Parts Company  
Commercial Carriers, Inc.  
Commodore Cartage Company  
Consolidated Freightways  
Doris and George Cook  
Corrigan Moving Systems  
Craftmation, Inc.  
Creative Information Services  
Crotty Corporation  
C. M. Crowl  
Mr. and Mrs. J. M. Cudlip  
Kenneth W. Cunningham, Jr.  
Currie Associates, Inc.  
David N. Cushing  
Danroy Boring  
Thomas F. Dansbury & Associates, Inc.  
Darnell & Diebolt Co., Inc.  
Dataforms, Inc.  
Davis Tool & Engineering  
Carlisle R. Davis  
Dearborn Fabricating & Engineering Co.  
Delbar Products, Inc.  
DeMaria Building Company, Inc.  
Mr. and Mrs. William DeRoos

Detroit Body Products  
Detroit Center Tool, Inc.  
Detroit Strip Division, Cyclops Corp.  
Detroit-Pittsburgh Motor Freight, Inc.  
Philip J. Devereaux  
Dirksen Screw Products Co.  
Diversified Imaging Supply Co., Inc.  
Mr. and Mrs. R. P. Dixon  
Dominion Chain Company  
Dominion Tool & Die Co., Inc.  
Richard M. Donnelly  
John J. Doyle  
Mr. and Mrs. Gary Paul Drew  
DST Industries, Inc.  
L. R. DuRoss  
Mr. and Mrs. Charles J. Dussey  
P. J. Early  
C. J. Edwards Company, Inc.  
Donald G. Ehr  
Elite Metal Products, Inc.  
Mr. and Mrs. Gerald Elson  
Empire Steel Products Company  
Eppert Oil Company  
Mr. and Mrs. Herbert Epstein  
Erie Engineering Company  
Christine and Douglas Evans  
Mr. and Mrs. Lynn R. Evans  
Evergreen Design Inc.  
Mr. and Mrs. Dale R. Ewart  
Exhibit Productions Inc.  
Mr. and Mrs. Hazem Ezzat  
Fabricon Products, Inc.  
J. F. Fanuka  
Fasco Controls Corp.  
FCS Industries, Inc.  
Mr. and Mrs. George Fenner  
Ronald J. Ferrari  
Fiddler Associates, Inc.  
Filtru-Systems Company  
Findlay Industries, Inc.  
Fischbach/Natkin, Inc.  
Fitzsimons Manufacturing Co.  
A. R. Fjeldsted  
Mr. and Mrs. Francis C. Fleck  
Mr. and Mrs. Edward J. Fleming  
Freedland Industries Corp.  
FRG Industries, Inc.  
Robert M. Friedlander  
Dr. Roger D. Fruechte  
Robert A. Fucinari  
Gage Products Co.  
Gallant Industrial Services, Inc.  
Mr. and Mrs. Jayant K. Ganatra  
Denise C. Garavaglia  
Gas Spring Company  
Gaylord Container Division/Crown Zellerbach Corp.  
General Electric  
General Tape & Supply Inc.

*We regret the omission of those names received too late for publication.*



# CONTRIBUTIONS TO THE MEADOW BROOK MUSIC FESTIVAL AND THEATRE

## CONTRIBUTORS (Cont'd)

Stanley Genslak  
The Gerstenslager Company  
Philip E. Gerwert  
Mr. and Mrs. Frank H. Gibbs  
Star and Peter Gilezan  
Gilreath Manufacturing Inc.  
Robert E. Glass  
Mr. Michael M. Glusac  
Harvey A. Gordon  
Joseph Gormley  
C. W. Graning  
Serge Gratch  
Grossel Tool Co.  
L. L. Grubb, Jr.  
GTE Products Corporation  
Lynnette E. Gunn  
Ronald A. Gustke  
Mr. James A. Haas  
Gerry K. Haas  
Mr. and Mrs. Douglas J. Hall  
Mr. and Mrs. Paul F. Hammett  
George Hamzik  
Robert F. Hanba  
Charles B. Hanssen  
Mr. and Mrs. Jack R. Harned  
Bruce & Gwen Harrington  
Hawthorne Metal Products Company  
John L. Hazen  
Maureen S. Heaphy  
Mr. and Mrs. John P. Hegener  
Terry M. Heim  
Richard P. Helwig  
T. H. & M. G. Hengesbaugh  
James P. Henry  
Hercules Welding Products Co.  
Mr. and Mrs. Dale Hermler  
Tim A. Hernden  
Charles R. Hicks  
John J. Higgins  
Mr. and Mrs. David H. Hill  
Hillsdale Tool  
Stan Hinkle  
Hirzel-Jones Associates  
Elaine Hoagland  
LeRoy J. Hoffert  
Carola Hoffmann  
Ted Hoffmann  
Holley Automotive Division  
Elaine and Gordon Horsburgh  
Hubbell, Roth & Clark, Inc.  
Norman A. Hunstad  
Huron Valley Steel Corporation  
James B. Hutchinson  
R. C. Hutchison  
IEM Ltd.  
Mr. Donald P. Iller  
Mr. and Mrs. R. J. Imrick  
Inductoheat, Inc.  
Industrial Woodfab & Packaging Co.

Izumi Corporation Industries Inc.  
Mr. and Mrs. Harold C. L. Jackson, Jr.  
JCI-Ferro Automotive Division  
Sidney D. Jeffe  
Johnson Die & Engineering Co.  
A. L. Johnson  
Mr. Thomas C. Johnston  
Jonesville Products, Inc.  
Juklin Industries, Inc.  
Mr. and Mrs. Gerald E. Kahler  
Kalamazoo Spring Company  
Diane L. Kaye  
O. Keller Tool Engineering Company  
Sharon and Joe Kelly  
Kenwal Products  
Michael W. Kerby  
Mrs. Donna King  
John P. King  
W. P. King  
Kingsbury Machine Tool Corp.  
Donald W. Kish  
Klarich Associates, Inc.  
Larry E. Knox  
Donald L. Knudsen  
John F. Kolar Associates  
Bernard A. Konke  
Joyce Kornbluh and Steven Novinson  
R. Alexander Krenz  
Kripke-Tushman Industries Inc.  
KSR Industrial Corporation  
Mr. and Mrs. James J. Kubic  
Mr. and Mrs. Arlo M. Kunkel  
S. S. Labana  
Jon W. Ladd  
Joseph A. LaManna  
W. L. Lamott  
Jack W. Landon  
L. Langlois  
Annie and Paul Larson  
Lattimore & Tessmer Inc.  
Leckie & Associates, Inc.  
Mr. and Mrs. Richard D. Lee  
Mr. and Mrs. Richard Leonard  
D. J. Lewsley  
Libbey-Owens-Ford Co.  
Albert P. Loening  
Logghe Stamping Company  
Elizabeth Long  
A. T. Loria  
Richard F. Lucas  
Luk Incorporated  
Mr. and Mrs. R. Luscomb  
James J. Lyijynen  
Mary K. and Donald C. MacDonald  
Mack Pattern Works, Inc.  
Madias Brothers, Inc.  
Mr. and Mrs. Dennis Madigan  
William P. Madigan  
Mr. and Mrs. R. A. Majeske

Mr. and Mrs. Thomas G. Manoff  
Manor Industries, Inc.  
Maremont OEM Sales  
Mr. and Mrs. R. J. Marshall  
Mr. William G. Martin  
Marubeni America Corp.  
Marx Manufacturing Corporation  
C. H. Masland & Sons  
Mather Metals  
Mr. Richard J. Matton  
Gerald W. McArthur  
David N. McCammon  
Mr. and Mrs. John W. McCuiston  
W. C. McCurdy Company  
Mr. and Mrs. R. E. McDonough  
McGean-Rohco, Inc.  
McIntosh Division - NI Industries  
Mr. and Mrs. A. C. McKeen  
Wm. J. McLaughlin  
Mr. and Mrs. Arch. McLelland  
J. Curtis Mellor, Jr.  
W. F. Mennick  
Mercury Paint Company  
Met-L-Aid, Inc.  
The Metalloy Corporation  
Mexican Industries in Michigan, Inc.  
Mezey-Purolit Agency, Inc.  
MFI, Inc.  
Michigan Mutual Insurance Co.  
Michigan Technical Services, Inc.  
Mr. Robert F. Miller  
George B. Millush  
Mitsui & Co. (U.S.A.), Inc. Detroit Office  
Molmec, Inc.  
John Morrison  
Yvonne Morrison  
Mortell Company  
William C. Mott  
MPD Welding, Inc.  
MTD Productions Inc.  
Mubea, Inc.  
Gladys and Carl Muhn  
Multifastener Corporation  
Emily and Thomas Murphy  
Mr. and Mrs. John J. Musselman  
Paul R. Mutt  
Arthur B. Myr Sheet Metal Industries  
National Rubber Co., Inc.  
National Steel  
Ronald Nay  
Mr. and Mrs. Arthur Nesse  
C. Neumann Associates, Inc.  
Mr. and Mrs. Jack H. Newcomb  
Henry A. Nickol  
Pat Nicosia  
Warren S. Norrid  
Northern Engraving Corporation  
James T. Northrup  
Mrs. Gail E. Nowak



# CONTRIBUTIONS TO THE MEADOW BROOK MUSIC FESTIVAL AND THEATRE

## CONTRIBUTORS (Cont'd)

Mr. and Mrs. J. Timothy O'Connor  
Donald and Sandra O'Mally  
Oakland Products  
Orsco Inc.  
Mr. and Mrs. Jerry A. Ouellette  
Oxford Speaker Company  
P.I.E. Nationwide  
Pak-Rite Industries, Inc.  
Palmer Moving & Storage Company  
Mr. and Mrs. R. H. Palmer  
Mr. and Mrs. E. T. Pappert  
Keith C. Parker  
Parker-Kalon  
Parts & Equipment Corporation  
Joseph A. Parus  
Peak Industries, Inc.  
Angelo Pellegata  
Harvey R. Peters  
Rodney D. Peters  
Russell R. Peters Co.  
Raymond A. Pfau  
Phomat Reprographics, Inc.  
Mr. and Mrs. J. William Pierce  
Pillsbury Chemical & Oil  
John P. Plant  
Plasta-Fiber Industries  
Plastomer Corporation  
Linda and Charles Platt  
L. R. Plummer  
Plymouth Stamping Company  
Joan and Darrah Porter  
Irvin E. Poston  
Barry D. Price  
Richard W. Prior  
Judy and Terry Pritchett  
Protective Treatments, Inc.  
Mr. and Mrs. George H. Pruette  
Quality Metalcraft, Inc.  
Brook and Jay Qualman  
Quasar Industries  
Mrs. William G. Quigley  
R & B Manufacturing  
Radel Leather Mfg. Co.  
Robert W. Ranka  
Rassini International, Inc.  
J. B. Rath Company, Inc.  
Rayl Industrial Supply Company  
R. C. Rayley  
RCO Engineering Inc.  
Mr. and Mrs. Paul B. Readett, Jr.  
Reiter Industries  
Charles T. Rice  
Richfield Iron Works, Inc.

Rima Manufacturing Company  
H. C. Rissel  
Mr. and Mrs. Hugo A. Ritzenthaler  
Riverhill Publications and Printing, Inc.  
Roberts Express  
Mr. and Mrs. Ross Roberts  
Mr. and Mrs. Steven R. Roberts  
Mr. M. D. Rosolowski  
Mr. and Mrs. R. Rossio  
Richard J. Rouillard  
Maria and Lee Runk  
Russell, Burdsall & Ward Corporation  
Laurence E. Rybacki  
Ryken Tube Manufacturing, Inc.  
S.W.E. Inc.  
Mr. and Mrs. H. G. Savoy  
Ro and Neil Schilke  
Don F. Schimmel  
Schlegel North American Automotive  
Operations  
Schwarb Foundry Inc.  
Seeburn Metal Products Ltd.  
Basil Senio  
L. V. Shagena Inc.  
Mr. and Mrs. James W. Shank  
Mr. and Mrs. Charles D. Simmons  
Michael G. Skupin  
Mr. and Mrs. Alvie L. Smith  
Mr. C. Edwin Smith  
Robert O. Somson  
Special Drill and Reamer  
Spicer Tool Company  
E. T. Sprock  
Anthony P. St. John  
Odette and Douglas Steiger  
G. S. Steinberg  
Roger P. Sterling  
Dr. Sheldon & Jessie Stern  
Colin Stewart  
Donald P. Stewart & Associates  
Mr. and Mrs. Edwin E. Stewart  
Mr. and Mrs. E. Stines  
Carol and R. Brooks Stover  
R. N. Stroud  
H. B. Stubbs Company  
Mr. and Mrs. J. W. Suhay  
Supreme Haulers, Inc.  
Sur-Flo Plastics & Eng., Inc.  
Sure Fit Metal Products, Inc.  
Warren J. Swan  
Mr. and Mrs. Ben Sweeney  
David W. Swietlik  
Mr. and Mrs. Len Swoyer

C. H. Symington & Co., Inc.  
J. C. Tatham  
Mr. Edgar L. Taylor  
Taylor & Gaskin, Inc.  
Teleflex, Inc.  
Patrick W. Telesco  
Momcilo Teodosic  
Robert S. Terrell  
Thiem Corporation  
Three Dimensional Engineering  
Townsend Division of Textron Inc.  
Trans-Overseas Corporation  
Transign, Inc.  
Trico Products Corporation  
TRW Vehicle Safety Systems Division  
U. S. Padding Corporation  
U.S. Truck Company Inc.  
James D. Unis  
Warren Division, USM Corporation  
Mr. and Mrs. Ernest O. Vahala  
Value Engineering Company  
Mr. and Mrs. J. J. Van Giesen  
Donald K. Van Zile  
Mr. and Mrs. Robert Vogeley  
Voplex Corporation  
Mr. and Mrs. Leo F. Walsh  
Mr. and Mrs. Harold R. Walton  
Mr. and Mrs. Alfred S. Warren, Jr.  
Jackie Washburn  
James T. Watson  
Jervis B. Webb Company  
Welding Metals Inc.  
Weldmation, Inc.  
Wellington Mfg., Inc.  
Westvaco - Container Division  
Mr. and Mrs. Glenn E. White  
Mr. and Mrs. Robert C. White  
Charles W. Wiegel  
L. H. Wilking  
Mr. and Mrs. Frank Willenborg  
Ginny and Paul Williams  
Mr. and Mrs. Kenneth G. Wingeier  
H. K. Witzke  
Mr. and Mrs. Conrad Wojciechowski  
Wolf Detroit Envelope Company  
Mr. and Mrs. Leo E. Wymer  
X-Cel Industries, Inc.  
Xerox Corp.  
Yale Rubber Manufacturing Co.  
Russell R. Young  
Mr. and Mrs. Peter M. Zubrin  
Frederick W. Zuckerman

*We regret the omission of those names received too late for publication.*



# Friends of the Meadow Brook Music Festival

## Opus

Mr. & Mrs. Milton J. Miller  
Mr. & Mrs. Irving Rose  
Dr. & Mrs. Fredrick J. Stare  
Mr. & Mrs. Leroy Taylor

## Sound Supporter

William A. Atkins  
Gilco, Inc.  
Don & Dolores Hudler  
Henry C. Kinzey  
LOF Plastics, Inc.  
Jack & Aviva Robinson  
David G. Stevens

## Benefactor

William N. & Barbara F. Anderson  
Mr. & Mrs. Charles H. Ashton  
Dr. & Mrs. Ralph E. Bauer  
Dr. & Mrs. Joseph Beninson  
Carl & Jean Bihlmeyer  
Dr. Richard J. & Susan Bingham  
Penny & Harold Blumenstein  
Mr. & Mrs. Lawrence B. Boensch  
William R. Boike  
Mr. & Mrs. W.R. Brink  
Mr. & Mrs. Robert Burland  
Mr. & Mrs. A. William Butterfield  
Clarence G. Catallo  
Charles H. Clark  
Mr. & Mrs. Robert T. Collins  
Charles & Vivienne Collinson  
Mr. & Mrs. Rodkey Craighead  
Alma & Pete Dyer  
Mrs. Saul H. Dunitz  
Barbara A. Durling  
Edrich Products, Inc.  
Murray & Alice Ehrnpreis  
Robert & Adrienne Feldstein  
Mr. & Mrs. Francis C. Fleck  
Mr. & Mrs. Richard Fowler  
Mr. & Mrs. John J. Gaves  
Dr. Myron Ginsberg  
Phyllis & George Googasian  
Mr. & Mrs. K.P. Haller  
Dr. & Mrs. L. E. Heath  
Bill & Sue Holman  
Miss Sarah Katherine Hoyt  
Frederick G.L. Huetwell  
Hydra-Zorb Company  
Mr. & Mrs. Donald L. Jacques  
Mr. & Mrs. Richard Jessup  
Mr. & Mrs. James A. Johnston  
Mr. & Mrs. Jacob Kellman  
Ron & Doe Kennis  
Christopher & Denise Kozakiewicz

Mr. & Mrs. David G. Kurzman  
Mr. & Mrs. Michael A. Leonard  
Mr. & Mrs. Seymour J. Levine  
Mr. & Mrs. C.R. Lindell  
Burce B. MacDougall  
Joan & Doug Mann  
Robert S. Martin  
McMullen Tool Supply Company  
Mr. & Mrs. E. Alan Moorhouse  
Ken & Doris Morris  
Mr. & Mrs. R. James Paul  
Donald E. Petersen  
Douglas Alden Peterson  
Dr. & Mrs. L.J. Peterson  
Peter J. Pirsch  
Elaine & Robert Phillips  
Robert L. Pobur  
William R. Price  
Dorinne Redmon  
Nancy J. Rhodes Remick  
Mr. & Mrs. John Rex  
Mr. & Mrs. S. Dennis Rogers  
Mr. & Mrs. Richard F. Rush  
Alvin & Sherry Russman  
R.J. Sawicki  
Allan B. Schmier  
Eva Schulte  
Mr. & Mrs. Donald E. Schwendemann  
Mr. & Mrs. Kenneth N. Scott  
Mr. & Mrs. David S. Sharpe  
Dr. & Mrs. Sam Shell  
Gregory Smith  
Herbert Sott  
Dr. & Mrs. Donald E. Stroud  
Joyce C. Swanson  
James H. Tarter  
Mr. & Mrs. G.R. Troost  
Tuesday Musicales of Detroit  
Shirley & Howard Warye  
Mr. & Mrs. Harold N. Weinert  
Kathryn M. Weir  
David P. Wood  
Mrs. Minoru Yamasaki

## Patron

Mr. Eugene J. Arnfeld  
Russell & Sandra Ayers  
Mr. & Mrs. John E. Barnes Jr.  
Mr. & Mrs. Allan L. Barrett  
Mr. & Mrs. Frederick P. Bens  
Dr. & Mrs. John R. Birmingham  
John E. Bloom  
Albert Bonucchi  
C. Jane Book  
Arthur W. Bryant

Mr. & Mrs. James W. Cahill  
Mr. & Mrs. John J. Casey  
Dr. & Mrs. David E. Congdon  
Jim Curtis  
Charles & Gail Dohring  
Mr. & Mrs. Robert A. Emmett  
Erb Lumber Company  
Mr. & Mrs. Jared W. Finney  
Bernie & Judy Gerke  
Mr. & Mrs. A. Giasone  
Geoffrey & Alice Gottlieb  
Mr. & Mrs. John Graham  
Mr. & Mrs. Arthur R. Grix  
James E. Haas  
James & Joyce Hamburg  
Mr. & Mrs. Jack R. Harned  
Robert L. Herstein  
Richard P. Hervey  
Lauren G. Itami  
Edmund G. Jacques  
Charles & Dianne Jaskolski  
Jeffrey M. Jepko  
John F. Jovanovich, M.D.  
Dr. & Mrs. Stuart Katz  
Mrs. Fred A. Knorr  
Marvin L. Kornhauser  
Kenneth S. Kowalski  
Mr. & Mrs. Edward H. Lerchen  
Richard Lobenthal & Dr. Judith Kovach  
Elizabeth A. Long  
J. Mandrup-Poulsen  
Mr. & Mrs. Ted Marcon  
Mr. & Mrs. Philip D. Marriner  
Janet A. McCall  
Mr. & Mrs. Ben Miller  
Mr. & Mrs. Edward W. Miller  
Robert F. Miller  
Mr. & Mrs. Freeman Monson  
Barbara Jean Moss  
Penfield Mower  
Sally & Harry Nosanchuk  
Calvin W. Odom  
Mr. & Mrs. Bernard Robertson  
Felix F. Rosenwach, M.D.  
R.R. Rothschild  
Helen & Gerald Rowin  
Stuart Sakwa  
Mr. & Mrs. Robert Saroli  
Sell Ticket Service  
Mr. & Mrs. Thomas P. Scholler  
Mr. & Mrs. Lawrence Shalit  
Brian G. Shannon  
Mr. & Mrs. Roger Sharpe

Mr. & Mrs. John D. Sills  
Mona Spezzano  
S. H. Spindler  
Edward R. Stein  
Mr. & Mrs. Gene Stohler  
Ellen M. Strachan  
Mr. & Mrs. Lynn Troxel  
Robert L. Udebrock  
Milford & Barbara Wenokur  
Dr. & Mrs. William J. Westcott  
Mrs. G. Russell Widger, Sr.  
Monte R. Wilson  
Dr. & Mrs. Robert Youngberg

## Friends

Dr. & Mrs. William C. Albert  
Harry & Ann Alford  
Terrence S. Althouse  
Martin Amberg  
N. Arlene Andersen  
Helen A. Andrews  
Mrs. Sylvia W. Baer  
Mr. & Mrs. Neil E. Baerman  
Sam & Anita L. Barnes  
Mrs. Earl Barth  
Mr. & Mrs. Robert Barson  
Donald G. Beattie  
Mr. & Mrs. Frederick P. Bens  
Mr. & Mrs. Ernest E. Beren  
Mr. & Mrs. A.D. Blatnikoff  
Ruth E. Bliefeld  
Bette F. Bogue  
Walter & Evette Borchich  
Nadia Boreiko  
Eloise Y. Brennan  
William C. & Evonne Brimmer  
Claudia Burgess  
Mr. & Mrs. Arthur G. Burgott  
Mr. & Mrs. Paul Dietrich  
Mr. & Mrs. Terrence Carter  
Sandra K. Case  
Miriam Ciesla  
Winnifred I. Clark  
Mr. & Mrs. Michael Clever  
David G. Collins  
Ken Collinson  
Mr. & Mrs. Wayne D. Conner II  
Mrs. George A. Cook  
David & Suzanne Coosaia  
George T. Cori  
Dr. & Mrs. Ralph J. Coskey  
Mrs. Mildred I. Cprek  
Dr. & Mrs. Orlo L. Crissey  
Mrs. Ronald Cruickshank  
Mr. & Mrs. Robert L. Crump



# Friends of the Meadow Brook Music Festival

- |                                   |                                    |                                 |                                  |
|-----------------------------------|------------------------------------|---------------------------------|----------------------------------|
| John Czechowski                   | Doris M. Hayward                   | Margaret E. McCarthy            | Leslie Schey                     |
| Mr. & Mrs. David W. Daniels       | Mr. & Mrs. Henry Hockeimer         | Mary Gale McPharlin             | V.L. Schmidt                     |
| Jan N. Darga, CPA                 | Bruce & Sharon Hoilman             | Julius S. Megyesi               | Stan & Dorothy Seger             |
| Ms. Ernestine Davis-Cox           | Mr. & Mrs. Thomas Hopkins          | Dr. & Mrs. David B. Meltzer     | Louis C. Seno Jr.                |
| Bonnie A. Dayton                  | Marilyn & William Hopping          | Mr. & Mrs. Nicholas Mendes      | Mr. & Mrs. M.D. Serwin           |
| Milton & Nancy Desgrandchamp      | Erich & Ursula Huether             | Paul E. Milgrim                 | Dorothy Selik                    |
| Susan M. DiCosmo                  | Sheryl Hugger                      | Dr. Herbert & Susan Miller      | Milton Shaw                      |
| Mr. & Mrs. Paul Dietrich          | John T. Humphries                  | Mr. & Mrs. L.G. Miller          | Dan C. Shoff                     |
| William H. Donaldson              | Joel Ittigson                      | Mr. & Mrs. W. Bede Mitchell     | Dr. & Mrs. Sheldon N. Siegel     |
| Dr. & Mrs. Stanley Dorfman        | Miriam & Robert Iwrey              | Edward & Jean Monaghan          | Mr. & Mrs. Frederick Simon       |
| Mr. & Mrs. Frank Dulin            | Dr. & Mrs. John A. Jennings        | Mr. & Mrs. H.B. Morgenstein     | Samuel L. Smiley                 |
| Mr. & Mrs. Richard Elwood         | Janet Joyce                        | W. F. Mullaly                   | Barbara & Dean Smith             |
| Bennett & Sylvia Engelman         | Mary C. Juras                      | James & Dolores Mulrenin        | Rene Wm. Sopher                  |
| Dr. & Mrs. Riad Farah             | Barbara B. Kabcenell               | Mr. & Mrs. Thomas F. Neu        | Jim & Mary Stevenson             |
| David A. Finn                     | Mr. & Mrs. Terry Kanary            | Charles R. Neuberg              | Lawrence H. Sullivan             |
| Mary E. Flecksteiner              | Sidney J. Karbel                   | Robert & Gretchen Neumann       | Mr. & Mrs. C.R. Sutherland       |
| Mr. & Mrs. Eugene Flegm           | Norbert & Carole Keller            | Mr. & Mrs. S. Sidney Newhouse   | Robert & Mary Margaret Sweeten   |
| Dr. Mark E. Frenchi               | Jo Ann Kendall                     | W.H. Nikkel                     | Dulcy & Allan Swidler            |
| Jack Gallagher                    | Earl Kendler                       | Patricia O'Brien                | Christopher Szeft                |
| Henry & Helen Gaston              | Cheryl & Joe Kennedy               | Corrine Opitck                  | Elizabeth A. Thomas              |
| Mr. & Mrs. John Gavigan           | Mr. & Mrs. Edward Kersch           | Mr. & Mrs. Ralph A. Orlandi     | Nicholas & Suzanne Trush         |
| Dr. & Mrs. Ronald D. Geb          | Carol Kiiken                       | Mr. & Mrs. W.A. Pagen           | Mrs. Dorothy Vanderlist          |
| A.R. Giasson                      | Karen King                         | Lawrence & Denise Palka         | Stanley L. Van Tiem              |
| Maureen T. Given                  | Mr. & Mrs. Daniel J. Kingsbury     | Edgar & Ruth Parks              | Dave Vettese                     |
| Kenneth & Betsy Gold              | Bob Kintzer                        | Mr. & Mrs. Charles Perlman      | Mr. & Mrs. Philip D. Vincenzetti |
| Walter E. Gorican                 | Mr. & Mrs. James Kohner            | Paul R. Phelps                  | Mary Frances Von Koss            |
| G.E. Gormly                       | Stephanie Kown                     | Mr. & Mrs. Robert L. Plaunt     | Mrs. William Walters             |
| Kathie Granowicz                  | Dr. & Mrs. Jerome W. Krause        | John & D'Anna Potter            | Tom & Mary Jo Walworth           |
| Dr. & Mrs. Frank J. Greene        | Dr. Max & Ivah Kukler              | Peggy M. Rastenis               | Malca & Norman Wechsler          |
| Dr. & Mrs. John N. Grekin         | Ms. Dorothy Kurrie                 | Randall Reher, M.D.             | Mr. & Mrs. Leonard H. Weiner     |
| Mr. & Mrs. John H. Grier          | Mary Anne Lake                     | Mary Booth Rhodes               | Mr. & Mrs. Louis L. Weinstein    |
| Thomas & Jean Griffith            | Marvin Lawrence                    | Lyle Rice                       | Melrita Westerlund               |
| Mildred & Harold Grossman         | Calvin S. Lazar                    | Judith P. Robinson              | Lisa M. Wetzen                   |
| Hanley & Julie Gurwin             | Doris E. Lenz                      | Mary Ann Robinson               | Col. (Ret.) & Mrs. W. S. White   |
| Betty J. Haase                    | Dr. Leonard & Mrs. Lorraine Lerner | Gregory P. Rogier               | Ron & Carolyn Williams           |
| Dr. & Mrs. Berj H. & Alice B.     | Horst Lindner                      | Mr. & Mrs. Herman K. Rosenbusch | Patrick R. Willis, CPA           |
| Haidostian                        | Mr. & Mrs. Henry W. Lorish         | Ruth & Robert Rosenfeld         | Mrs. I. (Beryl) Winkelman        |
| G. Robert & Dorothy M. Harrington | Frank & Kathleen Lovett            | Abby & Larry Rosenthal          | Raymond E. Winn                  |
| Dr. & Mrs. Bernard J. Harris      | Jack E. Lyons                      | Connie & Gerald Ross            | Dr. & Mrs. Richard Wlodyga       |
| Dennis L. Hartford                | Gary Marchenia                     | Dr. & Mrs. Walter S. Rothwell   | Edward Woloszyk                  |
| Margaret E. Hartz                 | Edward & Lynn Marentette           | Frank Rugenstein                | Mr. & Mrs. Douglas R. Wozniak    |
| Mr. & Mrs. J. Hathaway            | Calvin Matle                       | Dr. & Mrs. Mitchell Salhaney    | Mr. & Mrs. Harvey C. Zorn III    |
| Mr. & Mrs. John C. Hawley         | Mr. & Mrs. R. A. Mazzara           | Mr. & Mrs. Timothy Schad        |                                  |

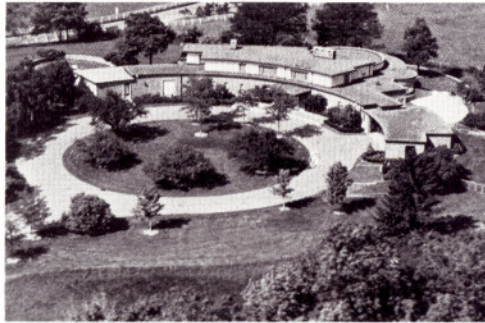


# SUNSET TERRACE REVISITED

Historic Interpretation by ASID

**June 13 to August 24, 1986**

11 a.m. to 4 p.m. Monday through Saturday  
1 to 5 p.m. Sunday



## IT'S NOW or NEVER

Make plans to see **Sunset Terrace Revisited**, the historic restoration offering a first and last opportunity for public touring of the unusual hilltop house overlooking Meadow Brook Hall and the Music Festival grounds.

Planned and executed by the Historic Preservation Committee (Michigan Chapter) of the **American Society of Interior Designers**, this one-time-only event presents a 1950s interpretation of the retirement home built for Oakland University benefactors Alfred and Matilda Dodge Wilson.

Sunset Terrace was designed by William Kapp of Smith, Hinchman & Grylls, who also designed Meadow Brook Hall, the Wilsons' principal residence. The house is primarily curvilinear and features a large round living room. Like

Frank Lloyd Wright prairie homes admired during that period, Sunset Terrace captures the outside view and brings the environment inside by its extensive use of glass. All furnishings and appointments provided by ASID are exemplary designs compatible with that period of architecture.

A unique experience for visitors, **Sunset Terrace Revisited** provides revenue for continuing operation and preservation of Sunset Terrace. After **Sunset Terrace Revisited** closes August 24, the home will be used as a small conference center annex to Meadow Brook Hall, as will the newly renovated Shotwell-Gustafson Pavilion, which now accommodates programs requiring large exhibition areas or seating capacity up to 1,000.

**\$5 general admission**

**\$4 group rate tickets**

**(313) 370-3140**

**Meadow Brook Hall**

**Oakland University Rochester, Michigan**



# 1986 INDEX TO ADVERTISERS

Twenty-third Annual Edition of the Meadow Brook Music Festival Program

Advertiser Name	Page Number
AAA	124
Ackroyd's Scottish Bakehouse	104
Adistra Corporation	106
Allied Automotive	8 & 9
Allied Metals Corporation	104
Alma Products	122
AMC Jeep	40 & 41
Autobahn Motors	80
N.W. Ayer, Inc.	53
Azar's Gallery of Oriental Rugs	80
B.B.D. & O.	128
Best Carpets & Area Rugs	47
Birmingham Chrysler-Plymouth	115
Bland Printing Company	86
Bloomfield Beach & Boat	86
Borg-Warner Corp.—Automotive	121
Bozell, Jacobs, Kenyon & Eckhardt	26
Max Brook, Inc.	92
The Budd Company	45
Leo Burnett Company	31
Burrough's Corporation	138
Campbell-Ewald Company	161
Chamber Music Society	104
Charley's Crab (C.A. Muer Corp.)	31
Christian Science Monitor	149
Chrysler Corporation "Lancer"	15
Chrysler Corporation "LeBaron"	33
Clarkston Cafe	118
Clutter Control	118
Crissman Cadillac, Inc.	16
Dana Corporation	111
D'Arcy Masius Benton & Bowles	67
Detroit Free Press	135
Detroit Science Center	109
Discover Magazine	51
Douglas Cleaners, Inc.	118
Douglas & Lomason Company	80
Dura Corporation	92
Eaton Corporation	94
Eaton Nursery, Ltd.	168
Executive Custom Shirtmakers, Inc.	118
The Fishman Group	94
Five Thousand at Town Center	158
Florist's Transworld Delivery Assn.	60
Ford Motor Company:	
Corporate Ad	140
Ford Division	inside front cover
Lincoln-Mercury Division	34
Parts and Service Division	74
Tractor Operations Division	82
Fortune	103
Frames & Framing	94

Advertiser Name	Page Number
Franklin Club Apartments	106
Gail & Rice Production	106
GenCorp	99
General Motors Corporation:	
AC Delco Division	139
Buick Motor Division	63
Cadillac Motor Division	48 & 49
Chevrolet Motor Division	back cover
Corporate Ad	27
GMAC	150
GM Parts Division	55
Oldsmobile Division	147
Pontiac Motor Division	155
Golden Pond	91
Goodyear Tire & Rubber Company	123
Greenstone's	91
Hammell Music	137
The Handleman Company	70
Hannett, Inc.—Realtors	162
Health Alliance Plan	145
Hubert Distributors	4
Hudson's	3
E.F. Hutton	115
Indian Head Industries, Inc.	32
International House of Pancakes	110
ITT Higbie Manufacturing Co.	69
Jacobsen's Flowers	162
Jewish Welfare League	130
Jones Floor Covering	91
Kelsey-Hayes	79
Kingsley Inn	110
P. Terry Knight & Associates	91
Kowalski Sausage Co., Inc.	94
Lamb Technicon Corporation	25
Fred Lavery Porsche Audi Co.	112
Lectron Products, Inc.	66
Liberty State Bank	1
Life Magazine	21
M & G Market Services, Inc.	88
Maccabees Mutual Life Insurance Co.	12
Manufacturer's Bank	52
Marty's Cookie Co. & Bakery	86
McCann-Erickson	65
McNichs	100
Michigan Design Center	80
John Mitchell Interiors	100
Jim Muir's Olds-GMC	109
National Geographic Magazine	39
Newsweek	54
Northfield Hilton	118
Oakland University:	
Center for the Arts	100

Advertiser Name	Page Number
Division of Continuing Education	114
O.U. Foundation "President's Club"	141
Meadow Brook Art Gallery	98
Meadow Brook Hall	164
General	42, 58, 64
Pasquale's	110
Patrick's Shalea Inn	106
People Magazine	165
Pettijon's	92
Leo D. Phillips and Company	117
Ben Pupko's House of Bedspreads	86
Quintessence	110
R.I.K.'s Total Cuisine Center	116
Reader's Digest	68
Rockwell International	50
Ross Roy Inc.	57
Russell Hardware	118
St. Joseph Mercy Hospital	24
Scallops of Rochester	2
Schmid Haus & Company	94
Jules R. Schubot Jewellers	142
Sheller-Globe Corporation	85
Somerset Mall	134
Speedy Tees, Inc.	86
Sports Illustrated	7
Stalker Gallery, Inc.	109
Sterling Savings & Loan	112
Stewart Fabrics, Inc.	110
The Stroh Brewery Company	129
TAS Graphics	163
TRW Automotive Worldwide	105
Tamaroff Buick, Inc.	110
The Taubman Companies	30
J. Walter Thompson USA	81
Time Incorporated	71
The Time Shop	162
Uniroyal	56
United Technologies Automotive	93
U. of M Musical Society	160
Vieille Provence -	
Jeff Fontana Designs, Inc.	92
Village Den Ltd.	104
Volkswagen of America	inside back cover
WJR	159
WQRS	136
David Wachler & Sons	166
Weiss Gallery/E.B.B. Corp.	86
Wells, Rich & Greene, Inc.	87
Wesch Cleaners	112
White Chapel Cemetery	153
Wild Wings	80