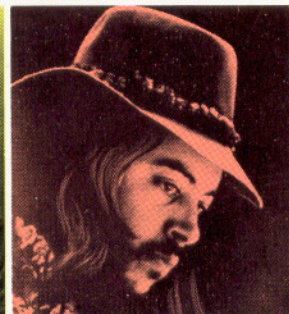
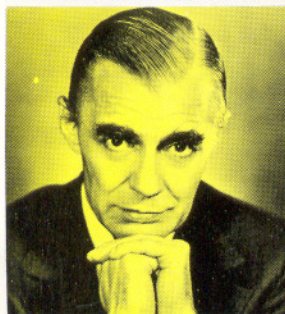


Archives
ML
38
.02
M47
1976
c.3



Summer Home of the
Detroit Symphony Orchestra
Aldo Ceccato, Music Director

**Music is for everyone.
Meadow Brook is for you.**



Meadow Brook Music Festival Performance Schedule

DSO Thursdays at 8:30	Jazz Fridays at 8:30	DSO Saturdays at 8:30	Pops Sundays at 7:30
JUNE 24 DETROIT SYMPHONY ORCHESTRA ALDO CECCATO, <i>conductor</i> LORIN HOLLANDER, <i>pianist</i>	JUNE 25 BENNY GOODMAN	JUNE 26 DETROIT SYMPHONY ORCHESTRA ALDO CECCATO, <i>conductor</i> LORIN HOLLANDER, <i>pianist</i>	JUNE 27 DETROIT SYMPHONY ORCHESTRA ALDO CECCATO, <i>conductor</i> BEETHOVEN MARATHON (5 to 10 p.m.)
JULY 1 DETROIT SYMPHONY ORCHESTRA ALDO CECCATO, <i>conductor</i> NICANOR ZABALETA, <i>harpist</i>	JULY 2 OSCAR PETERSON	JULY 3 ALDO CECCATO, <i>conductor</i> NICANOR ZABALETA, <i>harpist</i>	JULY 4 UP WITH PEOPLE
JULY 8 DETROIT SYMPHONY ORCHESTRA ALDO CECCATO, <i>conductor</i> JESSYE NORMAN, <i>soprano</i> HENRY GROSSMAN, <i>tenor</i> EZIO FLAGELLO, <i>bass</i> JOSEPH GOLDMAN, <i>violin</i>	JULY 9 CHUCK MANGIONE WITH ESTHER SATTERFIELD	JULY 10 DETROIT SYMPHONY ORCHESTRA ALDO CECCATO, <i>conductor</i> JESSYE NORMAN, <i>soprano</i> HENRY GROSSMAN, <i>tenor</i> EZIO FLAGELLO, <i>bass</i> JOSEPH GOLDMAN, <i>violin</i>	JULY 11 DETROIT SYMPHONY ORCHESTRA THEODORE BIKEL ALDO CECCATO, <i>conductor</i> ITALO BABINI, <i>cellist</i>
JULY 15 ALDO CECCATO, <i>conductor</i> LAURA DE FUSCO, <i>pianist</i>	JULY 16—WNIC Nite CLEO LAINE WITH JOHN DANKWORTH	JULY 17 DETROIT SYMPHONY ORCHESTRA ALDO CECCATO, <i>conductor</i> LAURA DE FUSCO, <i>pianist</i>	JULY 18 DETROIT SYMPHONY ORCHESTRA ANDRE KOSTELANETZ, <i>conductor</i>
JULY 22 DETROIT SYMPHONY ORCHESTRA PAUL PARAY, <i>conductor</i>	JULY 23—WJZZ Nite MAYNARD FERGUSON	JULY 24 DETROIT SYMPHONY ORCHESTRA PAUL PARAY, <i>conductor</i>	JULY 25 NEW ENGLAND CONSERVATORY RAGTIME ENSEMBLE
JULY 29 DETROIT SYMPHONY ORCHESTRA EDUARDO MATA, <i>conductor</i> IRENE GUBRUD, <i>soprano</i>	JULY 30 TONY BENNETT WOODY HERMAN ORCHESTRA	JULY 31 DETROIT SYMPHONY ORCHESTRA EDUARDO MATA, <i>conductor</i> IRENE GUBRUD, <i>soprano</i>	AUG. 1 DETROIT SYMPHONY ORCHESTRA RAVI SHANKAR, <i>sitar</i> YOSHIMI TAKEDA, <i>conductor</i>
AUG. 5 SIXTEN EHRLING, <i>conductor</i> EUGENE FODOR, <i>violinist</i>	AUG. 6 PRESERVATION HALL JAZZ BAND	AUG. 7 DETROIT SYMPHONY ORCHESTRA SIXTEN EHRLING, <i>conductor</i> EUGENE FODOR, <i>violinist</i>	AUG. 8 DETROIT SYMPHONY ORCHESTRA RICHARD HAYMAN, <i>conductor</i>
AUG. 12 THE ELIOT FELD BALLET DETROIT SYMPHONY ORCHESTRA	AUG. 13 THE BALLET REPERTORY CO. DETROIT SYMPHONY ORCHESTRA	AUG. 14 THE ELIOT FELD BALLET DETROIT SYMPHONY ORCHESTRA	AUG. 15 GORDON MacRAE DAVID BENDER GORDON MUNFORD, <i>conductor</i>
AUG. 19 OTTO-WERNER MUELLER, <i>conductor</i> LAR LUBOVITCH DANCE COMPANY	AUG. 20 TEX BENEKE HELEN O'CONNELL BOB EBERLY	AUG. 21 OTTO-WERNER MUELLER, <i>conductor</i> LAR LUBOVITCH DANCE COMPANY	AUG. 22 JOHNNY RODRIQUEZ BARBI BENTON
AUG. 26 MUSICA AETERNA ORCHESTRA FREDERIC WALDMAN, <i>conductor</i> EUGENE ISTOMIN, <i>pianist</i>	AUG. 27 BARRY MANILOW	AUG. 28 FREDERIC WALDMAN, <i>conductor</i> EUGENE ISTOMIN, <i>pianist</i> MUSICA AETERNA ORCHESTRA	AUG. 29 BOBBY SHORT

DAYTIME SERIES AT MEADOW BROOK

CHILDREN'S CONCERTS

Continuing the great series of Children's Concerts begun last year, the Festival will present four concerts designed for youngsters. The Children's Concert series, beginning at 11

a.m., will be one hour long without intermission.

Food suited to young appetites is available at reasonable cost at Trumbull Terrace.

409th Performance
Saturday, July 3
DETROIT SYMPHONY ORCHESTRA
Philip Greenberg, conducting

Flavio Varani, pianist

MUSICAL UNCLE SAM

The company of "Uncle Sams" will show the audience the various sides of America's musical heritage.

GOULD — American Salute
IVES — Symphony No. 2 Fifth Movement
GERSHWIN — Rhapsody in Blue
COPLAND — "Saturday Night Waltz" and "Hoe Down" from Rodeo
SCOTT JOPLIN — The Entertainer

420th Performance
Saturday, July 17
DETROIT SYMPHONY ORCHESTRA
Philip Greenberg conducting

MAKING BEAUTIFUL RUSSIAN MUSIC

Philip Greenberg will conduct highlights from great Russian music.

430th Performance
Saturday, July 31
DETROIT SYMPHONY ORCHESTRA
Philip Greenberg, conducting

Joseph Goldman, violinist
Berenice Mrozinski, pianist

THE MIME ENSEMBLE

Tom Ashton, director

WATCHING MUSIC GROW

Mimes will portray visually transformations that occur in music. Concert will feature the winner of the first annual Meadow Brook Young Artists Competition.

ROSSINI — Overture to William Tell
HAYDN — Andante from Symphony No. 101 "The Clock"

GOTTSCALK — L'Union
Miss Mrozinski

PAGANNINI — Caprice #24 for Violin (excerpts)
Mr. Goldman

RACHMANINOFF — Rhapsody on a Theme by Paganini (excerpts)
Miss Mrozinski

439th Performance
Saturday, August 14
THE ELIOT FELD BALLET
MUSIC IN MOTION

The Eliot Feld Ballet will present a program that shows how music naturally evolves from and expresses itself through body movement.

OPEN REHEARSALS

MATINEE OPEN REHEARSAL SERIES will continue the Festival's series of mid-day, mid-week open rehearsal concerts — something to delight, to instruct, to enjoy . . .

Four open rehearsals beginning with a lecture on the music of the program at 1:00 p.m. Rehearsal begins at 1:30 p.m. Bring your own lunch or purchase a brisk, light salad bar plate (served at noon).

406th Performance
Wednesday, June 30
DETROIT SYMPHONY ORCHESTRA
Aldo Ceccato, conductor

Maestro Ceccato will rehearse European music by Liszt, Smetana, Torelli, and others.

417th Performance
Wednesday, July 14
DETROIT SYMPHONY ORCHESTRA
Aldo Ceccato, conductor

A rehearsal of Rachmaninoff, Tchaikovsky and Scriabin.

427th Performance
Wednesday, July 28
DETROIT SYMPHONY ORCHESTRA
Eduardo Mata, conductor

Eduardo Mata will conduct a rehearsal of Ginastera, Orbon, Villa-Lobos and Chavez.

442nd Performance
Wednesday, August 18

A working rehearsal of modern dance repertoire. Lar Lubovitch will discuss the evolution of this major American innovation.

BOX OFFICE HOURS

Monday thru Wed.—1-7 p.m.

Thurs. thru Sat.—12 Noon-9 p.m.

Sunday—2-8:30 p.m.

Phone: 377-2010

FESTIVAL GROUNDS OPEN
TWO AND A HALF HOURS PRIOR
TO CONCERT TIME
ON PERFORMANCE NIGHTS

All concerts start promptly. Late-comers will be seated at the discretion of the management.

The Steinway is the official piano of the Detroit Symphony Orchestra and the Meadow Brook Music Festival.

The ballet programs are presented with the support of the Michigan Council for the Arts and the National Endowment for the Arts.

TABLE OF CONTENTS

	Page No.
Musical Notes in Detroit	
A bicentennial look at Detroit and her music	13
The Many Roads to Meadow Brook	
300 Years of Music Festivals	17
Oakland University	
Dedicated to Cultural Enrichment through Education and the Arts	22
Past Meadow Brook Chairpersons	46
1976 Meadow Brook Executive Chairpersons	46
1976 Meadow Brook Performance Schedule	50
1976 Children's Concerts	51
1976 Open Rehearsals	51
Aldo Ceccato	52
Detroit Symphony Orchestra	53
1976 Meadow Brook Friday Jazz Series	54-55
1976 Meadow Brook Friday Jazz Series	54-55
Meadow Brook Music Festival Chorus	56
1976 Meadow Brook Sunday Pops Series	57
1976 Meadow Brook Program Notes	58-87
1976 Meadow Brook Committees	89
Major Donors to Meadow Brook—1976	97
Contributing Sponsors to the Meadow Brook Experience	98
Index to Advertisers	134

Meadow Brook Music Festival Staff

Robert A. Dearth
President of Meadow Brook Performing Arts Company

Leon Petrus
Managing Director

Vince Ammann
Business Manager

Jane Mosher
Director of Community Relations

Susan Day
Box Office Treasurer

Cheryl Burnet
Subscription Manager

Thomas Stapleton
Director of Operations

Bob Hayward
Stage Manager

Richard Fay
Administrative Assistant

Oakland University —

Dedicated to Cultural Enrichment Through Education and the Arts

From its inception, Oakland University has followed a goal of cultural enrichment through education and the arts.

The achievements of the first 17 years speak for themselves. Now, as the university moves toward maturity, the future holds high promise.

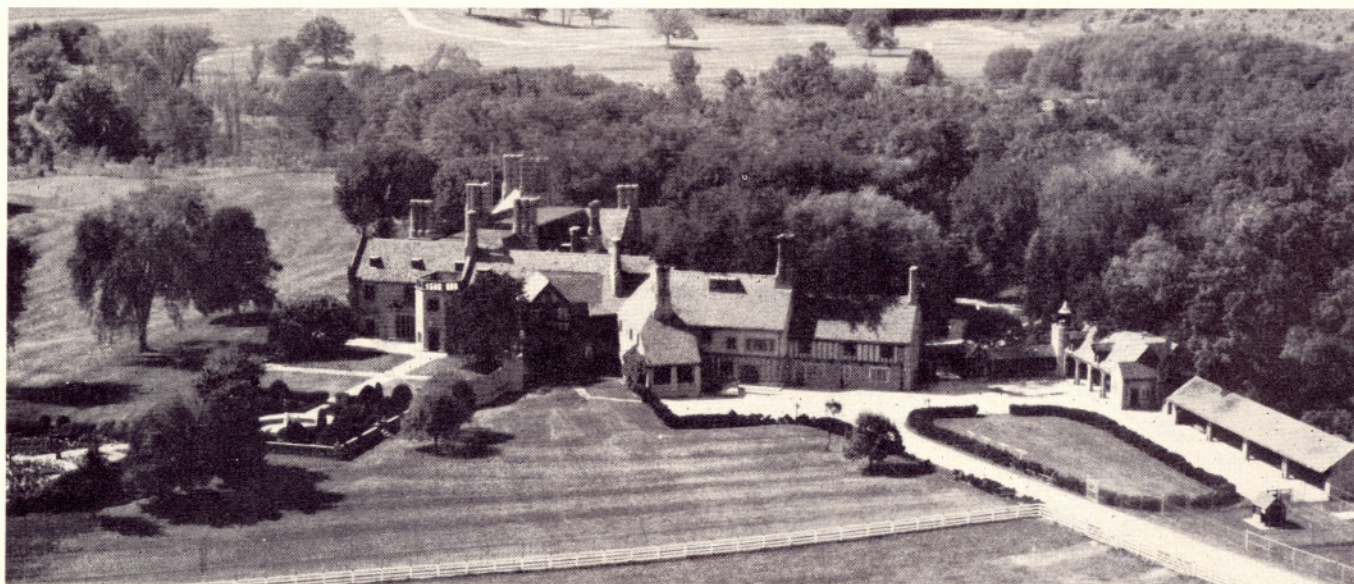
Oakland opened in 1959 with a class of 570 students. Today the university serves more than 10,500 full- and part-time students; and more than ten times that number visit the campus for concerts, conferences, tours, and athletic events.

Oakland has become a diverse institution of medium size. It is a significant academic and cultural force in Michigan.

Major academic programs include the College of Arts and Sciences, School of Economics and Management, School of Education, School of Engineering, and School of Performing Arts. In addition, a strong new unit, the School of Nursing, opened in 1975.

Three new administrative units have been created to plan programs of strong community interests. They include a Center for Community and Human Development, a Center for Health Sciences, and a Center for General and Career Studies. The last unit administers a new Bachelor of General Studies Degree designed especially to serve the growing adult, part-time evening population.

The university has distinctive programs in area studies, human resource development, biological sciences, early childhood education, and engineering. The National Science Foundation supports the university's undergraduate research programs in biology and chemistry. There are more than 60 undergraduate courses of study, 20 master's degree programs, and a doctoral program in engineering. Since it opened in 1965, the graduate area has expanded and in 1974-75 it accounted for 22 percent of all credits delivered at the institution. In addition, the Division of Continuing Education serves thousands of adults each year in noncredit courses, conferences



MEADOW BROOK HALL, OAKLAND UNIVERSITY, ROCHESTER, MICHIGAN

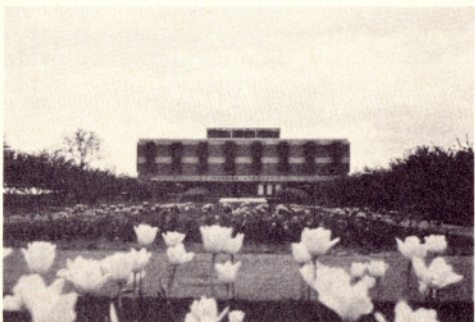
Former home of Oakland University benefactors, Mr. & Mrs. Alfred G. Wilson. The 100-room Tudor mansion, complete with furnishings and art treasures, is now run by the university as a conference and cultural center.

and institutes, and career counseling programs for men and women.

The university's faculty has earned most of the prestigious research awards made by federal agencies and private foundations, and external grant support exceeds \$2 million each year. Project support is received from the National Health, National Science Foundation, and the U.S. Office of Education, among others. Oakland is the youngest institution nationally to receive chapter status in Sigma Xi, the national honorary research society.

Enrichment of community life through programs of the highest caliber is an OU goal. The founding of the Meadow Brook Music Festival in 1964 fulfilled the concept, envisioned by D. B. Varner, the university's first chancellor, that Oakland serve as a major center for the performing arts. The Meadow Brook Theatre, established in 1967, and the Meadow Brook Art Gallery, which opened in 1972, contributed new dimensions to that concept.

The premiere concert of the Meadow Brook Music Festival was held at the Howard C. Baldwin Pavilion in a setting personally chosen by Mrs. Wilson, benefactress of the university. The festival is the summer home of the Detroit Symphony Orchestra. The festival has attracted artists and conductors of international renown, presenting premiere performances in both music and dance, and expanding to include jazz, pops, and ballet as well as the classics. It has sponsored summer institutes with master classes directed by Vladimir Ashkenazy and Itzhak Perlman, and has been a showcase for pre-concert chamber music, as well as operatic concerts, open-air art exhibits, and ballet and modern dance rehearsals.





MEADOW BROOK ART GALLERY

OU President Donald D. O'Dowd, far left, architect Minoru Yamasaki, M. Malcolm Levy, and Kiichi Usui attend an acclaimed Meadow Brook Art Gallery exhibit of the works of Yamasaki. Levy is director of the World Trade Center. Usui is gallery curator.

Meadow Brook Theatre just celebrated its tenth anniversary season. It has developed stature as an outstanding professional regional theatre, ranked among the finest in the country. It mounts eight productions from October through May, with a roster of distinguished directors and nationally recognized actors, highlighting work by Sophocles, Shakespeare, Moliere, G. B. Shaw, Agatha Christie, and Tennessee Williams, as well as Michigan premieres of contemporary writers.

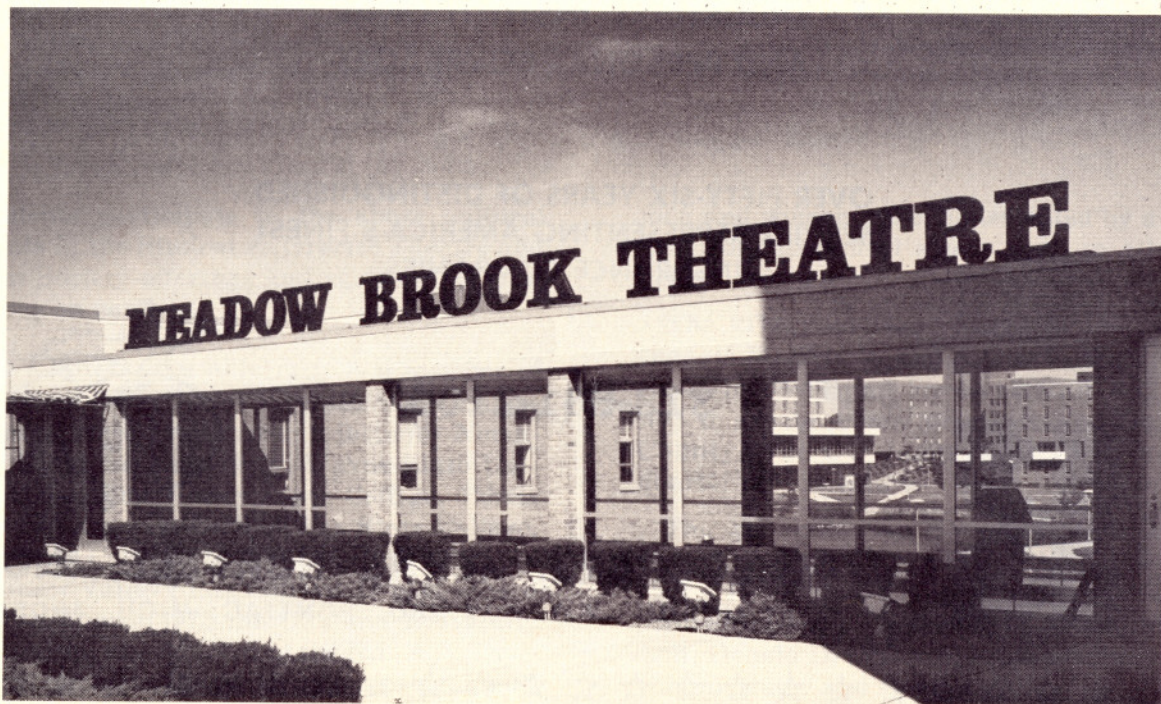
This spring it presented the world professional musical premiere of "Yankee Ingenuity." The play is an adaption of "Fashion," a comedy by America's first successful woman playwright, Anna Cora Mowat.

The Meadow Brook Art Gallery has received rave reviews for several of its original exhibitions, such as, "Art of the T'Ang Dynasty," the "Minoru Yamasaki Retrospective," and "Found Objects: Unintended Art." Nationally known private collections, a permanent collection of African art, and exclusive showings of Oriental art objects have made the Art Gallery a distinguished addition to the cul-



tural arts endeavor of Oakland University and to the metropolitan community.

The gallery has received a \$17,500 grant from the National Endowment for the Arts for a bicentennial art exhibit entitled "Through the Eye of the East: Time of American Independence."





Baldwin Memorial Pavilion — Summer home of the Detroit Symphony Orchestra and the cultural focal point for thousands who annually attend the Meadow Brook Music Festival.

Students participate in the above cultural events in the Student Enterprise Theatre and Film Society offerings and varied other programs on campus.

In addition, the university is a member of the Great Lakes Intercollegiate Athletic Conference, whose membership includes Northern Michigan University, Wayne State University, Grand Valley State College, Ferris State College, Lake Superior State College, Hillsdale College, Northwood Institute, and Saginaw Valley State College. In post-season competition in 1975 the Oakland University swim team placed third at the N.C.A.A. Division II championships. Varsity sports for both

men and women are complemented by a program of intramural sports open to all students.

The "Oakland idea" began in 1957 when the late Matilda R. and Alfred G. Wilson left their Meadow Brook Farms estate and \$2 million to create a new university in Oakland County. The OU campus is situated on a quarter of that estate.

The university was governed by Michigan State University from 1957 until 1970. In that year it received its independence, its own appointed Board of Trustees, and its first president, Donald D. O'Dowd, a nationally known administrator and researcher.

OAKLAND AT A GLANCE

Enrollment	10,565
Budget	\$28,506,415
Campus Book Value	\$59,698,371
Campus Size	1,504 acres
Residence Halls	
Capacity	1,450
Academic Units	
College of Arts and Sciences	
School of Economics and Management	
School of Education	
School of Engineering	
School of Nursing	
School of Performing Arts	

Members of the Board of Trustees OAKLAND UNIVERSITY

Ruth H. Adams
Richard H. Headlee
Marvin L. Katke
David B. Lewis
Alex C. Mair
Ken Morris
Arthur W. Saltzman, *Chairperson*
Alan E. Schwartz
Donald D. O'Dowd, *President*
John H. DeCarlo, *Vice President*
and Secretary to the Board
Robert W. Swanson, *Vice President*
and Treasurer to the Board



We salute the past Meadow Brook Chairpersons for a job well done!



Mr. and Mrs. Semon Knudsen
Founding Chairpersons 1964



Mr. and Mrs. Rinehart S. Bright
Chairpersons 1965



Mr. and Mrs. Ben D. Mills
Chairpersons 1966



Mr. and Mrs. James O. Wright
Chairpersons 1967



Mr. and Mrs. Virgil E. Boyd
Chairpersons 1968



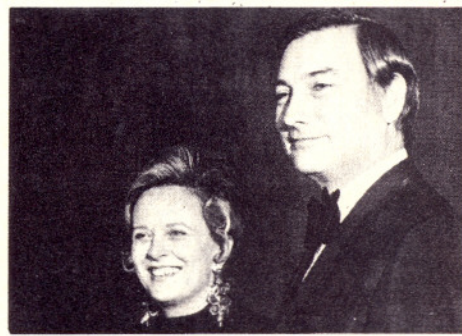
Mr. and Mrs. Marvin L. Katke
Chairpersons 1969



Mr. and Mrs. E. M. Estes
Chairpersons 1970



Mr. and Mrs. John J. Riccardo
Chairpersons 1971



Mr. and Mrs. William P. Benton
Chairpersons 1972



Mr. and Mrs. Robert D. Lund
Chairpersons 1973



Mr. and Mrs. Eugene A. Cafiero
Chairpersons 1974



Mr. and Mrs. Donald E. Petersen
Chairpersons 1975

1976 Meadow Brook Executive Chairpersons Mr. and Mrs. F. James McDonald

It gives me great pleasure to express our most sincere appreciation to Mr. and Mrs. F. James McDonald for their expert guidance and leadership of the Meadow Brook Executive Committee during the 1975-76 season.

Founded in 1964, the Meadow Brook Music Festival has grown to become one of the most prestigious summer music festivals in the nation under the chairmanship of outstanding community leaders.

Over the last twelve years, the commitment of involved volunteers has contributed greatly to the success of both the Meadow Brook Music Festival and Theatre, and this year is no exception. Both the Meadow Brook Music Festival and Theatre are currently experiencing tremendous growth. It is a tribute to the McDonalds' leadership that this momentum has increased during their tenure. Their expectations for Meadow Brook have generated success.

Under their direction, the much expanded activities of the Women's Committee have produced increased sales and the efforts of the Finance Committee have made it possible for members of the metropolitan community to share a love of music in an enchanting setting.

Meadow Brook this year celebrates the Bicentennial and music's contribution to American life.

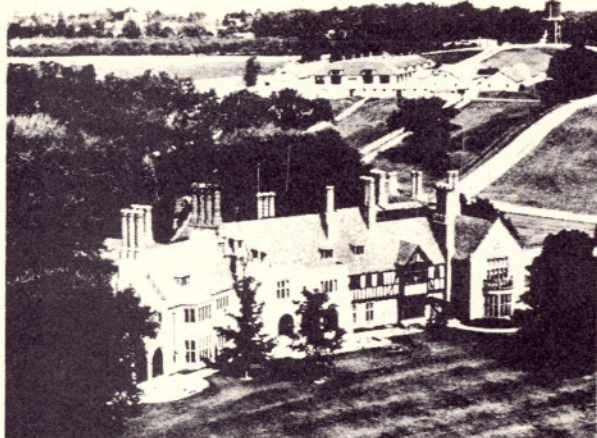
Oakland University and Meadow Brook are deeply grateful to Betty and Jim for their insight and enthusiastic leadership of a dedicated Executive Committee.



Donald D. O'Dowd
President, Oakland University

MEADOW BROOK HALL

WHERE THE MAGIC OF MEADOW BROOK ALL BEGAN



CONFERENCES

Meadow Brook Hall is a Center for group meetings, retreats, seminars, and overnight conferences.

Brochures are available on request.

It was in this magnificent Tudor-style mansion that the dream of Oakland University began, a dream that has enriched thousands of lives, and which you now enjoy in the beautiful sound and setting of Meadow Brook Music Festival.

Meadow Brook Hall was the home of Matilda and Alfred G. Wilson, who gave their entire estate to the people of Michigan for the founding of Oakland University. Following their deaths, their home was opened to the public as a cultural and conference center. It now remains as one of the finest examples of residential architecture anywhere in the world.

Carefully preserved with original furnishings, Meadow Brook Hall is the visual history of an era in American life that flourished only briefly. Begun in 1926 and completed in 1929, the Hall contains examples of skills and craftsmanship that are now lost arts. Its 100 rooms are filled with hand-carved paneling, sculptured stone arches, fine glasswork and exquisite appointments. Every room reflects the unbounded luxury of a way of life that is gone forever.

A visit to Meadow Brook Hall is an experience you'll never forget.

TOURS

Year Around:

Sundays 1-5 p.m.

(last tour, 4 p.m.)

July and August:

Mon.-Sat. 10-5

(last tour, 3:30 p.m.)

(Sun. 1-5, last tour 4 p.m.)

Adults: \$3.50

Under 12 or over 65: \$2.00

Groups:

Year around

by appointment

Daytime (20 or more)

\$2.50 (adults)

Evening (30 or more)

\$3.50 (adults)

(313) 377-3140

Division of Continuing Education
Oakland University, Rochester, Michigan 48063



October 3-November 14, 1976

"GERTRUDE KASLE COLLECTION AT THE MEADOW BROOK ART GALLERY" — sponsored by Meadow Brook Gallery Associates

November 28-December 19, 1976

"SPIRIT OF INDEPENDENCE" — Kent Bicentennial Portfolio — An exhibition sponsored by The Lorillard Corporation and circulated by The American Federation of Arts, New York

January 23-March 13, 1977

"ART IN ARCHITECTURE" — selection of architectural complexes showing the integration of art and architecture in the United States, Europe and Asia

March 27-May 8, 1977

"GARNER TULLIS — THE INTERNATIONAL INSTITUTE OF EXPERIMENTAL PRINTMAKING"

Gallery Hours:

Tuesday-Friday: 1-5 pm

Saturday & Sunday: 2-6:30 pm

*Evenings: 7:30-8:30 pm

*Only when there is a Meadow Brook Theatre performance

Meadow Brook Art Gallery

Meadow Brook Music Festival

Aldo Ceccato, Music Director



ALDO CECCATO

Aldo Ceccato, the vibrant young Music Director of the Detroit Symphony Orchestra since May 1974, is also Music Director of the Meadow Brook Music Festival. Last fall he became in addition Music Director of the Hamburg Philharmonic, making him one of a group of the world's leading conductors who hold dual music directorships.

Maestro Ceccato has repeatedly conducted every important American orchestra, including Boston, Chicago, Cleveland, Philadelphia and New York, and all of the major orchestras of the world. Of his recent guest-conducting appearances special mention should be made of his debut concerts with the Berlin Philharmonic, appearances at the Wiener Festwochen 1976, and a return engagement with the San Francisco Symphony just before he opened the 1976 Meadow Brook Music Festival.

After a prominent career as a pianist in his teens, Maestro Ceccato turned to conducting. Having studied at the Hochschule in Berlin and the Verdi Conservatory in Milan, he made his striking debut in Milan conducting the twelve Vivaldi Opus 8 concerti, which quickly established him as one of the exciting new conducting talents on the European scene. Several European engagements followed, including appearances at La Scala, Santa Cecilia of Rome, San Carlo in Naples, Venice's La Fenice and the Maggio Musicale in Florence, where he led the Italian premiere of Busoni's *Die Brautwahl*. Soon he found himself conducting all over Europe. Maestro Ceccato has appeared in concerts with the London Philharmonic, the Royal Philharmonic Orchestra, at the Edinburgh and Prague Festivals, as well as conducting several highly-acclaimed operas at Covent Garden and Glyndebourne. His recordings include *Maria Stuarda* for ABC Records and *La Traviata* for Angel (both with Beverly Sills).

Now dividing his time between the United States and Europe, Maestro Ceccato and his wife, daughter of the famous conductor-composer Victor de Sabata, and their two young sons make their homes in suburban Detroit, Hamburg, and Bergamo.

The Detroit Symphony Orchestra

The Detroit Symphony Orchestra was founded in 1914, and at present consists of 97 members. The Orchestra enjoys a reputation of undisputed excellence, as is evidenced by its many invitations to perform outside of Detroit. In past years repeated performances have been given in such august places as Carnegie Hall, before the United Nations, and at the John F. Kennedy Center for the Performing Arts in Washington, D.C. The Orchestra is also the resident Symphony at the summer Meadow Brook Music Festival.

The roster of great performers who have appeared with the Detroit Symphony includes such legendary names as Richard Strauss, Georges Enesco, Rachmaninoff, Victor Herbert, Prokofiev, Mitropoulos, Robert Casadesu, Oistrakh, and Stravinsky, and contemporary artists such as Rubinstein, Heifetz, Stern, Serkin, Mischakoff, Horowitz, and Bachauer.

Former conductors of the Orchestra were Weston Gales, Ossip Gabrilowitsch, Victor Kolar, Franco Ghione, Karl Krueger, Paul Paray, and Sixten Ehrling. The exciting young Italian conductor Aldo Ceccato became Principal Conductor of the Detroit Symphony in September 1973 and was appointed Music Director in May 1974.

In addition to its regular Thursday and Saturday evening concerts in Ford Auditorium, the Orchestra has diversified its activities to bring its music to a larger audience in the community — as well as to audiences in out-state Michigan. In Detroit, these activities include the Sunday afternoon Kresge Omnibus Family Concerts series; the Friday evening "Zodiac" series designed to appeal to students, mods, under 30s; the immensely popular Friday morning NBD Coffee Concerts; and the Saturday Young People's Concerts. During the summer, the Orchestra also presents several series of free concerts, at inner-city schools, the Michigan State Fairgrounds, Belle Isle and other local parks and shopping malls.
September 1975

ALDO CECCATO

Music Director

PAUL FREEMAN

Conductor-in-Residence

PHILIP GREENBERG

Conducting Assistant

FIRST VIOLINS

Gordon Staples
Concertmaster

Bogos Mortchikian
Associate Concertmaster

Joseph Goldman
Gordon Peterson
Assistant Concertmasters

Santo Urso
Jack Boesen
Emily Mutter Austin
Derek Francis
Alan Gerstel
Nicholas Zonas
LeAnn Toth
Beatriz Budinszky
Malvern Kaufman
Richard Margitza
Linda Snedden Smith
Paul Phillips
Elias Friedenzohn

SECOND VIOLINS

Edouard Kesner
Felix Resnick
Alvin Score
Lillian Downs
James Waring
Margaret Tundo
Walter Maddox
Roy Bengtsson
Thomas Downs
Robert Murphy
Larry Bartlett
Joseph Striplin
Bruce Smith
Gabriel Szitas

VIOLAS

Nathan Gordon
David Ireland
Philip Porbe
Eugenia Staszewski
LeRoy Fenstermacher
Hart Hollman
Walter Evich
Anton Patti
Gary Schnerer
Catherine Compton

VIOLONCELLOS

Italo Babini
James C. Gordon Chair
Thaddeus Markiewicz
Edward Korkigian
Mario DiFiore
David Levine
John Thurman
Barbara Fickett
Marcy Schweickhardt
Susan Baleini
Debra Fayroian Hillman
William Graham

BASSES

Robert Gladstone
Raymond Benner
Frank Sinco
Maxim Janowsky
Linton Bodwin
Donald Pennington
Stephen Edwards
Albert Steger

HARPS

Elyze Yockey Ilku
Carole Crosby

FLUTES

Ervin Monroe
Shaul Ben-Meir
*Robert Patrick
Clement Barone

PICCOLO

Clement Barone

OBOES

Donald Baker
Ronald Odmark
*Robert Sorton
Treva Womble
Harold Hall

ENGLISH HORN

Treva Womble

CLARINETS

Paul Schaller
Douglas Cornelsen
*Brian Schweickhardt
Oliver Green

BASS CLARINET

Oliver Green

E-FLAT CLARINET

Brian Schweickhardt

BASSOONS

Robert Williams
Phillip Austin
*Paul Ganson
Lyell Lindsey

CONTRABASSOON

Lyell Lindsey

FRENCH HORNS

Eugene Wade
Charles Weaver
Edward Sauve
Willard Darling
*Lowell Greer
Keith Vernon

TRUMPETS

Donald Green
Gordon Smith
*Alvin Belknap

TROMBONES

Raymond Turner
Joseph Skrzynski
Elmer Janes

TUBA

Wesley Jacobs

TIMPANI

Salvatore Rabbio
*Robert Pangborn

PERCUSSION

Robert Pangborn
*Norman Fickett
Raymond Makowski
Sam Tundo

LIBRARIAN

Albert Steger
Elmer Janes, assistant

PERSONNEL MANAGER

Oliver Green
*Assistant Principal

MEADOW BROOK MUSIC FESTIVAL CHORUS

Dr. Raynold Allvin, director

Accompanist: **Beverly Labuta**; Associate Accompanist: **Louise Angermeier**

Section Leaders: **David Nast and Martha Redman**



The MEADOW BROOK FESTIVAL CHORUS is comprised of professional and amateur musicians from the southeastern Michigan area together with music students of Oakland University. It is formed each year in early May and continues through the summer Meadow Brook season. It is open to all singers by audition.

Dr. Raynold Allvin, Chorusmaster of the Meadow Brook Festival Chorus is Chairman of the Department of Music at Oakland University. The Chorus was first formed under his direction in 1972 and has continued as the official chorus of the Meadow Brook Music Festival.

Dr. Allvin came to Michigan from conducting and teaching posts in California where he was conductor of the West Valley Symphony in San Jose, associate conductor of the Stanford Symphony and the Stanford Youth Symphony.

Since the formation of the Michigan Opera Theatre, Dr. Allvin has also served as its chorusmaster.

Soprano

Marianne L. Albert
Patricia Alkon
Floy Alschbach
Patricia Anderson
Martha Bahnmler
Harriet Bray
Frances Brockington
Cynthia Brown
Anne Burns
Roberta Carter
Mary Cichowski
Mary K. Clauser
Helen Cousins
Jenny Dixon
Aileen Erdmann
Wendy Faltler
Marianne Garrett
Trish Gaier
Lisa Gibson
Shelley Gilbert
Irena Goldsworthy
Marjorie Halcrow
Madonna Hamilton
Rosalind Hurwitz
Jane Jacobsen
Mary Jardine
Irene Jordan

Involut Jessup
Elaine Keinert
Charlotte Kendrick
Carole Kluska
Diana Kolakowski
Shirley A. Kraemer
Pat Kushner
Lois Ann Lawson
Marian Lohff
Elna Lord
Valeri Loiselle
Darlyne Luce
Carol Madalin
Nancy Marentette
Marguerite Marshall
Dorothy McKibben
Sally Jane Moag
Mary Ann Montgomery
Joan Moore
Michelle Morgan
Margaret Moser
Nancy Nowak
Betty Page
Susan Piotrowski
Veda Diane Pesda
Debbie Poore
Laurie Claire Powers
Cathy Russman
Kaye Rittinger

Helen Rowin
Rose Rutledge
Edith Sanford
Sarah Schnarr
Mary Shiner
Jane Smith
Katie Smith
Nancy Smith
Clara Sprung
Jenny Lynn Stewart
Selma Storman
Mary Margaret Thomas
Linda Thompson
Kathryn Travnikar
Linda Undy
Nancy Verner
Irene Walrad
Catherine Weymouth
Jo Williams
Mary Lou Williams
Cheryl Wilton

Alto

Beth Adams
Joanne Albert
Leslee Allvin
Debbie Ambrose
E. Lottie Ball

Diane Barry
Roxanne Bartschi
Elaine Block
Marcia Bottomley
Ruth A. Brammeier
Mary Lee Branzo
Lorraine Brozo
Marie Crusinberry
Dorothy Dittkoff
Jane Dornbrock
Loraine Edwards
Judith A. Faber
Claudi Gellhood
Martha M. Gibser
Katherine Gracki
Marsha Guerrein
Emelia Handley
Carol Ann Hartman
Connie Hornung
Arlene Kern
Barbara Knapp
Brenda Kuessner
Peggy Lane
Mary Lebow
Janet Lemanski
Jane Lombard
Anita Miller
Muriel Morrison
Therese O'Connor

Ilaine L. Packman
Wanda Panduren
Alice C. Pranis
Martha P. Redford
Margery C. Reuther
Sally Roediju
Claudia Rogell
Annette Marie Ryan
Mary Evelyn Sundlof
Pat Schwartz
Karen Sidley
Jane Hannah Suell
Halina Ujda
Sharon Ulmer
Michele Utterson
Connie Ann Weiner
Pat Williford
Vicki Wilson
Sandra Kay Woods

Tenor

Lisa Marie Aboud
Norman B. Arendell
Craig A. McCardell
Judy Dougherty
Ken Emerson
Erica Fischer

Charles L. Furchak
Charles Hawes
Greg Holliday
John T. Kelly
Roy Lambert
John Kennedy
Gerald Kuessner
Aimee LeBlanc
Maris Long
Dennis Murphy
Richard A. Pouget
David Ritchie
Fred Rosenkranz
Margaret T. Rossier
David Samet
George R. Scott
Tricia Sittig
Steven T. Hansen
Sharon Wilton

Bass

Ed Bondy
Robert M. Burns
Norm Brinkman
T. F. Crusinberry
Chuck Dougherty
Dave Erdmann

William A. Glasson
Chris Karaguleff
Michael J. Kollins
Brian D. Krosner
James A. Kurz
Jack Ledingham
Allen Leider
Peter Lundell
Andrew Markel
Arnaud T. Marshall
David Nast
Chuck O'Grady II
Stephen S. Page
John C. Picha
Kenneth Piotrowski
John J. Rodgers
Alexander Rogowski
Robert Ross
Ted Rulfs
Robert Schlort
Clayton Schlatterbeck
David Schmidt
Randall Shinaberry
David C. Sloan
Gerald Smigell
William A. Sundlof
Wallace Szumny
William R. Thauvette
John Wargelin

OUR THANKS

The following organizations have provided the ushers for all Meadow Brook Music Festival performances. Their cooperation and that of all the individuals who have volunteered to serve as ushers is hereby gratefully acknowledged.

**Jr. Women's Association of the Detroit Symphony Orchestra
Pontiac Tuesday Musicale
The Birmingham Musical
Junior League of Birmingham, Inc.
Huntington Woods Study Club
Birmingham Evening Newcomers Club
Rochester Newcomers Club
Rochester Junior Women's Club**

THE 1976 MEADOW BROOK COMMITTEES

Mr. and Mrs. F. James McDonald General Chairpersons

Mr. and Mrs. John C. Secrest Vice Chairpersons

Mr. and Mrs. Donald E. Petersen Past General Chairpersons

EXECUTIVE COMMITTEE — 1976

Mr. and Mrs. F. James McDonald
General Chairpersons
Mr. and Mrs. John C. Secrest
Vice Chairpersons
Mr. and Mrs. Donald E. Petersen
Past General Chairpersons
Mr. and Mrs. Richard O'Connor
Advertising & Promotion Chairpersons
Mr. and Mrs. Peter C. Darin
Buildings & Grounds Chairpersons
Mr. and Mrs. Leonard T. Lewis
Business Liaison Chairpersons
Mr. and Mrs. Henry Domzalski
Children's Concerts Chairpersons
Mr. and Mrs. Robert Fife
Festival Projects Chairpersons
Mr. and Mrs. Roger B. Smith
Finance Chairpersons
Mr. and Mrs. Keith Ebersole
Finance Co-Chairpersons
Mr. and Mrs. Paul E. Prill
Finance Co-Chairpersons
Mr. and Mrs. Stephan Sharf
Finance Co-Chairpersons
Mr. and Mrs. Richard C. Van Dusen
Finance Co-Chairpersons
Mr. and Mrs. Robert J. Timyan
Flint Area Chairpersons
Mr. and Mrs. James A. McCullough
Industry Liaison Chairpersons
Mr. and Mrs. Kenneth Bannon
Labor Liaison Chairpersons
Mr. and Mrs. Walton A. Lewis
Professional Liaison Chairpersons
Mr. and Mrs. Frederick K. Cody
Program Advertising Chairpersons
Mr. and Mrs. Fred D. Houghten
Rochester Festival Club
Co-Chairpersons
Mr. and Mrs. Lawrence C. Prudhomme
Rochester Festival Club
Co-Chairpersons
Dr. and Mrs. Irving F. Burton
Special Promotions Chairpersons
Mr. and Mrs. William H. Boutell
Theatre Projects Chairpersons

Finance Committee

John A. Abdo
Gary N. Andrews
R. E. Backstrom
Marty Bibbee
K. Bolthouse
Jesse F. Bowman
Len Brady
G. P. Burford
Harold Cook
Jim Cull
Steward Dopp
W. D. Grant
R. E. Hatfield
R. Haupt
N. C. Johnson
Jack Kahle
Tom A. Kenney

D. J. Kingsbury
Kerry Langdon
C. D. Lauer
L. W. Ledford
Ron Leirvik
Walton Lohrer
Bob A. Mallman
Richard Marr
J. E. Masterson
R. L. McKee
Howard Meade
Rocco V. Messina
Robert Miller
Richard Morrison
E. C. Moser
P. R. O'Hara
E. J. Schott
Pete Tattis
H. R. Townsley

Season Ticket Committees

Mrs. F. James McDonald
General Chairperson of the Meadow Brook Committee
Mrs. John C. Secrest
Vice Chairperson of the Meadow Brook Committee
Mrs. Robert E. Fife
General Chairperson of Women's Committee

Area Chairpersons

Mrs. Ed E. Barker
Miss Eleanor Bennick
Mrs. John Debbink
Mrs. Ferdinand Gaensbauer
Mrs. George Griffith
Mrs. G. Alfred Ingram
Mrs. Warren Jollymore
Mrs. Richard L. King
Mrs. Garry L. Powledge
Mrs. Robert Reid
Mrs. B. J. Schwartz
Mrs. Robert Spahr
Mrs. Robert J. Timyan
Mrs. Eric Wiltshire
Mrs. William Yetzer

Captains

Mrs. Charles Allen
Mrs. Fleming Barbour
Mrs. Norman Bolz
Mrs. Dale Brown
Mrs. Rockwood Bullard
Mrs. George A. Coury
Mrs. Frank E. Cronin
Mrs. Francis Cross
Mrs. Robert DeCeckere
Mrs. William Elliott
Mrs. Bernard Ernst
Ms. Dianne Fritsch
Mrs. A. T. Hastings
Mrs. Clem Jensen
Mrs. William Kelly
Mrs. William B. Lane
Ms. Carlann Luetzow
Mrs. Reid MacGuidwin
Mrs. John MacKenzie

Ms. Betty Martin
Mrs. Sheldon Moyer
Mrs. Robert Nitschke
Ms. Helen Pelling
Mrs. Robert Perry
Mrs. Ross Pierce
Mrs. Mark Richards
Mrs. Harvey Sanderson
Mrs. John Sigler
Mrs. Bernhard Stroh
Mrs. Loe Szalma
Ms. Pat Vom Steeg
Mrs. William H. Welch

Sales Committee

Mrs. Howard Acheson
Mrs. John Alstette
Mrs. Vyril Althouse
Mrs. W. C. Baird
Mrs. John W. Bauer
Miss Gloria Beemer
Mrs. John Beggs
Mrs. Newlyn Benford
Mrs. Edgar Bennet
Ms. Gladys Blossfeld
Mrs. Richard Bourgon
Mrs. John L. Bradford
Mrs. Charles Brethen
Mrs. Gerald Brielmaier
Mrs. Marilyn Brooks
Mrs. Robert O. Brown
Mrs. William H. Bundesen
Mrs. Claire Burmeister
Mrs. Robert Burgon
Mrs. David Burton
Mrs. Aldo Ceccato
Mrs. Robert Chandler
Ms. JoAnn Chmielewski
Mrs. Herbert Christner
Ms. Sharon Cloney
Mrs. Harley L. Conrad
Mrs. Ronald Cooley
Mrs. Joseph Cosgrove
Miss Mary Cosgrove
Mrs. Robert Cosner
Mrs. Bernard Craig
Mrs. S. W. Crater
Ms. Margaret Curlee
Ms. Suzanne Cutler
Ms. Ruth Curtis
Mrs. J. C. Davis
Mrs. Lewis Davis
Ms. Martha Day
Mrs. John Deacon
Ms. Nancy DiCarlo
Mrs. Timothy Dinan
Mrs. Robert Dobrow
Mrs. David Dobson
Mrs. Patrick Doherty
Mrs. Robert Dunham
Mrs. Robert Dusseau
Mrs. F. W. Van Dwyne
Mrs. Gary Eisenberg
Mrs. James Ellis
Mrs. Harold R. Ellison
Mrs. Francis A. Engelhardt
Ms. Marty Evans

THE 1976 MEADOW BROOK COMMITTEES (continued)

Mrs. John Fauver
Mrs. Leon Fill
Ms. Sharon Finnerty
Mrs. Fred Fischer
Mrs. R. A. Fischer
Ms. Nina Flanigan
Mrs. Lyman M. Forbes
Mrs. Stan Ford
Mrs. Lawrence Freedman
Mrs. William Furlong
Mrs. Phillip Gerwert
Mrs. Robert Gilfert
Mrs. Robert Gill
Mrs. Herbert Goldstein
Mrs. Douglas Graham
Ms. Doreen Greenwald
Mrs. Greg Gregson
Ms. Sybil Griffiths
Mrs. Fred Goldberg
Mrs. Clark Guinn
Mrs. Richard Gumpfer
Ms. Nancy Haapaniemi
Mrs. Leonard Hack
Ms. Erlene Hafer
Ms. Linda Hall
Mrs. Kurt P. Haller
Mrs. Ernest Hamady
Mrs. William Hamel
Ms. Gail Hansen
Mrs. William Harber
Ms. Virginia Hatzebeler
Ms. Cindy Heinrich
Mrs. Ned H. Heinzerling
Mrs. L. D. Heitsch
Mrs. John T. Humphries
Mrs. Frank Irish
Mrs. Colin John
Mrs. Richard P. Joy
Mrs. William E. Judy
Ms. Barb Kalb
Dr. Lawrence Katz
Mrs. Raymond Kelly, Jr.
Mrs. Richard D. Kendall
Mrs. Edward C. Kennard
Mrs. Robert S. Ketchum
Mrs. Arthur Kettley
Mrs. John Kill
Mrs. Gerald Klees
Mrs. John Kohl
Ms. Joanne Kosch
Mrs. Kenneth Krabbenhoft
Mrs. George Kratchman
Mrs. Jerome Krause
Ms. Bonnie Kutt

Mrs. E. Lake
Mrs. Marvin Larson
Mrs. Harold Layman
Mrs. Clyde Leaf
Mrs. Thomas Leary
Mrs. Richard Lhyle
Mrs. David Limbach
Mrs. Thomas LoCicero
Mrs. Bernard Lucas
Mrs. George Macomber
Mrs. Herb Mahne
Mrs. Ralph Mangold
Mrs. Robert W. Marquardt
Ms. Gisela Martin
Mrs. James Martin
Ms. Catherine Mather
Mrs. James M. May
Mrs. French McCain
Mrs. T. Manfred McGee
Mrs. Theodore McGee
Ms. Dorothy McKenna
Mrs. Henry McKenney
Ms. Joan Mellen
Ms. Netta Manske
Ms. Nancy Michielutti
Mrs. Larry Mitchell
Mrs. William Mitchell
Mrs. Freeman Monson
Mrs. Gerald G. Mooney
Ms. Nada Morotich
Ms. Marcia A. Motyl
Mrs. George Motzenbecker
Mrs. Robert Murray
Mrs. George Newton
Mrs. Donald Nicholise
Mrs. Ralph Norvell
Mrs. Robert S. Piper
Mrs. Henry Potoszak
Mrs. Marshall Potter
Mrs. M. C. Prottengeier
Mrs. E. L. Quinn
Dr. Gene P. Reck
Ms. Joan Reed
Ms. Donald Kemp
Mrs. Felix Resnick
Mrs. R. E. Rodriguez
Mrs. Victor Ross
Mrs. Lynn Salathiel
Mrs. Edmund Sale
Mrs. Edward Schaeffer
Ms. Caroline A. Schofield
Mrs. Harper Scott
Ms. Phyllis Scroggie
Mrs. Richard Semmel

Mrs. Robert B. Semple
Ms. Rita Seyfried
Mrs. Harvey Shuler
Ms. Nancy Skinner
Mrs. Kenneth R. Smith
Mrs. Betsy Snoke
Mrs. Harold Spencer
Mrs. Rodger Spry
Mrs. Harry Stark
Ms. Carol Sullivan
Mrs. Herbert Sullivan
Mrs. Theodore Sura
Mrs. Larry Ternan
Ms. Dolores Thomas
Mrs. Douglas Thornton
Mrs. John Thurber
Ms. Sue Ulrich
Mrs. Manuel Vandt
Ms. Lois Vazquez
Ms. Janice Veenstra
Ms. Ann Wagner
Mrs. Robert Warnica
Mrs. J. D. Wheeler
Ms. Tina Withers
Mrs. John Young
Mrs. Rudy Zabel
Mrs. Warren Zeis
Mrs. Victor Zink
Mrs. C. Lee Zwally

Rochester Meadow Brook Festival Club

CO-CHAIRMEN

Mr. and Mrs. Fred D. Houghten
Mr. and Mrs. Lawrence D. Prudhomme

COMMITTEE

Mr. and Mrs. Charles H. Allen
Mr. and Mrs. Robert Allen
Mr. and Mrs. Richard Barnwell
Dr. and Mrs. Richard Brooks
Mr. and Mrs. Clarence Cadieux
Dr. and Mrs. Peter Duhamel
Dr. and Mrs. George R. Gerber
Dr. and Mrs. James Huebner
Mr. and Mrs. Noel Huyck
Mr. and Mrs. George Matthews
Mr. and Mrs. Norman May
Mr. and Mrs. William Mitzelfeld
Mr. and Mrs. George Poffenberger
Mr. and Mrs. Ted Rosebrock
Mr. and Mrs. Frederick Thompson
Mr. and Mrs. Tom Varner

Special Thanks

Coordination of the 1976 Meadow Brook Music Festival promotional campaign by:
Campbell Ewald Company

Prizes for the Women's Ticket Sales Committee:

Suburban Travel
Michigan Opera Theatre
The E. F. MacDonald Company

MAJOR DONORS TO MEADOW BROOK — 1976

Air Monitoring Company	Handleman Company
Allied Chemical Corporation	Highland Bolt & Nut Company
American Motors Corporation	Hiram Walker Incorporated
Anonymous Gift	J. L. Hudson Company
Automotive Products Ltd.	Inmont Company
*Mr. and Mrs. Rinehart S. Bright	Jones Transfer Company
The Budd Company	*Mr. and Mrs. Edward Kaegi
Burroughs Corporation	The Lyon Foundation
Mr. and Mrs. Eugene A. Cafiero	Manufacturer's National Bank
Mr. and Mrs. Walter F. Carey	McInerney Spring & Wire Co.
Chrysler Corporation	McLouth Steel Corporation
Detroit Bank & Trust Company	Michigan Screw Products
Eaton Corporation	Michigan Wisconsin Pipeline
Federal-Mogul Corporation	Motorcar Transportation Co.
Firestone Tire & Rubber Co.	National Bank of Detroit
Ford Motor Company Fund	Pitts Industries, Inc.
*Mrs. Wallace Frost	*Mr. and Mrs. John Prepolec
*Mr. and Mrs. David L. Gamble	*Mrs. George T. Trumbull
General Motors Corporation	*Mr. and Mrs. Lynn A. Townsend
*Mr. and Mrs. Edwin O. George	Mr. and Mrs. Emmet Tracy
Goodyear Tire & Rubber Company	Mr. and Mrs. C. Theron Van Dusen
Grinnell's	White Tower Industrial Laundry

Lula C. Wilson Trust Fund

*President's Club

*We regret the omission of those names received too late for publication
The Meadow Brook Music Festival and Meadow Brook Theatre are joined administratively and the Finance Committee
conducts a joint campaign. While some contributions were specifically designated for the Theatre, they are included in
this listing in order to acknowledge them at this time.*

CONTRIBUTING SPONSORS TO THE MEADOW BROOK EXPERIENCE

Mr. and Mrs. John A. Abdo
Acme Industrial Products, Inc.
Acme Mills Company
Active Tool & Manufacturing Co.
Mr. and Mrs. Daniel M. Adams
Mr. and Mrs. Felix T. Adams
Mr. and Mrs. Thomas B. Adams
Adistra Corporation
Advance Glove Manufacturing Co.
Advanced Composite & Forging Co.
Aetna Industries, Inc.
Mr. and Mrs. W. G. Agnew
Air & Ventilation Corporation
Alfran Incorporated
Mr. and Mrs. Charles Allen
Allen Electric Supply Co.
Mr. and Mrs. John F. Allen
Mr. and Mrs. Robert P. Allen
Aluminum Company of America
Mr. and Mrs. B. Ambrosini
American Metal Industries, Inc.
American Extrusion Corporation
American Safety Equipment Corporation
American Steel Corporation
Mr. and Mrs. H. A. C. Anderson
Mr. Robert S. Anderson
Dr. and Mrs. Lee Anschutz
Apex Foundry, Inc.
Approved Manufacturing Company, Inc.
Ara Food Services Company
Dr. and Mrs. Jaime V. Aragones
Arcade Machine & Tool Co.
Mr. and Mrs. Gordon E. Areen
Ms. Jewel Arker
Aronsson Printing Co.
Arvin Industries, Inc.
Dr. and Mrs. Allan A. Ash
Mr. and Mrs. L. D. Ash
Astro-Netics, Inc.
Atlas Tool, Inc.
Atwood Automotive Division
The Austin Company
Auto City Iron & Metal Co.
Automotive Moulding
Avalon Construction Co.
B and M Industries, Inc.
Mr. and Mrs. Robert E. Backstrom
Mr. and Mrs. Doug Bain
Mr. and Mrs. James K. Bakken
Mr. and Mrs. W. E. Baldwin
Mr. and Mrs. W. Kent Barclay
Mr. and Mrs. Richard E. Barnwell
Mr. and Mrs. Richard F. Barrett
Mr. and Mrs. Tyler H. Barrett
Mr. and Mrs. Louis Barribeau
Basar and Parish, P.C.
Mr. and Mrs. Carl O. Barton
Mr. and Mrs. John C. Bates, Jr.
Batton, Barton, Durstine & Osborn, Inc.
Mr. and Mrs. Ralph N. Baughn
Bay City Foundry Company
Dr. and Mrs. William Beardmore
T. F. Beck Company
Bedford Products, Inc.
Mr. and Mrs. Ralph Behler
Mr. and Mrs. Daniel M. Bell
Mr. and Mrs. L. J. Bentley
Mr. and Mrs. Nick Berar, Jr.
Dr. Andrew H. Berry
Beta Manufacturing Corporation
Beurmann-Marshall Corporation
Mr. and Mrs. M. G. Bibbee
Mr. and Mrs. G. F. Binder
Dr. Richard Bingham
Senator and Mrs. Donald Bishop
Black Top Asphalt Paving Co.
Mr. and Mrs. Robert H. Blanford, Sr.
Mr. and Mrs. Henry G. Bleeker
Mr. and Mrs. Marvin J. Bloink
Mr. and Mrs. Lawrence B. Boensch
Mr. and Mrs. Homer W. Bohn
Mr. R. H. Bokram
Bonded Guard Services, Inc.

Mr. and Mrs. E. Bordinat, Jr.
Mr. and Mrs. Bruce Bordinat
Mr. and Mrs. Robert E. Bossee
Mr. John A. Bott
Mr. and Mrs. Robert F. Bowers
Mr. and Mrs. Frank Brady
Mr. and Mrs. Leonard Brady
Braun Engineering Co.
Mr. and Mrs. H. B. Brawner
Mr. and Mrs. Fred W. Brede, Jr.
Mr. and Mrs. Robert J. Breeden
Mr. and Mrs. Barry E. Breidenbaugh
Mr. and Mrs. J. C. Bromley
Dr. and Mrs. Richard G. Brooks
Dr. and Mrs. Donald Brown
Brown Star Products, Inc.
Dr. and Mrs. John H. Bryant
Mr. and Mrs. James Bucknerfield
Bulk Storage, Inc.
Mr. and Mrs. Joseph R. Burkhardt
Leo Burnett Company of Michigan, Inc.
Mr. and Mrs. Lester Burton
Mr. and Mrs. Dan H. Butler
Mr. Robert G. Butler
Mr. and Mrs. W. J. Buxton
Dr. and Mrs. Roger Byrd
C & W Lektra-Bat Co.
Mr. and Mrs. Clarence J. Cadieux
Mr. and Mrs. Frederick R. Caffrey
Mr. and Mrs. James W. Cagle
California Industrial Products, Inc.
Mr. and Mrs. Del Calligaris
Mr. and Mrs. Bruce O. Campbell
The Campbell-Ewald Foundation
Candon Plating Company
Mr. and Mrs. J. S. Canterbury
Capitol Transportation, Inc.
Mr. and Mrs. Everett H. Carmichael
Mr. and Mrs. J. Carroll
Don Cartage Company
Mr. and Mrs. John W. Carter
Mr. and Mrs. Simeon M. Carter
Mr. and Mrs. Robert R. Caryle
Mr. and Mrs. Felix T. Casillas
Cass Machine Company
Mr. Dave Cathcart
Mr. and Mrs. Lewis J. Cataneo
Mr. and Mrs. Louis J. Cataneo
Celanese Coatings & Specialties Co.
Chain Conveyor Division of Acco
Mr. Roy D. Chapin, Jr.
Mr. and Mrs. George Chestnut
Mr. and Mrs. Lionel M. Chicoine
Mr. and Mrs. G. T. Christiansen
Mr. and Mrs. Roy Church
City Car Releasing Company, Inc.
City Sign Company, Inc.
Mr. and Mrs. Robert W. Clark
Mr. and Mrs. Jack L. Cloud
Mr. and Mrs. Chester B. Clum
Mr. and Mrs. Avern Cohn
Mr. and Mrs. P. J. Coletta
Mr. Edward J. Collins, Jr.
Commercial Contracting Corporation
Community National Bank
Complete Auto Transit, Inc.
Condamatic Company, Inc.
Mr. and Mrs. James E. Conlan
Mr. and Mrs. Walter B. Connolly
Mr. J. E. Conway
Mr. James T. Conwell
Mr. and Mrs. Harold Cook
Dr. and Mrs. Thomas A. Cook
Mr. and Mrs. John D. Coones
Mrs. Rose Cooper
Coopers Arms
Copco Steel & Engineering Co.
Copper and Brass Sales, Inc.
Mr. and Mrs. W. C. Cotton
Mr. and Mrs. Richard P. Cottrell
The R. J. Coughlin Co.
Mr. and Mrs. Leonard E. Coyle
Mr. and Mrs. L. Keith Crissman
Dr. and Mrs. Paul Croissant
Crotty Corporation
Mrs. Merlin Cudlip
Mr. and Mrs. Joseph S. Cummins
Mr. George H. Cunard
D & F Corporation
D & K Service
DST Industries, Inc.
Mr. and Mrs. D. A. Daleiden
Dallas Industries, Inc.
Mr. and Mrs. Thomas E. Darnton
Mr. and Mrs. Charles W. Davidson
James E. Davis Company, Inc.
Davis Tool & Engineering Co.
Mr. and Mrs. T. W. Daykin
Mr. and Mrs. Harold A. Decker
Mr. and Mrs. R. W. Decker
Mr. and Mrs. Peter D. DeHamer
Delbar Products, Inc.
Mr. and Mrs. Richard E. Dellalla
DeMaria Building Co.
Mr. John J. DeMott, Jr.
Detrex Chemical Industries, Inc.
Detroit Free Press
Detroit, Toledo and Ironton
Railroad Co.
Dial Machine and Tool Company
Dietrich Industries
Mr. and Mrs. Frank A. Di Pietro
Dirksen Screw Products Company
Mr. and Mrs. V. V. Ditommaso
Doetsch Bros., Inc.
Mr. and Mrs. Thomas E. Dolan
Dominion Tool & Die Co., Inc.
Donnelly Mirrors, Inc.
Mr. and Mrs. Thomas C. Dorais
Mr. and Mrs. Robert L. Dorn
D. T. Dort
Douglas & Lomason Company
Dr. and Mrs. Benjamin W. Dovitz
Dow Chemical U.S.A.
Mr. James J. Doyle
Draftline & Binderline
Drake Enterprises, Inc.
Mr. John Drazick
Mr. and Mrs. Paul Drinkard
Dualflex Company, Ltd.
Dr. and Mrs. John Dudek, Sr.
Dr. and Mrs. John Dudek, Jr.
Dr. and Mrs. Peter A. Duhamel
Dunn & Mavis, Inc.
Mr. and Mrs. W. A. Dunning
E. I. Du Pont de Nemours & Company, Inc.
E & E Engineering, Inc.
Mr. William J. Eathorne
Dr. and Mrs. William L. Ebinger
Mr. and Mrs. John T. Eby
Mr. and Mrs. James J. Edwards
Mr. Morgan H. Edwards
Mr. and Mrs. W. W. Edwards
Mr. George R. Elges
Elliott Engineering Company
Eltec Corporation
Empire Steel Products Company
Harley Ellington Pierce Yee Associates
Mr. and Mrs. Thomas T. Enright
Mr. James T. Euwer
Mr. and Mrs. Leonard W. Evans
Excelwel Manufacturing Co., Inc.
Ex-Cell-O Corporation
Mr. and Mrs. Frank D. Faga
Mr. and Mrs. John S. Falberg
J. N. Fauver Company
Mr. and Mrs. John W. Fauver
Federal Screw Works
Ms. Doris J. Fenner
Ferro Manufacturing Corporation
Fife Electric Supply Co.
Mr. and Mrs. Warren Elroy Finken
Mr. and Mrs. Glen R. Fitzgerald
Mr. and Mrs. James B. Fitzpatrick
FitzSimons Manufacturing Company

Mr. John J. Flaharty
Fleck Oldsmobile
Fleet Carrier Corporation
Foamade Industries
Mr. and Mrs. John R. June Forbes
Ford & Earl Design Associates, Inc.
Forming Technology Company
Foster Tool & Supply Co.
Mr. and Mrs. Herman Fortunate
Mr. William Fox
Dr. and Mrs. Chester A. Francke
Mr. John L. Franey
J. A. Fredman, Inc.
Freedland Sales Company
Mr. and Mrs. William A. Freehan
Freight Consolidation Services, Inc.
Frostemp, Inc.
Fruehauf Corporation Charitable
Fund, Inc.
Mr. and Mrs. George C. Fugette
Mr. and Mrs. Andrew L. Fuller
Mr. Stephen H. Fuller
Mr. and Mrs. J. O. Futterknecht, Jr.
GP Plastics, Inc.
Gage Products Company
Gallagher-Kaiser Corporation
Mrs. West Gallogly
Mr. and Mrs. Phillip Garon
Gateway Transportation Co., Inc.
General Die Casting Co.
The General Tire Foundation, Inc.
Dr. and Mrs. George Gerber
Mr. and Mrs. William Gershenson
Mr. and Mrs. R. C. Gerstenberg
Dr. and Mrs. Michael Gilbert
Mr. and Mrs. Mohindratil S. Gill
Mr. and Mrs. Jere B. Gillette
Mr. Allan D. Gilmour
Mr. and Mrs. Joseph E. Godfrey
Mr. and Mrs. Harvey A. Gordon
Mr. and Mrs. R. C. Gorman
Mrs. Clark Gram
C. L. Grandsen & Company
Mr. and Mrs. Wallace D. Grant
Mr. and Mrs. Serge Gratch
Great Lakes Forgings (1974) Ltd.
Mr. J. C. Green
John E. Green Plumbing & Heating Co.
Mr. and Mrs. George W. Griffith
Mr. and Mrs. James H. Grommersch
Grow Chemical Co.
Gulf & Western Manufacturing Co.
Mr. and Mrs. Gordon A. Guthrie
Mr. Robert R. Gutierrez
Mr. and Mrs. Donald Hacker
J. Lee Hackett Company
Mr. and Mrs. Arthur D. Hafke
Mr. and Mrs. Dwight L. Hagedorn
Mr. Walter Hajicek
Hall Company
Dr. and Mrs. Arch H. Hall
Mr. and Mrs. Douglas J. Hall
W. Reid Halla
Mr. and Mrs. Wm. J. Hamel
Dr. and Mrs. William Hardy
Mr. and Mrs. E. T. Harrington
Mr. and Mrs. Robert G. Harrington
Mr. and Mrs. Daniel J. Harris
Ms. Mary D. Harris
Mr. and Mrs. William W. Harris
Mr. Gerald E. Hart
Mr. and Mrs. F. Leo Hassett
Mr. and Mrs. Robert E. Hatfield
Hawthorne Metal Products Co.
Mr. and Mrs. Donald C. Hayden
Mr. and Mrs. Raymond E. Hayes
Mr. and Mrs. J. D. Head
Header Foundation
Hedblom Industries, Inc.
Mr. and Mrs. Paul A. Heinen
Mr. and Mrs. Leonard J. Heinle
Dr. and Mrs. Edward Hendershott
Dr. Worth W. Henderson

CONTRIBUTING SPONSORS TO THE MEADOW BROOK EXPERIENCE

Mr. John D. Henkel
W. E. Hennels Co., Inc.
Hess Cartage Company
Mr. and Mrs. F. F. Hilder
Mr. and Mrs. David Hiller
Mr. and Mrs. John A. Himmelspach
Mr. and Mrs. Jerry R. Hines
Mr. and Mrs. James C. Hitchcock
Mr. and Mrs. Paul E. Hitch
Mr. William J. Hitter
Mr. and Mrs. John G. Hoagland
Mr. and Mrs. Henry E. Hockeimer
Mr. and Mrs. Ed Hodowaine
Mr. and Mrs. William E. Hoglund
Marvin Hole Company
Mr. and Mrs. Dan S. Holfca
Holley Carburetor
Mr. and Mrs. W. E. Holt
Mr. George L. Hooper
Mr. Jack W. Hooper
Mr. and Mrs. George E. Hooton
Mr. and Mrs. Z. Louis Horvath
Mr. and Mrs. Fred D. Houghten
Ms. Patricia Houtz
Howell Industries, Inc.
Mr. and Mrs. James S. Hudgens
Dr. and Mrs. James Huebner
Frank Huff Associates, Inc.
Hughes and Hatcher, Inc.
Mr. and Mrs. Kenneth Hulsing
Mr. and Mrs. Jack N. Humbert
Dr. and Mrs. Douglas Hurd
Huron Valley Steel Corporation
Mr. and Mrs. Thomas E. Husted
ITT Thompson Industries - Metals Div.
Incoe Corporation
Industrial Fuels Corporation
Industrial Smelting Company
Inland Air Ltd.
International Business Machines Corp.
International Cartage, Inc.
International Industrial Contracting
Corp.
International Telephone and Telegraph
Interstate Mfg. Corp.
J. I. C. Electric, Inc.
Mr. and Mrs. Harold C. L. Jackson, Jr.
F. L. Jacobs Co.
Mr. and Mrs. G. E. Jaquillard
Jay Electric Co.
Mr. and Mrs. John O. Jay
Mr. and Mrs. S. D. Jeffe
Mr. and Mrs. Reuben R. Jensen
Mr. Richard J. Jessup
Mr. and Mrs. George H. Johnson
Mr. and Mrs. William D. Johnson
Mr. and Mrs. Charles M. Johnston
Mr. and Mrs. Thomas B. Johnston
Mr. and Mrs. James T. Jones
The David J. Joseph Company
Mr. and Mrs. Richard W. Judy
Mr. and Mrs. Jack E. Kahle
Albert Kahn Associates, Inc.
Mr. and Mrs. Austin A. Kanter
Mr. and Mrs. Sidney J. Karbel
Mr. and Mrs. E. R. Karrer
Kasle Steel Corporation
Mr. and Mrs. Charles Katko
Mr. and Mrs. John P. Kavooras
Kaye Steel Corporation
Mr. and Mrs. B. J. Kearney
The Keeler Fund
Mr. and Mrs. Howard H. Kehrl
Mr. and Mrs. Donald L. Kelly
Mr. Edward C. Kennard
Kent-Moore Foundation
Kenwal Products Corporation
Mr. and Mrs. Robert L. Kessler
Key International, Inc.
Keystone Metal Moulding Company
Mr. and Mrs. Martin S. Kilsdonk
Mr. and Mrs. Ian Kiltie
Mr. and Mrs. Nelson Kimball

Mr. Herbert King
Mr. and Mrs. James King
Mr. and Mrs. Paul J. King
Mr. and Mrs. D. J. Kinsbury
Kingsley Inn, Inc.
Dr. and Mrs. V. Everett Kinsey
Mr. and Mrs. Charles D. Kitz
Mr. and Mrs. Maurice Klein
Mr. Neil B. Klein
Mr. and Mrs. Robert B. Kleinberg
Mr. and Mrs. N. E. Koch
Mr. and Mrs. Kenneth K. Kohrs
Mr. and Mrs. Arthur Kollin
Koltanbar Engineering Company
Mr. and Mrs. Donald F. Kopka
Korreck Manufacturing, Inc.
Mr. and Mrs. R. A. Krentz
Mr. and Mrs. Bruce Kresge
Mr. and Mrs. William H. Kroman
Mr. and Mrs. Roland W. Kueber
Dr. and Mrs. Albert Kuhn
Dr. and Mrs. Robert E. Kuhn
Dr. and Mrs. Carl Kuntzman
Kurtz Steel
Mr. and Mrs. Thomas G. Kuzma
Mr. and Mrs. A. F. La Barge
Mr. Robert Laile
Lake Center Industries
Lake Sales Co.
F. Jos. Lamb Company
Mr. and Mrs. B. J. Lamp
Mr. and Mrs. Philip S. Lang
Mr. and Mrs. Kerry L. Langdon
Mr. and Mrs. Stephen Lanyi
Mr. and Mrs. William Larson
Mr. and Mrs. George D. Latimer
Mr. and Mrs. R. T. Lawrie
Mr. and Mrs. Robert Lay
Mr. and Mrs. Robert C. Leary
Mr. and Mrs. Elwood E. Leathley
Mr. and Mrs. Max Lebowitz
Mr. and Mrs. Wm. H. Leckie
Mr. and Mrs. W. C. Lee
Mr. and Mrs. James M. Leighty
Mr. and Mrs. Ronald K. Leirvik
Mr. and Mrs. Benjamin L. Lemmer
Mr. and Mrs. Warren R. Lepp
Mr. and Mrs. Edward H. Lerchen
Edward C. Levy Company
Mr. and Mrs. Derek C. Lewis
Libbey-Owens-Ford Company
Liberty Tool & Engineering Corp.
Dr. and Mrs. Harry E. Lichtwardt
Mr. and Mrs. D. H. Lind
Lindell Drop Forge Company
Mr. and Mrs. M. F. Littell
Little & David Machine Co., Inc.
Mr. and Mrs. Richard E. Loeding
Mr. and Mrs. Raymond L. Logue
Dr. J. E. Lohrer
Mrs. Margaret Lohrer
Mr. Walter R. Lohrer
Mr. and Mrs. H. Nelson Long
Long Transportation Co.
Mr. Victor A. Long
Mr. and Mrs. Alan Loofbourrow
Mr. and Mrs. Robert D. Loomis
Mr. and Mrs. Richard F. Lucas
Mr. and Mrs. W. V. Luneburg
Mr. and Mrs. Fred Lyijynen
M & G Convoy
Mr. Benard L. Maas
Mr. and Mrs. Harold C. MacDonald
Mr. and Mrs. W. D. MacDonnell
Mr. and Mrs. Harlan L. MacDowell
Harris O. Machus Enterprises
Mr. and Mrs. Fred Mack
Mr. and Mrs. Theodore H. Macke, Jr.
Mr. Colin A. Mackenzie
Madison Electric Company
Mr. and Mrs. R. F. Mahon
Dr. and Mrs. Frederick Maibauer, Jr.
Mr. and Mrs. Alex C. Mair

Mr. and Mrs. Robert E. Mallman
Mr. and Mrs. Stephen P. Malone
Mr. and Mrs. Robert C. Mange
Mr. and Mrs. Irwin Maniloff
Dr. and Mrs. John Manning
Mr. and Mrs. John Manon
Mr. and Mrs. John A. Manoogian
Manor Industries, Inc.
Mr. and Mrs. Jacques R. Maroni
Marion Tool & Manufacturing
Mr. and Mrs. Richard W. Marr
Mr. and Mrs. Philip D. Marriner
Dr. and Mrs. Gordon Marsa
Martin Foundries Company
Mr. and Mrs. Roscoe Martin
Marx Manufacturing Corp.
Mary Jane Flowers - Mr. and Mrs.
Richard Potts
C. H. Masland & Sons
Mr. and Mrs. Frank H. Mason
Master Craft Engineering
Ms. Donna J. Mastin
Material Handling Parts Co.
Mr. and Mrs. George Matthews
Mr. Earl A. Maxwell
Mr. and Mrs. Jack E. Maxwell
Mr. and Mrs. Thomas A. Maxwell
Mr. and Mrs. Norman E. May
E. F. Mayne-Paul M. McKenney
Dr. and Mrs. Thomas J. McBryan
McCord Corporation
Mr. and Mrs. Newell H. McCuen
Mr. and Mrs. J. W. McCuiston
Dr. Sue Ann McCutcheon
Mr. and Mrs. Thomas S. McDaniel
Mr. and Mrs. James McDonald
Mr. and Mrs. F. James McDonald
Mr. and Mrs. J. L. McIngerney
McIntosh Corporation
Mr. and Mrs. Robert L. McKee
Mr. and Mrs. Alexander C. McKeen
Mr. and Mrs. Sidney F. McKenna
Mr. and Mrs. James D. McKinnon
Mr. and Mrs. John W. McKinnon
The McLaughlin Co.
McMullen Tool Supply Co.
Mr. and Mrs. William A. McNamee
Mr. and Mrs. Waldo E. McNaught
Mr. Jack McNulty
Mr. Stuart B. Meach
Mr. and Mrs. Michael C. Meehan
Mr. and Mrs. Paul E. Menke
Mercier Corporation
Mercury Plastics Company
Merit Stainless Steel, Inc.
Mr. Rocco V. Messina
Mr. and Mrs. Robert H. Metals
Mr. and Mrs. Wayne Michelson
Michigan Abrasive Company, Inc.
Michigan Rivet Corporation
Mr. Edgar O. Miller
Dr. and Mrs. Michael Miller
Mr. Robert L. Miller
Mr. and Mrs. Robert R. Miller
Mr. James C. Millies
Mr. and Mrs. Thomas W. Miner
Mr. and Mrs. H. L. Misch
Mr. and Mrs. William L. Mitchell
Dr. and Mrs. Moufid Mitri
Mitsubishi International Corporation
Mitsui & Co., Inc.
Mr. and Mrs. William Mitzelfeld
Mr. John A. Moekle
Mr. Pete Moeller
Mr. and Mrs. R. F. Mohan
Mr. and Mrs. John A. Mollica
Mr. and Mrs. Douglas Monks
Montgomery Elevator Company
Mr. Joseph W. Moon
Mr. and Mrs. Albert C. Moore
Mr. and Mrs. John T. Moren
Mr. Earl L. Morgan
Mr. and Mrs. William Morgan

Mr. and Mrs. George B. Morris, Jr.
R. D. Morrison
Morrow Steel Company
Mr. and Mrs. Ernest C. Moser
Motion Savers, Inc.
Mr. and Mrs. John F. Mueller
Dr. and Mrs. Arthur B. Mulso
Murdock Machine Co.
Mr. and Mrs. T. A. Murphy
Mr. Owen S. Murray
Mr. and Mrs. Wm. R. Murray
Mr. and Mrs. E. Michael Mutchler
Mr. and Mrs. Albert F. Myers
Mr. and Mrs. William L. Myers
J. E. Myles, Inc.
Mr. Herman D. Mysing
Mr. and Mrs. Tibor F. Nagey
National Rubber Company Limited
National Transit Corporation
National Twist Drill & Tool Co.
Mr. and Mrs. Lester T. Neiman
Mr. and Mrs. Austin A. Nelson
New Haven Foundry
Mr. & Mrs. Wallace Newton
Mr. and Mrs. Glendon L. Nicolin
Mr. Henry F. Noonan
Mr. and Mrs. R. T. Noonan
Miss Marguerite Novelli
Mr. Benjamin Nucian
Oakland Tool & Manufacturing Co.
Mr. and Mrs. James E. O'Boyle
Ogden Food Service Corporation
Ogden & Moffett Company
Mr. and Mrs. A. Oh
Mr. and Mrs. H. Richard O'Hara, Jr.
C. S. Ohm Mfg. Company
Mr. and Mrs. Andrew V. O'Keefe
Mr. and Mrs. J. Oldham
Oliver Supply Co.
Mr. and Mrs. Albert T. Olson
Mr. and Mr. Michael G. Orlovich
Mr. and Mrs. F. Osann, Jr.
Mr. Bradley D. Osgood, II
Mr. and Mrs. Max Osnos
Mr. and Mrs. Fred A. Otto
Overhead Conveyor Co.
Oxbow Machine Products
Mr. and Mrs. Carl J. Oxford
P. C. I. Corporation
PPG Industries Foundation
P. T. Standard Parts Company
Mr. and Mrs. Ivan E. Packaro
Mr. Thomas C. Page
Mr. and Mrs. Richard H. Palmer
Mr. and Mrs. Emory H. Parke, Jr.
Mr. and Mrs. Edward Patricelli
Mr. and Mrs. A.D. Peirce
Mr. and Mrs. Paul E. Peirce
Mr. and Mrs. Paul D. Pender
Peninsular Wire & Cable Co., Inc.
Mr. and Mrs. John C. Peppler
Perfect Mfg., Inc.
Perfection Pattern & Mfg. Co.
Mr. and Mrs. Edward H. Perkins, Jr.
Mr. and Mrs. Donald E. Petersen
Mr. and Mrs. Robert Petersen
Mr. and Mrs. John Peterson
Mr. and Mrs. Thomas J. Peterson
Mr. and Mrs. Mark A. Petrino, Jr.
Pettibone Michigan Corporation
Mr. and Mrs. Earl J. Phillips
Mr. Melvin Pillon
Pine Design Engineering &
Manufacturing Co.
Mr. and Mrs. Joel H. Pitcoff
Pivot Manufacturing Company
Mr. and Mrs. Don G. Pixley
Place Machine Corp.
Mr. and Mrs. A. F. Platt
Mr. and Mrs. David R. Platt
Mr. and Mrs. Robert L. Plummer
Mr. and Mrs. H. L. Pocklington
Mr. and Mrs. George Poffenberger

CONTRIBUTING SPONSORS TO THE MEADOW BROOK EXPERIENCE

Mr. and Mrs. Arthur Pohutsky
Mr. James L. Pollak
Pontiac Coatings Div. - Grow Chemical Co.
Pontiac Travel Service, Inc.
Mr. Darrah C. Porter
Dr. Harold Portnoy
Mr. and Mrs. Paul E. Prill
Progressive Tool & Industries Co.
Mr. and Mrs. Irvin Prudhomme
Mr. and Mrs. Lawrence C. Prudhomme
Mr. and Mrs. R. Richard Prudhomme
Pullman Industries, Inc.
Mr. and Mrs. Anthony E. Purman
Mr. and Mrs. Roger Pyett
Quality Screw Products, Inc.
Mr. and Mrs. N. J. Rakas
Mr. and Mrs. John T. Rausch
Reed Electric Company
Mr. and Mrs. Stuart M. Reed
Reef Industries Division
Refrigeration Service, Inc.
Dr. and Mrs. Al Reidinger
Mr. and Mrs. Lloyd E. Reuss
Rexnord, Inc.
Reynolds Metals Company
Mr. and Mrs. John Ricca
Mr. and Mrs. Donald E. Richard
Mr. Stanley T. Richards
Mr. and Mrs. F. O. Riley
Mr. and Mrs. James T. Riley
Ring Screw Works
Drs. Ulrich and Barbara Ringwald
Mr. and Mrs. Maurice Ripard
Dr. and Mrs. Eduardo Rivera
Riverside Mfg., Inc.
Mr. and Mrs. Mayford L. Roarch
Mr. and Mrs. John M. Roberts
Mr. and Mrs. M. M. Roberts
Greater Rochester Chamber of Commerce
Dr. and Mrs. Harold P. Rodes
Mr. and Mrs. Richard G. Roeder
D. E. Rose & Associates Corp.
Mr. and Mrs. Theodore L. Rosebrock
Mr. and Mrs. G. Kent Rosenquist
Mr. and Mrs. Louis R. Ross
Rossetti Associates
Mr. and Mrs. Ross Roy
Mr. and Mrs. William D. Route
Mr. and Mrs. Marvin T. Runyon
Mr. and Mrs. F. Rush
Mr. and Mrs. Richard O. Ruppel
S.W.E., Inc.
St. Clair Rubber Company
Dr. and Mrs. Karl Sattman
Dr. and Mrs. Stanley R. Saul
Mr. and Mrs. Gerhard G. Schamp
Mr. and Mrs. Harry E. Scharf

Mr. and Mrs. Austin E. Schimmel
Schläfer Iron & Steel Company
Mr. and Mrs. Paul W. Schmidt
Mr. and Mrs. William E. Schulenberg
A. Schulman, Inc.
Mr. and Mrs. Ernest J. Schwartz
Mr. and Mrs. Julius Schwartz
Schweitzer Industrial Corp.
Mr. and Mrs. J. L. Scicluna
Mr. and Mrs. Donald J. Scott
Mr. and Mrs. Kenneth N. Scott
Mr. and Mrs. Max E. Secaur
Seidman and Seidman
Mr. and Mrs. George J. Seifert
Dr. David Seligson
Mr. and Mrs. Robert B. Semple
Mr. and Mrs. James W. Shank
Mr. and Mrs. Nathaniel Share
Mr. and Mrs. Stephan Sharf
A. F. Shaw Assoc., Inc.
Mr. and Mrs. Thomas E. Sheehan
Sheller-Globe Corporation
Mr. and Mrs. Arnold Sherman
Mr. Edwin Shifrin
Hon. & Mrs. Robert Shipper
Shippers Dispatch, Inc.
Lear Siegler, Inc.
Ms. Rosetta Silverman
Mr. and Mrs. Hugh R. Simmonds
Mr. and Mrs. Darwin G. Simpson
Simpson Industries, Inc.
Mr. and Mrs. William R. Slattery
Mr. Weldon D. Smiley
Mr. and Mrs. F. Alan Smith
Mr. and Mrs. George W. Smith, III
Mr. and Mrs. Harold L. Smith
Smith, Hinchman & Grylls Associates, Inc.
Mr. and Mrs. Roger B. Smith
Mrs. Carl J. Snyder
Solar Machine Products Co.
Mr. Herbert Sott
Mr. and Mrs. David M. Sparling
Spina Electric Co.
Mr. and Mrs. S. H. Spindler
Standard Lead Company
Dr. and Mrs. William Stanley
Mr. and Mrs. R. W. Stapleton
Mr. Frank J. Starr
Mr. and Mrs. Noel E. Stasel
Mr. and Mrs. James E. Steele
Stegman Tool Co., Inc.
Mr. and Mrs. Robert C. Stempel
Mr. and Mrs. Bruce Stevens
Mr. John V. Stewart
Stinson-Peters Construction Company
Mr. and Mrs. Stephen Stolaruk
Mr. and Mrs. Robert B. Stone
Mr. and Mrs. Roger J. Storves

Mr. and Mrs. Marvin W. Stucky
Suburban Travel
Mr. and Mrs. Peter J. Sullivan, Jr.
Mr. Robert P. Sullivan
Superior Welding & Press Repair Co.
Mr. and Mrs. John B. Sutherland
Mr. and Mrs. Benjamin R. Sweeney
Mr. and Mrs. Leonard F. Swoyer
TRW, Inc.
Taylor & Gaskin, Inc.
Taylor Supply Company
Mr. and Mrs. Walter H. Teninga
Mr. and Mrs. Lawrence R. Ternan
Mr. and Mrs. Sydney L. Terry
Textile Trim, Inc.
Thomas Die and Stamping, Inc.
Mr. and Mrs. Grant T. Thomas
Thomas & O'Connell, Inc.
Mr. and Mrs. Robert F. Thomson
Mr. and Mrs. Frederick Thompson
Mr. Paul A. Thorlakson
Thysen Metal Service- Detroit Corp.
The Timken Company
Mr. and Mrs. James E. Tobias
Mr. James Tolley
Mr. and Mrs. John Topper
Mr. and Mrs. Peter Tottis
Mr. and Mrs. Harold R. Townsley
Mr. and Mrs. A. W. Tramel
Trans Tube, Inc.
Transign, Inc.
Tremec
Mr. and Mrs. Samuel Trevathan
Triangle Electric Co.
Trim Trends, Inc.
Mr. and Mrs. William C. Turland
The Tuschman Steel Co.
Mr. and Mrs. Howard Tuttle
Mr. and Mrs. H. Blair Tyson
USM Corporation
Uniroyal, Inc.
U.S. Pool Car, Inc.
United States Fastener Corp.
Universal Gear Service Corp.
University Opticians
Uptill, Inc.
The Valeron Corporation
R. A. Van De Velde & Associates
Mr. and Mrs. Thomas Varner
Mr. and Mrs. Bill Vedouras
Mr. and Mrs. Richard A. Vining
Mr. and Mrs. J. G. Vorhes
Mr. and Mrs. Stanley Vranesh
Mr. and Mrs. Robert V. Wagner
Mr. and Mrs. Jack J. Wainger
Walbridge Aldinger
Walco Enterprises, Inc.
Lallie Walker

Walker Manufacturing
Mr. Walter S. Walla
Mr. and Mrs. Richard T. Walsh
Warfield Corporation
Mr. Carl Warnock
Mr. and Mrs. C. A. Weagraff
Wean United, Inc.
Jervis B. Webb Company
Sidney Weinberger Homes, Inc.
Welding Metals, Inc.
Dr. Gerald F. Wery
Mr. and Mrs. James T. West
Mr. and Mrs. R. Weston
Westvaco Container Division
Mr. Kenneth A. Wheeler
Mr. Walter A. Wheeler
Dr. and Mrs. Daniel White
Mr. and Mrs. Glen White
Mr. and Mrs. Gordon S. White
Whittaker Corporation-Fastener Products Div.
Mr. and Mrs. Thomas G. Whittingham
Wico Metal Products
Mr. and Mrs. J. H. Wilberding
Wilhelm Engineering Company
Mr. and Mrs. Norman E. Wilhelmssen
Mr. and Mrs. E. L. Williams
Mr. and Mrs. Larry R. Williams
Mr. Paul P. Williams
Mr. and Mrs. F. J. Winchell
Mr. and Mrs. Isadore Winkelman
Mr. & Mrs. Stanley J. Winkelman
Winkelman Stores, Inc. Foundation
Mr. and Mrs. J. D. Wisner
Mr. and Mrs. Conrad Wojciechowski
Woj'ski Incorporated
The Wolf Detroit Envelope Company
Mr. and Mrs. Roy Wolf
Wolf Sanitary Wiping Cloth Co., Inc.
Mr. and Mrs. Nello B. Wolford
Wolverine Stamping Company
Mr. R. W. Wolverton
Mr. and Mrs. Michael R. Wood
Woodal Division, LOF Plastics, Inc.
Woodline Tool Corporation
Mr. and Mrs. Mack W. Worden
Mr. L. H. Wulfmeier
York Division - Borg Warner
R. A. Young Industries, Inc.
The Young & Rubicam International, Inc.
Mr. and Mrs. William J. Young
The Youngstown Steel Products Company of Michigan
Mr. and Mrs. Anthony Zar
Mrs. Toni Zenner
Mr. and Mrs. Eugene J. Zepp
Mr. and Mrs. Victor M. Zink

We regret the omission of those names received too late for publication

The Meadow Brook Music Festival and Meadow Brook Theatre are joined administratively and the Finance Committee conducts a joint campaign. While some contributions were specifically designated for the Theatre, they are included in this listing in order to acknowledge them at this time.

Kresge Foundation

The Meadow Brook Executive Committee expresses its appreciation to one of its most important benefactors, The Kresge Foundation. In 1964 when the Festival was a dream, The Kresge Foundation made a \$76,000 gift to the capital fund in memory of civic leader and foundation trustee, Howard C. Baldwin. The Pavilion is named in his honor. A second gift of \$50,000 a year later made possible the permanent seating in the Pavilion. Subsequently, The Foundation provided an additional capital grant of \$330,000 to improve the Festival's performing capabilities. The gift added dressing rooms below stage, new electrical circuits, and a fine sound reinforcement system for the popular programs. New rest rooms recently completed south of Baldwin Memorial Pavilion replace the backstage facilities, and recontoured south and north lawn areas expanded the Festival's seating capacity. The continued generosity of The Kresge Foundation enabled us to improve the stage-house rigging, utilization of back-stage space, as well as several other technical operations.

INDEX TO ADVERTISERS

Thirteenth Annual Meadow Brook Festival Program

ABC-TV.....	4	Helm, Inc.....	116
AC Delco Division	10	Hercules, Inc.....	106
Adistra Corporation.....	132	Houdaille Industries, Inc.....	130
Alexander & Alexander	120	Huttenlochters Kerns & Norvell	28
Alvin's.....	135	Indian Head.....	Inside Back Cover
American Motors Corporation	16	ITT Higbie Mfg. Co.....	40
Automatic Die Casting Specialties	131	Jacobson's	107
Averill Press	112	Kelsey-Hayes Company	19
BASF Wyandotte	116	Kingsley Inn	135
BBD&O.....	104	F. Joseph Lamb Co.....	8 & 9
Bedell's Restaurant.....	131	Lincoln-Mercury Division.....	Inside Front Cover
Jack Bott Sales.....	126	Machus Restaurants	120
Bottle & Basket of Birmingham	131	Masako Kondo Flowers & Gifts	135
F. J. Boutell Driveaway	132	Meadow Brook Art Gallery	48
Brass Lamp Restaurant.....	127	Meadow Brook Hall.....	48
The Budd Company	21	Meadow Brook Theatre	88
Buick Motor Division	129	Michigan National Corporation	128
Leo Burnett Company of Michigan	39	McCann Erickson	115
Burrough's Corporation	32	McCord Corporation	38
CBS	18	National Bank of Detroit	11
Cadillac Motor Division	43	National Steel Corporation	15
Chevrolet Motor Division	Back Cover	National Twist Drill & Tool	113
Chrysler Marine Division	45	Newsweek	114
Chrysler-Plymouth "Arrow"	5	Oakland University Department of Music	131
Chrysler-Plymouth "Cordoba"	94	Oceania Inn	130
Clayton Manufacturing	127	Oldsmobile Division	7
Cogsdill Tool Products	126	Perry Drug Stores	127
Community National Bank	118	Pontchartrain Hotel	127
Crowley's	133	Pontiac Motor Division.....	90
Dana Corporation	14	PPG Industries	42
D'Arcy MacManus & Masius	33	Reader's Digest	109
Detroit Bank & Trust	116	Rip's Restaurant	133
The Detroit News	110	Rockwell International	117
Detroit Symphony Orchestra	123	Ross Roy, Inc.....	122
Display & Exhibit Company	124	Shalea Inn	126
Dodge Division "Aspen Wagon"	24	Sheller-Globe	111
Dodge Division "Colt"	136	B. Siegel.....	119
Eaton Corporation	105	Somerset Inn-Somerset Mall	108
Elias Bros. (Ponmet)	125	J. Walter Thompson.....	125
Firestone Tire & Rubber Co.	93	Time	36
First Federal Saving & Loan	135	TRW	92
Fisher Body Division	126	Mr. & Mrs. Emmett E. Tracy	132
Ford Motor "Corporate"	102	UAW	30
Ford Motor "Granada"	121	Union Carbide	44
Ford Motor "Parts & Service"	101	Uniroyal	96
Gail & Rice	133	U. S. M. Corporation	1
General Motors "Corporate"	26	U. S. Steel Corporation	6
General Tire & Rubber Co.	20	Janet Varner's	130
Georgian Court of America, Inc.....	124	WDET-FM Radio	124 & 130
GMC Division	12	Weir, Manuel, Snyder & Ranke	120
B. F. Goodrich Tire & Rubber Co.	125	Wiggs.....	122
Goodyear Tire & Rubber Co.	2	WNIC-Radio.....	133
Grinnell's	34	Young & Rubicam	37
Handleman Company	122		