



Meadow Brook Theatre To Open Season January 4

The John Fernald Company of the Meadow Brook Theatre will open its premiere season on January 4 with its production of Bertolt Brecht's "Caucasian Chalk Circle." Under the direction of John Fernald, one of the world's leading theatrical figures, the professional company of 22 actors and actresses will bring to Michigan its first permanent resident company in a much-heralded program of six plays, running through May 28.

Representing Oakland University's latest venture in the performing arts, the Theatre will be followed next year with the establishment of an academy of dramatic art. The announcement last summer ended weeks of speculation about where Fernald, former head of England's famed Royal Academy of Dramatic Art, would locate his academy and company in this country.

Following his arrival in September, Fernald conducted auditions in New York, the West Coast, and locally before identifying his company, most of whom are American actors trained at the Royal Academy. Members of the company arrived in mid-November for rehearsals, and most are housed in mobile homes, located on campus to provide housing near the theatre.

Premiere Season

The Caucasian Chalk Circle by Bertolt Brecht
January 4 through January 29
Love's Labor's Lost by William Shakespeare
February 1 through February 26
You Never Can Tell by George Bernard Shaw
March 1 through March 26
Imperial Nightingale by Nicholas Stuart Gray
March 27 through April 2
(not in season tickets)
The Waltz of the Toreadors by Jean Anouilh
April 5 through April 30
The Three Sisters by Anton Chekhov
May 3 through May 28

Performances will begin at 8:30 p.m. on Wednesday, Thursday, Friday, and Saturday nights; at 6:30 p.m. on Sundays; and at 2:30 p.m. on Saturdays. Season tickets for the evening performances are \$20, \$15, and \$10; \$15, \$10 and \$6 for matinees. Call 962-0353 or 338-6239 for season tickets or for single ticket information.

Community leadership for the Theatre has been under the chairmanship of Mr. and Mrs. Charles F. Adams. Co-chairmen are Mr. and Mrs. Robert Anderson, Mr. and Mrs. John DeLorean, Mr. and Mrs. Benson Ford, Mr. and Mrs. Joseph Nederlander, and Mr. and Mrs. Alan Schwartz. Mr. and Mrs. Harry N. Wieting head the ticket committee, and Mrs. Alfred G. Wilson and Mrs. George Romney are honorary co-chairmen.



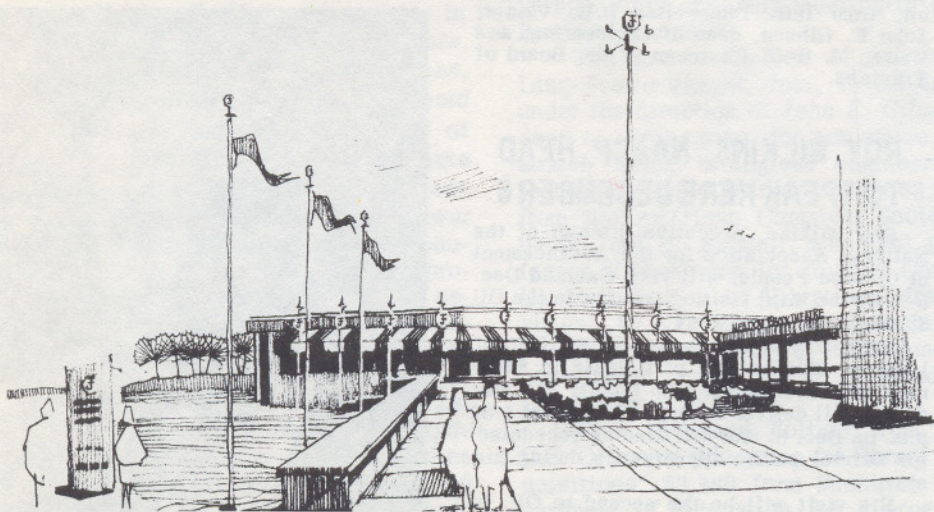
JOHN FERNALD

FERNALD BRINGS IMPRESSIVE BACKGROUND IN THEATRE

John Fernald, who will serve as director of the John Fernald Company, brings to this new dramatic program an impressive background in the world of theatre.

As head of England's famed Royal Academy of Dramatic Art for 10 years, he helped to shape the careers of such notable performers as Peter O'Toole, Albert Finney, Rosemary Harris, Sir John Gielgud, Susannah York, and the late Charles Laughton. He has more than 300 London productions to his credit, and in 1962 directed the Broadway production of C.P. Snow's "The Affair."

Fernald is dedicated to the concept of a resident theatre company. He is convinced that the greatness of the theatre is found in the performer, the company, and the play, and it is his objective to assemble for the Meadow Brook Theatre a talented and committed company who will work as a unit in the presentation of great drama.



An architect's rendering shows the theatrical banners that will line the approach to the Meadow Brook Theatre.

Begin \$5 Million Dodge Hall Of Engineering

Dodge, a magic name in the history of auto-making was honored at Oakland University on November 3, when University officials and community dignitaries broke ground for OU's \$5 million engineering building, to be named the Dodge Hall of Engineering.

Officiating at the 4:30 p.m. ceremony, OU Chancellor D.B. Varner told an audience of faculty, students, and off-campus visitors that the new facility would "memorialize the great accomplishments of automobile pioneers John F. Dodge and Horace E. Dodge."

Varner cited the modest beginning of the Dodge enterprise, their rapid climb to success, and their major contribution to Detroit's position as the auto capital of the world. "I am certain that the name Dodge will be an inspiration to young men of the future who will study here and go on to become pioneers — not in auto-making, but in computer science, space research, or other exotic fields not yet known to us in the sixties."

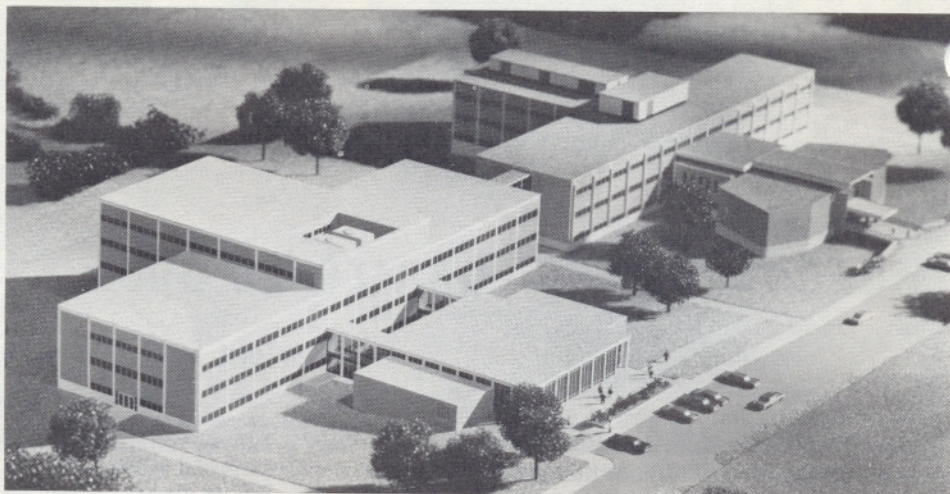
He noted that the 1400-acre estate given to establish the University in 1957, was formerly the John F. Dodge estate. Matilda R. Wilson, who was Mrs. John F. Dodge for 13 years prior to his death in 1920, remarried in 1925 to Alfred G. Wilson. The Wilsons made a gift of the estate and \$2 million for the new institution which opened in 1959.

Mrs. Wilson is residing in Meadow Brook, located on the estate, and Mrs. Horace E. Dodge resides in Grosse Pointe.

The Dodge Hall of Engineering, designed by the architectural firm Odell, Hewlett, and Luckenbach, Inc., of Birmingham, will be completed in the spring of 1968.

A four-story structure, it will be located just east of the University's Science Building, and connected to it by glass-enclosed corridors. It will house the School of Engineering and the department of biology.

State funds for the project total \$3,620,000. In federal funds, \$1,000,000 will come from the Office of Education, under the Higher Education Facilities Act, and \$380,000 from the National Institutes of Health. Bids were approved by the Michigan State Board of Trustees this month, and construction will begin immediately.



Ground was broken November 3 for the \$5 million Dodge Hall of Engineering, named in memory of automotive pioneers John F. Dodge and Horace E. Dodge. The new building is shown at left in the architects' model, in relationship to the Science Building.



Heavy snow did not slow Mrs. Wilson's enthusiasm for ground breaking. Looking on, from left, Chancellor D.B. Varner; John E. Gibson, dean of engineering; and Warren M. Huff, Chairman of the Board of Trustees.

FALL ENROLLMENT 3,142

Fall enrollment reached 3,142 at OU when students swarmed to the campus for the opening of the fall semester. The new figure represents an increase of 676 students, or 27 percent, over the 2,458 students enrolled last year at this time.

The increase is the largest experienced at OU, which had 570 students for the first classes in 1959. A major reason for the growth is the large number of new students enrolling at OU for the first time. First-time freshmen numbered 1,037 and transfers 337.

Other statistics show that women outnumber men, 1,668 to 1,472. A total of 2,945 represent some 57 Michigan counties, 179 come from 27 other states, and 18 from six other countries.

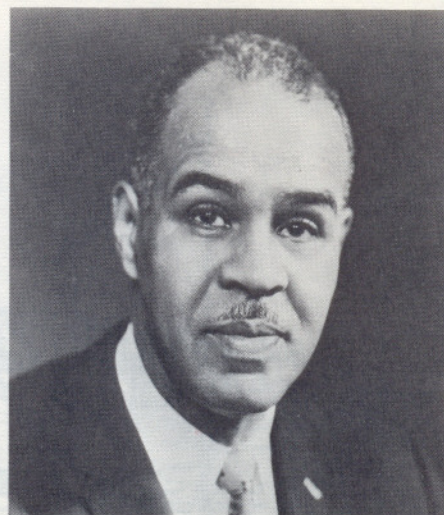
The Oakland University News will be published bimonthly from October through May by Oakland University.
Editor, Troy F. Crowder.

ROY WILKINS, NAACP HEAD TO SPEAK HERE DECEMBER 6

Roy Wilkins, executive director of the National Association for the Advancement of Colored People, will visit Oakland Dec. 5-7, as the third visiting lecturer in the OU Speakers Series 1966-67.

Appearing at OU as the Sidney Hillman lecturer, Wilkins will participate in seminars and discussions with faculty and students; will deliver a campus lecture at 1:30 p.m. on Dec. 6, and will also be scheduled for several public appearances during his stay.

His visit will be the second to OU. In 1965 the University awarded him an honorary degree at the spring commencement.



ROY E. WILKINS

Faculty & Staff Notes

Fifty-nine new faculty members were added to Oakland University for the beginning of the fall semester. They include (listed alphabetically):

Saghir Ahmad, instructor of sociology; *Charles W. Akers*, professor of history; *Jon H. Appleton*, instructor in music; *E. Harold Bennett*, specialist in reading; *David B. Booth*, associate professor of sociology; *Eleutherios N. Botsas*, assistant professor of economics; *Louis R. Bragg*, professor of mathematics; *David C. Bricker*, instructor in education; *Louis M. Buchanan*, instructor in English; *Francis M. Butterworth*, assistant professor of biology; *Nguyen Phuong Cac*, assistant professor of mathematics; *Harold C. Cafone*, assistant professor of teacher education; *Thomas W. Casstevens*, assistant professor of political science; *F. James Clatworthy*, instructor in teacher education; *Pheobe Chao*, special instructor in English; *Jane L. Davidson*, specialist in reading; *Joseph W. DeMent*, associate professor of English; *John N. Doharas*, instructor in music; *Donald H. Dwyer*, instructor in art; *George H. Engeman*, assistant professor of Spanish; *William C. Forbes*, associate professor of biology; *Lawrence B. Friedman*, assistant professor of chemistry; *Leonardas V. Gerulaitis*, instructor in history; *Renate Gerulaitis*, instructor in German; *Richard E. Haskell*, assistant professor of engineering; *Charles W. Heffernan*, associate professor of music; *Adeline G. Hirschfeld*, assistant professor of speech; *Frederick A. Hughes*, instructor in English; *John Hurd*, instructor in economics; *Leonard Kasdan*, associate professor of anthropology; *Keith R. Kleckner*, associate professor of engineering; *John H. Langer*, assistant professor of education; *Charles P. Lawes*, instructor in mathematics; *Carmine R. Linsalata*, professor of Spanish; *Richard S. Lyons*, assistant professor of English; *Richard A. Mazzara*, associate professor of French; *John M. McKinley*, associate professor of physics; *Wallace S. Messer*, specialist in reading; *Siddheshwar Mittra*, associate professor of economics; *Ross A. Norris*, assistant professor of art; *L. Crocker Peoples*, assistant professor of psychology; *Jean-Pierre Ponchie*, instructor in French; *Jogindar S. Ratti*, assistant professor of mathematics; *Joel W. Russell*, assistant professor of chemistry; *Clyde B. Sargent*, director of area studies program and professor of history; *Ralph J. Schillace*, instructor in psychology; *Norton C. Seeber*, associate professor



At her 83rd birthday party, Mrs. Wilson was joined by OU students as she rang the victory bell "borrowed" from an MSU fraternity for the occasion.

of economics; *Alan L. Seltzer*, instructor in political science; *Richard R. Shank*, associate professor and assistant dean of engineering; *C. Wallace Smith*, instructor in sociology; *Fred W. Smith*, assistant professor of education, associate dean of students, and dean of freshmen; *Harvey A. Smith*, associate professor of mathematics; *W. Patrick Strauss*, associate professor of history; *William F. Sturner*, assistant professor of political science; *Irving Torgoff*, associate professor of psychology; *Richard P. Tucker*, assistant professor of history; *Nalin J. Unakar*, assistant professor of biology; *Kiichi Usui*, visiting assistant professor of art; and *Gilbert L. Wedekind*, assistant professor of engineering.

In promotions since July, *Harvey Burdick*, professor and acting chairman of psychology, was named chairman; *Robbin R. Hough*, associate professor and acting chairman of economics and business, was named chairman; *Walter S. Collins*, professor and chairman of music, was named dean of the Meadow Brook School of Music; and *David Di Chiera*, assistant professor of music and assistant dean of Continuing Education, was named acting chairman of music.

Reuben Torch, professor of biology, was named assistant dean of Arts and Sciences; *Wilbur W. Kent, Jr.*, assistant professor of music, was named assistant dean of performing arts; *Edwin Gault*, assistant to the dean of engineering, was named director of the Computer Center; and *John B. Cameron*, assistant professor of art, was named acting chairman.

Accept Grants Totaling \$125,000

More than \$125,000 in 12 grants have been accepted by Oakland University since the July meeting of the Board of Trustees.

The grants include \$7,320 from Ling-Temco-Vought, Inc., to be used under the direction of *John E. Gibson*, dean of engineering, for aerospace research using biological engineering techniques in pattern recognition; \$3,000 from the American Chemical Society, under *Joel W. Russell*, assistant professor of chemistry, for study of Coriolis Perturbation of Vibrational Intensities; \$7,500 from the Rockefeller Foundation for support of Latin American student conductors at the Meadow Brook School of Music.

Five thousand dollars from the U.S. Office of Education for library acquisitions; \$3,580 from Michigan Department of Education for a program providing college personnel working in

social agencies with basic orientation to poverty; \$2,967 from the Michigan Department of Education for a workshop on community organization for school directors, social workers, and volunteers; \$2,160 from the Michigan Employment Security Commission.

A matching grant of \$50,558 from the U.S. Office of Education for instructional equipment; \$22,290 from the U.S. Office of Education to continue the University's Language and Area Center for Chinese Studies; \$9,900 from the National Science Foundation for instructional scientific equipment; \$9,000 from the NSF under the direction of *Robbin Hough*, chairman of the department of economics and business administration, for equipment; and \$3,600 from the NSF, under *Paul Tom-boulion*, professor and chairman of the chemistry department, for undergraduate research program.



From two buildings when it opened in 1959, the OU campus has expanded as shown in this aerial view. The University's \$46 million capital outlay program will add 15 new buildings.

Announce 5-Year Building Program

Oakland University this fall, announced a five-year capital outlay program that calls for more than \$46 million in new construction on the seven-year-old campus. According to Chancellor D.B. Varner, the program will provide 13 academic buildings, an auditorium, and a central heating plant on the 1600-acre campus.

The \$46 million package does not include expenditures anticipated for dormitories, financed on a self-liquidating basis. The University completed its sixth dormitory this fall, and will begin construction on the seventh before the end of the year.

Although expansion of the physical plant at OU has seen the campus grow from two buildings in 1959, to 18 at present, construction has barely kept pace with enrollment growth. From the

opening enrollment of 570 students, the OU student body now numbers some 3,142, and is expected to exceed 7,000 in the next five years.

The five-year building program got under way this month when ground was broken for a \$5 million Dodge Hall of Engineering, expected to be completed by the spring of 1968.

In the 1967-68 fiscal year, plans call for construction, or planning, to begin on two classroom-office buildings, a central heating plant, School of Education and Social Sciences Building. OU will seek initial appropriations in 1968-69 on an auditorium and classroom-office building; in 1969-70, for a physical education building and a classroom-office building; and a classroom-office building in each of the years 1970-71 and 1971-72.



Juliana Trempler, recipient of the first Matilda R. Wilson Honor Scholarship, was congratulated at Parents' Day by Mrs. Wilson and Walton Lewis, president of the Friends of Oakland University, the organization establishing the scholarship.

Oakland University news

VOLUME 3, NUMBER 1

NOVEMBER 1966

published bimonthly from September through June by
Oakland University, Rochester, Michigan. Second class
postage paid at Rochester, Michigan.

RETURN REQUESTED