

Archives
ML
38
.O2
M47
1990
c.3

A Cultural Program
Of Oakland University

Meadow
Brook

MUSIC

FESTIVAL

1 9 9 0



Summer Home of the
Detroit Symphony Orchestra

Contents

Board of Trustees and Officers of the University	4
Complete Season's Performance Calendar	8-9
Oakland University	
Welcome to the Festival	11
"A Cultural Center at Oakland University"	12-23
Special Events	27
Executive and Finance Committees of Meadow Brook	
Music Festival and Meadow Brook Theatre	29
Executive Committee Chairpersons, 1990	33
Past Executive Committee Chairpersons, 1964-89	34-48
Women's Committee Highlights	52-53
Special Acknowledgements	55
Rochester Festival Club	57-58
The Detroit Symphony Orchestra	64-65
DSO Biographies and Program Notes	71-120
Popular Artists	122-136
Contributors to Meadow Brook Music Festival and Meadow Brook Theatre	
Major Donors	141-142
Sponsors	144
Century Club	144-149
Contributors	149-155
Friends of Meadow Brook Music Festival	157-158
Index to Advertisers	160

Staff

The Meadow Brook Music Festival operates under the supervision of
the Director of Cultural Affairs of Oakland University, Stuart C. Hyke

<i>Managing Director</i> Gregg Bloomfield	<i>Public Relations Director</i> Sylvia Coughlin	<i>Ushering Supervisor</i> Kathy Sebastian
<i>Director of Cultural Affairs</i> Stuart C. Hyke	<i>Stage Manager and Production Director</i> Rick Gopigian	<i>Transportation Coordinator</i> Sandra Husted
<i>Interim Vice President for University Extension and Public Service</i> Frank P. Cardimen, Jr.	<i>Associate Stage Manager</i> Larry Burch	<i>Box Office Manager</i> Suzanne Day
<i>Administrative Secretary</i> Barbara J. Sawicke	<i>Artists Relations Director</i> Mary Ellen Shindel	<i>Single Ticket Supervisor</i> Shirley Geary
<i>Finance Director</i> John Fischer	<i>Lighting Engineer</i> Robert Mesinar	<i>Season Ticket Supervisor</i> Agnes Keinrath
<i>Accountant & Financial Analyst</i> Carol Lamb	<i>Audio Engineer</i> Tom Bryant	<i>Supervisor of Box Office Operations</i> Kathleen Gentile
<i>Finance Assistant</i> Sandy Teague	<i>Assistant Audio Engineer</i> Floyd Black	<i>Box Office Staff</i> Dolores A. Chase
<i>Director of Community Relations & Group Sales</i> Jane U. Mosher	<i>Operations Director</i> Gary Gandolfi	Maxine Friedli
<i>Assistant to Director of Community Relations & Group Sales</i> Jacqueline R. Sferlazza	<i>Assistant Operations Director</i> Steve Cook	Jennifer Fry
<i>Office Assistant</i> Roxanne M. Bowman	<i>Parking Supervisor</i> Scot B. Cleaveland	Nancy Hopkins
		Cecilia Roccas
		<i>Cultural Affairs Staff</i> Eileen C. Arseneau
		Sue Sobeck

Monday	Tuesday	Wednesday	Thursday
All concerts begin at 8 p.m. unless otherwise noted.			
	June 19 Pat Metheny Herbie Hancock Jack DeJohnette Dave Holland NO DISCOUNT COUPONS		June 21 Detroit Symphony Orchestra James DePriest, conductor Garrick Ohlsson, violinist
	June 26 George Benson NO DISCOUNT COUPONS	June 27 Rickie Lee Jones Lyle Lovett	June 28 Milton Nascimento
	July 3 The Platters Little Anthony The Diamonds The Dixie Cups FIREWORKS	July 4 Detroit Symphony Orchestra Mitch Miller, conductor FIREWORKS	July 5 Detroit Symphony Orchestra Zdenek Macal, conductor Alexei Sultanov, pianist
		July 11 FAMILY NIGHT "Serious Fun with the DSO" David Daniels, conductor	July 12 Garrison Keillor Chet Atkins with the Hopeful Gospel Quartet special appearance by Mavis & Marvin Smiley
	July 17 Tommy Tune starring in "Bye Bye Birdie"	July 18 Tommy Tune starring in "Bye Bye Birdie"	July 19 Tommy Tune starring in "Bye Bye Birdie"
July 23 Jean-Luc Ponty with special guest NO DISCOUNT COUPONS	July 24 Harry Belafonte with special guest	July 25 FAMILY NIGHT "New Vaudeville" with Fred Garbo and The Wright Brothers	July 26 8:30 p.m. Detroit Symphony Orchestra Michael Lankester, conductor Narrator, to be announced
			August 2 Bob Newhart with special guest
August 6 Basia with special guest NO DISCOUNT COUPONS		August 8 FESTIVAL WOMEN'S FASHION SHOW Lunch begins 11:30 a.m. (Call 370-3316) The Everly Brothers Carl Perkins	August 9 Detroit Symphony Orchestra Vassily Sinaisky, conductor Italo Babini, cellist
		August 15 Tony Bennett with The Count Basie Orchestra	August 16 FAMILY NIGHT "Santa's Summertime Stage" 7:30 p.m.
	August 21 Mannheim Steamroller "The Music of Nature: A Concert for Yellowstone"		
		August 29 Fats Domino Hank Ballard & The Midnighters Bill Haley's Comets	

Friday

Saturday

Sunday

	<p>June 16 Fred Penner with Len Udow & the Cat's Meow Band 11:00 a.m.</p>	
<p>June 22 Ann Jillian Marvin Hamlisch with full orchestra</p>	<p>June 23 The Song Sisters 11 a.m. Henry Mancini Detroit Symphony Pops</p>	<p>June 24 Detroit Symphony Orchestra James DePreist, conductor Itzhak Perlman, violinist</p>
<p>June 29 Detroit Symphony Orchestra Stephen Stein, conductor Michael Feinstein, guest artist FIREWORKS</p>	<p>June 30 Bob McGrath of "Sesame Street" 11 a.m. Harry Connick, Jr. with the Harry Connick, Jr. Orchestra</p>	<p>July 1 Detroit Symphony Orchestra Stephen Stein, conductor Michael Feinstein, guest artist FIREWORKS</p>
<p>July 6 Roger Whittaker</p>	<p>July 7 Roger Whittaker</p>	<p>July 8 Detroit Symphony Orchestra Zdenek Macal, conductor Alexei Sultanov, pianist</p>
<p>July 13 Detroit Symphony Orchestra Neeme Järvi, conductor Roberta Peters, soprano</p>	<p>July 14 Odette & Friends 11 a.m. Meadow Brook Festival Orchestra John McGlinn, conductor</p>	<p>July 15 "The Other Side of Daytime" 2 p.m. Detroit Symphony Orchestra Neeme Järvi, conductor Roberta Peters, soprano</p>
<p>July 20 Tommy Tune starring in "Bye Bye Birdie"</p>	<p>July 21 Tommy Tune starring in "Bye Bye Birdie"</p>	<p>July 22 Sharon, Lois & Bram with Elephnt & the Mammoth Band 1 & 4:30 p.m.</p>
<p>July 27 Chubby Checker The Drifters Gary U.S. Bonds The Tokens</p>	<p>July 28 Detroit Symphony Pops Erich Kunzel, conductor</p>	<p>July 29 8:30 p.m. Detroit Symphony Orchestra Michael Lankester, conductor Narrator, to be announced</p>
<p>August 3 Detroit Symphony Orchestra Nicholas McGegan, conductor</p>	<p>August 4 Linda Arnold & Frank Cappelli 11 a.m. Peter, Paul & Mary</p>	<p>August 5 "Big Band Sounds" 2 p.m. Detroit Symphony Orchestra Nicholas McGegan, conductor</p>
<p>August 10 Johnny Mathis with full orchestra</p>	<p>August 11 Johnny Mathis with full orchestra</p>	<p>August 12 Detroit Symphony Orchestra Vassily Sinaisky, conductor Italo Babini, cellist</p>
<p>August 17 Engelbert Humperdinck NO DISCOUNT COUPONS</p>	<p>August 18 Michael Franks NO DISCOUNT COUPONS</p>	<p>August 19 Lou Rawls with special guest NO DISCOUNT COUPONS</p>
<p>August 24 Laser Light Spectacular! 8:30 p.m. Meadow Brook Festival Orchestra Richard Kapp, conductor</p>	<p>August 25 Laser Light Spectacular! 8:30 p.m. Meadow Brook Festival Orchestra Richard Kapp, conductor</p>	<p>August 26 "The Ghost of the Paris Opera" 8:30 p.m. with Laser Lights Meadow Brook Festival Orchestra Charles Greenwell, conductor</p>

Archives
ML
38
.02
M47
1996
C.3

BOARD OF TRUSTEES

Patricia B. Hartmann
Chairperson

Howard F. Sims
Vice Chairperson

Larry W. Chunovich

Ken Morris

Phyllis Law Googasian

Stephan Sharf

David Handleman

James A. Sharp, Jr.

Joseph E. Champagne
Ex Officio

OFFICERS OF THE UNIVERSITY

Joseph E. Champagne
President

Keith R. Kleckner
*Senior Vice President
for University Affairs
and Provost*

John H. De Carlo
*Vice President for
Governmental Affairs
General Counsel, and Secretary
to the Board of Trustees*

Robert J. McGarry
*Vice President for Finance and
Administration and Treasurer
to the Board of Trustees*

Wilma H. Ray-Bledsoe
*Vice President for Student
and Urban Affairs*

David H. Rodwell
*Vice President for Development
and Alumni Affairs*

Frank P. Cardimen, Jr.
*Interim Vice President
for University Extension and
Public Service*

Welcome



As we enter the decade of the 1990's Emilie and I are pleased to welcome you to the 27th season of festival concerts. Over the years the artists have changed but the festival's goals remain constant; to provide the finest possible blend of classical artists with popular entertainers, and appeal to the greatest variety of tastes. We hope you will enjoy the concerts in a beautiful setting made possible by your patronage combined with the efforts of the staff and the hundreds of volunteers.

Sincerely,

J E Champagne

President
Oakland University

Well into our second quarter century . . .

A CULTURAL CENTER AT OAKLAND UNIVERSITY

Matilda Dodge Wilson's dream of a cultural center for the community continues to be fulfilled as Oakland University celebrates the 27th season of the Meadow Brook Music Festival and the silver anniversary seasons for the theatre and art gallery.

In fact, the University enters the 1990's with the dream a long-established reality and with high artistic quality a respected tradition.

It was in 1957 that Matilda R. and Alfred G. Wilson donated their Meadow Brook Farms estate and \$2 million to Michigan State University to establish the first four-year university in Oakland County.

That gift would also help launch the dream expressed by Matilda Wilson and D. B. Varner and other university officials — that from its first 12 concerts by the Detroit Symphony Orchestra — the “festival is aimed toward a long-range goal of developing an impressive performing arts center to include all phases of music, theatre and dance.”

The professional nature of both the festival and the Meadow Brook Theatre, which debuted in 1967, would distinguish the Meadow Brooks from the cultural offerings at other campuses.

But the university commitment to the

arts has always included a strong base for student productions, and at one point included professional student training programs through the now discontinued

Academy of Dramatic Art and the Meadow Brook Summer School of Music.

The most recent figures show approximately 332,000 people attending the Festival, Theatre, and Art Gallery events the past season.

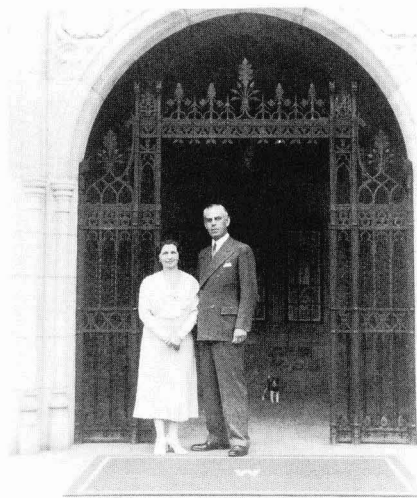
The artists and support staff have changed over the years, but the goals of the Meadow Brooks have not. The objectives are diverse professional offerings to appeal to a wide segment of the Southeastern Michigan audience.

Community involvement has also been a

Meadow Brook hallmark, from the first festival General Chairmen Mr. and Mrs. Simon E. Knudsen to the 1990 festival General Chairmen Mr. and Mrs. Richard E. Dauch.

Oakland University President Joseph E. Champagne and Emilie Champagne pay tribute to that continuing commitment from business and the general community. They pay tribute to the hundreds of volunteers in their statement of welcome in the 1990 program book.

Some capsule views of the university's key cultural offerings follow.



Matilda and Alfred Wilson

MEADOW BROOK MUSIC FESTIVAL

The Meadow Brook Music Festival was founded in 1964 as the summer home of the Detroit Symphony Orchestra. From the start, visiting orchestras, summer music institutes, master classes, operatic concerts, ballet and modern dance have been offered. In its 26 years the festival has broadened its offerings to provide music for every taste. There are internationally renowned conductors and soloists in performance with the DSO. Popular attrac-

tions were added in 1970, featuring well-known artists in the pop, folk and rock & roll genres. Children's concerts and staged musicals have been added in recent seasons. And this year, according to the Managing Director Gregg Bloomfield, family night concerts are being introduced.

An acoustic delight, the Howard C. Baldwin Pavilion seats 2,200 with 5,000 more on the lawn. Attendance hit 191,000 in 1989.

Ambiance is important for the ear and palate, and dining accommodations include waitered and buffet service at Trumbull Terrace, and a spacious picnic area with picnic tables and two tents for groups from 20 to 200. Other patrons prefer their own picnics on the lawn.

The facilities include the Treble Clef Gift Shop which is located between Trumbull Terrace and the pavilion.

MEADOW BROOK THEATRE

The Meadow Brook dream expanded in 1967 with the first season of the John Fernald Company of the Meadow Brook Theatre. Since its initial season Meadow Brook Theatre attendance has become a habit for thousands of people throughout Michigan.

Meadow Brook's eight-play seasons run from October through May, and include a wide variety of entertainment, from musicals to classical Shakespeare and contemporary works by playwrights such as

Neil Simon. Each year Charles Dickens' *A CHRISTMAS CAROL* is presented as holiday tradition.

Current artistic Director Terrence Kilburn seeks actors throughout North America and theatre goers will recognize many of the cast from work in commercials, television, film and other theatres. Meadow Brook Theatre has starred such notables as Academy Award winner William Hurt, *MOONLIGHTING* star Curtis Armstrong and the fearsome Freddy of *NIGHTMARE ON ELM STREET*, Robert Englund.

Meadow Brook Theatre has a seating capacity of 608 and is known for its excellent acoustics and sightlines. With subscriptions of over 10,000 the theatre is one of the country's most successful regional theatres. Some 131,000 patrons attended in 1988-1989.

1990-91 SEASON

CABARET

October 4-28

by Masteroff/Kander/Ebb

THE MOUSETRAP November 1-25

by Agatha Christie

A CHRISTMAS CAROL

November 29 (December 6 for subscribers)-December 30

by Dickens/Nolte

WHAT I DID LAST SUMMER

January 3-27

by A. R. Gurney

A MIDSUMMER NIGHT'S DREAM

January 31-February 24

by William Shakespeare

BAREFOOT IN THE PARK

February 28-March 24

by Neil Simon

INHERIT THE WIND

March 28-April 21

by Jerome Lawrence & Robert E. Lee

PUMP BOYS AND DINETTES

April 25-May 19

by Foley/Hardwick/etc.



Patti Perkins and Paul DeBoy in *Diary of a Scoundrel*.



Michael James Laird and Arthur Beer in *A Walk in the Woods*.

MEADOW BROOK ART GALLERY



"The Temptation of Santa Rita"
FERNANDO BOTERO
Oil on canvas
1970

Curator Kiichi Usui mounts exhibits ranging from the permanent collection to outstanding collections from private and institutional sources.

Gallery friends provide financial and artistic support through the Meadow Brook Gallery Associates.

Many people have also become familiar with the Meadow Brook Art Gallery while attending productions at the Meadow Brook Theatre, thanks to the gallery location across from the theatre. The gallery is open on performance nights from 7 p.m. until after the first intermission. Regular gallery hours are 1-5 p.m. Tuesday through Friday and 2-6:30 p.m. on Saturday and Sunday.

The gallery was established to develop an art collection for the university and to arrange exhibits for the benefit of the public, university students and staff.

Oakland University's commitment to the cultural community is carried out, not only by the Meadow Brooks, but by its academic programs as well.

EXHIBITIONS FOR 1990-91

October 3-November 11, 1990

The gallery will open its 1990-91 season with "A Retrospective: 25 Years of Meadow Brook Theatre Stage and Costume Design," celebrating both the theatre and art gallery's 25th anniversary with a black tie fund raising opening event.

November 25-December 23, 1990

"Toys Created By Artists," unique original toys created by Michigan artists. An exhibition and sale for the holiday season.

January 27-March 17, 1991

"Protest," a survey of art created by impulse against the political oppression in East Europe, Central and South America.

April 7-May 19, 1991

"Contemporary Art from Israel" co-sponsored by the American-Israel Education Institute and Meadow Brook Gallery Associates.



"Donald and Roy"
ALEX KATZ
Oil on canvas
1968

OAKLAND UNIVERSITY CENTER FOR THE ARTS

The Center for the Arts conducts workshops for young people and adults and does extensive programming for young people.

The workshops cover such areas as theatre, piano, mime and organ.

The young people's program includes a summer Arts for Youth Camp and classes for artistically gifted young people.

The center is the umbrella unit for the university's student departmental performances in art, dance, music and theatre for the public. Plays and concerts can feature student, faculty and guest artists. Some of the best known performers offered through the center are professional and faculty guest artists, pianist Flavio Varani, and the award winning Lafayette String Quartet.



Center for the Arts production of AMADEUS

THE DEPARTMENT OF MUSIC, THEATRE AND DANCE



Meadow Brook Estate

The Department of Music, Theatre and Dance offers students numerous opportunities for performance and study of the various academic aspects of the arts. The students can satisfy their avocations or pursue degrees ranging from Bachelor of Arts through the masters in music to minors in theatre and dance.

Ensembles range from large (University Chorus, Concert Band and the Pontiac-Oakland Symphony) to small (piano ensemble, Meadow Brook Estate and chamber music groups).

In theatre, large scale productions in the Studio Theatre alternate with shorter, experimental works in more intimate settings. The Oakland Dance Theatre provides a showcase for students interested in innovative choreographic ideas and new concepts for dance.

THE DIVISION OF CONTINUING EDUCATION

The Division of Continuing Education carries out Oakland University's mission to members of the community who need professional programs or who want to learn for the sake of learning itself.

In its noncredit **Educational Voyage Series**, Continuing Education presents two groups of seminars: *Enigma of Genius*, which explores inspired talent from film,

literature, music, science and art; and *Classics of Western Tradition* in which participants read and interpret great works of literature.

Western Classics, a university level course, meets in the book-lined library of Meadow Brook Hall with Oakland's faculty instructing. *Enigma of Genius* lecturers are prominent professionals, plus

distinguished Oakland University professors.

Continuing Education is joined by The College of Arts and Sciences in presenting the *Enigma of Genius* seminars. The seminars are made possible by a grant from the Michigan Council for the Humanities, which is sponsored and funded by the National Endowment for the Humanities.

ENIGMA OF GENIUS 1990-91

DATE	TOPIC	SPEAKER
Sept. 20, 1990	Michelangelo	Prof. Charlotte Stokes Oakland University
October 18, 1990	Eliel Saarinen	Dr. Lillian Bauder (Pres. Cranbrook Institute)
November 15, 1990	Thomas Edison	Prof. Richard Stamps Oakland University
January 24, 1991	Emily Dickinson	Prof. Jane Eberwein Oakland University
February 21, 1991	To Be Announced	Maestro Neeme Järvi Detroit Symphony Orchestra
March 18, 1991 (Monday — MBT)	Neil Simon	Lawrence DeVine — Detroit Free Press Susan Stark — The Detroit News

CLASSICS OF WESTERN TRADITION 1990-91

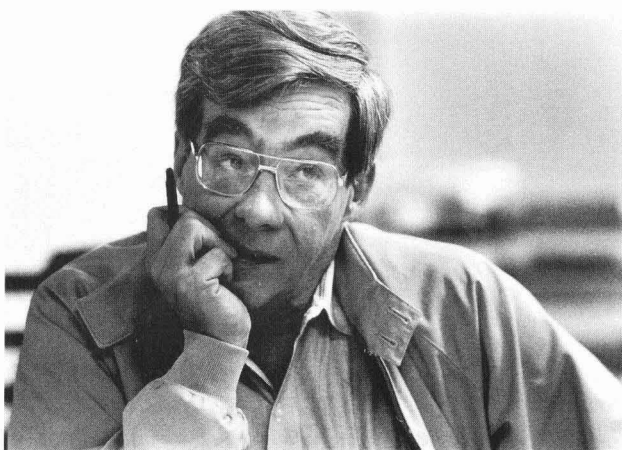
DATE	SEMINAR	PROFESSOR
September 11-25	Herman Melville: <i>Moby Dick</i>	Nigel Hampton
October 2-9	Mark Twain: <i>Adventures of Huckleberry Finn</i>	Laurie Grimm
October 16-23	William Shakespeare: <i>The Tempest</i>	Michael E. Gillespie
October 30, November 6-13	Dante Alighieri: <i>The Inferno</i>	Leonardas V. Gerulaitis
January 8-29	Edward Gibbon: <i>The Decline and Fall of the Roman Empire</i>	Leonardas V. Gerulaitis
February 5-12	William Shakespeare: <i>Othello</i>	Margo King
February 19-26	Sophocles: <i>Antigone</i>	Sheldon L. Appleton
March 5-12	Arthur Miller: <i>Death of a Salesman</i>	William Schwab
April 23-30, May 7	Ernest Hemingway: <i>The Sun Also Rises</i>	Brian F. Murphy
May 14-21	Alexis de Tocqueville: <i>Democracy in America</i>	Charles Mabey
May 28, June 4-11	The Federalist Papers: <i>Declaration of Independence</i>	Brent S. Steel
June 18-25	Titus Lucretius: <i>De Rerum Naturae (On the Nature of Things)</i>	Richard J. Burke

MCGREGOR CHAIR IN ARTS AND HUMANITIES

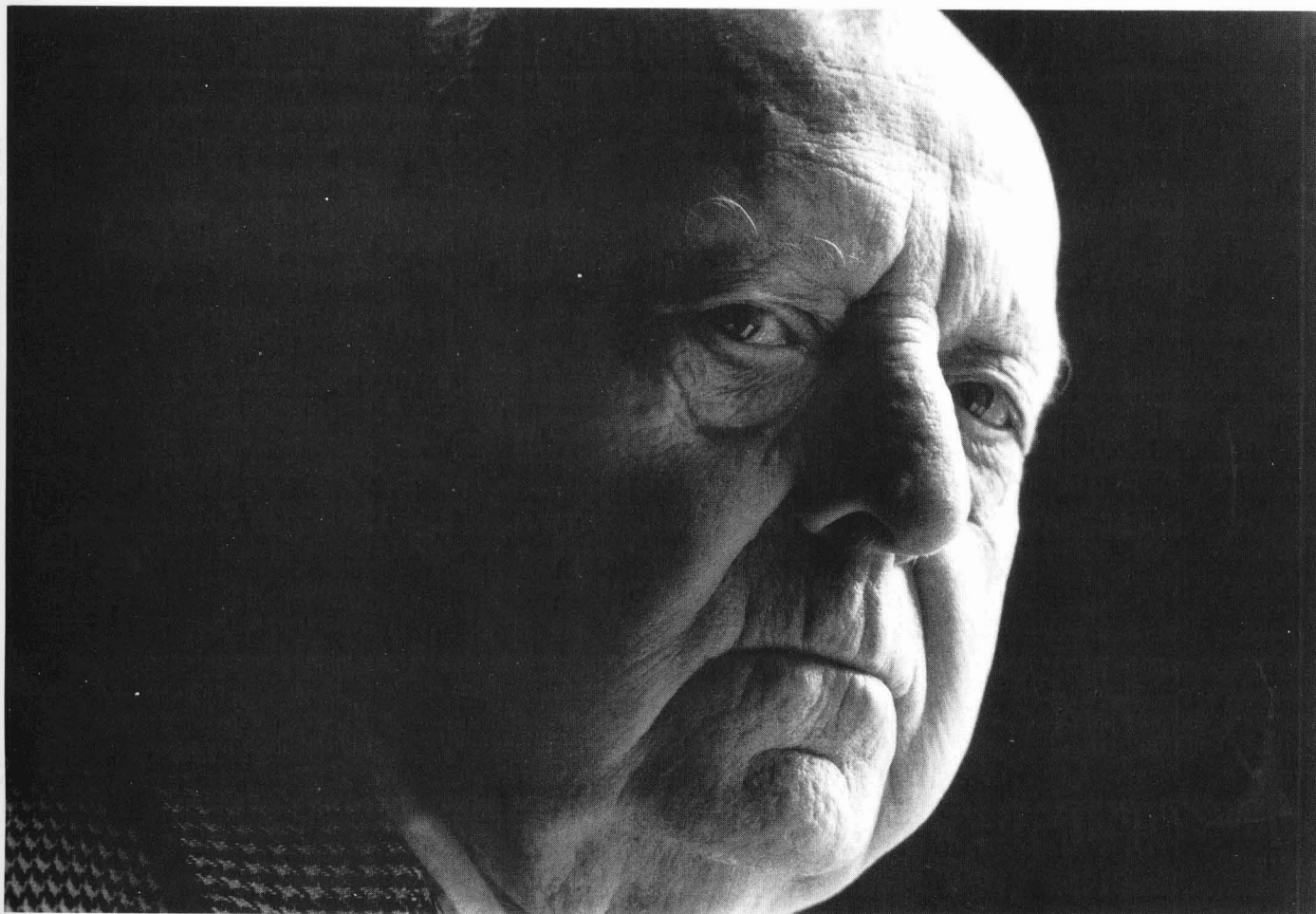
The McGregor Foundation of Michigan gave the Honors College of the College of Arts and Sciences a gift of \$75,000 a year for three years in 1986 for fellowships to outstanding artists.

Renowned composer-critic Virgil Thomson was the first McGregor artist appointee, acting as Professor of the Humanities and Arts in the Honors College during the 1987-88 academic year. In that time he was artist-in-residence, teaching a course each semester, giving public lectures, presiding at concerts and "Evenings with Virgil Thomson."

Kurt Luedtke, Academy Award-winning writer of *OUT OF AFRICA*, held the chair in the 1988-89 year.



Kurt Luedtke



Virgil Thomson

MEADOW BROOK HALL

In addition to the fine arts is another valuable Meadow Brook. Meadow Brook Hall, the 100-room Tudor style mansion is a campus showpiece and one of the major auto magnate mansions in the Detroit area.

Approximately 100,000 people a year come to the Hall for conferences, tours and special events. It is the sight of an annual Christmas Walk, the Gehringer-Kaline Golf Classic and a classic car show, Concours d'Elegance.

The story of the 100-room mansion dates to 1907 when Matilda Rausch married John Dodge, who was making automotive history with his brother, Horace. John Dodge died in 1920 at the age of 55. Five years later Matilda Dodge married Alfred G. Wilson, a Wisconsin lumber broker.

On their European honeymoon the newlyweds gathered ideas from English manor houses for a home they would build, Meadow Brook Hall. In 1926 construction began on the grounds of the Meadow Brook Farm property which had been the Dodges' country retreat.

The result was a \$6 million 100-room mansion. The Wilsons moved into Meadow Brook Hall in 1929 and over the years added farm buildings and a retirement home.

In 1957 the Wilsons donated their entire estate to the State of Michigan for a university on their property — first called Michigan State University-Oakland — and then renamed Oakland University.

The Wilsons continued to live at Meadow Brook Hall until they died, Alfred in 1962 and Matilda in 1967.

In 1971 Oakland University took over Meadow Brook Hall and, according to Matilda Dodge Wilson's wishes, converted it to a residential conference and cultural center. It has been carefully preserved with its original furnishings and art treasures intact.

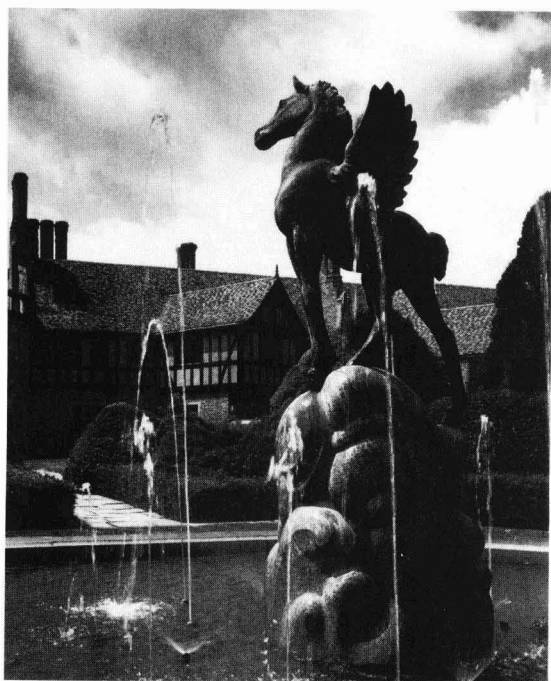
Sunset Terrace, the retirement home that the family never occupied, is used as a small conference center annex to Meadow Brook Hall. It was designed by the same architects as the hall, but is primarily curvilinear, featuring a large round living room and large areas of glass.

The former horse riding rink has been named Shotwell-Gustafson Pavilion and accommodates large exhibitions and functions that require seating for up to 1,000 people.

Clearly, Oakland University continues to build on Matilda Dodge Wilson's initial vision: The university is home to a cultural center unmatched anywhere in the country.

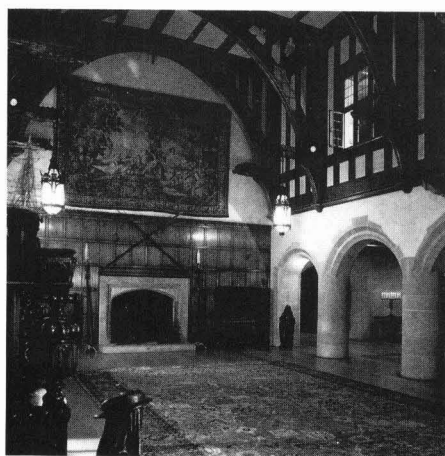


Meadow Brook Hall



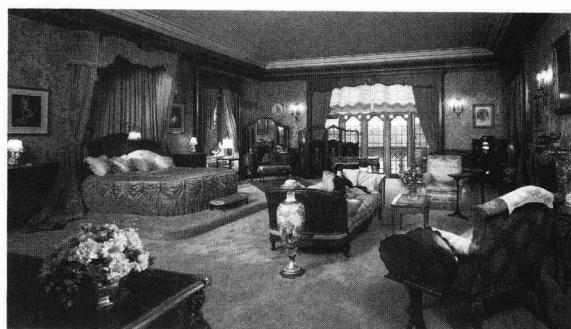
BALTHAZAR KORAB

Pagasus Fountain



BALTHAZAR KORAB

Ballroom



H. K. BARNETT

Matilda Wilson's Bedroom



Concours d'Elegance

SPECIAL EVENTS

Picnic on the Grass XVIII and Bird House Exhibition and Sale

July 17, 1990

The Meadow Brook Gallery Associates present "Picnic on the Grass XVIII and Bird House exhibition and Sale" on Tuesday, July 17, 1990 at the opening of the American musical "Bye Bye Birdie."

The bird houses will be designed by artists and architects and exhibited for sale on the festival grounds from July 10 through July 17, 1990. Ten selected bird houses will be auctioned at the picnic. The picnic will include cocktails and dinners. For information please call (313) 370-3005.

A Garden Party

August 8, 1990

The Meadow Brook Music Festival Women's Committee and Saks 5th Avenue will present an exciting afternoon of fashion in the Shotwell-Gustafson Pavilion on Wednesday, August 8, 1990. The doors will open at 11:30 a.m. for lunch with fashions at 1:30 p.m. For ticket information please call (313) 370-3316.

Gala 25th Celebration

"Cabaret" Preview

October 3, 1990

Meadow Brook Theatre and Meadow Brook Art Gallery will celebrate the opening of their 25th seasons at a Gala Event on the evening of October 3, 1990. Patrons will enjoy a buffet reception and preview performance of "Cabaret". For additional information please call (313) 370-3316.

Holiday Benefit

November 13, 1990

The Meadow Brook Theatre Guild will host its Fall Benefit at the Jacobson's Store at the Great Oaks Mall. This will be a delightful evening of private shopping with entertainment, hors d'oeuvres and beverages. Call (313) 370-3316.

The Theatre Guild presented its Spring Benefit "Luncheon on the Aisle XIII" on April 27. Patrons were served a box luncheon and treated to scenes and special effects from "Dracula".

1990 Meadow Brook Music Festival/Theatre

Executive Committee

Mr. and Mrs. Richard E. Dauch, General Chairpersons
Mr. and Mrs. Stanley A. Seneker, Vice Chairpersons
Mr. and Mrs. Lloyd E. Reuss, Past General Chairpersons

Advertising and Marketing

Mr. and Mrs. George F. Beech

Corporate Subscription Sales

Mr. and Mrs. David R. Curry
Mr. and Mrs. Homer T. Harrison
Mr. and Mrs. Carlos E. Mazzorin
Mr. and Mrs. Donald A. Pais
Mr. and Mrs. Guy W. Potok
Mr. and Mrs. Thomas T. Stallkamp

Festival Women's Committee

Mr. and Mrs. Herman K. Rosenbusch

Finance Committee

Mr. and Mrs. Clinton D. Lauer
Mr. and Mrs. Thomas N. Murphy
Mr. and Mrs. Donald A. Pais
Mr. and Mrs. Barry D. Price

Flint Area Chairpersons

Mr. and Mrs. Lewis B. Campbell

Program Advertising

Mr. and Mrs. Harold E. Allen
Mr. and Mrs. Philip Guarascio
Mr. and Mrs. A. C. Liebler
Mr. and Mrs. L. Gene Stohler
Mr. and Mrs. John B. Vanderzee

Public Relations

Mr. and Mrs. Steven J. Harris

Rochester Festival Club

Mr. and Mrs. John J. Dziurman
Mr. and Mrs. David F. Shellenbarger

Special Projects

Mr. and Mrs. Anthony W. Bailey
Mr. and Mrs. Joseph W. Bauer
Mr. and Mrs. James L. Howlett
Mr. and Mrs. W. Edwin Mosher
Dr. and Mrs. David R. Rea
Mr. and Mrs. H. Wayne Wells

Theatre Guild

Mr. and Mrs. Douglas R. Christman

Oakland University Personnel

Judge and Mrs. William F. Bledsoe
Mr. and Mrs. Frank P. Cardimen, Jr.
Mr. and Mrs. Robert A. Dearth
Mr. and Mrs. Stuart C. Hyke
Mr. and Mrs. Keith R. Kleckner
Mr. and Mrs. Robert J. McGarry
Mr. and Mrs. David H. Rodwell

Corporate Finance Captains

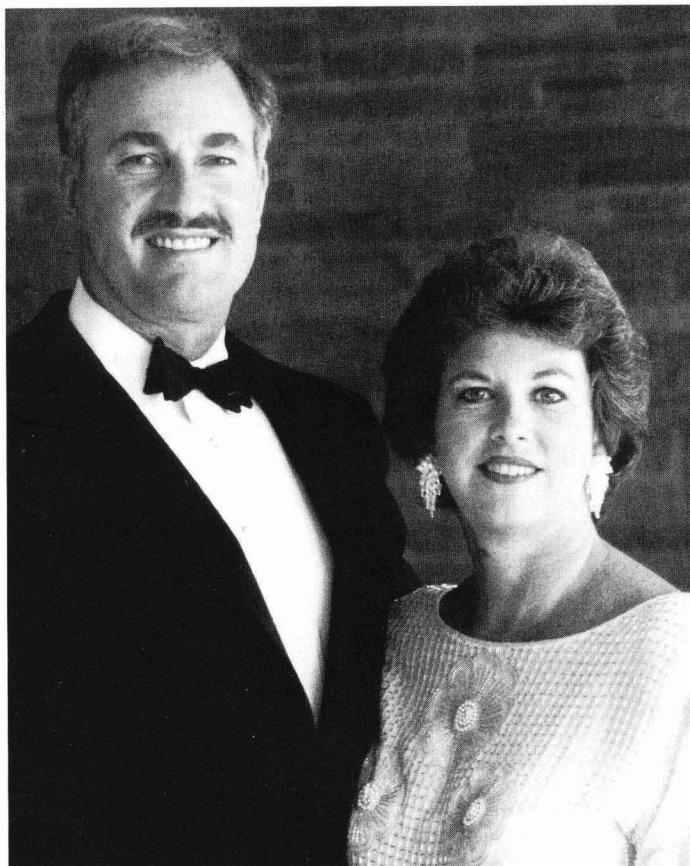
R. E. Acosta
D. J. Almquist
J. T. Battenberg III
J. J. Casaroll
E. P. Czapor
M. Czerny
G. W. Dickinson
T. G. Dickman
C. Dubois
K. W. Dunbar
W. J. Drerup
W. F. Eagen
J. R. Edman
R. Haupt
J. C. Hitchcock

W. E. Hoglund
C. Horwood
J. G. Iamarino
C. Katko
L. J. Krain
J. J. Lyijynen
R. A. Majeske
D. A. Marion
D. D. McDavid
W. Merz
E. M. Mutchler
T. H. Norman
H. J. Pearce
J. E. Rhame
J. D. Russell

L. E. Rybacki
P. Schiffeneder
C. Smith
N. P. Sneath
D. Spina
P. T. Sullivan
S. M. Tarantowicz
W. B. Thompson
J. Tirey
C. J. Vaughn
R. C. White
M. v.N. Whitman
R. M. Yost
R. D. Zella

1990 MEADOW BROOK EXECUTIVE COMMITTEE CHAIRPERSONS

Mr. and Mrs. Richard E. Dauch



As we launch the 27th season of the Meadow Brook Music Festival it gives me great pleasure to express my appreciation to Mr. and Mrs. Richard E. Dauch for their leadership of the 1990 Executive Committee.

The untiring efforts of our dedicated Executive Committee volunteers assure the financial success which makes it possible for Meadow Brook to continue to maintain a position of excellence as one of the most prestigious of the world's music festivals.

On behalf of the University, the staff and the community we serve, we are deeply grateful to Sandy and Dick for their participation, leadership, and commitment.

Joseph E. Champagne
President
Oakland University

PAST CHAIRPERSONS

The best in classical and popular music performances is the standard to which the Music Festival has aspired since its inception in 1963. Much of the success of the Music Festival is attributed to the achievements of the Chairpersons of the Meadow Brook Executive Committee. Some highlights of this leadership during the past 25 seasons is portrayed in the following pages.



Mr. and Mrs. Semon Knudsen
Chairpersons 1964

Meadow Brook is established as the summer home of the Detroit Symphony Orchestra . . . 12 classical symphonic concerts under the direction of Sixten Ehrling . . . Howard C. Baldwin Pavilion built.



Mr. and Mrs. Rinehart S. Bright
Chairpersons 1965

18 classical symphonic concerts . . . Robert Shaw heads the Summer Music School . . . permanent seating added to the Pavilion . . . Trumbull Terrace built.



Mr. and Mrs. Ben D. Mills
Chairpersons 1966

35 classical symphonic concerts . . . Karl Haas is artistic consultant . . . Istomin-Stern-Rose Trio and New York Pro Musica are artists-in-residence . . . new Adams road exit designed for south-bound traffic.



Mr. and Mrs. James O. Wright
Chairpersons 1967

Expansion of Pavilion stage house and Trumbull Terrace . . . permanent box office built . . . Summer Music School continues its third season under the direction of Robert Shaw.

PAST CHAIRPERSONS



Mr. and Mrs. Virgil E. Boyd
Chairpersons 1968

Festival undertakes first venture into field of dance . . . American Ballet Theatre begins 2 seasons of appearances . . . Roger Wagner leads the summer choral music program . . . James Levine conducts concert performance Verdi's "Rigoletto".



Mr. and Mrs. Marvin L. Katke
Chairpersons 1969

Appearance of the New York Philharmonic . . . master classes and appearances by James Levine, Vladimir Ashkenazy, and Itzak Perlman.



Mr. and Mrs. E. M. Estes
Chairpersons 1970

Dramatic departure in programming . . . popular music attractions are added . . . Al Hirt . . . Ramsey Lewis Trio . . . American Ballet Company concerts . . . dessert parlor added to Trumbull Terrace.



Mr. and Mrs. John J. Riccardo
Chairpersons 1971

More popular and variety attractions . . . Ella Fitzgerald . . . Stevie Wonder . . . Judy Collins . . . Royal Winnipeg Ballet . . . expansion of stage house lighting . . . new rest room facilities on south lawn area.

PAST CHAIRPERSONS



Mr. and Mrs. William P. Benton
Chairpersons 1972

Over 40 symphonic, pops, ballet, and modern dance events scheduled . . . New York Philharmonic . . . hillside recontoured to expand seating . . . Doc Severinson . . . Ferrante & Teicher.



Mr. and Mrs. Robert D. Lund
Chairpersons 1973

22 pops attractions and 17 classical concerts . . . National Ballet . . . Vladimir Ashkenazy named artistic adviser . . . stage house rigging and backstage facilities are improved . . . Fiedler . . . Kostelanetz . . . Previn.



Mr. and Mrs. Eugene A. Cafiero
Chairpersons 1974

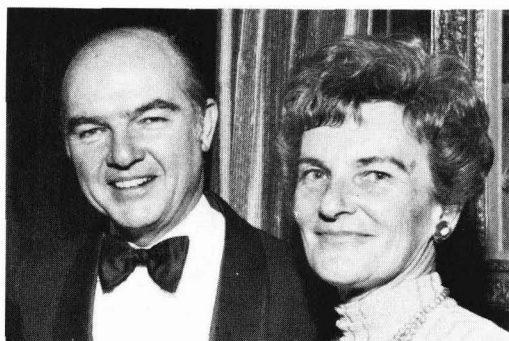
Oakland University celebrates its 15 year . . . a week of jazz added . . . Benny Goodman . . . Earl "Fatha" Hines . . . improvement of Trumbull Terrace . . . San Francisco Ballet.



Mr. and Mrs. Donald E. Petersen
Chairpersons 1975

Tchaikovsky marathon . . . Pennsylvania Ballet . . . children's and matinee concerts added . . . Aldo Ceccato named music director . . . Paul Paray returns . . . improvement of box office.

PAST CHAIRPERSONS



Mr. and Mrs. James McDonald
Chairpersons 1976

Modern Dance Festival . . . Beethoven marathon . . .
Musica Aeterna begins 3 seasons of guest appearances
. . . Women's Committee activities expanded . . .
Barry Manilow . . . Oscar Peterson.



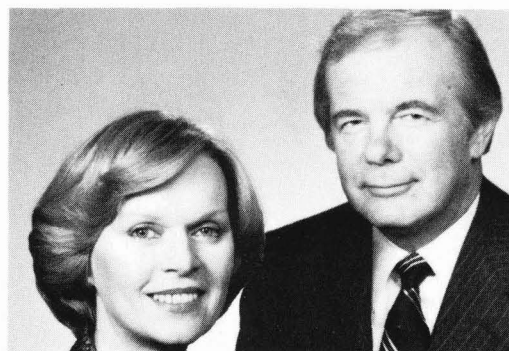
Mr. and Mrs. John C. Secrest
Chairpersons 1977

Over 50 concerts in 12 weeks . . . Royal Danish Ballet
. . . party tent added . . . luncheon in the English
Garden at Meadow Brook Hall benefits the Women's
Committee . . . improvement of the sound system, the
entrance, and the grounds.



Mr. and Mrs. Richard A. Vining
Chairpersons 1978

Klaus Tennstedt and Vladimir Ashkenazy conduct . . .
New York Pro Arte Chamber Orchestra . . . Leslie
Browne and Patrick Bissell of "Turning Point" appear with
The Ballet Repertoire Company . . . Women's
Committee reorganized.



Mr. and Mrs. Bennett Bidwell
Chairpersons 1979

Neville Marriner named artistic director . . . Eliot Feld
Ballet . . . Detroit Symphony Chamber Orchestra . . .
Treble Clef Gift Shop opened on Trumbull Terrace . . .
appearances of Victor Borge, Della Reese, and "Four Girls
Four" benefit the Women's Committee.

PAST CHAIRPERSONS



Mr. and Mrs. Roger Smith
Chairpersons 1980

Eric Leinsdorf conducts the Chicago Symphony Orchestra . . . Jazz Jamboree with Lionel Hampton, Buddy Rich, and Woody Herman . . . Loretta Lynn . . . Neville Marriner conducts Minnesota Orchestra.



Mr. and Mrs. Gerald Greenwald
Chairpersons 1981

Oakland University welcomes new new president, Dr. Joseph E. Champagne . . . increased number of Detroit Symphony Orchestra concerts and variety attractions . . . James Galway and Cleo Laine . . . Phil Donahue . . . Barbara Mandrell . . . Women's Committee sponsors major fund-raiser, The Meadow Brook Fair.



Mr. and Mrs. Harold A. Poling
Chairpersons 1982

Season opens with Bychkov conducting Detroit Symphony Orchestra . . . Fireworks each night Fourth of July weekend . . . Kris Kristofferson . . . Judy Collins . . . Andy Williams . . . Women's Committee raffles car . . . season closes with "Hooked on Classics" and spectacular light show.



Mr. and Mrs. F. Alan Smith
Chairpersons 1983

20th Season of concerts . . . Ehrling, Babini and Staples repeat opening performance of 1964 . . . Neville Marriner accepts directorship of London Symphony . . . First Festival Women's Fashion Show Benefit.

PAST CHAIRPERSONS



Mr. and Mrs. Stephan Sharf
Chairpersons 1984

The very first musical at Meadow Brook-7 performances of "Oklahoma" . . . Blue Grass Marathon . . . U.S. Marine Band . . . Cleveland Orchestra . . . more picnic tables . . . walky-talkys for staff . . . change Sunday DSO concerts to 6:00 p.m.



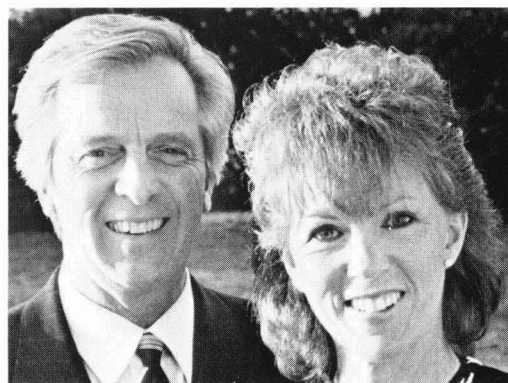
Mr. and Mrs. Louis Ross
Chairpersons 1985

Another musical, "Chorus Line" is a great success . . . San Francisco Ballet returns . . . Canadian Brass makes debut appearance . . . Neville Marriner returns with London Symphony . . . improvements in sound and light panel . . . new asphalt path to pavilion . . . DSO conductors include Berglund, Semkow and Skrowaczewski.



Mr. and Mrs. John R. Edman
Chairpersons 1986

Zubin Mehta conducts the Israel Philharmonic during the 50th Anniversary U.S. Tour . . . one of Liberace's last performances . . . New York Philharmonic with Leonard Bernstein . . . renovation of Trumbull Terrace, expanded rest room facilities . . . handrails for the handicapped.



Mr. and Mrs. Harold Sperlich
Chairpersons 1987

London Symphony . . . 2 performances of Academy of St. Martin in the Fields with Neville Marriner . . . Boston Pops Esplanade Orchestra . . . No fireworks . . . upgraded sound and light panels . . . new patio furniture on Trumbull Terrace . . . resurfaced black tops paths.

PAST CHAIRPERSONS



Mr. and Mrs. Philip E. Benton Jr.
Chairpersons 1988

Highlights of the 25th Season included 3 visiting orchestras . . . the opening of the new Treble Clef Gift Shop . . . a week of "Carousel" and the largest number of concerts in Meadow Brook history.



Mr. and Mrs. Lloyd Reuss
Chairpersons 1989

Five performances of "Annie" starring JoAnne Worley . . . Royal Danish Ballet appeared in June . . . expanded Children's Concert series . . . and Maestro Herbig's last summer as Music Director of the Detroit Symphony Orchestra.



Chamber Music Society OF DETROIT

INTERNATIONAL SERIES

1990 1991

Sunday, October 7, 1990
GUARNERI QUARTET
with John Bruce Yeh, Clarinet

Saturday, October 20, 1990
MUIR STRING QUARTET
with Joseph Kalichstein, piano

Sunday, November 11, 1990
SLOVAK CHAMBER ORCHESTRA

Wednesday, December 12, 1990
BEAUX ARTS TRIO

Wednesday, January 23, 1991
CLEVELAND QUARTET

Friday, March 8, 1991
BEAUX ARTS TRIO

Tuesday, March 19, 1991
TALICH STRING QUARTET
with Menahem Pressler, piano

Wednesday, April 3, 1991
TOKYO STRING QUARTET
Sponsored by Northwest Airlines

Saturday, April 13, 1991
HELENE GRIMAUD

Friday, April 19, 1991
KRONOS QUARTET

All concerts at Orchestra Hall

ORDER TICKETS TODAY! 833-3700

1990 MEADOW BROOK MUSIC FESTIVAL WOMEN'S COMMITTEE

PRESIDENT

Mrs. Herman Rosenbusch

EXECUTIVE BOARD

VICE PRESIDENT

Mrs. Michael T. Thomas

RECORDING SECRETARY

Mrs. David A. Zimmerman

CORRESPONDING SECRETARY

Mrs. John A. Prokop

FINANCIAL SECRETARY

Miss Nathalie Stevenson

MEMBERSHIP SECRETARY

Mrs. Raynold L. Allvin

PARLIAMENTARIAN

Mrs. Thomas E. Thomas

MEMBER-ATLARGE

Mrs. Lee LeBlanc

PAST PRESIDENT, EX-OFFICIO

Mrs. J. Leif Eareckson

DIRECTOR OF COMMUNITY RELATIONS

Mrs. W. Edwin Mosher, Jr.

ADVISORY BOARD

FASHION SHOW

Mrs. Alfred H. Grava

GIFT SHOP

Mrs. Richard Miller, Chair

Mrs. William M. Rogers, Asst. Chair

MEMBERSHIP

Mrs. Raynold L. Allvin

NOMINATING

Mrs. J. Leif Eareckson

Mrs. Harold L. Sharp

Mrs. Daniel D. Tamburo

RAFFLE

Mrs. Harvey S. Freeman, Chair

Mrs. Johannes Buiteweg, Asst. Chair

WAYS AND MEANS

Mrs. Michael T. Thomas

COMMITTEE MEMBERS

Mrs. Raynold L. Allvin
Mrs. Thomas G. Ankeny
Mrs. Lowell V. Apeseche
Mrs. Richard B. Armstrong
Mrs. Charles H. Ashton
Mrs. Ronald N. Avesian
Mrs. J. Larry Barton
Mrs. Marylin J. Brooks
Mrs. Johannes Buiteweg
Mrs. Frank Caiati
Mrs. Ralph A. Caponigro
Mrs. Silvio Ciccone
Mrs. Joseph Collins
Mrs. Francis J. Cook
Mrs. John B. Costello
Mrs. Robert H. Dearth
Mrs. Gerald L. Decker
Mrs. Richard O. Dye
Mrs. J. Leif Eareckson
Mrs. John R. Edman
Mrs. Allan Enis
Mrs. Thomas Fogarty
Mrs. Harvey S. Freeman
Mrs. Philip E. Gerwert
Mrs. Mary E. Gill
Mrs. Alfred H. Grava
Mrs. James C. Hart
Mrs. Royal C. Hayden, Jr.

Mrs. James W. Hulen
Mrs. Henry C. Johnson
Mrs. Richard Kendall
Mrs. Keith Kleckner
Mrs. Roy Knudsen
Mrs. Karl Kristen
Mrs. J. Donald LaCroix
Mrs. Lee LeBlanc
Mrs. Wayne A. Lundy
Mrs. Gerald L. Maas
Mrs. Robert J. Mack
Mrs. R. Bruce Martin
Mrs. Milton J. Miller
Mrs. Richard Miller
Mrs. Eugene R. Mitchell
Mrs. William L. Mitchell
Mrs. Edward Nakfoor
Mrs. Robert L. Nance
Mrs. Donald Pais
Mrs. James Parrott
Mrs. Ronald B. Petrella
Mrs. O. L. Pfaffmann
Mrs. John A. Prokop
Mrs. John E. Rhame
Mrs. Mark A. Richards
Mrs. Donald Robertson
Mrs. David Rodwell
Mrs. William M. Rogers

Mrs. Herman Rosenbusch
Mrs. William Schwartz
Mrs. David W. Scott
Mrs. Walter L. Scutt
Mrs. John C. Secrest
Mrs. Stephan Sharf
Mrs. Harold L. Sharp
Mrs. Gerald L. Shultz
Mrs. Robert Smith
Mrs. Nathalie Stevenson
Mrs. Jack Stroebel
Mrs. Robert W. Swanson
Mrs. Daniel D. Tamburo
Mrs. Michael T. Thomas
Mrs. Thomas E. Thomas
Mrs. Douglas M. Thornton
Mrs. Donald D. Tweedie
Mrs. Yvonne Verschueren
Mrs. Richard A. Vining
Mrs. Ronald H. Vogt
Mrs. Harold L. Walters
Mrs. John R. Waski
Mrs. David S. Weatherell
Mrs. James Weiss
Mrs. Harry D. White, Jr.
Mrs. Donald F. Wilkins
Mrs. Ronald Wonboy
Mrs. David Zimmerman

PAST PRESIDENTS

Mrs. Francis A. Engelhardt
Mrs. Fredrick Stare
Mrs. David W. Scott
Mrs. Douglas M. Thornton
Mrs. O. L. Pfaffmann
Mrs. Eugene R. Mitchell

Mrs. Thomas E. Thomas
Mrs. Wayne A. Lundy
Mrs. Richard B. Armstrong
Mrs. Harold D. White, Jr.
Mrs. J. Leif Eareckson

HONORARY MEMBERS

Mrs. Joseph E. Champagne
Mrs. Richard E. Dauch
Mrs. Francis A. Engelhardt
Mrs. Donald D. O'Dowd

Mrs. Fredrick Stare
Mrs. Douglas M. Thornton
Mrs. George T. Trumbull

HIGHLIGHTS OF 1990



Executive Board

Susan Zimmerman, Recording Secretary, Nathalie Stevenson, Financial Secretary, Diane LeBlanc, Member-at-large, Beverly Rosenbusch, President, Ruth Thomas, Vice President, Mary Carol Prokop, Corresponding Secretary, Leslee Allvin, Membership Secretary



Raffle Co-chairpersons

Lois Freeman, JoAnne Buiteweg



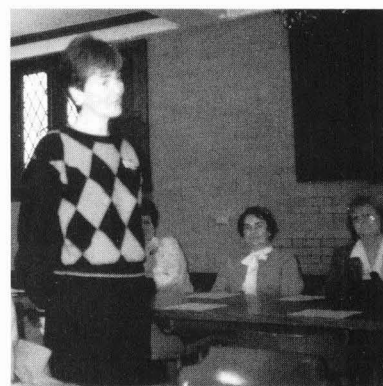
Chairperson of Fashion Show

Carla Grava



Gift Shop Committee

Marsha Rogers, Crystal Thomas, Nancy White, Anna Mae Schwartz, Marie Tamburo, Peggy Schultz, Diane LeBlanc, Nathalie Stevenson. Missing from picture, Pat Gerwert



Chairperson of Gift Shop

Betty Miller

SPECIAL ACKNOWLEDGMENTS

THE KRESGE FOUNDATION

The Meadow Brook Music Festival expresses its appreciation to one of its most important benefactors — The Kresge Foundation.

In 1964 when the Festival was a dream, the Kresge Foundation made a \$76,000 gift to the capital fund in memory of civic leader and foundation trustee, Howard C. Baldwin, for whom the pavilion is named. A second gift, a year later, of \$50,000 made possible the permanent seating in the pavilion. Subsequently, the Foundation provided an additional capital grant of \$33,000 which provided additional dressing rooms below stage, new electrical circuits, a sound reinforcement system and new restroom facilities. A grant of \$145,000 provided for repair work in the pavilion and a box office addition in 1977. Most recently, a grant of \$100,000 has been used to upgrade the lighting system, structural improvements in and around the stage area, paving the service road and loading dock area, painting of the seats and girders, and general repair.

LULA C. WILSON TRUST

The original gifts of the Lula C. Wilson Trust provided the concert shell for the stage house of the Music Festival. The Meadow Brook acoustics distinguish the Music Festival as one of the front-ranked concert and amphitheatres in North America.

The continuing support of the Lula C. Wilson Trust assists the Music Festival in providing the finest cultural programs to enrich the community as a whole.

MRS. GEORGE T. TRUMBULL

The original gift of Mr. and Mrs. George T. Trumbull made possible the construction of the Trumbull Terrace dining facility; and patrons of the Meadow Brook Music Festival continue to benefit from their generosity. Mrs. Trumbull has provided improvements to Trumbull Terrace, the magnificent flowers on the grounds, and the tables and chairs in the Cafe Promenade. We are grateful for her continued interest and support.

MEMORIAL CONCERTS

June 21 — Opening Night
V. Everett Kinsey Memorial Concert

June 29 — Detroit Symphony Orchestra
Nancy Schucart Molasky Memorial Concert

July 13 — Detroit Symphony Orchestra
John S. Judd Memorial Concert

July 17 — "Bye Bye Birdie"
George T. Trumbull Memorial Concert

July 21 — "Bye Bye Birdie"
Louis C. Goad Memorial Concert

FESTIVAL CO-SPONSORS

The Meadow Brook Music Festival acknowledges the generous support of its co-sponsors

The Detroit News
The Detroit Free Press
The Observer & Eccentric Newspapers
Comerica
Hudson's

WJR
WWJ/WJOI
WOMC
WKBD-TV Channel 50
WJBK-TV Channel 2

Detroit Symphony Orchestra classical concerts are the
CHRYSLER CONCERT SERIES
made possible through the generosity of the Chrysler Corporation Fund

Food Service by Bowman's Catering, Berkley, Michigan

The Meadow Brook Music Festival is funded in part by a grant from the Michigan Council for the Arts.

1990 MEADOW BROOK ROCHESTER FESTIVAL CLUB

CO-CHAIRPERSONS

Mr. and Mrs. David Shellenbarger

Mr. and Mrs. John Dzuirman

COMMITTEE

Mr. and Mrs. Michael Carson

Dr. and Mrs. Kenneth Cerny

Mr. and Mrs. Paul Chastney

Dr. and Mrs. Thomas Cook

Mr. and Mrs. Edward Doss

Mr. and Mrs. Donald Giffels

Mr. and Mrs. William Goudie

Mr. and Mrs. Gordon Haack

Mr. and Mrs. Paul Haig

Dr. and Mrs. David Hollett

Mr. and Mrs. Noel Huyck

Mr. and Mrs. Patrick Karpen

Mr. and Mrs. Bayard F. Lawes

Mr. and Mrs. Kerry MacVay

Mr. and Mrs. Henry Mittelstaedt

Mr. and Mrs. Brad Mitzelfeld

Mr. and Mrs. David Monroe

Mr. and Mrs. Roy E. Parrott

Mr. and Mrs. Vern A. Pixley

Mr. and Mrs. Frank Rewold

Mr. and Mrs. Thomas Schaden

Mr. and Mrs. James Scovic

Mr. and Mrs. William Swasey

Mr. and Mrs. Otis Walton



Frank Cardimen, Jr., Interim Vice President for University Extension and Public Service, Oakland University



Gregg Bloomfield, MBMF Managing Director. Stuart Hyke, Director of Cultural Affairs, Oakland University



John Dzuirman, Kathy Dzuirman, Kathie Shellenbarger, David Shellenbarger, Co-chairpersons, Rochester Festival Club

1990 MEADOW BROOK ROCHESTER FESTIVAL CLUB

Major Donors

Anonymous
Dr. and Mrs. Jaime V. Aragones
Mr. and Mrs. James R. Avery
Ed Bachman, Remco Toys
Mr. and Mrs. William Bleisch
Dr. and Mrs. Roger C. Byrd
Mr. and Mrs. Paul Chastney
Charles E. Cohen Assoc. Inc.
Dr. and Mrs. Thomas Cook
Mr. and Mrs. Richard J. DeLoof
Dr. and Mrs. Frank Nelson Derr
Mr. and Mrs. Al W. Dittrich
Mr. and Mrs. Donald K. Easley
Mr. and Mrs. Warren W. Leofy
Mr. and Mrs. Thomas E. Evans
Federal-Mogul
Dr. and Mrs. Dean S. Fields, Jr.
Mr. Donald D. Foss
Mr. and Mrs. Keith D. Gardels
Mr. and Mrs. William R. Goudie
Mr. and Mrs. Dale F. Hanson
Mr. and Mrs. David S. Hollett
Mr. and Mrs. Noel C. Huyck
Jacobson Stores
Mr. and Mrs. Robert H. Jeske
Mr. and Mrs. William H. John
Mr. and Mrs. Patrick N. Karpen
Dr. and Mrs. John S. Kerns
Mr. and Mrs. Wes L. Koch, Jr.
Mr. and Mrs. Fred Kort
Ernest and Nancy Kosch
KPMG Peat Marwick Foundation
Walt and Nancy Kubinski
Mr. and Mrs. Robert S. Martin
Mr. and Mrs. Michael D. McCoy
Dr. and Mrs. Thomas I. Millman
Dr. and Mrs. Moufid Mitri
Mr. and Mrs. David C. Monroe
Mr. and Mrs. Patrick E. Moran
Janet and Edward Neumann
Mr. and Mrs. Roy E. Parrott
Arnold Rubin-FunRise, Inc.
Mr. and Mrs. Thomas F. Russell
Thomas and Veronica Schaden
Mr. and Mrs. Charles L. Schmitz
Mr. and Mrs. Kenneth Schwark
Mr. and Mrs. David F. Shellenbarger
Mr. and Mrs. G. Graham Silcox
Simpson Industries Fund
Mr. and Mrs. David Fred Smith
Strombecker Corporation
David and Debra Swenson
Mr. Kenneth G. Szymanski
Mr. and Mrs. Kenneth A. Tippy
Dr. and Mrs. Raymond L. Tremblay
Brad and Sue Upton
Janet Varner
Mr. and Mrs. Clarence E. Whitbey
Mr. and Mrs. Donn B. Whitmer
Mr. and Mrs. James Williams
Mr. and Mrs. Stanley L. Wilson, Jr.
Mr. and Mrs. Ronald A. Wonboy
Mr. Harvey M. Zalesin

Contributors

Mr. and Mrs. Joseph W. Albright, Jr.
All Destinations Travel-Else Briggs
Mr. and Mrs. Charles H. Allen
Katherine M. Altherr
Anonymous
Bill and Doris Atwood
Robert and Sally Bailey
Dr. and Mrs. Bradley T. Barnes
Mr. and Mrs. Anthony V. Battaglia
Dr. and Mrs. Jack Belen
Milford and Marilyn Bennett
Mr. and Mrs. Kenneth Berman
Richard J. Bingham
Mrs. Edward N. Bowen
Bob and Janey Braglia
Larry and Sue Bruzzese
Diane and Bill Bullard
Mr. and Mrs. Stephen P. Carrington
Marilyn and Ken Cerny
Collegeville Flag & Mfg. Co.
Mr. and Mrs. Robert Colombine
Mr. and Mrs. Roger L. Conley
Paul Corby Associates, Inc.
Mr. and Mrs. William S. Couch
Mr. and Mrs. Wendell Creps
Mr. Charles L. Crissman
Michael P. and Linda K. Daniels
Raymond DeSteiger, Inc.
Hugh and Cathy Diamond
Andrew A. Dincolo
Mr. Patrick Dlugokinski
Mr. and Mrs. Edgar L. Doss
Mrs. John J. Dudek
John and Kathy Dziurman
Eames, Wilcox, Mastej and Bryant
Dr. and Mrs. William Ebinger
L. A. Edwards
Mr. Thomas J. English
Gene and Cynthia Ferrera
Bill Fox Chevrolet, Inc.
John T. Francis, Jr.
Mr. and Mrs. Robert Garlick
Mr. and Mrs. Leonard Gay
Mr. and Mrs. Richard Giannelli
Mr. and Mrs. Donald J. Giffels
Mr. and Mrs. William Gilbert
Mr. and Mrs. Dennis Gormley
Bill and Diane Gruebnaue
Mr. and Mrs. Paul Haig
Dr. and Mrs. Arch H. Hall
Beach and Marianne Hall
Larry R. and Jayme Hamilton
Mr. and Mrs. James R. Hare
Mr. and Mrs. Peter Harris
Mr. and Mrs. Carl Hasselwander
Mr. and Mrs. Larry Heil
Bernie and Ellie Heinrich
Mr. Marvin Hellerman
Mr. and Mrs. Jack A. Herzberg
Stuart Hess Associates, Inc.
Robert and Katherine Higginbotham
Alice G. Horter

Mr. and Mrs. Fred D. Houghten
Dr. and Mrs. James V. Huebner
Mary E. Huttenlocher
Illco Toy Co. USA, Inc.
Mr. and Mrs. E. Ingalls
Interiors by Design of Rochester
John R. and Billie M. Ireland
Charles R. Jaskolski
Mr. and Mrs. H. Wade Jennings
Mr. and Mrs. Robert J. Jocis
Mrs. Robert M. Johnson
Dr. and Mrs. Robert Johnson
Robert and Christina Justin
Richard and Jeannette Kageff
Kimberly Travel
Terry and Joni King
Paul and Judy Kozlicki
Bruce A. Kresge
Mr. Julius Kusey
Mr. and Mrs. Edwin R. Langtry
The Larami Corp.
Mr. and Mrs. Bayard F. Lawes
Mr. Gary J. Lehman
Mark and Pat Lyon
Mr. and Mrs. Gerald MacDonald
John and Harriett MacDonald
Joan and Kerry MacVay
Manufacturers Bank
Mr. and Mrs. Mel Markwardt
Mr. and Mrs. James M. Mason
Mr. and Mrs. John H. Mathieson
Professor Emeritus George T. Matthews
Mr. and Mrs. Richard R. McCormick
Thomas J. and Sue McDowell
Mr. and Mrs. Robert J. McGarry
Patrick J. McKay
McKibbin and Rossi, PC.
Susan D. Meadows
Ralph Mechler
Mr. and Mrs. George Mercer
Dr. and Mrs. Joseph Messana
Mr. and Mrs. Ronald Michalak
Mr. and Mrs. Antonio Minaudo
Mr. and Mrs. Henry J. Mittelstaedt III
Mobay Corporation-Plastics Division
Mr. and Mrs. Douglas E. Monks
Mr. and Mrs. Craig Moorhead
Dick and Dayle Morrissey
Mr. and Mrs. Arvin Mueller
Mr. and Mrs. Robert W. Navarre
Marilyn P. Nix
Mr. and Mrs. Frank J. O'Reilly
Mr. and Mrs. Roger D. Olson
Owens/Corning Fiberglass-Thomas
DeGroff
Dr. and Mrs. Andrew Pasternak
Richard and Julie Pavelek
Mr. and Mrs. Gene Payne
Mr. and Mrs. Bruce Peters
Charles Peterson
Mr. and Mrs. Richard Petrilli
David and Carolyn Phelps
Robert Pietrzyk

Mr. and Mrs. Vern Pixley
Plante and Moran
Mr. and Mrs. George Poffenberger
Robert and Sharon Potere
Potere-Modetz Funeral Home
Mr. and Mrs. James Preston
Mr. and Mrs. Robert Preston
Mr. and Mrs. Jerry K. Pruitt
Mr. and Mrs. Thomas J. Przybylski
Michael and Shelia Reed
Robert and Stanley Reiter
Frank Rewold and Son, Inc.
Robert and Paolina Ricketts
Dr. and Mrs. Ulrich Ringwald
Robert Rose Jewelers
Gerry Rosenthal, Gerry Sales Company
Mr. and Mrs. William A. Rosso
Mr. and Mrs. Gary L. Rudin
Mr. and Mrs. Dennis B. Ruen
Mr. and Mrs. Karl Schettenhelm
Mr. and Mrs. Wilhelm A. Schmelzer
Dr. and Mrs. John Schultz
Mr. and Mrs. James L. Scovic
Dr. and Mrs. Ronald Sherman
Mr. and Mrs. Melvyn D. Shewach
Mr. and Mrs. Michael Skiles
Mr. and Mrs. James A. Smalley
Drs. Joel and Kathleen Smiler
D. J. Steele and Associates, Inc.
Mr. and Mrs. Hubert B. Stern
Nathalie M. Stevenson
Mr. and Mrs. David Stinson
Jack and Joanne Stroebel
Mr. and Mrs. Melih Tan
Lawrence and Suzanne Ternan
James R. Thomas Associates, Inc.
Mr. and Mrs. Craig M. Thornton
Dr. and Mrs. Gene Timm
Mr. and Mrs. Jerald Tranzow
Tom and Jan Tyler
Brian G. Tyler, D.D.S.
Mr. and Mrs. J. Terry Upton
Tom Varner
Mr. Stephen T. Viggiano
Mr. and Mrs. William M. Walker III
Mr. and Mrs. Otis N. Walton
Gary M. Wetstein
Mr. and Mrs. Stanley L. Wilson, Jr.
Mr. and Mrs. Ralph Woodbury
Mr. and Mrs. Harlan F. Worden
Mr. and Mrs. Frank K. Zinn
Mr. Robert J. Zobl

We regret the omission of those names received too late for publication

DETROIT SYMPHONY *Orchestra*



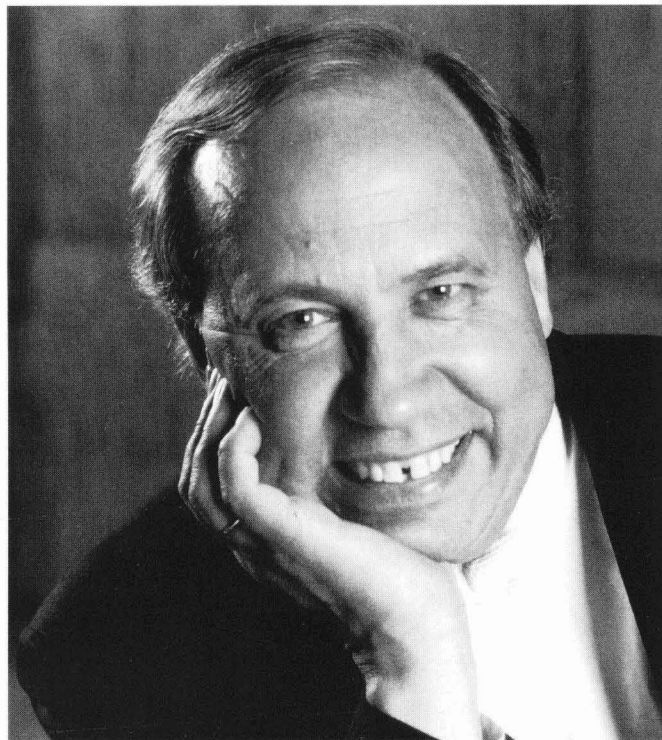
GUNTHER HERBIG
Music Director

Since moving to the United States in 1984 to become the music director of the Detroit Symphony Orchestra, Gunther Herbig has appeared as guest conductor with the major American and European orchestras. In addition to his music directorship with the Detroit Symphony Orchestra, he holds the post of music director designate with the Toronto Symphony Orchestra, with whom he recently performed two highly-acclaimed concerts in New York's Carnegie Hall. He begins his tenure as music director of the Toronto Symphony in September 1990.

Gunther Herbig's debut with the Detroit Symphony Orchestra was at Meadow Brook in June 1983. Highlights of his Meadow Brook performances with the orchestra over the following seasons include collaborations with such world-renowned artists as Claudio Arrau, Philippe Entremont, Malcolm Frager, Itzhak Perlman, and Richard Stoltzman. In addition, he conducted the world premiere of Ellen Taffe Zwilich's Concerto for Piano and Orchestra in June 1986. All-Tchaikovsky, all-Beethoven, and all-Mendelssohn concerts were also performed, including a unique performance of Mendelssohn's incidental music to the Shakespeare classic *A Midsummer Night's Dream*.

Maestro Herbig has taken the Detroit Symphony Orchestra on tour several times to the major east-coast concert halls, and in early 1989 led the Orchestra on a triumphant 14-city European tour. It is due to his dedicated leadership that the Detroit Symphony Orchestra is one of the world's greatest orchestras, maintaining its artistic quality throughout his tenure as music director.

For his dedicated commitment to the organization, Detroit Symphony Orchestra Hall, Inc. would like to thank Maestro Herbig as he continues his artistic career with the Toronto Symphony Orchestra.



NEEME JÄRVI
Music Director Designate

In January 1990, Detroit Symphony Orchestra Hall announced the appointment of internationally-acclaimed conductor Neeme Järvi as 11th music director of the Detroit Symphony Orchestra beginning September 1, 1990. Mr. Järvi first conducted the Detroit Symphony Orchestra in 1983 at Meadow Brook, and since then has appeared in Detroit as guest conductor on many occasions, including a triumphant two weeks of concerts following his January appointment. During the 1990-91 season, he will conduct eight weeks of classical subscription concerts, a New Year's Eve Gala "Night in Old Vienna," and two weeks during the summer of 1991 at Meadow Brook.

Born in Tallinn, Estonia, Mr. Järvi has become well-known to music lovers around the world through his more than 150 recordings and his guest appearances with many major orchestras. He made his American orchestral debut with the New York Philharmonic within a month after his immigration to the United States in January 1980, and he first performed in Detroit conducting the Metropolitan Opera's performances of *Samson et Dalila*. He currently holds the post of principal conductor of the Gothenburg Orchestra of Sweden, and is conductor laureate of the Scottish National Orchestra.

Mr. Järvi joins the DSO at a critical time in its history, when remarkable strides have been made toward the revitalization of the organization. Following its return to the newly renovated Orchestra Hall last fall, the Orchestra has been playing to full houses and has seen an unprecedented show of community support. Under Mr. Järvi's leadership, the DSO will begin its 77th season with a fresh and creative look to its programs and roster of guest artists. His commitment to the music of American composers is well represented, as is his dedication to bringing new and exciting performances to Detroit audiences.

Stephen
Resident

First V

Emmanuel
Concert

Katherine

John Hug
Associa

Joseph G

Assistan

Walker L

Edison F

Beatriz B

Margueri

Derek Fr

Alan Ge

Elias Frie

Malvern

Richard I

Bogos M

Linda S

Ann Ou

LeAnn T

Margaret

Gordon

Concer

Second

Geoffrey

Felix Res

Alvin S

Lillian F

Ronald F

Lenore S

Walter M

Roy Ben

Thomas

Yien Hu

Robert M

Jacob Ro

Bruce Str

Joseph S

James W



+Prin

DETROIT SYMPHONY ORCHESTRA

GUNTHER HERBIG

Music Director

Music directorship endowed by the Kresge Foundation

NEEME JÄRVI

Music Director Designate

Stephen Stein
Resident Conductor

Dr. Leslie B. Dunner
Assistant Conductor

Eric Freudigman
Director of Choruses

Erich Kunzel
Pops Music Advisor

First Violins

Emmanuelle Boisvert +
Concertmaster
Katherine Tuck Chair
John Hughes
Associate Concertmaster
Joseph Goldman
Assistant Concertmaster
Walker L. Cislak/Detroit
Edison Foundation Chair
Beatriz Budinsky*
Marguerite Deslippe*
Derek Francis
Alan Gerstel
Elias Friedenzohn*
Malvern Kaufman*
Richard Margitza*
Bogos Mortchikian*
Linda Snedden-Smith*
Ann Ourada Strubler*
LeAnn Toth*
Margaret Tundo*
Gordon Staples
Concertmaster Emeritus

Second Violins

Geoffrey Applegate +
Felix Resnick + +
Alvin Score
Lillian Fenstermacher
Ronald Fischer*
Lenore Sjoberg*
Walter Maddox
Roy Bengtsson
Thomas Downs
Yien Hung*
Robert Murphy*
Jacob Robbins*
Bruce Smith*
Joseph Striplin*
James Waring*

Violas

Alexander Mishnaevski +
James VanValkenburg + +
Philip Porbe
LeRoy Fenstermacher
Hart Hollman
Walter Evich
Gary Schnerer
Catherine Compton
David Ireland
Glenn Mellow
Darryl Jeffers

Violoncellos

Italo Babini +
James C. Gordon Chair
Marcy Chanteaux + +
John Thurman
Mario DiFiore
Robert A. Bergman*
Barbara Hassan
Debra Fayroian*
Carole Gatwood*
Haden McKay*
Paul Wingert*

Basses

Robert Gladstone +
Stephen Molina + +
Maxim Janowsky
Linton Bodwin
Stephen Edwards
Craig Rifel
Donald Pennington
Marshall Hutchinson
Richard Robinson

Harp

Patricia Masri-Fletcher +
Winifred E. Polk Chair

Flutes

Ervin Monroe +
Women's Association
for the DSO Chair
Shaul Ben-Meir
Robert Patrick + +
Clement Barone

Piccolo

Clement Barone

Oboes

Donald Baker +
Shelley Heron
Brian Ventura + +
Treva Womble

English Horn

Treva Womble

Clarinets

Theodore Oien +
Robert B. Semple Chair
Douglas Cornelsen
Laurence Liberson + +
Oliver Green

E-flat Clarinet

Laurence Liberson

Bass Clarinet

Oliver Green

Bassoons

Robert Williams +
Victoria King
Paul Ganson + +
Lyell Lindsey

Contrabassoon

Lyell Lindsey

French Horns

Eugene Wade +
Bryan Kennedy
Corbin Wagner
Willard Darling
Mark Abbott + +
Keith Vernon

Trumpets

Ramon Parcells +
Kevin Good
Alvin Belknap + +
William Lucas

Trombones

Raymond Turner +
Joseph Skrzynski
Nathaniel Gurin #
Randall Hawes

Bass Trombone

Randall Hawes

Tuba

Wesley Jacobs +

Timpani

Salvatore Rabbio +
Robert Pangborn + +

Percussion

Robert Pangborn +
Norman Fickett + +
Raymond Makowski
Sam Tundo

Librarians

Elkhonon Yoffe
Charles Weaver, *Assistant*

Personnel Managers

Oliver Green
Stephen Molina, *Associate*

Chairman of the Board
Robert S. Miller, Jr.

Executive Director
Deborah Borda



+Principal ++Assistant Principal #Acting Principal *These members may voluntarily revolve seating within the section on a regular basis.

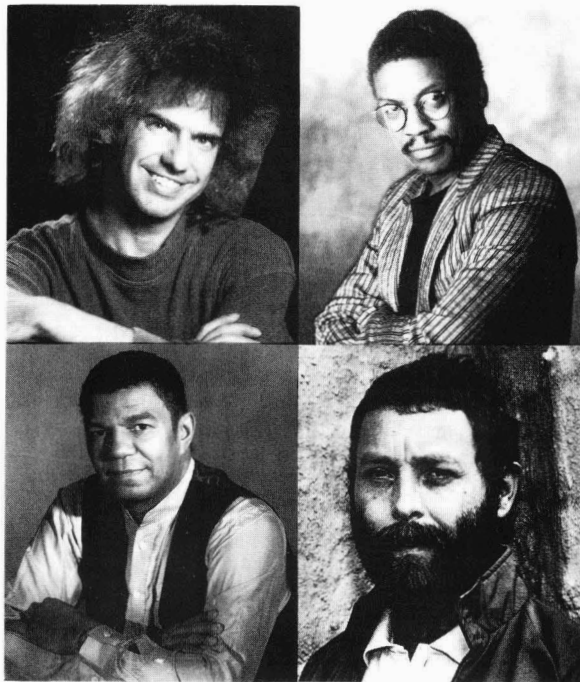
SATURDAY, JUNE 16

Children's Concert
Fred Penner
11 a.m.



TUESDAY, JUNE 19

Pat Metheny **Herbie Hancock**
Jack DeJohnette **Dave Holland**



FRIDAY, JUNE 22

Ann Jillian **Marvin Hamlisch**



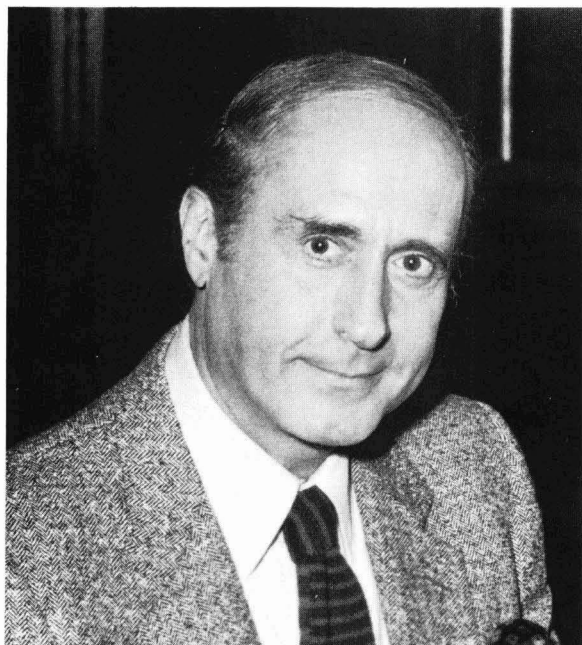
SATURDAY, JUNE 23

Children's Concert
The Song Sisters
11 a.m.



SATURDAY, JUNE 23

Henri Mancini
Detroit Symphony Pops



TUESDAY, JUNE 26

George Benson



WED., JUNE 27

Rickie Lee Jones
Lyle Lovett



THURSDAY, JUNE 28

Milton Nascimento



SATURDAY, JUNE 30

Children's Concert
Bob McGrath of "Sesame Street"
11 a.m.



SATURDAY, JUNE 30

Harry Connick, Jr.



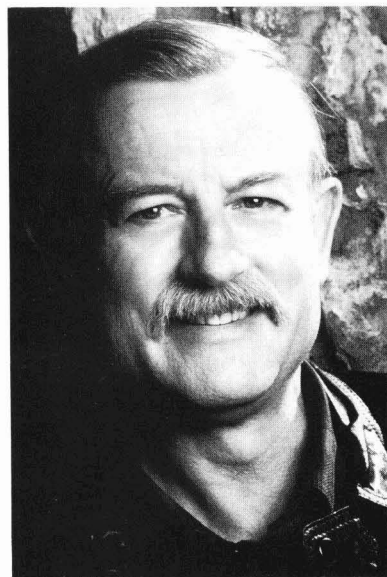
TUESDAY, JULY 3

The Platters The Diamonds
Little Anthony The Dixie Cups
Fireworks follow the show



FRI.-SAT., JUL. 6-7

Roger Whittaker



WEDNESDAY, JULY 11

"Serious Fun with the DSO"
7:30 p.m.

THURSDAY, JULY 12

Garrison Keillor
Chet Atkins



SATURDAY, JULY 14

Children's Concert
Odetta & Friends
11 a.m.



SATURDAY, JULY 14

John McGlinn
Meadow Brook Festival Orchestra



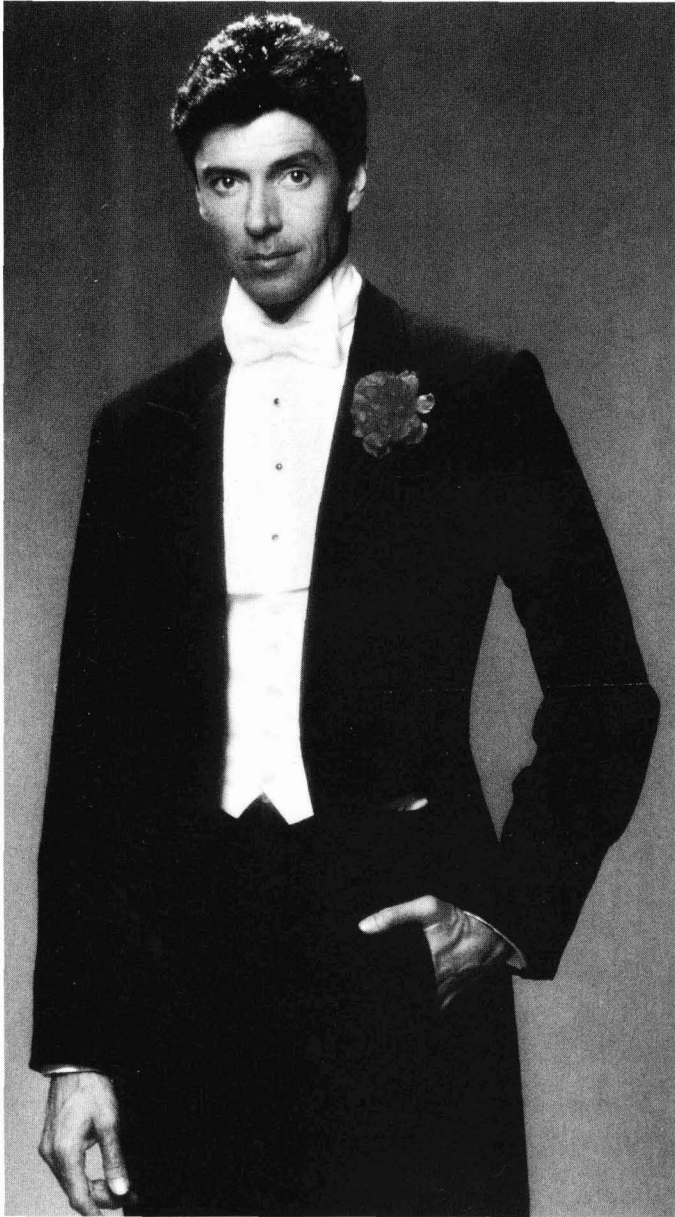
SUNDAY, JULY 15

"The Other Side of Daytime"
With the stars of
"The Young & The Restless"
2 p.m.

BYE BYE BIRDIE

A Musical Comedy

July 17-21

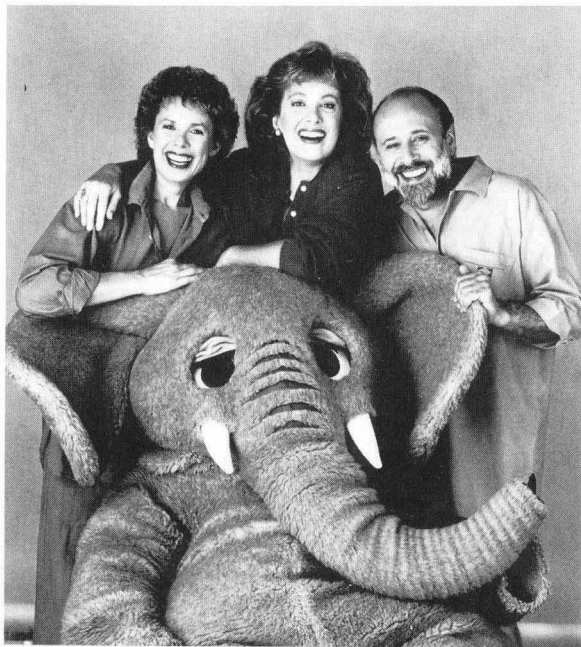


Book by Michael Steward
Music by Charles Strouse
Lyrics by Lee Adams

Tommy Tune is a major force in the world of professional theatre as a director, choreographer, actor and song-and-dance man. Born in Wichita Falls, Texas and raised in Houston, he attended Lon Morris Junior College and the University of Texas at Austin. He made his Broadway debut in the musical BAKER STREET. His directing and choreographing credits include THE BEST LITTLE WHOREHOUSE IN TEXAS, A DAY IN HOLLYWOOD/A NIGHT IN THE UKRAINE, THE CLUB, CLOUD 9, NINE and MY ONE AND ONLY. He is the recipient of five Tony Awards (the only person in theatrical history to win in four different categories), five Drama Desk Awards, two Obies and the Dance Magazine Award for Lifetime Achievement. Mr. Tune has appeared on "Irving Berlin's 100th Birthday Special," "The Presidential Inaugural Gala" and toured the United States, Canada, Monte Carlo and Russia in concert. His new musical, GRAND HOTEL opened on Broadway at the Martin Beck Theatre on Sunday, November 12, 1989.

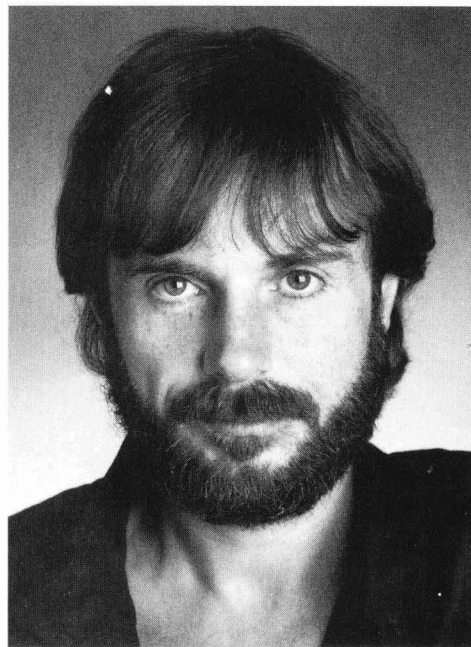
SUNDAY, JULY 22

Children's Concert
Sharon, Lois & Bram
1 p.m. & 4:30 p.m.



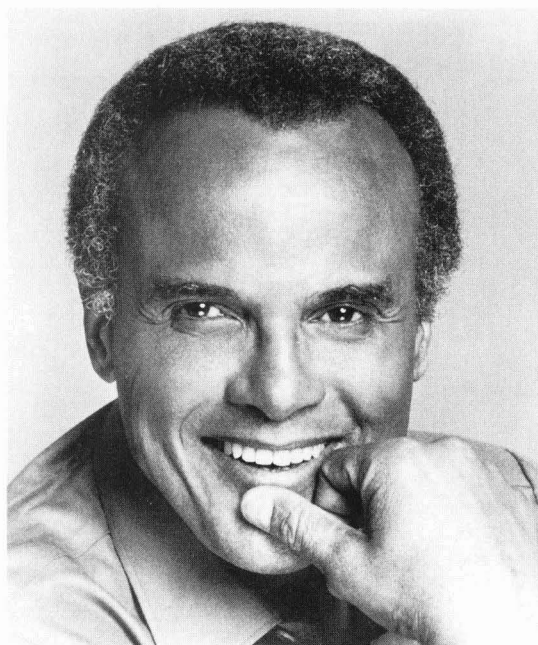
MONDAY, JULY 23

Jean-Luc Ponty



TUESDAY, JULY 24

Harry Belafonte



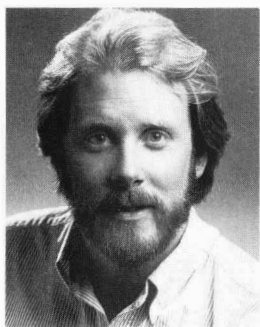
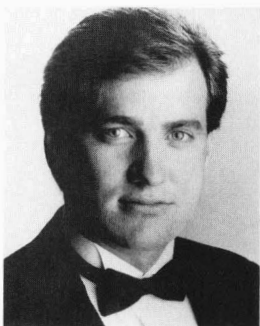
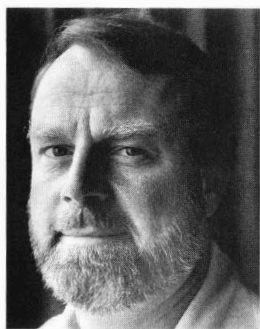
WEDNESDAY, JULY 25

"New Vaudeville"
Fred Garbo The Wright Brothers



SATURDAY JULY 28

Detroit Symphony Pops
Erich Kunzel, conductor
Kathleen Brett Gabrielle Prata
Benoit Boutet Lewis Dale von Schlanbusch



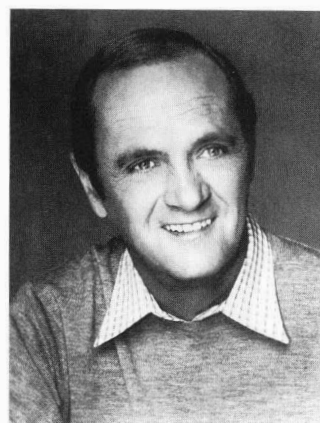
FRIDAY, JULY 27

Chubby Checker The Drifters
Gary U.S. Bonds The Tokens



THURSDAY, AUG. 2

Bob Newhart

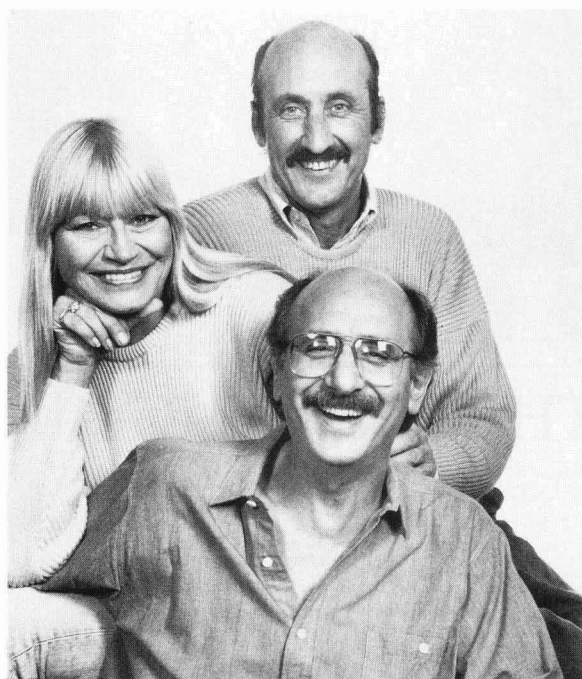


SATURDAY, AUG. 4

Children's Concert
Linda Arnold
&
Frank Cappelli
11 a.m.

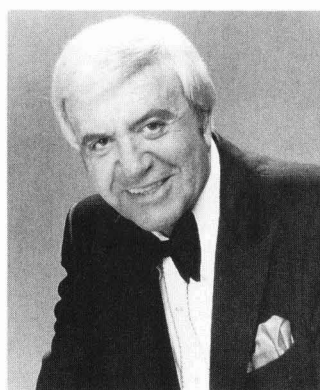
SATURDAY, AUG. 4

Peter, Paul & Mary



SUNDAY, AUG. 5

"Big Band Sounds"
Don Cornell The Pied Pipers
Tex Beneke & His Orchestra



MONDAY, AUG. 6

Basia

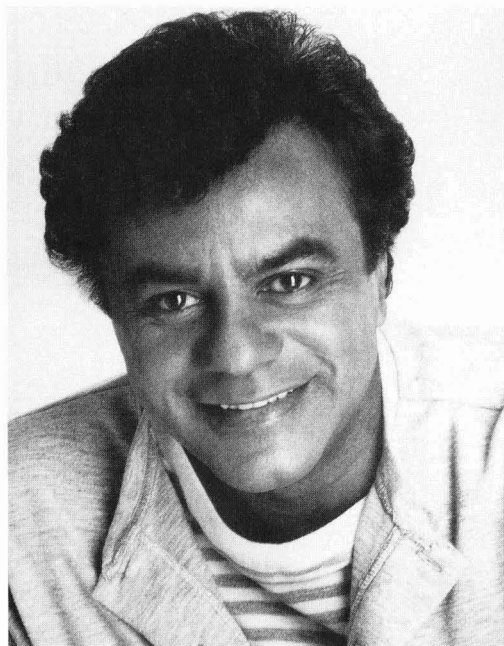
WEDNESDAY, AUG. 8

The Everly Brothers
Carl Perkins



FRI.-SAT., AUG. 10-11

Johnny Mathis



WEDNESDAY, AUG. 15

Tony Bennett
with
The Count Basie Orchestra



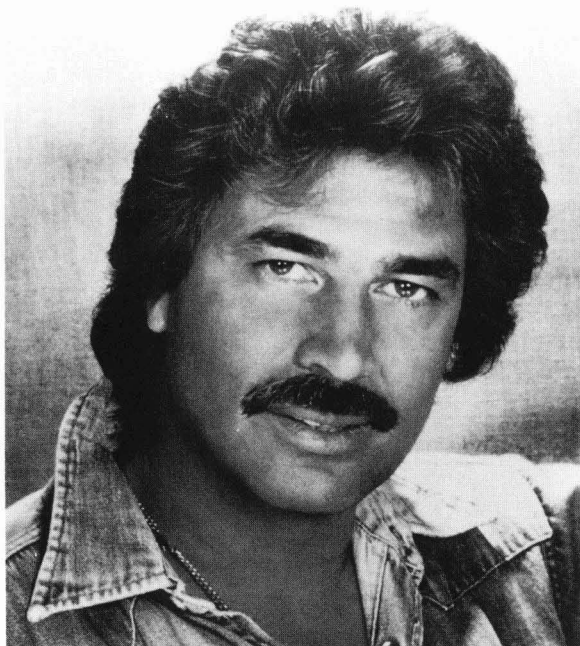
THURSDAY, AUG. 16

"Santa's Summertime Stage"
7:30 p.m.



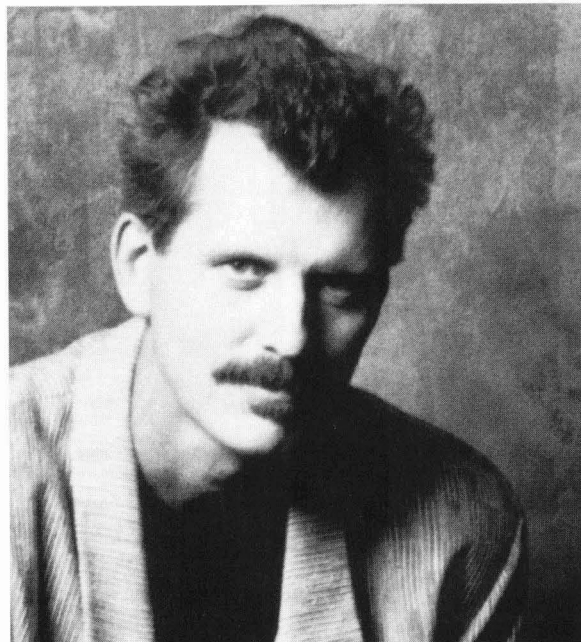
FRIDAY, AUG. 17

Engelbert Humperdinck



SATURDAY, AUG. 18

Michael Franks



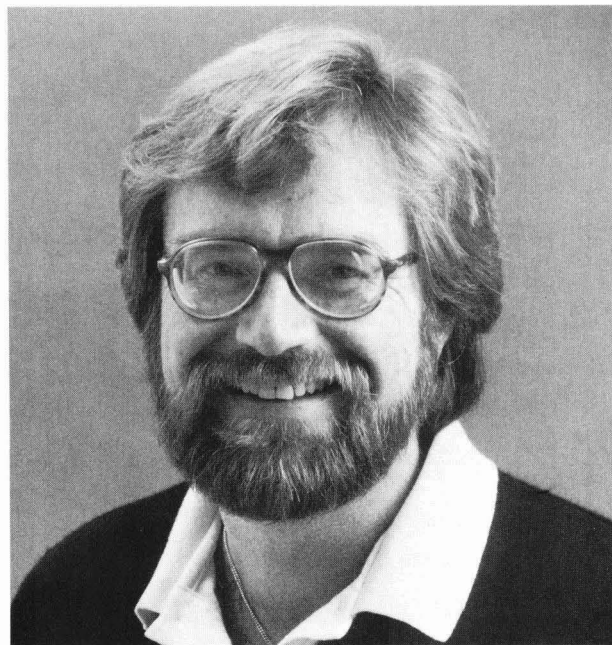
SUNDAY, AUG. 19

Lou Rawls



TUESDAY, AUG. 21

Mannheim Steamroller
"The Music of Nature:
A Concert for Yellowstone"
Meadow Brook Festival Orchestra



Chip Davis, composer

FRI-SAT., AUG. 24-25

Laser Light Spectacular!
Richard Kapp, conductor
Meadow Brook Festival Orchestra
8:30 p.m.

SUNDAY, AUG. 26

"The Ghost of the Paris Opera"
with Laser Lights
Charles Greenwell, conductor
Meadow Brook Festival Orchestra
8:30 p.m.

WEDNESDAY AUG. 29

Fats Domino
Hank Ballard & The Midnighters
Bill Haley's Comets



1990 MAJOR DONORS

TO

THE MEADOW BROOK MUSIC FESTIVAL AND THEATRE

A. T. & G. Company, Inc.
 Aaron's Automotive Products, Inc.
 Mrs. Richard F. Adair*
 Alcoa Fujikura Ltd. Automotive Div.
 Allied-Signal Automotive
 American Sunroof Company
 Arthur Anderson & Company
 Argent Automotive Systems
 BASF Corporation — Coatings & Inks Div.
 Mr. and Mrs. William B. Bachman, Jr.
 Mr. and Mrs. Howard P. Baum
 Becker Group Management Division
 Bendix Safety Restraints Div./
 Allied Automotives
 Borg Warner Automotive, Inc.
 The Bott Group, Inc.
 Briggs & Stratton Technologies
 Mr. and Mrs. William H. Broadus*
 Mr. and Mrs. David J. Brocco*
 Mr. and Mrs. George A. Brundrett*
 Buckley Manufacturing Co.
 The Budd Company
 Mrs. Rosalie K. Butzel
 Mr. and Mrs. Ralph A. Caponigro*
 Centra/Principals Development Fund
 Mr. and Mrs. L. Paul Chastney*
 The John Christian Company
 Chrysler Corporation Fund
 CMI International, Inc.
 Mrs. Frederick K. Cody
 Cold Heading Company
 Mr. and Mrs. James E. Collins*
 Mr. and Mrs. Harold R. Coltman*
 Complete Auto Transit, Inc. — Ryder
 System Inc.
 Compuware Corporation
 Continental Plastics Company
 Mr. and Mrs. Ronald H. Cooley*
 Mr. and Mrs. John O. Cracium*
 Creative Industries Group, Inc.
 Mr. and Mrs. John R. Curtin*
 Mr. and Mrs. David W. Dale*
 Dana Corporation — Corporate Offices
 Mr. and Mrs. Fred E. Darter*
 Dayton Hudson Department Store Company
 Dearborn Steel Center, Inc.
 Mr. and Mrs. Leonard J. Decker
 Deloitte and Touche
 ITW Deltar Division
 Mr. and Mrs. Ronald J. Dichtel*
 Doehler-Jarvis
 Donnelly Corporation
 E & L Transport Co.
 Eagle Packaging Corporation
 Eaton Corporation
 Mr. and Mrs. John T. Eby
 Jack and Betty Edman
 Edwards Industries, Inc.

Mr. and Mrs. Patrick A. Elwell*
 Exide Corporation
 Feblo Incorporated
 Bridgestone/Firestone Trust Fund
 Fleet Carrier Corp. — Automotive Carrier Div.
 Flight Systems, Incorporated
 Ford Motor Company Fund
 Mr. Harold Foreman*
 FormTech Company — Div. of Masco Ind.
 Frisbie Moving & Storage Company
 GenCorp
 General Motors Foundation
 General Safety Corporation
 Mr. and Mrs. Kenneth L. Gertz*
 Ghafari Associates, Inc.
 Giffels Associates, Inc.
 Mr. and Mrs. Edward A. Golick*
 Goodyear Tire & Rubber Company
 Grand Trunk Western Railroad
 John and Jane Grettenberger
 Mr. and Mrs. Leonard R. Griffin*
 Mr. and Mrs. William J. Guay*
 Mr. and Mrs. Charles F. Hatter*
 Mr. and Mrs. Ross M. Haun
 Mr. Richard H. Headlee
 Herrick Foundation
 Hillsdale Tool & Manufacturing Co., Inc.
 Clarence & Jack Himmel Foundation
 Howell Industries, Inc.
 Intermet Foundries, Inc.
 Mr. and Mrs. Thomas G. Jenuwine*
 Mr. and Mrs. Kenneth D. Johnston*
 Jones Transfer Company — Gary L. White
 Kasle Steel Corporation —
 The Kasle Foundation
 Kaul Glove & Manufacturing Company
 Kelsey-Hayes Company — Fruehauf Corp.
 Kenmar Corp. — Kenneth F. Elliott
 Mr. and Mrs. Michael W. Kerby*
 KPMG Peat Marwick
 Mr. William C. Kruse, Jr.*
 Dr. and Mrs. Walter J. Kubinski*
 Lamb Technicon
 Lear Siegler Seating Corp.
 Lobdell-Emery Manufacturing Company
 Dr. and Mrs. Berton L. London*
 MacLean-Fogg Company
 Mr. and Mrs. John P. Maloney*
 Mr. and Mrs. John H. Marlette*
 Masco Corporation
 Mr. and Mrs. Kenneth J. McCarter*
 Mr. and Mrs. Paul McClung
 Mr. and Mrs. Donald D. McCready*
 Mr. and Mrs. Robert J. McGarry*
 Meadow Brook Music Festival
 Women's Committee
 Michelin Tire Corporation
 Michigan Bell — An Ameritech Company

Midway Products Corporation
 Steve and Maggie Miller
 Mitsubishi Motors America, Inc.
 Monroe Auto Equipment
 Morris Associates
 Motorola Inc., AIEG
 Mrs. Charles S. Mott*
 Tom and Emily Murphy
 Mr. and Mrs. Richard D. Murray, Jr.*
 NCR Corporation
 National Bank of Detroit
 Nippondenso Sales, Inc.
 Northern Engraving Corporation
 NTN Bearing Corporation of America
 Mr. and Mrs. Charles A. O'Brien*
 Mr. and Mrs. Robert T. O'Connell
 Mr. John L. O'Connor*
 PPG Industries Foundation
 Packaging & Handling Supplies
 Mr. and Mrs. Donald A. Pais
 Pak-Rite Industries, Inc.
 Mr. and Mrs. Theodore P. Paulnock*
 Pioneer Engineering & Manufacturing Co.
 Prince Corporation
 Progressive Tool & Industries Company
 Mr. and Mrs. David Charles Prybys*
 Quasar Industries
 James and Caye Randolph
 Mr. and Mrs. Lloyd E. Reuss*
 Ritter-Smith Incorporated
 Mr. and Mrs. John D. Rock
 Rockwell Int'l Heavy Vehicle Components
 Operations
 Mr. and Mrs. William E. Rogerson*
 Mr. and Mrs. Irving Rose*
 Mr. Louis R. Ross*
 Mr. and Mrs. David W. Scott*
 SEMEC Incorporated
 Mr. and Mrs. Stephan Sharf*
 Siegel-Robert Inc.
 A. G. Simpson Company Ltd.
 George and Mable Slocum Foundation
 Mr. and Mrs. Kenneth F. Smith
 Southern Pacific Transportation Company
 Dr. and Mrs. Fredrick J. Stare*
 Mr. and Mrs. Charles R. Steele*
 Sur-Flo Plastics & Engineering, Inc.
 Mr. Alvin T. Swope
 Mr. and Mrs. David T. Tasker
 Textron Inc. — Davidson Interior Trim
 J. Walter Thompson U.S.A.
 Tokico America, Inc.
 The Torrington Company
 Troy Design Services
 Mrs. George T. Trumbull*
 TRW Steering & Suspension Division
 Mr. and Mrs. Charles S. Tuesday
 Unisys Corporation

*Members of the Oakland University President's Club

We regret the omission of those names received too late for publication.

1990 MAJOR DONORS

TO

THE MEADOW BROOK MUSIC FESTIVAL AND THEATRE

(Cont'd)

Brad and Sue Upton
Mr. and Mrs. Duane W. Utech*
R.A. Van De Velde & Associates
Mr. W. Michael VanHala
VEMCO, Ind./Venture Industries
Volkswagen Canada Inc.

Hiram Walker & Sons, Inc. — Mr. Art Robbie
Walker Manufacturing Company
Mr. and Mrs. Howard E. Weimer*
Mr. Thomas L. Werth*
Mr. and Mrs. Raymond W. West*
White Tower Laundry & Cleaners Co.

Wickes Manufacturing — Automotive &
Industrial Group
Lula C. Wilson Trust Fund
Wynn's Climate Systems, Inc.
Mr. and Mrs. George W. Yeokum*
Young & Rubicam — Detroit
ZF of North America, Inc.

We regret the omission of those names received too late for publication.



CONTRIBUTIONS TO THE MEADOW BROOK MUSIC FESTIVAL AND THEATRE

SPONSORS

ANR Freight System, Inc.
Active Tool & Manufacturing Company, Inc.
Allied Products Corporation
American Fibril, Inc.
Leasway Transportation Corp. — Special Trans. Group
Arvin North American Automotive
Atlas Tool Incorporated
Bailey Corporation
Bartech, Inc.
Mr. and Mrs. J. T. Battenberg III
Mr. and Mrs. Philip E. Benton, Jr.
Robert Bosch Corporation
Gerard Braun
Art Brockman Incorporated
Canadian General Tower, Ltd.
Champion Laboratories, Inc.
Champion Parts, Inc.
Donald L. Chenoweth
Mr. and Mrs. Donald S. Chenoweth*
Chicago & North Western Transportation Co.
Coat-It, Incorporated
Columbus Auto Parts
Corrigan Moving Systems
The Crown Division of Allen Group
Mr. and Mrs. John D. Davies
Mr. H. L. Davis
Dayton-Walther Corporation
Delwar Corporation
Detroit Center Tool, Inc.
Mr. and Mrs. Ron Dork
Mr. James A. Durkin
Van Wormer Industries
Eppert Oil Company
Excel Industries, Inc.
Fabco (Fabricated Steel Products)
Federal Screw Works
Fetz Engineering Company
Mr. and Mrs. David H. Finkel
Dr. and Mrs. Robert A. Frosch
Gaylord Container
Hi-Tech Tool Industries, Inc.
Himont U.S.A. Inc.
Hofley Manufacturing Company
Mr. and Mrs. Robert G. Howard, Jr.*
Huron — St. Clair Company
Mr. and Mrs. Stuart C. Hyke
ITW Deltar
Jacobs Industries, Inc.
Ferro Manufacturing Corp. — Division Johnson Controls
Johnson Controls — Automotive Systems Group
Kenval Products Corporation
KSR Industrial Corporation
K. J. Kuna
Landis Manufacturing Company, Inc.

William and Mary Large
Mr. and Mrs. Clinton D. Lauer
Lintas: Ewald-Campbell
Logghe Stamping Company
Mr. William J. Lovejoy
MacDonald's Industrial Products
Magna International of America, Inc.
Maremont Corporation
Mr. Ralph McCallum
Mr. and Mrs. John E. Mischi
Mr. and Mrs. Lawrence C. Mitchell
Molloy Manufacturing Company
MPD Welding, Incorporated
MTD Products Inc.
Douglas D. Murphy & Associates Inc.
Mr. Bert Long — OES Associates
Mr. and Mrs. J. Timothy O'Connor
C. S. Ohm Manufacturing Company
Oxford Speaker Company — Division Automotive Design
PPG Industries, Inc. — Adhesives & Sealants
Mr. and Mrs. John A. Porter*
Mr. and Mrs. Barry D. Price
Pridgeon & Clay, Inc.
Proto-Craft Model & Mold, Inc.
Pylon Mfg.
Radar Industries, Inc.
RCO Design Technology Inc.
Mr. and Mrs. James M. Rhadigan
Mr. and Mrs. John E. Rhame
Mr. and Mrs. John J. Riccardo*
Ring Screw Works
Jim Robbins Company
Ronart Industries, Inc.
Mr. and Mrs. Arthur W. Saltzman
Mr. and Mrs. Frank L. Schweibold
Mr. and Mrs. John C. Secrest*
Mr. F. Alan Smith
SPX Foundation — Kent Moore
E. R. St. Denis & Sons Ltd.
Superior Plastic, Inc.
Sure Fit Metal Products, Inc.
Mr. Paul Tatseos
Teledyne Monarch Rubber
Howard Ternes Packaging Company
Trico Products Corporation
Troy Mills, Inc.
Valeo Automotive Inc.
Mr. and Mrs. Clifford J. Vaughan
Mr. and Mrs. Joseph C. Walker
Wellington Manufacturing, Inc.
Wolf Sanitary Wiping Cloth

CENTURY CLUB

Mr. Bruce H. Snell/ABF Freight System, Inc.
Mr. and Mrs. Donald W. Ableson
Mr. and Mrs. Charles A. Amann

Mr. Paul Ayres
Mr. and Mrs. Charles W. Babcock
Vincent and Marilyn Bandurski
Mr. David W. Barney
Mr. Michael J. Basford
Jacob M. Bass
Mr. and Mrs. E. T. Baumgartner
Mr. and Mrs. Ronald L. Bell
Mr. Ralph Bergemann
Mr. Robert L. Bierley
Edward J. and Loretta R. Biskup
Mr. George Booth
Robert and Diane Booth
Mr. and Mrs. Donald T. Breen
Mr. and Mrs. Thomas K. Brichford
Mr. Guy D. Briggs
Mr. Charles Edward Brown
Mr. and Mrs. H. Eugene Brown
Mr. James A. Burk
Mr. Louis J. Burnett
Terry Burton
Jim Blough — Camcar/Textron
Michael H. Camp
Mr. Keith G. Campbell
Mr. and Mrs. Dennis M. Cantwell
Mr. Thomas P. Capo
Mr. and Mrs. Louis S. Carrio, Jr.
Mr. Grant M. Carrithers
John J. and Frances Casey
Certainteed Corporation
Richard H. Johnson — Champion Spark Plug
Mr. and Mrs. James D. Cirar
Mr. and Mrs. James R. Clancy
Mr. Dale E. Claudepierre
Mr. Frederick K. Cody, Jr.
Mr. and Mrs. P. J. Coletta
Mr. Robert E. Collins
Mr. and Mrs. Richard E. Conn
Mr. and Mrs. Timothy A. Costello
Mr. Charles A. Cotten
Mr. and Mrs. Thomas A. Cover
Mr. James J. Cuccello
Mr. and Mrs. John C. Davis
Mr. and Mrs. John DeCarlo*
Mr. and Mrs. Gerald L. Decker
Mr. John E. Decou, Jr.
Darryl J. DeLeonardis
Mr. and Mrs. Steven E. Deneroff
Mr. William J. Dennig
Mr. George A. Denton
Mr. and Mrs. F. E. Devendorf
Gary & Elizabeth Dickinson
Mr. and Mrs. Edmond J. Dilworth, Jr.
Mr. Darrel E. Dinger
Mr. and Mrs. Richard T. Donaldson
Richard M. Donnelly
Mr. Wayne S. Doran
Don and Jean Downham

We regret the omission of those names received too late for publication.

CONTRIBUTIONS TO THE MEADOW BROOK MUSIC FESTIVAL AND THEATRE

CENTURY CLUB (Cont'd)

- | | | |
|---------------------------------|----------------------------------|-----------------------------------|
| Mr. Peter Dryer | Mr. Donald C. Huss | Mr. William L. Moore |
| Mr. Keith W. Dunbar | Terry Burton — Inland Steel | E. Alan and Barbara R. Moorhouse |
| Mr. and Mrs. William F. Eagen | R. M. Jacobs | Mr. and Mrs. Nils L. Muench |
| Mr. T. J. Elsholz | Blaine Jenkins | John and Mary Musselman |
| Martin Evelev | Mr. Charles M. Jordan | Mr. and Mrs. Michael E. Naylor |
| Mr. and Mrs. George C. Fenner | Mr. and Mrs. Richard W. Judy | Mr. and Mrs. Loring F. Nies |
| Mary and Warren Finken | Joseph and Susan Jurkiewicz | Mr. R. K. Nolan |
| Mr. Eugene H. Flegm | Diane L. Kaye | Mr. and Mrs. Gary D. Norton |
| Mr. Robert C. Folbigg | Mr. John P. Kelly | Mr. and Mrs. John R. O'Brien |
| Mr. George W. Ford | L. E. Kemp, Jr. | Mr. and Mrs. James G. O'Connor |
| Mr. George G. Fox | James M. Kessler | Mr. Richard Oke |
| Dr. and Mrs. Wayne France | Mr. R. W. Kirkman | Donald and Sandra O'Malley |
| Mr. and Mrs. Carl Freeman | Mr. Thomas R. Klipstine | Mr. and Mrs. J. E. Orndorff |
| Dr. and Mrs. Roger Fruechte | Mr. Gerald A. Knechtel | Mr. and Mrs. T. E. O'Rourke |
| Mr. James L. Fry | Ms. Carol J. Knorr | Bobby E. Oswalt |
| Mr. Carl K. Gano | Mr. Thomas R. Kolhoff | Jerry and Rita Palmer |
| Mr. and Mrs. Robert E. Garlo | James W. and Rita M. Kolp | Mr. Frank T. Palopoli |
| Mr. and Mrs. John W. Gelder | Joyce Kornbluh | Mr. Harry J. Pearce |
| P. R. Gerosa | Mr. and Mrs. Gary D. Kowalski | Alejandro J. Perez |
| Mr. and Mrs. Philip Gerwert | Jerry and Beverly Kranz | Mr. and Mrs. Kenneth Peterson |
| Mr. R. K. Gibson | Mr. and Mrs. C. A. Krauss, Jr. | Mr. and Mrs. Ronald Petrella |
| Mr. Allan D. Gilmour | Mr. and Mrs. D. A. Krencicki | G. Leon Piecuch |
| Gino and Kathy Giocondi | Susan and John Kruse | Mr. and Mrs. Harold A. Poling |
| Mr. and Mrs. Michael Goldfine | Kuka Welding Systems | John and Darrah Porter |
| Mr. Dennis C. Grant | Ms. Carol Lamb | Terry and Judy Pritchett |
| Mr. and Mrs. Lee Grant | Mr. John G. Larson | Mr. and Mrs. R. C. Purcell, Jr. |
| Allen J. Green | Bill and Barbara Larson | Dennis and Connie Racine |
| Mr. and Mrs. Donald W. Griffin | Mr. Lloyd J. Lee | Mr. and Mrs. T. E. Ralph |
| G. E. Gross | Robert and Kay LeFevre | Robert W. Ranka |
| George A. Grove | Mr. Joseph H. Lehman | Dr. and Mrs. David B. Rees |
| Mr. and Mrs. E. Wray Haack | Mr. David R. Levering | Mr. John Retich |
| David F. Hagen | S. Lombardi | Mr. and Mrs. Robert L. Rewey |
| Ms. Barbara Hall | Mr. and Mrs. Robert C. Luscomb | Dennis W. Rhee |
| Jack and Marcia Hall | Mr. and Mrs. James J. Lyijynen | Fran and Ray G. Rhoton |
| Bill and Mary Alice Happel | Mr. and Mrs. Harry H. Lyon | Mr. Larry R. Rickard |
| William J. Harahan III | Mr. Fred Mack | Mr. and Mrs. Leonard J. Rinke |
| Mr. and Mrs. John W. Harless | Mr. and Mrs. Donald Makelim | Mr. John W. Risk |
| Mr. Eugene R. Harris | M. D. Mangan | Mr. and Mrs. Hugo Ritzenthaler |
| Mr. Edison J. Hart* | Elaine and Mervyn Manning | Thomas P. Robb |
| Mr. Richard Haupt | Mr. and Mrs. John A. Manoogian | Steven R. Roberts |
| Mr. Darryl B. Hazel | Mr. Anthony L. Marchio | James A. Rousseau |
| J. L. Hazen | Mr. David E. Maronek — North | Mr. Gary K. Rowley |
| Mr. and Mrs. John J. Hefe | American Lighting | Mr. and Mrs. Ronald G. Royer |
| Mr. Terry M. Heim | Mr. and Mrs. R. J. Marshall | Mr. and Mrs. Clifford L. Sadler |
| Mr. and Mrs. Joseph P. Henley | Mr. and Mrs. William G. Martin | Roger and Jean Saillant |
| Mr. Michael M. Hentgen | Mr. Richard J. Matton | William H. Sandy |
| Mr. and Mrs. Dale Hermiller | James N. Mattavi | Mr. and Mrs. J. W. Scheel |
| Mr. and Mrs. James C. Hitchcock | Mr. and Mrs. Thomas A. Maxwell | Mr. Elwood M. Schlesinger |
| Mark and Sallie Hogan | Charles L. May | Murray Schlusell |
| Mr. Brian Holland | Ned and Sandra McClurg | Mr. and Mrs. J. P. Schmidt |
| Richard Holmes | Mr. Ian A. McEwan | Mr. and Mrs. Edward Schreitmuller |
| Richard C. & Elaine Honecker | William and Shirley McKeel | Mr. Robert J. Schultz |
| Dr. and Mrs. A. F. Houchens | Mr. John W. McNulty | Mr. and Mrs. Arthur H. Scherzel |
| Mr. and Mrs. L. J. Howell | Mr. and Mrs. John G. Middlebrook | Mr. and Mrs. Robert G. Shannon |
| Mr. Richard L. Huber | Mr. and Mrs. Donald L. Miles | Edward J. Shea |
| Mr. and Mrs. Donald W. Hudler | Mr. and Mrs. John D. Miller | Mike and Brenda Sheehan |
| Wendell A. Hurd | Dennis and Martha Minano | Mr. Norman D. Sholler |
| | Mr. and Mrs. Lynn A. Minger | Ray A. Slongo |
| | Bud and Nancy Moore | Mr. and Mrs. D. Fred Smith* |

We regret the omission of those names received too late for publication.

CONTRIBUTIONS TO THE MEADOW BROOK MUSIC FESTIVAL AND THEATRE

CENTURY CLUB Cont'd)

Dr. Ira Snider
Mr. Steve Snyder
J. David Sommerville
Jim and Hilary Spittle
Dennis J. Stachelski
Mr. and Mrs. Thomas T. Stallkamp
Mr. Donald E. Staples
Mr. and Mrs. Helmut Stark
Mr. and Mrs. Richard D. Starkweather
Mr. and Mrs. Ray H. Stephens
Fred and Janet Stickel
E. and M. T. Stines
Dr. and Mrs. Thomas M. Storen
Mr. and Mrs. Daniel A. Tankersley
Mr. and Mrs. Gerald Tarquinio*
Mr. Marcus G. Tate
J. Robert Thompson
James and Marilyn Thornton
Norman and Elaine Thorpe
Mr. and Mrs. Anthony P. Thrubis
Timken Company — Mr. John Dix
Mr. Randy W. Tung
Ms. Dorothy C. Underwood
Mr. and Mrs. John P. Vacketta
Michael and Lois Valerio
Mr. Peter Van Cott
Mr. and Mrs. C. K. Vennstra
Larry Vickery
Ms. Carola Vogel
Howard & Beverly Voight
Mr. Raymond Waelchli
Mr. and Mrs. Ronald G. Wagner
Mr. Thomas J. Wagner
Jeanne and Stewart Wagner
Jackie W. Washburn
Mr. Charles J. Weathered
Mr. Robert C. Weinbaum
Mr. and Mrs. Martin E. Welch III
Mary Ann Welden
Mr. and Mrs. William E. Werner
Mr. James O. Westby
Gary A. White
Mr. and Mrs. Robert C. White
Mr. James R. Wiemels
Mr. and Mrs. Dennis F. Wilkie
Charles F. Wilkins
Mr. and Mrs. J. Michael Williams
Mr. and Mrs. James Williams
Jean and Robert Wiltsey
Robert and Linda Workman
Frank J. Zematis
William & Janet Ziecina

CONTRIBUTORS

A.M.S., Inc.
Mr. Richard E. Acosta
Adair Printing Company

Mr. and Mrs. Thomas B. Adams
Addy-Morand Machinery Company
Adronics/Elrob Mfg.
Mr. and Mrs. Norman L. Adsit
Aisin U.S.A., Inc.
James and Beverly Aitken
Ajax Tool Works Incorporated
Leonard J. Alaimo
Mr. and Mrs. James T. Alex, Jr.
William S. Bushnell
Allen Electric Supply Company
Mr. and Mrs. Thomas W. Allen
Alliance Steel, Inc.
Greg and Barbara Allushuski
Altair International, Inc.
Michael and Barbara Alter
American Metal & Plastics, Inc.
American Motor Lines, Inc.
American Transport Leasing
Mr. and Mrs. W. L. Ames
Mr. and Mrs. Edward R. Arbitter, Jr.
Mr. Glen S. Arendsen
Harold Armstrong
ASAA Technology/Component Systems, Inc.
Robert and Gale Atkins
Atochem North America
Atoma International — Aimco, Inc.
Atwood Industries
William and Doris Atwood
Automotive Moulding Company
Automotive Plastic Technologies
Auto Style Sales/Auto Style Plastics
B & M Industries Inc.
Norman E. Klein/B & W Interstate
Mr. Richard J. Baker
Mr. George F. Ball
Mr. and Mrs. Richard J. Bania
John E. Barnes
Mr. and Mrs. David E. Barnhart
Terry Barr Sales Agency, Inc.
Jack R. Barrett, Jr.
Mr. Frederick J. Bartz
Mr. Richard C. Bates
Bruce E. Baxter
Mr. Ronald E. Beck
Mr. Bernard P. Bedard
Ms. Linda S. Bedell
Mr. F. J. Beiermeister
Keith A. Bennett
Mr. Michael S. Berne
Mr. J. E. Berry
M. K. Bhatt
Mr. Nick Bianco
Mr. James Biddle
Ursula and Bob Binder
Blackwell-Conway Company
Mr. and Mrs. Rudolph W. Blatt
Burnside Manufacturing — J. J. Bocci
& Associates

Mr. and Mrs. T. A. Boltik
Mr. and Mrs. John M. Booth
Mr. John Boris
Mr. and Mrs. William M. Borowy
Mr. and Mrs. Bliss Bowman
Braun Engineering Company
Mr. Loren R. Bray
W. Z. Breer Corp.
Brencl Contractors Inc.
Mr. Richard L. Brewer
Brillcast, Incorporated
Mr. Douglas E. Brown
Ms. Leola Brown
Mr. Richard E. Brown
Bundy Corporation
Mr. John B. Burkhart
Burkhart Associates
Leo Burnett Company of Michigan, Inc.
Burns Cold Forge
Mr. and Mrs. Gerald S. Burr
Mr. Charles Butts
Byrne Plywood Company
John T. Caldwell, Jr.
Mr. and Mrs. Ray Campbell
Capitol Transportation Company, Inc.
Capitol Trucking Inc.
Harold J. Carleton
Carlson-Diamond & Wright, Inc.
Mr. and Mrs. Robert R. Carlyle
Ms. Mildred Carmichael
Carroll Products, Inc.
Cascade Associates Inc.
Mr. Gary W. Cash
Mr. Sam R. Cataldo
Mr. Walter Cavanagh
Centerline Tool & Die Co.
Champion Engineering Products, Inc.
Robert Check Chemcentral — Detroit
Mr. Clifford J. Church
Mr. M. P. Ciccone
Cincinnati Milacron
Citation Tool, Inc.
City Auto Stamping
City Management Corporation
Mr. R. J. Ciurlik
Mr. and Mrs. Stanley J. Clamage
Mr. Darwin E. Clark
Sparton Products — Clayton-de Windt
Associates, Inc.
Clearr Industries, Inc.
Ms. Marcia D. Cline
Mr. Harold D. Clingsmith
R. and J. Clout
Mr. and Mrs. Carl W. Code, Jr.
Ms. Mary Lynn Cohen
Ms. Wendy Lowe Coles
Stephen R. Coletta
Jeffrey D. Collins
Colman Machining Service, Inc.

We regret the omission of those names received too late for publication.

CONTRIBUTIONS TO THE MEADOW BROOK MUSIC FESTIVAL AND THEATRE

CONTRIBUTORS (Cont'd)

Mr. Douglas C. Colombo
Mr. Joseph M. Colucci
Commercial Carriers, Inc.
Edmund M. Conklin, Jr.
Mr. James J. Conlon
Dennis B. Connor
Mr. Eugene C. Consolo
Continental — Midland, Inc.
Contract Interiors
Mr. F. E. Cook
Ms. Kathleen A. Cooke
Coon DeVisser Co.
James R. Cooney
Cooper Industrial Products
Mr. John W. Coulter
Craft Welding Sales Company
Crane Packing Company
Creative Foam Corporation
CSX Transportation (Mr. D. P. Iller)
Mr. Richard Cuddohy
Mr. and Mrs. Jack M. Cudlip
Marion A. Cumo, Sr.
Currie Associates, Inc.
Mr. Craig Dahl
Lewis I. Dale
Mr. Jack L. Daniel
Mr. and Mrs. G. T. Darnell
Dataforms, Inc.
Mr. Carlisle R. Davis
Davis Tool & Engineering Company
Suzanne L. Day
Ms. Vivian L. DeGain
Delaco Steel Corporation
Mr. George Dellas
Deluxe Stamping & Die Company
DeMaria Building Company, Inc.
Mr. Jack M. DeOrio
Ms. Jane Dermidoff
Detrex Corporation
Detroit Pittsburgh Motor Freight, Inc.
Detroit Strip Division, Cyclops Corp.
George Williams — Dexter Battery
Dexter Gear & Spline
Janet and Greg DeYonker
Digitron Packaging, Inc.
David L. Dimick
Dirksen Screw Products Company
Mr. Jeff Doelker
Mr. Dennis L. Dooley
Dow Chemical Automotive Materials Group
Mr. Andre J. Dubos
Jane and Mike Duffy
Mr. F. H. Dunne
Dupli-Color Products Company
G. B. Dupont Company, Inc.
E & E Engineering, Inc.
Eagle-Picher Plastics Division

Ebersole Sales Agency
Mr. Dennis L. Edwards
Jack and Cathy Eichler
Elco Industries, Inc.
Electro-Matic Products, Inc.
Ms. Donna A. Elliot
Mr. Dean L. Ellis
Engine Technology & Service Ltd.
Doris B. Erickson, DVM
Essex Specialty Products
Mr. L. D. Esterline
Evergreen Design, Inc.
Everlock Fastening Systems, Inc.
Dale and Norma Ewart
Anthony E. Ewert
Hazem and Shaza Ezzat
Fabex, Incorporated
W. K. Facknitz
Mr. W. Lawrence Faloon
Mr. and Mrs. Bart M. Feinbaum
Mr. Sidney I. Feldman
Ronald J. Ferrari
T. E. Fiddler Associates
Fife Electric Company
Arthur G. Fitzgerald
Mr. and Mrs. David E. Fleming
Mr. and Mrs. Larry O. Fletcher
Mr. James T. Flower
Fontanesi & Kann Company
Thomas E. Foote
Mary L. Foster
Fourslides Incorporated
Mr. Joe Fraeyman
Mary Francis and Nick Gallopoulos
Mr. Kevin R. Galvin
GTE Products
Gas Spring Company
Ms. Susanne M. Gatchell
Gates Power Drive Products, Inc.
Gates Rubber Company
Gathen Industries
Mr. Paul Gelazin
General Die Casting Company
Gerstenslager Company
John and Judith Gibson
John W. Gillette Co.
Gilreath Manufacturing Incorporated
Mr. Richard H. Gladding
Mr. and Mrs. John Glotzbach
Michael M. Glusac
Mr. Charles L. Goad
Mr. Loyd Goolsby, Jr.
Virginia L. Graham
C. W. and Barbara Graning
C. L. Grandsen & Company
Grant Industries, Inc.
R. H. Gray
Mr. Marty Greenwald
R. L. Greer & Associates, Inc.

Ms. Delores M. Grier
Michael V. Grobbel
Mr. and Mrs. Ernest L. Grove, Jr.
Mr. Ronald A. Gustke
H & S Industrial Parts Inc.
Mr. James A. Haas
James A. Halbert
Mr. Dennis Hall
Marion Hall
Ms. Theresa Hall
Mr. William L. Hall
Mr. and Mrs. Robert F. Hanba
Mr. Donald C. Harms
Mr. Tom Harpootlian
Mr. Bruce W. Harrington
Robert E. Hathaway II
S. G. Hauseman
Kevin and Linda Heigel
Ms. Karen Held
D. J. Helfman
Richard and Janice Heller
Jerry B. Henderson
Mr. R. B. Hendrickson, Jr.
Mr. and Mrs. James P. Henry
Hercules Machine Tool & Die Company
Hermes Automotive Manf.
Mr. Douglas M. Hess
Hexon Corporation
Mr. and Mrs. Charles R. Hicks
Dale Hietanen
High Q Mfg.
Mr. Donald C. Hildum
Mr. David H. Hill
Thomas B. Hill
Mr. Lawrence A. Hines III
Hirzel-Jones Associates
Mr. and Mrs. E. H. Hoagland
Mr. and Mrs. Michael Hofer
Mr. Gordon L. Hollander
Mr. Leonard R. Hostetter
Mr. Denne Osgood — E. F. Houghton & Co.
Mr. Birney Hoyt
Jamie C. Hsu
Hubbell, Roth & Clark, Inc.
Mr. Edward W. Hufnagle, Jr.
Mr. James S. Hurd
Huron Plastics, Incorporated
IEM Ltd.
Robert and Rosalie Imrick
Industrial Stamping & Manufacturing Corp.
Insite Industries
Izumi Corporation
J & L Manufacturing Co.
J-Mark
J.E.S.A. Enterprises, Inc.
Mr. Mark Jarosz
Lorraine and Sidney D. Jeffe
Mr. Thomas G. Jefferson
Jefford Industries

We regret the omission of those names received too late for publication.

CONTRIBUTIONS TO THE MEADOW BROOK MUSIC FESTIVAL AND THEATRE

CONTRIBUTORS (Cont'd)

Dr. and Mrs. Renaloo M. Jensen
C. R. Jones
Mr. Leonard P. Johnson
Johnson Prototypes, Inc.
Thomas M. Johnson
Albert and Mary Jordan
Mr. Daniel B. Juliette
K. L. A. Laboratories, Inc.
Mr. and Mrs. Gerald E. Kahler
Albert Kahn Associates Inc.
Dr. M. M. Kamal
Ms. Jane E. Kandt
Mr. Jack Kehl
William J. and Margaret S. Kemp
Mr. J. C. Kent
Mr. and Mrs. Gordon W. Kettler
Key Welder Corporation
Ms. Joan C. Kielbowicz
Mr. Edward King
Kingsbury Machine Tool Corporation
Klarich Associates Incorporated
Mr. Wayne L. Klement
Mr. Gary G. Klindt
Mr. Daniel L. Kline
David and Sharon Knipper
Mr. and Mrs. L. Seelbach Kraft
Mr. Michael S. Kramer
Mr. Gregory L. Krause
Mrs. Richard Kroninger
Mr. and Mrs. Dennis T. Kunkel
L & L Products, Incorporated
Mr. Dennis A. Lack
Jon W. Ladd
Lake Side Stamping
Mr. and Mrs. R. Gilbert Lambert, Jr.
Mr. William L. Lamott
Jack Landon
William Langhorst
Mr. Myroslav Lapchak
John K. Lark Company
Leckie & Associates, Inc.
H. E. Lennon Inc.
Mr. Richard L. Leonard
Mr. and Mrs. W. R. Lewellen
Lewis Metal Stamping
Mr. Larry W. Lincoln
Louis and Cheryl Lindeman
Mr. Peter J. Loch
David Lorek
Mr. Richard F. Lucas
James P. Lyons
M. B. Associates, Inc.
M & M Services, Inc.
M & W Manufacturing Company
Mr. Donald F. MacDonald, Jr.
Machining Enterprises, Inc.
Mr. R. Paul Maddock
Madias Brothers, Inc.

Mr. Dennis D. Madigan
Thomas S. Maentz, Inc.
John D. Malloy
Mr. Peter L. Manion
Mr. and Mrs. Mitchell Marecki
John Martarawo
Masland Industries
Masterguide Tool & Engineering, Inc.
Mr. John J. Mastin
Mr. Steven Matsil
Mayco Plastics Inc.
MC Affiliates
Mr. Patrick McCabe
Mr. and Mrs. David N. McCammon
Patrick and Susan McCarroll
Mr. Richard L. McCarthy
Mr. Frederick J. McCurdy
W. C. McCurdy Company
McIntosh Division — Masco Industries
Mr. and Mrs. Edward G. McLeod
Mr. and Mrs. Richard K. McMillan
Mr. and Mrs. F. J. McPartlin
Mrs. Penelope A. McPhee
Mr. William F. McQueen
Mr. H. Michael Medlock
R. D. Meek Company
Meier Metal Servicenter
Mr. J. Curtis Mellor, Jr.
Mellow Freight System Inc.
Mercury Metalcraft Co.
Mercury Paint Company
Mr. Gregory K. Merryman
Mr. Warren Merz
Met-L-Aid, Inc.
R. E. Lawson — Metal Crafters
Metalloy Corporation
Mezey-Purol Agency Inc.
Michigan Mutual Insurance Co. —
Amerisure Companies
Mr. W. P. Middlekauff
Charles G. Miller III
3M Company
Mitsui & Company Inc., U.S.A.
Mr. Charles W. Moder
Modern Engineering
Molmec, Inc.
Mr. Richard Monkaba
Mr. Henry A. Montague
Dennis M. Mooney
Morrilton Plastic Prod., Inc.
Motion Control Corporation
John W. and Priscilla Moulds
MSI — Warren Stamping
MST Steel Corporation
Mubea Incorporated
John Mueller
Mr. Gary D. Mulawa
Mr. Arnold Mummert
Paul and Sandra Murphy
Mr. Paul R. Muttly

Lynn C. Myers
Arthur B. Myr Industries, Inc.
Mr. and Mrs. Robert L. Nagel
Narens Associates, Inc.
National Industries, Inc.
National Ladder & Scaffold — National
Scaffold Rental
National Steel Corporation
Mr. Mark Navarre
Nelson Company
Jack and Sharon Neville
Mr. and Mrs. George M. Newton*
Ronald E. Newton
Nicholson Terminal & Dock Company
Mr. and Mrs. Patrick Nicosia*
Mr. Artis M. Noel
Mr. William B. Noll
Mr. Walter D. Noon
Jane and Henry Noonan
Mr. and Mrs. John R. Nowell
Mr. John J. Nowicki
O.E.M. Technical Sales, Inc.
Oakwood Metal Fabricating Company
Mr. and Mrs. Jon D. O'Heren
A. Okab
Thomas W. and Diane M. Olmsted
Jeff and Mary Olson
Omni Source Corporation
Mr. Richard O'Neil
Ms. Corinne K. Opiteck
Alice M. Osburn
Palmer Moving & Storage
Mr. Joseph E. Papelian
Black & Decker/Parker Kulon
Mr. Paul P. Pataky
William L. Peirce
Mr. John Pelkey
Mr. Larry Pelliccioni
Edwin M. Pereira
Perfection Molding & Finishing Corp.
Peterson Spring — Kingsville
Joseph R. Piazzon
Charles J. Pinto
Mike Skupin/Pioneer Screw & Nut
Larry and Joanne Plant
Plasta Fiber Industries
Plumley Rubber Co./Mr. R. L. Wooten
L. R. Plummer
Mr. and Mrs. Irvin E. Poston
Prestige Stamping Inc.
Mr. George H. Pruette, Jr.
Purolator Products Inc.
J. W. Qualman, Jr.
Mark and Linda Quay
Mr. P. G. Quiram
Mr. Jeffery Raben
Radar Industries
Hugh Rader Lumber Company
Radian Tool Company
Mr. John G. Rahie

We regret the omission of those names received too late for publication.

CONTRIBUTIONS TO THE MEADOW BROOK MUSIC FESTIVAL AND THEATRE

CONTRIBUTORS (Cont'd)

Randall-Textron
 Rassini International, Inc.
 Rayl Industrial Supply
 RB&W Corporation
 Rehmann Industries Inc.
 Reliable Metal Stampings
 Mr. Jack B. Rice
 Mr. Keith C. Ridler
 Riverhill Publications & Pringint, Inc.
 Dr. Vincent Rizzo
 Mr. Jerome Neiheisel — Roadway Express
 Steven R. Roberts
 Robertson-Yates Corporation Ltd.
 Mr. and Mrs. David Robison
 Mr. and Mrs. Bradley J. Rogers
 Mr. Jon V. Rogers
 Mr. Durward W. Roller
 Rose Caster Company
 Mr. Charles D. Ross
 Royal Button & Stamping
 Richard Rubinstein, D.D.S.
 Rupp Oil Company, Inc.
 S. T. Rushwin
 John D. Russell
 Ryan Transportation Group
 Ryken Tube Manufacturing Company
 S.W.E. Incorporated
 Sarah J. Salrin
 Mr. Louis A. Sande
 Ms. Marie Sauder
 Adolph W. Shihli
 Mr. and Mrs. Fred Schaafsma
 Mick and Nancy Scherba
 Mr. Don A. Schiemann
 Neil & Ro Schilke
 R. L. Schmitz
 Ms. Christine Schneider
 Schwartz Industries
 Mr. Saul Schwartz
 Arthur and Pam Schwartz
 Mr. Daniel See
 Mr. Louis C. Seno, Jr.
 Dr. and Mrs. A. J. Serafyn
 Mr. Lawrence R. Sessoms
 J. D. Shaffer
 Shakeproof Division — Illinois Tool Works
 Mr. and Mrs. James W. Shank
 Thomas A. Shaster
 Mr. Richard J. Sherman
 Mr. Cletus M. Shields
 Mr. Robert H. Shoemaker — Kolene Corp.

Mr. and Mrs. J. Dale Sholl
 William L. Short
 Signet Systems, Inc.
 Mr. Howard A. Silverman
 Mr. Charles D. Simmons
 Mr. and Mrs. Richard T. Simmons
 Mr. and Mrs. Frederick Simon
 William R. Simons
 Robert G. and Gail C. Sirna
 Ms. Anne Slis
 Ms. Irene Smart
 A. O. Smith
 Mr. and Mrs. Byron L. Smith
 Tom Smith Inc.
 Mr. and Mrs. Robert M. Smith
 Mr. and Mrs. F. D. Smithson
 Mr. Richard B. Sneed
 Mr. Robert E. Socia
 Mr. Kenneth S. Sohocki
 J. A. Sorensen
 South Charleston Stamping & Manufacturing
 Sparton Products
 Mr. David G. Spence
 Ms. Mona Spezzano
 S P S Technologies
 Stant Inc.
 Dr. James B. Stanton
 Jay and Sandy Stark
 Mr. Hugh Stelter
 Mr. John C. Sterritt
 Stevens Auto Products
 Ed and Sandy Stewart
 H. B. Stubbs Company
 Mr. Daniel D. Sullivan
 Mr. Warren J. Swan
 Ms. Carol J. Swartz
 A. L. Sweet
 Ms. Elva Talamonti
 Tarnow Electric Supply Company
 Tartan Tool Company
 Sandra J. Teague
 Teal Electric Company
 Teleflex Incorporated
 P. W. Telesco — Jacobson Group
 Thogus Products Company
 Mr. David R. Thornbury
 Jane Tirey
 R. M. Tischler
 J. L. Todd
 Daryl Tomsa
 Gary and Marsha Toth
 Townsend Textron Inc.
 Larry and Faye Traskos

Mr. Ralph R. Tredway
 M. L. Trist
 Mr. Reginald S. Trotter
 TSM Corporation
 Ms. Patricia Turski
 Tweddle Litho Co.
 Mr. James J. Tyler, Jr.
 U. S. Plastics
 Union Carbide Corporation
 Uniroyal Goodrich Tire Company
 Mr. James D. Unis
 United States Telephone Corporation
 Mr. Ronald J. Upsher
 Mr. and Mrs. R. VanHollebeke
 Versatube Corporation
 Voplex Corporation
 Mr. J. G. Waechter, Jr.
 Wagner Lighting Division — Cooper Ind.
 Don and Keran Walkowicz
 John R. Wallace
 Mr. and Mrs. Leo F. Walsh
 Johanna and Paul Walters
 Ms. Marilyn E. Wanty
 Mr. Byron L. Warner
 Mr. Harold G. Warner
 Dudley C. Wass
 William and Pamela Way
 Mr. Donald L. Webler
 L. A. Weis
 Welding Metal Inc.
 Marcy and Clarence Wentzel
 Mr. Jack F. Wheatley
 Mr. Roger D. Wheeler
 Mr. Glenn E. White
 Mr. Gene P. Whitlinger
 Whittar Steel Strip
 Charles W. Wiegel
 Mr. William B. Wilcox III
 Williams Manufacturing Co.
 Mr. and Mrs. William E. Wiltse
 F. B. Winckler, Jr.
 Gregory A. Wise
 Wolf Detroit Envelope Co.
 Mr. and Mrs. Michael R. Wood
 Mr. James L. Woolley
 Phil and Sharon Workman
 F. B. Wright Company
 Mr. J. B. York
 Anton H. and Janet L. Zidansek
 Mr. and Mrs. Gordon Zimmer
 Mary Luz and Peter M. Zubrin

We regret the omission of those names received too late for publication.

Friends of the Meadow Brook Music Festival

Opus

Jack Bean
Mr. and Mrs. Rodkey Craighead
Mrs. Roger M. Kyes
Mr. and Mrs. Edward H. Mertz
Quasar Industries
Mr. and Mrs. Irving Rose
Erwin S. Simon and Marjorie Hecht Simon
Mr. and Mrs. L. D. Taylor

Sound Supporters

Adrienne and Robert Z. Feldstein
Margery and Ross Johnston
Mr. and Mrs. C. Nagy and Family
Aliza Nivy
Drs. Myra and Harold Weiss

Benefactors

Gary K. Adams
Mr. and Mrs. Charles J. Allen
William N. and Barbara F. Anderson
Dr. and Mrs. Ralph E. Bauer
Carl and Jean Bihlmeyer
Penny and Harold Blumenstein
Mr. and Mrs. Lawrence B. Boensch
William and Carol Brink
Mr. and Mrs. William N. Campbell
Jannett Click
Dr. and Mrs. James M. Colville
Mr. and Mrs. Robert L. Crump
Pat and Lynne Echlin
Alice and Murray Ehrinpreis
Edward A. Eickhoff
Mr. and Mrs. George L. Erb
Mr. and Mrs. Douglas A. Evans
Mr. and Mrs. Richard L. Fowler
Barbara S. Gaves
Mr. and Mrs. Kurt P. Haller
Donald and Marjorie Hicks
Mr. and Mrs. E. F. Hoelscher
Mr. and Mrs. C. Edwin Howard
Donald and Dolores Hudler
Frederick G. L. Huetwell
Hydra-Zorb Co.
Mr. and Mrs. Richard Jessup
Mr. and Mrs. Phillip K. Johnson
Mr. and Mrs. James A. Johnston
Kenneth S. Kowalski
Thomas and Mary Ann Kuess
Mr. and Mrs. Edwin R. Langtry
Mrs. Leonard T. Lewis
Mr. and Mrs. David Lewis
Mr. and Mrs. Pecky D. Lewis, Jr.
MacDermott Roofing & Sheet Metal Co.
Joan and Doug Mann
Mr. and Mrs. Donald E. McMinn
McMullen Tool Supply Company
Mr. and Mrs. Edward Miller
Mr. and Mrs. Herbert Mitnick

Dr. and Mrs. Lawrence Morawa
J. I. Morrison
Penfield Mower
Mr. and Mrs. Joseph J. Pero
Richard N. Peters
Shirley J. Pobur
Dr. H. Rahbari
Dorinne Redmon
Dick and Doris Roeder
S. Dennis and Leslie Rogers
Bruce and Marcia Rowbottom
Mr. and Mrs. Richard F. Rush
Mr. and Mrs. Alvin Russman
Richard J. Sawicki
Norman Scherer
Mr. and Mrs. Donald E. Schwendemann
Don Serafin
Dr. and Mrs. Marvin Shulman
Elaine and Herbert Sott
Dr. and Mrs. Gerald Stollman
Dr. and Mrs. Donald E. Stroud
Michael Trzos
Robert L. Udebrock
Larry and Alicia Winget
Teruko and Kim Yamasaki

Patrons

Terrence S. Althouse
Mr. and Mrs. Charles J. Andrews
Mr. and Mrs. Russell J. Ayers
Mr. and Mrs. R. Baber, Jr.
M. J. Bailey
Gerald A. Baker
Mr. and Mrs. Ernest E. Beren
Mr. and Mrs. Roy C. Biggerstaff, Jr.
Dr. and Mrs. John R. Birmingham
Ruth E. Bliefeld
Mark and Laurie Blinder
John E. Bloom
Dan and Pat Bober
William R. Boike
Mr. and Mrs. William C. Brimmer
Mrs. Noel A. Buckner
Mr. and Mrs. Johannes Buiteweg
Mr. and Mrs. Arthur G. Burgott
Gloria Carson
John and Fran Casey
Mr. and Mrs. Thomas C. Cheney
Patrick and Diane Clancy
James Clarke and Yona Nivy
Mary M. Clement
William J. Clissold
Dr. and Mrs. Orlo L. Crissey
Gary and Minde Cooper
Tula and John Cupelis
Rosemarie Curtis
Jimmie Sue and David Daniels
Mr. Dominic Dell'Isola
Paul and Ellen Dennis
Alan D. De Wolf

Lawrence E. Dionne and Sharon M. Burton
Mrs. Dean Draper
David G. Ebert
Doris B. Erickson, DVM
Anna and Richard Fidler
Tom Fillbrook
Mr. and Mrs. Charles Finkelstein
Thomas L. Follensbee
Albert E. Francis
Michael and Sara Frank
Dr. and Mrs. Charles E. Frohman
Mr. and Mrs. John P. Gergel
Annette Giasson
Sherry Golding
Barbara Goldstein
Bryan and Christina Gray
Arthur and Helen Grix
William G. Halliday
Tom and Myrna Hitchman
Bruce and Sharon Hoilman
Ian S. Holmes
Joel Ittigson
Bill and Jeanette Johnston
Dr. and Mrs. Stuart Katz
Michael J. Kay
Norb and Carole Keller
Marvin L. Kornhauser
Kenneth and Elizabeth Krause
Richard J. Levine
Richard H. Lobenthal/Dr. Judith A. Kovach
Elizabeth A. Long
J. Mandrup-Poulsen
Mr. and Mrs. Robert P. Mast
Jan McCall
Mr. and Mrs. Ronald K. McCreight
Bonnie McMinn/Greg Stein
M. P. Meza, M.D.
Robert F. Miller
Mr. and Mrs. James A. Mulrenin
Mitsui & Co. (U.S.A.), Inc. Detroit Office
Phyllis and Bob Nofz
Sally and Harry Nosanchuk
Mr. and Mrs. Ralph A. Orlandi
Mr. and Mrs. Wilbur L. Ott
Dr. and Mrs. Donald C. Overy
P & E Properties Inc.
Charles and Elaine Perlman
Joan and Alan Peterson
Elaine Phillips
Sharon Pohly
John and D'Anna Potter
William and Rosalene Ray
George Riffenburg
Mr. and Mrs. Bernard Robertson
Mr. and Mrs. George B. Roller
M. Jean Rose
William and Eleanor Rose
Mr. and Mrs. Herman Rosenbusch
Rhonda and Albert Rosenthal
Continued on next page

We regret the omission of those names received too late for publication.

Friends of the Meadow Brook Music Festival

(Cont'd)

Elizabeth and Michael Ross
 Mrs. R. R. Rothschild
 Virginia and Ed Rusin
 Stuart and Randi Sakwa
 Allan and Barbara Saltsman
 Mr. and Mrs. John A. Schmidt
 Mr. and Mrs. Robert Selik
 Rosalie A. Sharpe
 Margie Shell
 Mr. and Mrs. Fredrick Simon
 Mrs. Milton H. Sims
 Elizabeth J. Soderman
 Harriette N. Staff
 Dr. Sheldon and Jessie Stern
 David G. Stevens
 Walt and Roberta Stopa, Jr.
 Richard E. Teets and Mary S. Pickett
 Dr. and Mrs. Charles R. Webb
 Dr. and Mrs. Milford E. Wenokur
 Irv and Marsha Wengrow
 James W. Western

Friends

Mr. and Mrs. James W. Anderson
 Helen A. Andrews
 Bud Ault
 Mrs. Simon Baer
 Rochelle M. Barr
 Robert P. Batchelder
 Mr. and Mrs. A. D. Baumhart III
 Newlyn and Eva Benford
 Ruth Berman
 Martin G. and Diane M. Bick
 Betty Jane Blair
 James R. Blust
 Mr. and Mrs. Richard B. Boose
 Mr. and Mrs. Jeffrey M. Boss
 Nadia Boreiko
 Char and Scott Brooks
 Mary H. and John R. Bull
 Ronald Bunnell
 Tom and Marilyn Burch
 Clyde Burns
 James W. Cahill
 Barbara J. Cerrato
 Charles H. Clark
 Mrs. Irene Collins
 Raymond R. Comiskey, Jr.
 Mr. and Mrs. Wayne D. Conner II
 Mr. and Mrs. Richard F. Corona, Sr.
 Mrs. Ronald Cruickshank
 Suzanne and Thomas DeGross
 Imogene and George Dorner
 Wayne Dupuis
 Mr. and Mrs. Steven D. Evans
 Helen Feldman
 David A. Finn
 Galen and Margherita Fisher
 Mr. and Mrs. Robert G. Frost
 Joanne M. Garrett

Betty R. Genise
 Kathy Granowicz
 Edith and Edward Gray
 John N. Grekin
 Mr. and Mrs. Thomas B. Griffith
 Ken and Stephanie Griffo
 Claire L. Grosberg
 Julie and Hanley Gurwin
 Betty J. Haase
 Mr. and Mrs. Robert A. Hadley
 Mr. and Mrs. Jesse Hagle
 Dr. and Mrs. Berj H. and Alice B. Haidostian
 Dr. and Mrs. Bernard J. Harris
 Joseph W. Hathaway
 Janice and Jeff Hausman
 Mr. and Mrs. John D. Head
 Robert L. Herstein
 Mr. and Mrs. Fredrick Hill
 Lawrence and Paula Hyman
 Graham and Pat Jackson
 Dr. and Mrs. Bruce Jacob
 Robert A. Jewell
 Mr. and Mrs. Robert A. Jones
 John F. Jovanovich, M.D.
 Janet M. Joyce
 Mr. and Mrs. Vincent H. Kellerman
 Ed and Marcia Kersch
 Dorothy E. Killen
 Mr. and Mrs. Daniel Kingsbury
 A. F. Kinzer
 Eleanor Kozlowski
 Dr. and Mrs. Jerome W. Krause
 Mr. and Mrs. Otto C. Kuemmel
 Ms. Dorothy Kurrie
 Guenter and Karen Lahr
 Terry and Kenneth M. Landa
 Marvin Lawrence
 Dan Lee
 Dick and Dorothy Lemon
 Dr. Leonard H. and Mrs. Lorraine L. Lerner
 Jane Lombard
 Hank and Ann Lorish
 Sister Jo Ann Lucas, O.P.
 Mr. and Mrs. Wayne Lundy
 Mr. and Mrs. Richard P. Mazurek
 Margaret E. McCarthy
 J. McDonald
 Mr. and Mrs. R. H. McGraw
 Julius S. Megyesi
 Dr. and Mrs. D. B. Meltzer
 Frank W. Mulholland
 Mr. and Mrs. Thomas F. Neu
 Mr. and Mrs. S. Sidney Newhouse
 W. H. Nikkel
 Andrew and Catherine O'Gawa
 Mr. and Mrs. Ronald W. Oleksiak
 Michele M. Olind
 Mr. and Mrs. W. A. Pagen
 Mr. and Mrs. Lawrence F. Palka

John and Linda Pannuto
 Mr. and Mrs. Gerald G. Peck
 Mr. and Mrs. James Pennington
 Hal Pfister
 Dr. and Mrs. Eduardo Phillips
 Ruth Pierce
 Dan and Chris Pillow
 Peggy M. Rastenis
 James and Doris Richard
 J. S. Richards
 Nancy and Ted Roney
 Mr. and Mrs. Robert S. Rosenfeld
 Dr. Felix F. Rosenwach
 Robert and Sheri Rotenberg
 Dorothy and Stan Seger
 Mr. and Mrs. Leslie Schey
 Richard Schloss
 Mrs. Carl H. Schulte
 Jerald D. and Janice B. Shatzman
 Norbert Shell
 Dr. and Mrs. Sheldon N. Siegel
 Linda C. Sickles
 Joan M. Sigmann, M.D.
 Helen B. Sing
 Timothy M. Smith
 Murray Sobolov
 Mary C. Steffan and D. A. MacIrvine
 Robert I. Stern
 Jim Stevenson
 James and Shirley Streight
 Mr. and Mrs. Roger Stroup
 Mr. and Mrs. A. R. Stuart
 Don J. Switzer
 Mr. and Mrs. Robert Szefti
 Mrs. G. W. Trichel
 Mr. and Mrs. Philip D. Vincenzetti
 Carolyn and Jerry Voight
 Shirley and Howard Warye
 Mr. and Mrs. Leonard H. Weiner
 Mrs. I. (Beryl) Winkelman
 Mrs. Robert G. Wolf
 Mrs. Connie Woods
 Joan Zak

We regret the omission of those names received too late for publication.

1990 INDEX TO ADVERTISERS

Twenty-seventh Annual Edition of the Meadow Brook Music Festival Program

Advertiser Name	Page Number	Advertiser Name	Page Number	Advertiser Name	Page Number
Ackroyd's Scottish Bake House	98	Hubert Distributors	26	WJBK	139
Allied-Signal Automotive	18	Indian Head Industries, Inc.	135	WJOI	61
American Sunroof Corp.	138	Jacobsen's Flowers, Inc.	146	WJR	151
Ameritech Mobile Communications	47	Jacobson Stores	49	WKBD — Channel 50	117
Autobahn Motors, Inc.	114	K mart Corporation	101	WOMC	121
Avis Ford Dealership	116	Kelsey-Hayes Company	35	The Woodbridge Group	98
N. W. Ayer, Inc.	30	Knapp Communications Corp.	85	WQRS	108
Azar's Oriental Rugs	143	Kruse and Muer Quality Foods	159	WWJ	63
Birmingham Chrysler Plymouth	108	Lectron Products, Inc.	143	Yankee Carpenter	90
Bozell, Jacobs, Kenyon & Eckhardt	145	Life Magazine	130		
Bubble and Squeak	138	Lintas: Campbell-Ewald	94		
The Budd Company	37	MSU Federal Credit Union	114		
Leo Burnett Company	106	Manufacturers National Bank of Detroit	74		
Car and Driver/Diamondis Communications	83	Marty's Cookie Co.	114		
Chamber Music Society of Detroit	48	Masco Corporation	100		
Chrysler Corporation — Dodge Caravan	IBC	McCann-Erickson, Inc.	93		
Chrysler Corporation — Jeep	54	Metropolitan National Bank of Farmington	85		
Chrysler Corporation — New Yorker	32	Michigan Design Center	5		
Clarkston Cafe	106	Michigan National Bank	100		
Co/op Optical	56	Midland Center for the Arts	77		
Crittenton Hospital	90	Murdock's	146		
Dana Corporation	115	The New Yorker Magazine	67		
Darakjian Jewelers	99	Newcor, Inc.	146		
D'Arcy Masius Benton and Bowles, Inc.	81	Northfield Hilton	148		
Disc Connection	146	Oakland University — Continuing Education	98		
W. B. Doner & Co.	89	Oakland University — Meadow Brook Hall	78		
Douglas Cleaners	85	Oakland University — OU Foundation	86		
Eaton Corporation	138	Observer & Eccentric	76		
Entertainment Weekly	31	Patrick's Shalea Inn	105		
Erhard BMW	159	Perfect Closet	74		
Falvey Motors of Troy	75	Perry Drug Stores	80		
Ford Motor Co. — Ford Corporate	70	Pettijon's Restaurant	85		
Ford Motor Co. — Ford Thunderbird	IFC	Physical Therapy Specialists, Inc.	106		
Ford Motor Co. — Lincoln-Mercury Div.	123	Price Stern Sloan	41		
Ford Motor Co. — Parts & Service Div.	137	Prudential Town Center	15		
Forth Dimension of Michigan Inc.	156	Readers Digest	28		
The Framery, Inc.	82	Ross Roy Inc.	50		
GE Automotive	154	Russell Hardware, Inc.	114		
Gail & Rice Productions	143	Scallops of Rochester	2		
Gail's General Office Supply	77	Jules R. Schubot Jewellers	1		
General Motors — AC Delco Division	16	Silent Call	74		
General Motors — AC Rochester Division	24	Smithsonian Magazine	45		
General Motors Acceptance Corp.	10	Somerset Mall	17		
General Motors — Buick Reatta	43	Speedy Tees Inc. — Birmingham	90		
General Motors — Cadillac Motors Division	110	Sports Illustrated	59		
General Motors Corporation — Corporate	66	St. Joseph Mercy Hospital	69		
General Motors — Oldsmobile Division	62	Stewart Fabrics, Inc.	106		
General Motors — Parts Division	107	TRW Incorporated	109		
General Motors — Pontiac Motor Division	102	J. Walter Thompson	60		
General Motors — GMC Truck Division	91	Time Incorporated	38		
Goodyear Tire & Rubber Company	68	Top of the Lamp	148		
Greenstone's	126	UAW International Union	92		
Guest Quarters Suite Hotel	77	U.S. News & World Report	51		
P. R. Haig Jewelers	97	Unisys Corporation	121		
Handleman Company	84	University Musical Society	92		
Health Alliance Plan	118	Warren Symphony	7		
Heartland/Ginopolis	46	Wells, Rich, Greene/Detroit, Inc.	153		
Herald Wholesale	74	Wesch Cleaners, Inc.	77		
Hoops	90	White Chapel Cemetery	140		