
OU OFFICIAL: A Grizz Facts look at the rising GPAs of incoming freshmen

Thu, Jan 18, 2018



Office of Institutional Research and Assessment

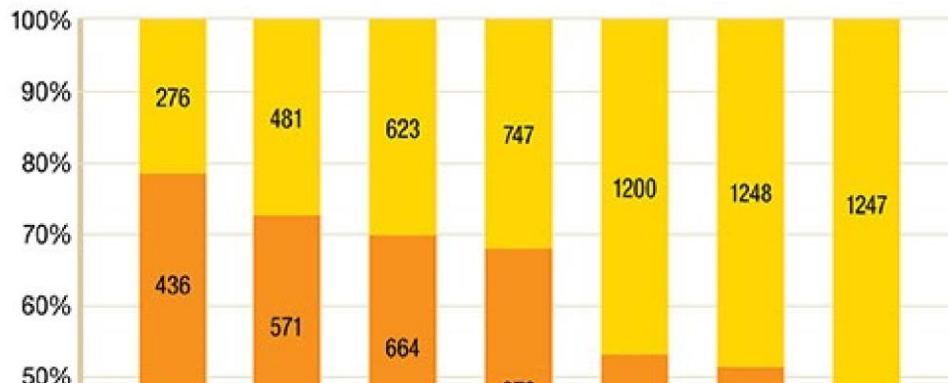
Grizz Facts: A look at the rising high school GPAs of incoming freshmen

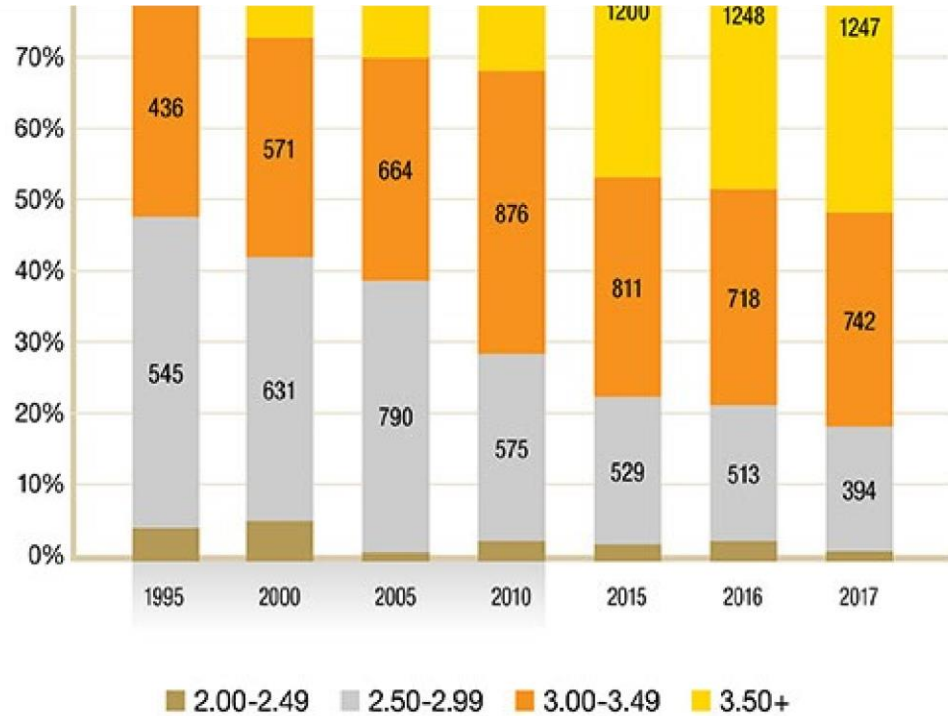
First-year students with high school GPAs of 3.5 or higher now make up the majority of incoming classes here at OU.

Below, the colored segments of the bar graph denote the proportion of the class within the specified high school GPA range, and the numbers within those segments represent the total number of these students.

The expanding yellow segments illustrate that over the last two decades, and particularly over the last three years, the University has had steadily growing appeal to high-achieving students.

Distribution of High School GPAs of Incoming Freshmen (1995-2017)





Oakland University
Office of Institutional Research and Assessment

Wilson Hall, Room 512 [371](#)
Wilson Blvd.
Rochester, MI 48309-4486

(248) 370-2387 oira@oakland.edu
oakland.edu/oira