

WHERE STARS SHINE



# *Meadow Brook*

MUSIC FESTIVAL 1987

A CULTURAL PROGRAM OF OAKLAND UNIVERSITY



# 1987 Meadow Brook Music Festival

Monday	Tuesday	Wednesday	Thursday
Meadow Brook Music Festival is a cultural program of Oakland University.	June 16 Paul Anka	June 17 America Three Dog Night	June 18 DSO Gunther Herbig, conductor
All concerts begin at 8 p.m. unless otherwise noted.		June 24 Gene Pitney Del Shannon	June 25 DSO Gunther Herbig, conductor Tania and Eric Heidsieck, duo-pianists
Special Children's Concerts are scheduled for 11 a.m. Saturdays on June 20, July 18 and August 8.		July 1 The Spinners Martha Reeves Jr. Walker & The All-Stars	July 2 DSO Leonard Slatkin, conductor Richard Stoltzman, clarinetist
All programs and artists are subject to change.			July 9 DSO Jiri Belohlavek, conductor Mischa Lefkowitz, violinist
July 13 Spyro Gyra		July 15 Boston Pops on Tour John Williams, conductor with the Boston Pops Esplanade Orchestra	
			July 23 DSO Jerzy Semkow, conductor Shura Cherkassy, pianist
July 27 Wayne Newton		July 29 Festival Women's Fashion Show Presented at Shotwell-Gustafson Pavilion	July 30 DSO Jerzy Semkow, conductor Jorge Bolet, pianist
August 3 David Sanborn	August 4 Perry Como 1987 Louis C. Goad Memorial Concert	August 5 The Platters The Drifters The Shirelles The Coasters	August 6 DSO Paavo Berglund, conductor Laurence Liberson, clarinetist
August 10 Gordon Lightfoot	August 11 London Symphony Michael Tilson Thomas, conductor Nadja Salerno-Sonnenberg, violinist 1987 V. Everett Kinsey Memorial Concert	August 12 Cleo Laine John Dankworth and the Dankworth Quartet	August 13 DSO Stephen Stein, conductor James Tocco, pianist
August 17 Pat Metheny			
August 24 Anne Murray			



# Complete Performance Calendar

<i>Friday</i>	<i>Saturday</i>	<i>Sunday</i>
<p><b>June 19</b> Frankie Valli &amp; The Four Seasons The Four Tops</p>	<p><b>June 20</b> "Peter and the Wolf" Al Hirt Pete Fountain The Dukes of Dixieland</p>	<p><b>June 21</b> DSO Gunther Herbig, conductor</p>
<p><b>June 26</b> Marvin Hamlisch With Special Guest To Be Announced</p>		<p><b>June 28</b> DSO Gunther Herbig, conductor Tania and Eric Heidsieck, duo-pianists</p>
<p><b>July 3</b> Chuck Mangione</p>	<p><b>July 4</b> Canadian Brass William Bolcom &amp; Joan Morris</p>	<p><b>July 5</b> DSO Leonard Slatkin, conductor Richard Stoltzman, clarinetist</p>
<p><b>July 10</b> James Galway with The Chieftains</p>		<p><b>July 12</b> DSO Jiri Belohlavek, conductor Mischa Lefkowitz, violinist</p>
	<p><b>July 18</b> "Rumpelstiltskin" Academy of St. Martin in the Fields Sir Neville Marriner, conductor Christopher Warren-Green, violinist 1987 West H. Gallogly Memorial Concert</p>	<p><b>July 19</b> Academy of St. Martin in the Fields Sir Neville Marriner, conductor Christopher Warren-Green, violinist 1987 George T. Trumbull Memorial Concert</p>
<p><b>July 24</b> Johnny Mathis &amp; Henry Mancini</p>	<p><b>July 25</b> Detroit Symphony Pops John Addison, conductor "Music from the Great Motion Pictures"</p>	<p><b>July 26</b> DSO Jerzy Semkow, conductor Shura Cherkassy, pianist</p>
<p><b>July 31</b> Preservation Hall Jazz Band</p>	<p><b>August 1</b> Peter, Paul &amp; Mary 1987 John S. Judd Memorial Concert</p>	<p><b>August 2</b> DSO Jerzy Semkow, conductor Jorge Bolet, pianist</p>
<p><b>August 7</b> Detroit Symphony Pops Erich Kunzel, conductor Lewis Dale von Schlanbusch, baritone</p>	<p><b>August 8</b> "Rags, Bags &amp; Dragons" Detroit Symphony Pops Erich Kunzel, conductor Lewis Dale von Schlanbusch, baritone</p>	<p><b>August 9</b> DSO Paavo Berglund, conductor Laurence Liberson, clarinetist</p>
<p><b>August 14</b> Johnny Cash Larry Gatlin &amp; The Gatlin Brothers</p>	<p><b>August 15</b> Michael Franks</p>	<p><b>August 16</b> DSO Stephen Stein, conductor James Tocco, pianist</p>
<p><b>August 21</b> Sheena Easton</p>	<p><b>August 22</b> Diahann Carroll Vic Damone</p>	
<p><b>August 28</b> Meadow Brook Festival Orchestra Charles Greenwell, conductor Laser Light Spectacular!</p>	<p><b>August 29</b> Meadow Brook Festival Orchestra Charles Greenwell, conductor Laser Light Spectacular!</p>	<p><b>August 30</b> Jean-Luc Ponty</p>
<p><b>September 4</b> Roger Whittaker</p>	<p><b>September 5</b> Roger Whittaker</p>	<p><b>September 6</b> The Pointer Sisters</p>



## Staff

The Meadow Brook Music Festival operates  
under the supervision of the Director of  
Cultural Affairs of Oakland University,  
Robert A. Dearth

Managing Director  
Stuart C. Hyke

Administrative Secretaries  
Cathy A. Linden  
Maureen McGerty

Finance Director  
John Fischer

Accountant & Financial Analyst  
Carol Lamb

Finance Assistant  
Sandy Teague

Director of Community Relations & Group Sales  
Jane U. Mosher

Assistant to Director of Community Relations  
& Group Sales

Jacqueline R. Sferlazza

Administrative Assistant  
Eileen Arseneau

Public Relations Director  
Sylvia Coughlin

Public Relations Assistant  
Julie Glynn

Associate Director  
Gregg Bloomfield

Artists Relations Director  
Mary Lynn Bonnell

Stage Manager  
Rick Gopigian

Lighting Engineer  
Robert Mesinar

Audio Engineer  
Tom Bryant

Operations Director  
Gary Gandolfi

Parking Supervisor  
Steve Cook

Maintenance Supervisor  
Michael McGarry

Ushering Coordinator  
Angela Panetta

Transportation Coordinator  
Keith Faber

Box Office Manager  
Suzanne Day

Single Ticket Supervisor  
Shirley Geary

Season Ticket Supervisor  
Lois Day

Supervisor of Box Office Operations  
Kathleen Gentile

Box Office Staff  
Christina Abernathy, Elaine Bellanger,  
Leslie Bonnell, Barbara Jenks

Secretary to Mr. Dearth  
Patricia Pote

## Contents

Board of Trustees and Officers of Oakland University .....	6
Complete Season's Performance Calendar .....	10-11
Oakland University	
Welcome to the Festival .....	17
"A Clear Vision for the Future" .....	18-23
Meadow Brook Theatre	
"Meadow Brook Stars are World-Class" .....	24-25
Coming Events .....	26
Executive Committee Chairpersons, 1987 .....	29
Past Executive Committee Chairpersons, 1964-86 .....	30-31
Women's Committee Highlights .....	35-36
Special Acknowledgements .....	38
Executive and Finance Committees of Meadow Brook	
Music Festival and Meadow Brook Theatre .....	43
Rochester Festival Club .....	45-46
The Detroit Symphony Orchestra .....	52-53
Program Notes and Artists' Biographies .....	59-102
London Symphony Orchestra .....	107-108
Academy of St. Martin in the Fields .....	113-115
Boston Pops Esplanade Orchestra .....	121
Contributors to Meadow Brook Music Festival and Meadow Brook Theatre	
Major Donors .....	135-136
Sponsors .....	138-140
Century Club .....	138-140
Contributors .....	141-144
Friends of Meadow Brook Music Festival .....	146
Index to Advertisers .....	159



Stage work at the Baldwin Pavilion is done by members of the International Alliance of Theatrical Stage Employees, Local No. 38.



---

# OAKLAND UNIVERSITY

---

## BOARD OF TRUSTEES

David Handleman  
*Chairperson*

Patricia B. Hartmann  
*Vice Chairperson*

Donald L. Bemis

Larry W. Chunovich

Phyllis Law Googasian

Ken Morris

Stephan Sharf

Howard F. Sims

Joseph E. Champagne  
*Ex Officio*

## OFFICERS OF THE UNIVERSITY

Joseph E. Champagne  
*President*

Keith R. Kleckner  
*Senior Vice President  
for University Affairs  
and Provost*

John H. DeCarlo  
*Vice President for  
Governmental Affairs  
General Counsel, and Secretary  
to the Board of Trustees*

Robert J. McGarry  
*Vice President for Finance and  
Administration and Treasurer  
to the Board of Trustees*

Wilma H. Ray-Bledsoe  
*Vice President for Student  
and Urban Affairs*

David H. Rodwell  
*Vice President for External Affairs  
and Director of Development*

Robert W. Swanson  
*Vice President for Developmental Affairs*



---

# Welcome

---



Welcome to the 1987 Meadow Brook Music Festival. The theme is "Where Stars Shine," and Emilie and I are truly excited about the array of artists engaged for this summer. We are confident that you will find programming to please almost any mood or taste. Offerings vary from the resident Detroit Symphony Orchestra to jazz and pop performers and outstanding guest symphony orchestras.

We feel a university should go beyond the provision of an excellent education and be responsive to community needs. Those needs may be filled by the aesthetics of Meadow Brook or the excitement of athletics, by adult work force retraining projects or early intervention programs for the youth of Pontiac and Detroit.

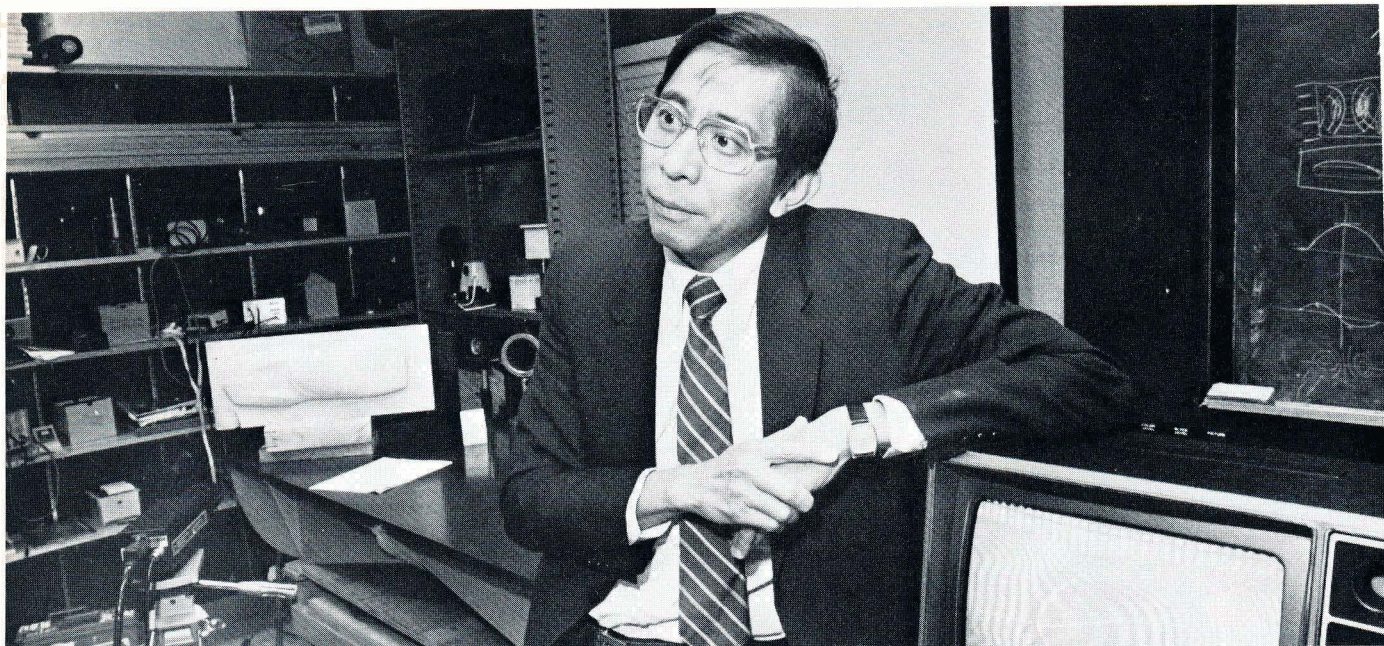
But while we share all those commitments, this is Meadow Brook's time. Emilie and I hope you will share that time with us and with the hundreds of volunteers who help make each festival season a success. Be with us "Where Stars Shine" in 1987.

Sincerely,

A handwritten signature in cursive script that reads "J. E. Champagne". The signature is fluid and elegant, with a long horizontal flourish at the end.

President  
Oakland University





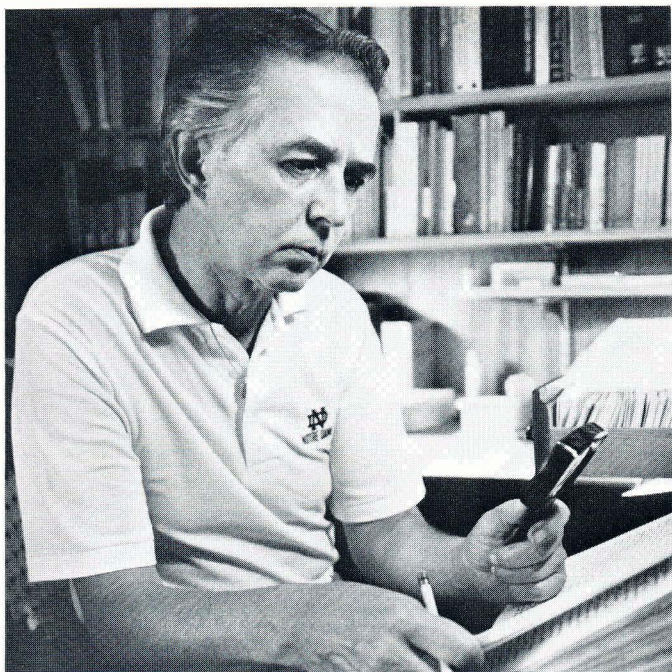
*Inventor Michael Y.Y. Hung's pioneering work on Shearography is finding industrial application.*

## Vital research and scholarship

- Charles Lindemann, associate professor of biological sciences, has learned that calcium levels can make a sperm cell assume the curved "fish hook" shape that may be necessary for fertilization.

Dr. Lindemann has also learned that nickel or copper ions can block the change. His findings, along with his previous discoveries, may have profound long-term implications on fertility and contraception.

Dr. Lindemann has been studying sperm cell activity with continuing support from the National Science Foundation. He was the first to demonstrate that a cellular



*William Bryant is researching the first novel written in the New World.*

protein and cyclic adenosine monophosphate are keys to control of sperm activity. This was first announced in 1983 in the journal *Cell Motility*.

- Inventor-engineer Michael Y. Y. Hung says the Federal Aviation Administration recommends his invention, Shearography, for testing airplane tires. Commercial machines using Shearography are commonly used in the rubber industry to evaluate the quality of tires, he adds.

"This is not an academic toy," states Dr. Hung, professor of engineering. "It is a practical application of laser and optic technology that is attracting wide attention from government and private sources." Those sources include NASA, Chrysler Corporation and General Motors.

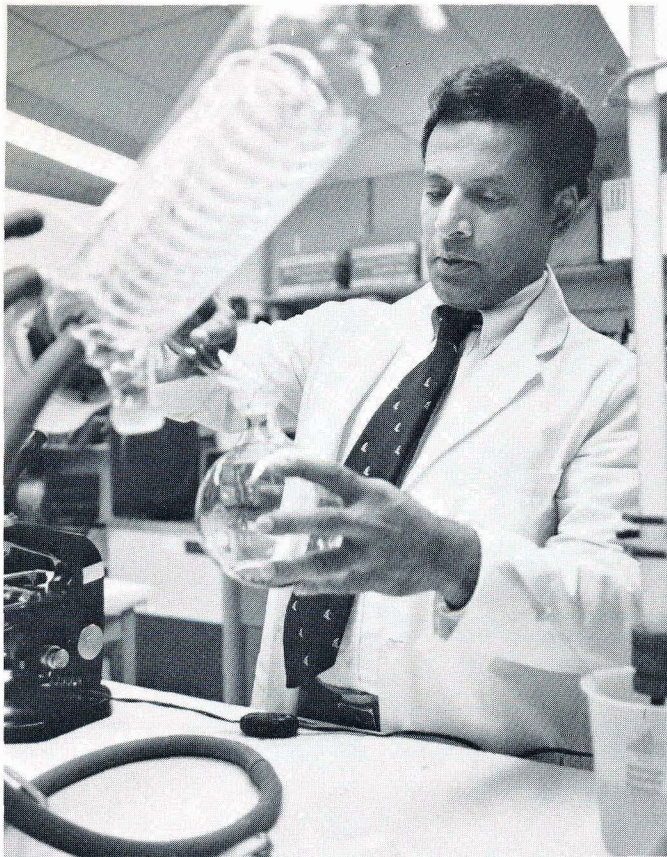
Dr. Hung says the device he patented is a laser, optical method combined with a computer. It is equivalent to a full-field strain gauge and provides quick, accurate, nondestructive testing for flaws such as cracks, voids, inclusions and debonding of materials, the latter a growing concern in the auto industry.

- William Bryant, associate professor of Spanish, is researching what he believes to be the first novel written in the New World.

*The Orphan's Story* was written by Martin de Leon before 1621, and the never-before-catalogued work disproves a prevailing theory dating the first novel in Spanish America around 1692, Dr. Bryant says. The story details life in the New World during the early 17th century. It also provides information on de Leon, whose successful career within the Roman Catholic Church eventually led him to become an influential bishop.

Dr. Bryant is preparing a critical edition of the work, which is owned by the Hispanic Society of America. After completing the edition, Dr. Bryant plans to present a popular, non-scholarly edition of *The Orphan's Story* in modern Spanish. He then hopes to begin an English translation of the story.





Virinder K. Moudgil is testing the experimental drug RU-486 during his studies of steroid hormone action.

- Lizabeth A. Barclay, associate professor of management, has discovered that not all women support equal employment opportunity programs. Her results were obtained in researching women in organizations.

Dr. Barclay says one possible reason for this seemingly curious finding is that some women may discount any kind of external help because they feel they earned their jobs on their own merits, not because of EEO rules.

She is studying graduate students' perceptions of isolation within work organizations. With Floyd G. Willoughby, assistant professor of management, Dr. Barclay has studied the attitudes of Oakland University seniors toward unions.

- Ranald D. Hansen, professor of psychology, is studying involuntary facial movements that occur during the first few thousandths of a second following an emotional stimulus. His research, funded by the National Science Foundation, suggests that disguising emotions is more complicated than it sounds.

The recipient of the 1986 Oakland University Research Excellence Award, Dr. Hansen has developed a theory to explain why, when an audience is present, a subject's performance level increases while doing simple, well-practiced tasks but drops while doing complex or difficult tasks.

He credits the interplay of conscious information processing, which requires paying attention to the task, and automatic processing, which does not.

- Oakland University and Henry Ford Hospital of Detroit, Michigan, have teamed up on a research project

involving the removal of malignant tumors from dogs and cats and which may help doctors find new ways to treat human patients.

The program, which is unique in Michigan and one of three of its kind in the country, is under the direction of Fred W. Hetzel, associate professor of medical physics. Dr. Hetzel is also director of the Division of Radiation Biology at Ford Hospital.

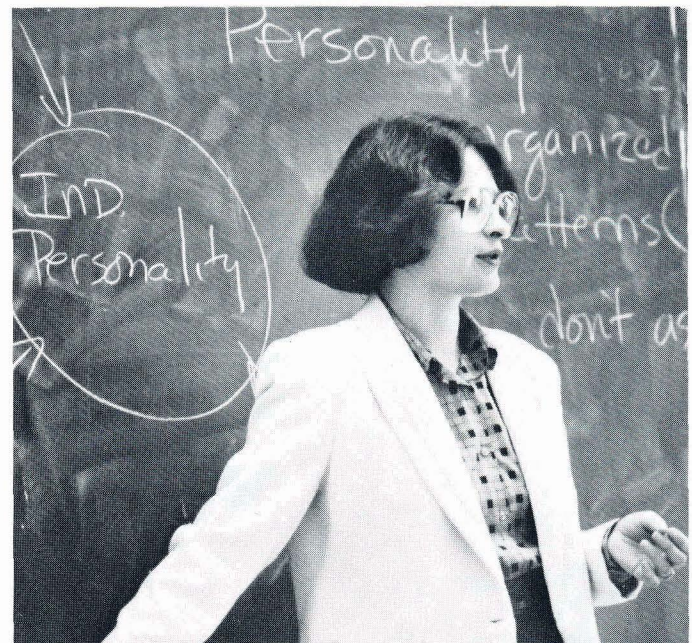
Dr. Hetzel is working with Oakland students and area veterinarians to treat pets that otherwise could not be saved. Each animal is injected with a photosensitive drug that is absorbed by cancerous cells but rejected by normal cells. Later, the animal is anesthetized, and a laser is aimed at the tumor. The laser causes the drug to react and release activated oxygen — killing only the cancerous cells.

- Virinder K. Moudgil, professor of biological sciences, knows hormones are responsible for changes in growth, differentiation, reproduction and many physiological processes, but he is tracking a remaining question — How do they work?

"If we can learn how they work, we'll have a handle on controlling what they do," Dr. Moudgil said.

In his laboratory, Dr. Moudgil and his team of researchers are studying the mechanism of steroid hormone action, especially in relation to progesterone, the hormone required for the initiation and maintenance of pregnancy. Changes in the levels of circulating progesterone also have been shown to be involved in the growth of breast and uterine cancers.

He is conducting basic research on RU-486, an experimental drug now being tested in Europe. The drug holds potential as a new method of birth control and/or as a chemical agent against breast cancer. He has discovered that the drug binds to receptors in the cell and stops the action of progesterone.



Lizabeth A. Barclay's research focuses on organizational life, especially in relation to women.



## Research opportunities for students

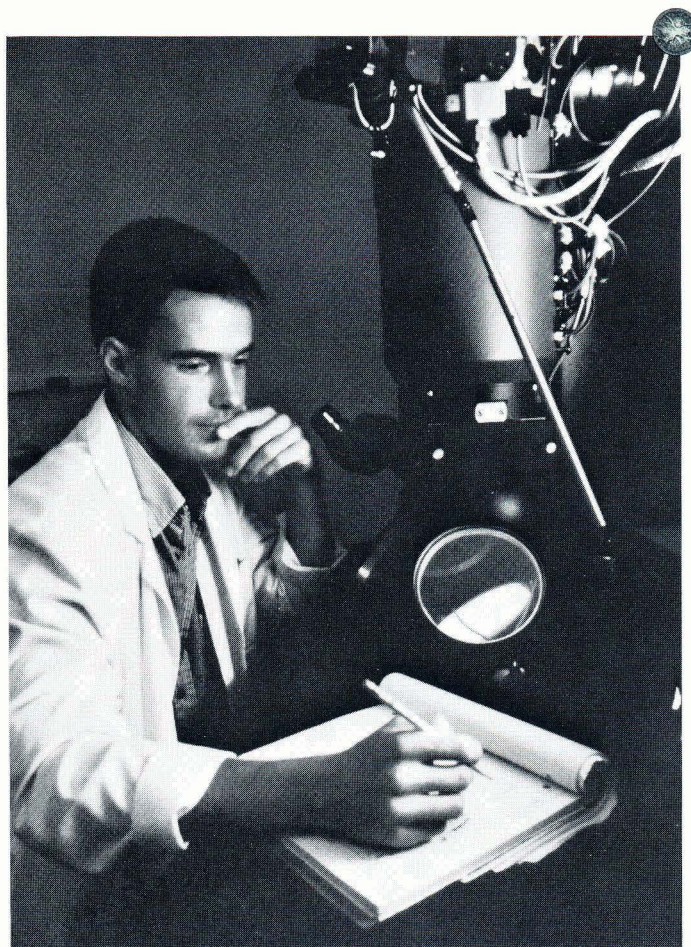
At Oakland University, undergraduate and graduate students have opportunities to work with senior faculty in the Eye Research Institute and other areas. They can compete for research awards offered through the Oakland University Alumni Association, and for the past few years Oakland students have been chosen to display their research at the annual meetings of the American Society for Microbiology and other conventions. Undergraduates have the opportunity to conduct meaningful research with senior professors. They often appear as second authors on papers presented at professional meetings. Biology undergraduates even appear at their own professional meeting each spring, offering papers to faculty and peers, just as they would at national meetings.



*Students broaden their creative horizons through such cultural programs as Oakland's Center for the Arts.*

## An expanded mission

While proud of its research, Oakland University pursues a multi-faceted service role. Under the leadership of President Joseph E. Champagne, Oakland has approved a role and mission involving three charges: to offer instructional programs of high quality leading to degrees at the baccalaureate, master's and doctoral levels, as well as programs in continuing education; to advance knowledge and promote the arts through research, scholarship and creative activity; and to render significant public service. Educa-



*Oakland students find many opportunities to work on professors' research projects or conduct their own.*

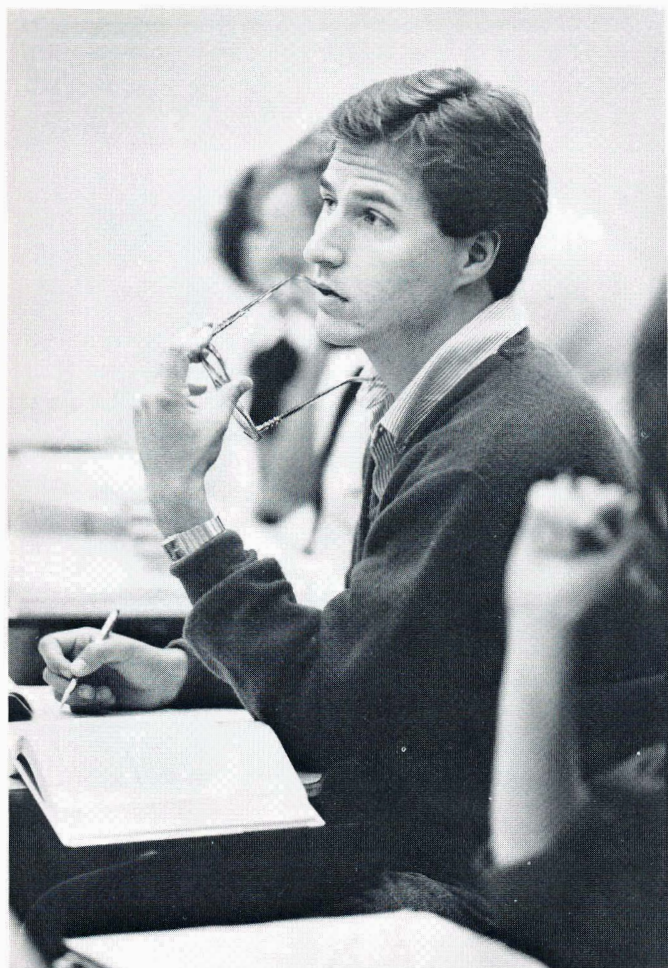
tional leadership is the quality common to all of those charges.

Public service cooperation includes School of Business Administration consulting agreements, mathematics- and continuing education-sponsored statistics and quality control programs with the auto industry, and free computer management aid for small-business owners. The university's liaison with firms in the Oakland Technology Park is strengthened and expanded through the efforts of Oakland's Center for Economic Development and Corporate Services.

Each year, more than 500,000 persons attend the cultural programs of Meadow Brook Music Festival, Theatre, Art Gallery and Hall, and the Center for the Arts, as well as sporting events of Lepley Sports Center. Wellness and fitness programs draw hundreds more to the Meadow Brook Health Enhancement Institute for stress testing, cardiac rehabilitation, health maintenance and diabetes or nutrition workshops.

The Ken Morris Labor Studies Center cooperates with the Continuum Center and the Division of Continuing Education in retraining programs supported by the auto industry and the UAW. Recent labor center programs include coordination of a state-wide program for retraining women and minorities for leadership roles and a labor-management forum. UAW Vice President Donald Ephlin was the first forum lecturer.





*While carefully managing its enrollment, Oakland University remains committed to ensuring accessibility.*

## **A commitment to enrollment management**

Oakland University enrollment was a record 12,707 in the fall 1986 semester, and the university is now engaged in an enrollment management program brought about, in part, by state support that has not kept track with the university's growth and needs. Oakland's challenge is to accomplish this while remaining accessible to those seeking higher education.

In addition to stepped-up high school recruiting, Oakland has begun early intervention programs with nearly 3,000 area seventh graders in Pontiac and Detroit as part of the Project Challenge and Martin Luther King, Jr./Rosa Parks programs. Their purpose is to help socio-economically disadvantaged youngsters realize that a college education is possible for them and that Oakland will work with them to explore such opportunities.

## **A Share in the Vision: The Campaign for Oakland University**

In an effort to supplement insufficient state support, the university last fall launched its first capital campaign — an effort to raise \$15 million for special projects vital to the maintenance of academic excellence. Campaign goals include the expansion of Kresge Library, increased science and computer resources, a special fund to reflect specific donor interests, and an Opportunity Fund supporting the teaching, research and public service activities of the institution.

Oakland University is doing more than paying lip service to its role and mission. It has launched programs that will guarantee the success of those goals, President Champagne says.



*Comerica Incorporated's gift of a computer lab for business students is an example of community support for the Campaign for Oakland University.*



# PAST CHAIRPERSONS



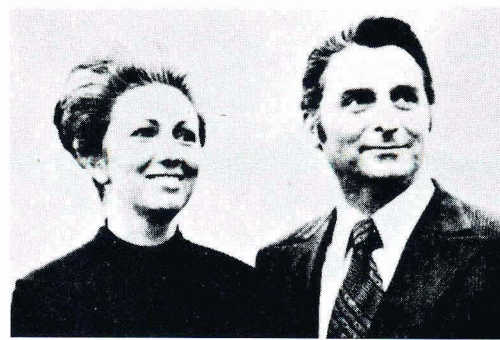
Mr. and Mrs. John J. Riccardo  
Chairpersons 1971



Mr. and Mrs. William P. Benton  
Chairpersons 1972



Mr. and Mrs. Robert D. Lund  
Chairpersons 1973



Mr. and Mrs. Eugene A. Cafiero  
Chairpersons 1974



Mr. and Mrs. Donald E. Petersen  
Chairpersons 1975



Mr. and Mrs. F. James McDonald  
Chairpersons 1976



Mr. and Mrs. John C. Secrest  
Chairpersons 1977



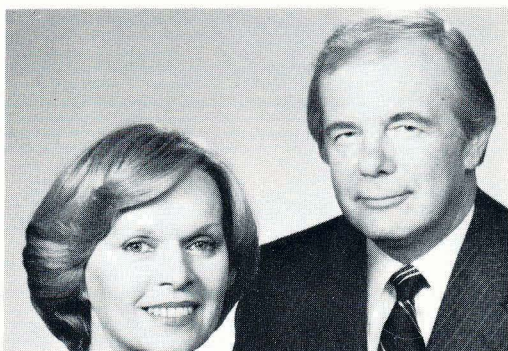
Mr. and Mrs. Richard A. Vining  
Chairpersons 1978



---

## PAST CHAIRPERSONS

---



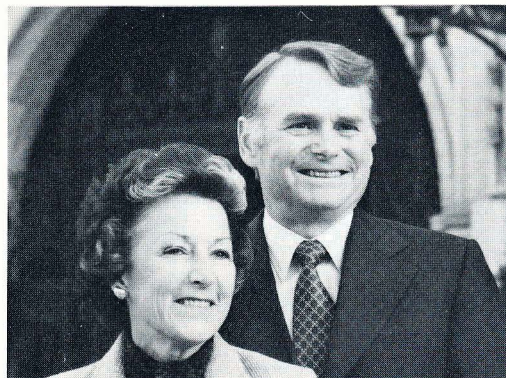
Mr. and Mrs. Bennett Bidwell  
Chairpersons 1979



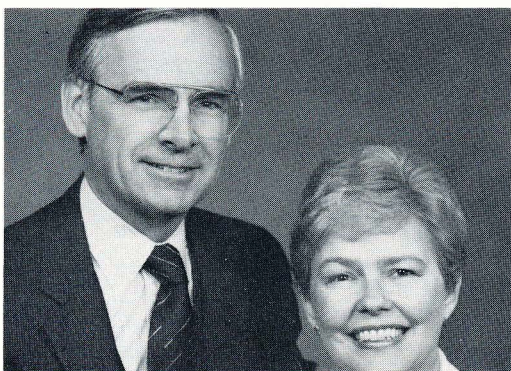
Mr. and Mrs. Roger Smith  
Chairpersons 1980



Mr. and Mrs. Gerald Greenwald  
Chairpersons 1981



Mr. and Mrs. Harold A. Poling  
Chairpersons 1982



Mr. and Mrs. F. Alan Smith  
Chairpersons 1983



Mr. and Mrs. Stephan Sharf  
Chairpersons 1984



Mr. and Mrs. Louis Ross  
Chairpersons 1985



Mr. and Mrs. John R. Edman  
Chairpersons 1986



---

# SPECIAL ACKNOWLEDGMENTS

---

## THE KRESGE FOUNDATION

The Meadow Brook Music Festival expresses its appreciation to one of its most important benefactors — The Kresge Foundation.

In 1964 when the Festival was a dream, the Kresge Foundation made a \$76,000 gift to the capital fund in memory of civic leader and foundation trustee, Howard C. Baldwin, for whom the pavilion is named. A second gift a year later of \$50,000 made possible the permanent seating in the pavilion. Subsequently the Foundation provided an additional capital grant of \$33,000 which provided additional dressing rooms below stage, new electrical circuits, a sound reinforcement system and new restroom facilities. A grant of \$145,000 provided for the repair work in the pavilion and a box office addition in 1977. Most recently, a grant of \$100,000 has been used to upgrade the lighting system, structural improvements in and around the stage area, paving the service road and loading dock area, painting of the seats and girders, and general repair.

## LULA C. WILSON TRUST

The original gifts of the Lula C. Wilson Trust provided the concert shell for the stage house of the Music Festival. The well-known excellent acoustics of Meadow Brook distinguishes the Music Festival as one of the front-rank concert and amphitheatres in North America.

The continuing support of the Lula C. Wilson Trust assists the Music Festival in providing the finest cultural programs to enrich the community as a whole.

## MRS. GEORGE T. TRUMBULL

The original gift of Mr. and Mrs. George T. Trumbull made possible the construction of the Trumbull Terrace dining facility, and patrons of the Meadow Brook Music Festival continue to benefit from their generosity. Mrs. Trumbull has provided improvements to Trumbull Terrace, the magnificent flowers on the grounds, and the tables and chairs in the Cafe Promenade. We are grateful for her continued interest and support.

## MEMORIAL CONCERTS

July 18 — Academy of St. Martin-in-the-Fields  
The West H. Gallogly Memorial Concert

August 1 — Peter, Paul & Mary  
The John S. Judd Memorial Concert

July 19 — Academy of St. Martin-in-the-Fields  
The George T. Trumbull Memorial Concert

August 4 — Perry Como  
The Lois C. Goad Memorial Concert

August 11 — The London Symphony  
The V. Everett Kinsey Memorial Concert

## FESTIVAL CO-SPONSORS

The Meadow Brook Music Festival acknowledges the generous support of its co-sponsors

The Detroit News  
The Detroit Free Press  
The Observer & Eccentric Newspapers

Hudson's  
WJR  
WJZZ  
WQRS

Thursday and Sunday Detroit Symphony Concerts are the  
Chrysler Concert Series  
made possible through the generosity of the Chrysler Corporation Fund

The Meadow Brook Music Festival is funded in part by grants from the Michigan Council for the Arts and the National Endowment for the Arts.



# 1987 Meadow Brook Music Festival/Theatre

## Executive Committee

Mr. and Mrs. Harold K. Sperlich, General Chairpersons  
Mr. and Mrs. Philip E. Benton, Jr., Vice Chairpersons  
Mr. and Mrs. John R. Edman, Past General Chairpersons

### *Advertising and Marketing*

Mr. and Mrs. George F. Beech  
Mr. William J. Shea

### *Corporate Subscription Sales*

Mr. and Mrs. Carl R. Lindell  
Mr. and Mrs. Thomas T. Stallkamp  
Mr. and Mrs. Walton A. Lewis  
Mr. and Mrs. Nicholas V. Scheele  
Mr. and Mrs. James A. Unruh  
Mr. and Mrs. Arthur L. Wiseley

### *Festival Women's Committee*

Mr. and Mrs. Richard B. Armstrong

### *Finance*

Mr. and Mrs. David R. Platt  
Mr. and Mrs. Clinton D. Lauer  
Mr. and Mrs. John E. Rhame

### *Flint Area*

Mr. and Mrs. Thomas L. Pond

### *Long Range Planning*

Mr. and Mrs. Stephan Sharf

### *Public Relations*

Mr. and Mrs. Baron K. Bates

### *Program Advertising*

Mr. and Mrs. Frederick K. Cody  
Mr. and Mrs. Harold E. Allen  
Mr. Joseph A. Campana  
Mr. and Mrs. Philip Guarascio  
Mr. and Mrs. John J. Morrissey  
Mr. and Mrs. John B. Vanderzee

### *Theatre Guild*

Mr. and Mrs. Lawrence G. Matesa

### *Rochester Festival Club*

Dr. and Mrs. Thomas A. Cook  
Mr. and Mrs. Phillip Culmone  
Dr. and Mrs. William L. Ebinger

## Corporate Finance Captains

Donald E. Alexander  
Robert J. Binder  
Gilbert P. Burford  
Keith W. Dunbar  
Richard E. Durkin  
Robert J. Eaton  
Ronald Gardhouse  
Tim A. Guith  
Robert E. Hatfield  
Richard Haupt  
Kennard F. Hill  
James C. Hitchcock

Clare Horwood  
Joseph G. Iamarino  
Bernard A. Konke  
J. J. Lyijynen  
Ronald A. Majeske  
H. C. Moritz  
Ronald S. Nay  
Robert T. O'Connell  
Paul R. O'Hara  
R. J. Piccirilli  
Barry D. Price  
L. R. Raines

James C. Salrin  
Nicholas P. Sneath  
Donald E. Staples  
Ronald L. Stewart  
Paul T. Sullivan  
Warren J. Swan  
Peter Tottis  
John P. Vacketta  
Nicholas A. Vassalo  
James T. Watson  
R. M. Yost  
R. D. Zella



# 1987 MEADOW BROOK ROCHESTER FESTIVAL CLUB

## CO-CHAIRPERSONS

Dr. and Mrs. Thomas A. Cook  
Mr. and Mrs. Phil Culmone  
Dr. and Mrs. William Ebinger

## COMMITTEE

Mr. and Mrs. James R. Avery  
Dr. and Mrs. Kenneth Cerny  
Mr. and Mrs. Paul Chastney  
Mr. and Mrs. John Dziurman  
Dr. and Mrs. Michael Glass  
Mr. and Mrs. William Goudie  
Mr. and Mrs. Paul R. Haig  
Mr. and Mrs. John G. Hoagland

Dr. and Mrs. David Hollett  
Mr. and Mrs. Fred Houghten  
Mr. and Mrs. Noel Huyck  
Mr. and Mrs. Richard B. Kiehl  
Dr. and Mrs. Robert A. Kobylarz  
Mr. and Mrs. William Kulczak  
Mr. and Mrs. Bayard F. Lawes  
Mr. and Mrs. Robert S. Martin  
Mr. and Mrs. Marion Miller

Mr. and Mrs. George A. Noakes  
Mr. and Mrs. Roy E. Parrott  
Mr. and Mrs. Vern A. Pixley, II  
Dr. and Mrs. Harold D. Portnoy  
Mr. and Mrs. Charles L. Schmitz  
Mr. and Mrs. David Shellenbarger  
Mr. and Mrs. James A. Smalley  
Mr. and Mrs. Raymond A. Smith



Dr. and Mrs. Thomas A. Cook  
Chairpersons 1987



Mr. and Mrs. Phil Culmone  
Co-Chairpersons 1987



Dr. and Mrs. William Ebinger  
Co-Chairpersons 1987



# 1987 MEADOW BROOK ROCHESTER FESTIVAL CLUB

## Major Donors

Dr. and Mrs. Lee H. Anschuetz  
Dr. and Mrs. J. Aragones  
Mr. and Mrs. James R. Avery  
Mr. and Mrs. Robert Badgero  
Dr. and Mrs. John V. Balian  
Mr. and Mrs. Robert J. Bemis  
Mr. and Mrs. Charles E. Black  
Mr. and Mrs. David D. Bratton  
Dr. and Mrs. Richard G. Brooks  
Dr. and Mrs. Roger C. Byrd  
Mr. and Mrs. Carroll B. Chapman  
Mr. and Mrs. Paul Chastney  
Mr. and Mrs. Harold R. Colman  
Dr. and Mrs. Thomas A. Cook  
Mr. and Mrs. John R. Curtin  
Mr. and Mrs. R. Dilloway  
Mr. and Mrs. Al W. Dittrich  
Dr. and Mrs. Patrick H. Dwyer  
Mr. and Mrs. Donald K. Easley  
Dr. and Mrs. William L. Ebinger  
Mr. and Mrs. H. Bernard Ernst  
Dr. and Mrs. Arthur D. Even  
Mr. and Mrs. Donn A. Fasbender  
Federal Mogul Corporation  
Dr. and Mrs. Dean S. Fields  
Mr. and Mrs. Duane Finch  
Mr. Donald D. Foss  
Mr. and Mrs. Keith D. Gardels  
Mr. and Mrs. Michael Glass  
Mr. and Mrs. R. Raymond Gorshe  
Mr. and Mrs. William R. Goudie  
Mr. and Mrs. Dale Hanson  
Mr. and Mrs. David Hollett  
Dr. and Mrs. James V. Huebner  
Mr. and Mrs. Noel Huyck  
Mr. and Mrs. Edward Ingalls  
Jacobson's  
Mr. and Mrs. Robert H. Jeske  
Mr. and Mrs. William H. John  
Mr. and Mrs. Kenneth Johnston  
Mr. and Mrs. Steven Kavulich  
Mr. and Mrs. Kenneth A. Kerns  
Dr. and Mrs. John S. Kerns  
Mr. and Mrs. Richard B. Kiehl  
Mr. and Mrs. Wesley L. Koch, Jr.  
Mr. and Mrs. Ross Lindsay  
Mr. and Mrs. M. W. Markwardt  
Mr. and Mrs. Robert S. Martin  
Mr. and Mrs. Michael D. McCoy  
Dr. and Mrs. Thomas Millman  
Dr. and Mrs. Moufid Mitri  
Mr. and Mrs. William A. Mitzelfeld  
Mr. and Mrs. Douglas E. Monks  
Mr. and Mrs. David Monroe  
Mr. and Mrs. Patrick E. Moran  
Mr. and Mrs. Daniel T. Murphy, Jr.  
Mr. and Mrs. Thomas B. Nelcamp  
Mr. and Mrs. Roy Parrott  
Mr. and Mrs. Joseph Perk  
Mr. and Mrs. George Poffenberger  
Mr. and Mrs. William R. Potere  
Dr. and Mrs. Steven C. Reynolds  
Mr. and Mrs. Peter Roemer

Mr. and Mrs. Charles L. Schmitz  
Mr. and Mrs. Kenneth Schwark  
Dr. Walter J. Sepura  
Mr. and Mrs. David Shellenbarger  
Mr. and Mrs. James M. Shook  
Mr. and Mrs. David Fred Smith  
Mr. and Mrs. Raymond A. Smith  
Mr. and Mrs. Ever A. Swanson  
Mr. and Mrs. Gerald A. Tarquinio  
Mr. and Mrs. Kenneth Tippery  
Dr. and Mrs. Raymond L. Tremblay  
Mr. and Mrs. Duane W. Utech  
Ms. Janet K. Varner  
Mr. and Mrs. William R. Wallin  
Mr. and Mrs. Clarence E. Whitbey  
Mr. and Mrs. Donn Whitmer  
Mr. Richard H. Wilcox  
Mr. and Mrs. Ronald A. Wonboy  
Mr. and Mrs. Robert W. Wysocki

## Contributors

Dr. Larry K. Aagesen  
Mr. and Mrs. Louis A. Abate  
Mr. and Mrs. Charles Allen  
Mr. and Mrs. Donald Anderson  
Mr. and Mrs. William Atkinson  
Dr. and Mrs. Bradley Barnes  
Mr. and Mrs. William Beardmore  
Mr. and Mrs. Donald W. Beattie  
Mr. and Mrs. Horace O. Bedsole  
Mr. and Mrs. William Belaney  
Mr. and Mrs. Milford R. Bennett  
Mr. John Bisha  
Mr. and Mrs. William R. Bleisch  
Dr. and Mrs. Kenneth Bonk  
Mr. Bruce A. Bordine  
Dr. and Mrs. Thomas Borgula  
Mrs. Edward N. Bowen  
Ms. Patti Brooks  
Mr. and Mrs. John Burr  
Mrs. R. G. Burroughs  
Dr. and Mrs. J. Kenneth Cerny  
Mr. and Mrs. Charles E. Chambliss  
Mr. and Mrs. Edward Colosima  
Ms. Barbara Corbett  
Mr. and Mrs. Ronald Crews  
Mr. and Mrs. Charles L. Crissman  
Dr. and Mrs. Paul Croissant  
Mr. and Mrs. William Crum  
Mr. and Mrs. Phillip Culmone  
Mr. and Mrs. Ronald Cupp  
Mr. and Mrs. Richard J. DeLoof  
Dr. and Mrs. Frank N. Derr  
Mr. and Mrs. Raymond deSteiger, Jr.  
Mr. and Mrs. Paul Drinkard  
Dr. and Mrs. Peter A. Duhamel  
Dr. and Mrs. John Dudek  
John and Kathy Dziurman  
Mr. and Mrs. Larry Edwards  
Dr. Horace Floyd  
Dr. and Mrs. Donald P. Fox  
Mr. and Mrs. John Frederick  
Mr. and Mrs. Derek Furneaux-Jenkins  
Mr. and Mrs. Stephen B. Gain

Mr. and Mrs. Jack Gallagher  
Mr. and Mrs. Robert Garlick  
Mr. and Mrs. Len Gay  
Dr. and Mrs. Melvin J. Gay  
Mr. and Mrs. Ken Gertz  
Mr. and Mrs. Albert R. Gimesky  
Dr. and Mrs. Michael Glass  
Ms. Susan Glass  
Mr. and Mrs. Dennis Gormley  
Greater Rochester Chamber of  
Commerce  
Dr. and Mrs. James Greenlees  
Dr. and Mrs. James Greer  
Mr. and Mrs. William Gruebnaue  
Mr. and Mrs. Robert Hague  
Mr. and Mrs. Paul Haig  
Dr. and Mrs. Arch Hall  
Dr. and Mrs. William Hardy  
Mr. and Mrs. Steven Harms  
Mr. and Mrs. Peter J. Harris  
Mr. and Mrs. Carl Hasselwander  
Mr. R. A. Head  
Dr. and Mrs. Timothy Hickey  
Mr. and Mrs. E. Hoagland  
Mr. and Mrs. Fred Houghten  
Mr. and Mrs. John Huntington  
Nina and Bart Huthwaite  
International Diamond Importers  
Mayor Billie Ireland  
Mr. and Mrs. Theodore Jacob  
Mr. and Mrs. Jeffrey Jacobson  
Mr. and Mrs. Daniel J. Jarackas  
Dr. and Mrs. Robert H. Johnson  
Dr. and Mrs. Eric Johnston  
Jonna Construction Company  
Mr. and Mrs. Richard O. Kageff  
Mr. and Mrs. Bruce Kalina  
Mr. and Mrs. Terrance E. Kaye  
Mr. and Mrs. Brian Kett  
Mr. and Mrs. Terry King  
Mr. and Mrs. Thomas Klein  
Mr. Roger Knapp  
Dr. and Mrs. Robert A. Kobylarz  
Marv and Kathy Koler  
Dr. and Mrs. Bruce Kresge  
Dr. and Mrs. W. Kubinski  
Mr. and Mrs. William Kulczak  
Mr. Julius Kusey  
Mr. Richard Lantzy  
Mr. and Mrs. Bayard Lawes  
Mr. and Mrs. Warren Lepp  
Mr. and Mrs. James Leszczynski  
Mr. and Mrs. Harris O. Machus  
Mr. and Mrs. Robert Martin  
Mr. and Mrs. Lawrence Matesa  
Mr. and Mrs. Dan Matthews  
Dr. Sue A. McCutcheon  
Mr. and Mrs. Robert J. McGarry  
Patrick J. McKay  
Mr. Ed McKibbin  
Honorable Judge and Mrs. McNally  
Connie Mercer  
Dr. and Mrs. Joseph Messana  
Mr. and Mrs. Robert J. Meyer

Mr. Ron Michalak  
Mr. and Mrs. Marion Miller  
Mr. and Mrs. Lamont Mitzelfeld  
John and Mary Modetz  
Mr. and Mrs. Charles Monte  
Mr. and Mrs. David E. Mowers  
Dr. and Mrs. Donald Muenk  
Mr. and Mrs. Alton H. Myers  
Mr. and Mrs. George J. Newton, Jr.  
Ms. Marilyn Nix  
Mr. and Mrs. George A. Noakes  
Mr. and Mrs. Doug Otlewski  
Mr. and Mrs. Edgar Parks  
Dr. and Mrs. Andrew Pasternak  
Mr. and Mrs. David Pearcy  
Mrs. John Peterson  
Mr. and Mrs. David Phelps  
Mr. and Mrs. Vern A. Pixley, II  
Mrs. Harold Pocklington  
Mr. and Mrs. Robert Potere  
Mr. and Mrs. Thomas Pratt  
Larry and Shirley Prudhomme  
Mr. and Mrs. Jerry Pruitt  
Dr. Thomas Przybylski  
Mr. and Mrs. Glen Purdy  
Mr. Thomas M. Pulte  
Mr. and Mrs. Mark Ratliff  
Dr. and Mrs. Edward Rice  
Dr. and Mrs. Ulrich Ringwald  
Mr. and Mrs. Thomas Roberts  
Mr. and Mrs. Ronald Roesler  
Mr. and Mrs. Dennis Ruen  
Mr. and Mrs. Thomas Russell  
Dr. and Mrs. Robert M. Savin  
Mr. and Mrs. Thomas Schaden  
Mr. and Mrs. Wilhelm Schmelzer  
Dr. and Mrs. John Schultz  
Mr. and Mrs. Arthur Sezwick  
Mr. and Mrs. G. Graham Silcox  
Mr. and Mrs. Michael Skiles  
Mr. and Mrs. James A. Smalley  
Drs. Joel and Kathy Smiler  
Mr. and Mrs. David Steffes  
Mr. and Mrs. Lawrence Sunblad  
Mr. and Mrs. Lawrence Terman  
"The Pharmacy"  
Mr. and Mrs. Eugene Timm  
Mr. and Mrs. Arthur Tonna  
Upper Peninsula Brand Pasties  
Mr. and Mrs. Terry Upton  
Jane Roane Veitch  
Mr. and Mrs. Peter Vernia  
Mr. and Mrs. Roger Waid  
Mr. and Mrs. William Walker III  
Dr. and Mrs. Marvin Weisman  
Mr. and Mrs. James Western  
Dr. and Mrs. Ralph F. Woodbury  
Mr. and Mrs. Harlan Worden  
Dr. and Mrs. Robert J. Zobl  
Mr. and Mrs. Richard Zunker

We regret the omission of those names received too late for publication



# DETROIT SYMPHONY ORCHESTRA

## Gunther Herbig, Music Director



Since its founding 73 years ago, the Detroit Symphony Orchestra has played to thousands of audiences, received high acclaim at home and on tour, and earned a reputation as one of the country's leading symphonies.

Today's Orchestra is a testimony to the vision of a group of civic-minded women who sponsored the first Detroit Symphony concert. Through their efforts the Detroit Symphony Society gave a trial concert under the baton of Weston Gales, a 27-year-old church organist and conductor. He led the Symphony's first public concert on November 19, 1914, and remained as Music Director until 1917.

Following two seasons of guest conductors, in 1919 the Orchestra engaged internationally known pianist-conductor Ossip Gabrilowitsch. Which resulted in a golden age which lasted until 1935.

Under Gabrilowitsch, the Orchestra reached new levels of achievement. He oversaw the building of Orchestra Hall, the new home of the Detroit Symphony, and formed the Detroit Symphony Choir. With Arthur Schnabel in 1922, Gabrilowitsch

and the Orchestra took part in the first complete symphonic radio broadcast. At the 1934 Chicago Century of Progress Exposition, as the Ford Symphony, they played two concerts a day for 94 days with a total audience of over one million visitors. From this success sprang the Ford Symphony Hour radio broadcasts, which continued until 1942.

Following Gabrilowitsch's death in 1936, the Detroit Symphony was led by a duo regime of American conductor Victor Kolar and Franco Chione of Italy. By 1942, labor and management difficulties forced suspension of the season. When it resumed concerts in 1944, German conductor Karl Krueger was at the helm. During his tenure Detroit's Music Hall became the Orchestra's new home. Krueger's resignation in 1949 again led the Orchestra to disband for two seasons.

John B. Ford, brought the Detroit Symphony back to life in 1951 with the consolidated support of unions, corporations, foundations, individuals and the public at large. French conductor Paul Paray was appointed Music Director, beginning a reign which lasted until his retirement in 1962. Under Paray's leadership the Orchestra made over 65 recordings, continued its radio broadcasts, and in 1956 moved to the newly built Ford Auditorium.

Swedish conductor Sixten Ehrling, who succeeded Paray from 1963 to 1973, introduced an era of adventuresome music making, including 24 world premieres. He also became the Music Director of the newly created Meadow Brook Music Festival, the permanent summer home of the Detroit Symphony. Aldo Ceccato served as principal conductor during the 1973-74 season, and as Music Director until 1977.

Antal Dorati became the ninth music director of the Detroit Symphony Orchestra in September 1977. During the four following years, the Orchestra flourished and gained international attention through festivals, opera productions, and tours to the east coast. Under Maestro Dorati's direction, the Orchestra made its first European tour in 1979, performing 24 concerts in eight countries.

In November 1980, Antal Dorati resigned as the Detroit Symphony's Music Director effective May 1981 and became the Orchestra's Conductor Laureate. Israeli conductor Gary Bertini served as the Symphony's music adviser for the next two seasons.

German conductor Gunther Herbig became the Detroit Symphony's tenth Music Director in September 1984. Under his direction, the Orchestra made its first Carnegie Hall appearance in four years, performed at the 1985 Casals Festival in Puerto Rico, played a special concert celebrating the 99th birthday of the Statue of Liberty, and jointly commissioned — along with Carnegie Hall and the American Symphony Orchestra League — a piano concerto from Pulitzer Prize-winning composer Ellen Taaffe Zwilich which had its world premiere in June 1986. The Orchestra returns regularly to Carnegie Hall under his direction. His first two years in Detroit also brought the formation of the Detroit Symphony Chorus and Chorale, as well as artistic direction of the Orchestra's 8-week summer concert season at the Meadow Brook Music Festival.



# DETROIT SYMPHONY ORCHESTRA

**Gunther Herbig**

*Music Director*

**Antal Dorati**

*Conductor Laureate*

**Stephen Stein**

*Exxon/Arts Endowment Conductor*

**Eric Freudigman**

*Director of Chorus*

## First Violins

Gordon Staples+  
*Concertmaster*

Bogos Mortchikian

*Associate Concertmaster*

Joseph Goldman

Gordon Peterson

*Assistant Concertmasters*

Beatriz Budinsky\*

Marguerite Deslippe-Andrews\*

Derek Francis

Alan Gerstel

Nicholas Zonas

Elias Friedenzohn\*

Malvern Kaufman\*

Richard Margitza\*

Linda Snedden-Smith\*

Ann Ourada Strubler\*

LeAnn Toth\*

Margaret Tundo\*

Stacey Woolley\*

## Second Violins

Geoffrey Applegate+

Felix Resnick++

Alvin Score

Lillian Fenstermacher

Ricardo Cyncynates

Ronald Fischer\*

Lenore Sjoberg\*

Walter Maddox

Roy Bengtsson

Thomas Downs

Yien Hung\*

Robert Murphy\*

Jacob Robbins\*

Bruce Smith\*

Joseph Striplin\*

James Waring\*

## Violas

Alexander Mishnaevsky+

James VanValkenburg++

Philip Porbe

Vincent J. Lioni

LeRoy Fenstermacher

Hart Hollman

Walter Evich

Gary Schnerer

Catherine Compton

David Ireland

Glenn Mellow

Darryl Jeffers

## Violoncellos

Italo Babini+

James C. Gordon *Chair*

Marcy Chanteaux++

John Thurman

Mario DiFiore

Debra Fayroian\*

Barbara Hassan

David Saltzman

Carole Gatwood\*

Haden McKay\*

Dennis Parker\*

Paul Wingert\*

## Basses

Robert Gladstone+

Stephen Molina++

Maxim Janowsky

Linton Bodwin

Stephen Edwards

Craig Rifel

Donald Pennington

Marshall Hutchinson

Raymond Benner

## Harp

Elyse Ilku+

## Flutes

Ervin Monroe+

Shaul Ben-Meir

Robert Patrick++

Clement Barone

## Piccolo

Clement Barone

## Oboes

Donald Baker+

Shelley Heron

Robert Sorton++

Treva Womble

## English Horn

Treva Womble

## Clarinets

Paul Schaller+

Douglas Cornelsen

Laurence Liberson++

Oliver Green

## E-flat Clarinet

Laurence Liberson

## Bass Clarinet

Oliver Green

## Bassoons

Robert Williams+

Victoria King

Paul Ganson++

Lyell Lindsey

## Contrabassoon

Lyell Lindsey

## Horns

Eugene Wade+

Bryan Kennedy

Corbin Wagner

Willard Darling

Mark Abbott++

Keith Vernon

## Trumpets

Ramon Parcells+

Kevin Good

Alvin Belknap++

Gordon Smith

## Trombones

Raymond Turner+

Joseph Skrzynski

Nathaniel Gurin++

Randall Hawes

## Tuba

Wesley Jacobs+

## Timpani

Salvatore Rabbio+

Robert Pangborn++

## Percussion

Robert Pangborn+

Norman Fickett++

Raymond Makowski

Sam Tundo

## Librarians

Elkhonon Yoffe

Charles Weaver, *Assistant*

## Personnel Managers

Oliver Green

Stephen Molina, *Assistant*



+Principal  
++Assistant Principal

\*These members may voluntarily revolve seating within the section on a regular basis.



# 1987 MAJOR DONORS

## TO

### THE MEADOW BROOK MUSIC FESTIVAL AND THEATRE

A T & G Company, Inc.  
 Mrs. Richard F. Adair\*  
 Mr. and Mrs. Felix T. Adams\*  
 Advanced Friction Materials Co.  
 Allied Automotive, Bendix Safety Restraints Division  
 Allied Corporation Foundation  
 American Motors Corporation  
 Dr. and Mrs. Lee H. Anschuetz\*  
 Approved Manufacturing Company, Inc.  
 Dr. and Mrs. J. Aragonés\*  
 Mr. and Mrs. Richard B. Armstrong  
 Astro Netics Inc.  
 Automotive Products (U.S.A.) Inc.  
 Mr. and Mrs. James R. Avery\*  
 Mr. and Mrs. William B. Bachman, Jr.\*  
 Mr. and Mrs. Robert L. Badgero\*  
 BAE Industries, Inc.  
 Dr. and Mrs. John V. Balian\*  
 Dr. and Mrs. Guy Barnicoat\*  
 BASF Corporation - Inmont Division  
 Dorry and Baron Bates  
 Mr. and Mrs. Howard P. Baum  
 Mr. and Mrs. Theodore R. Beck\*  
 Mr. and Mrs. Robert J. Bemis\*  
 Mr. and Mrs. M. G. Bibbee  
 Bing Steel, Inc.  
 Mr. and Mrs. Charles E. Black\*  
 Mr. and Mrs. William Bleisch\*  
 Bohn/ADEC Group, Wickes Mfg. Company  
 Borg-Warner Automotive, Inc.  
 Jack Bott  
 Dr. and Mrs. Michael F. Boyle, III\*  
 Mr. and Mrs. David D. Bratton\*  
 Dr. and Mrs. Richard G. Brooks\*  
 T. B. Bruce  
 Mr. and Mrs. George A. Brundrett\*  
 The Budd Company  
 Burlington Northern Air Freight  
 Mrs. Martin L. Butzel  
 Dr. and Mrs. Roger C. Byrd\*  
 Canadian ASE, Ltd. — SEMEC  
 Mr. and Mrs. Ralph A. Caponigro\*  
 Mr. and Mrs. Carroll B. Chapman\*  
 Mr. and Mrs. Lester Paul Chastney\*  
 Mr. and Mrs. Robert Check\*  
 Mr. and Mrs. Harold R. Coltman\*  
 The Columbus Auto Parts Co.  
 Comerica Incorporated  
 Commercial Contracting Corporation  
 Complete Auto Transit, Inc.  
 Continental Plastics Co.  
 Dr. and Mrs. Thomas A. Cook\*  
 Mr. and Mrs. Ronald H. Cooley\*  
 Creative Industries Group, Inc.  
 Cross & Trecker Foundation  
 Mr. and Mrs. John R. Curtin\*  
 D & K Switching, Inc.  
 Mr. and Mrs. David W. Dale\*  
 Ms. Glenna M. Daniels\*

Mr. and Mrs. Fred E. Darter\*  
 Mr. Walter E. Davison\*  
 Dayton Walther Corporation  
 Mr. and Mrs. Richard J. DeLoof\*  
 Detroit Center Tool, Inc.  
 Detroit Edison  
 Mr. and Mrs. Ronald J. Dichtel\*  
 Mr. and Mrs. Richard W. Dilloway\*  
 Mr. and Mrs. Al Dittrich\*  
 Doehler-Jarvis  
 Mr. and Mrs. Thomas J. Doherty\*  
 Mr. and Mrs. Steve Dolen\*  
 Douglas & Lomason Company  
 Dr. and Mrs. Peter A. Duhamel\*  
 Dr. and Mrs. Patrick H. Dwyer\*  
 E & L Transport Company  
 Eagle Packaging Corporation  
 Mr. and Mrs. Donald K. Easley\*  
 Eaton Corporation  
 Dr. and Mrs. William L. Ebinger\*  
 Mr. and Mrs. John R. Edman  
 Mr. and Mrs. Frank E. Eland\*  
 Electronic Data Systems Corporation  
 Mr. and Mrs. Patrick A. Elwell\*  
 Mr. and Mrs. Francis A. Engelhardt\*  
 Mr. and Mrs. H. Bernard Ernst\*  
 Dr. and Mrs. Arthur D. Even\*  
 Federal-Mogul Corp.  
 Fetz Engineering Co.  
 Dr. and Mrs. Dean S. Fields\*  
 Mr. and Mrs. Duane R. Finch  
 Firestone Tire & Rubber Co.  
 Fischbach/Natkin Company  
 Mr. and Mrs. Stephen A. Fitzpatrick\*  
 Fleet Carrier Corporation  
 Mr. Donald D. Foss\*  
 Mr. and Mrs. Clyde Foster\*  
 Frisbie Moving and Storage Company  
 Gallant Transport Inc.  
 Mr. and Mrs. Keith D. Gardels\*  
 Dr. and Mrs. Zack G. Gardlund\*  
 GenCorp  
 Getrag Gears of North America, Inc.  
 Mr. and Mrs. Michael Glass\*  
 Mrs. L. C. Goad\*  
 Goodyear Tire & Rubber Co.  
 Mr. and Mrs. R. Raymond Gorshe\*  
 Mr. and Mrs. William R. Goudie  
 Mr. and Mrs. William J. Guay\*  
 Haden Schweitzer Corporation  
 Mr. and Mrs. David Handleman\*  
 Mr. and Mrs. Dale F. Hanson\*  
 Mr. and Mrs. Barry R. Harper\*  
 Hofley Manufacturing Company  
 Mr. and Mrs. David Hollett  
 Mr. and Mrs. Philip J. Houdek\*  
 Mr. and Mrs. Robert G. Howald, Jr.\*  
 Howell Industries, Inc.  
 Dr. and Mrs. James V. Huebner\*  
 Mr. and Mrs. Franklyn M. Huff\*

Mr. and Mrs. Noel C. Huyck\*  
 ITW — Deltar  
 Mr. and Mrs. Edward Ingalls\*  
 International Business Machines  
 Jacobson's  
 Mr. Tim G. Jaeger  
 Mary Lou and Richard Janes  
 Mr. and Mrs. Robert H. Jeske\*  
 Mr. and Mrs. William H. John\*  
 Johnson Prototypes, Inc.  
 Mr. and Mrs. D. Ross Johnston\*  
 Mr. and Mrs. Henry C. Johnson\*  
 Mr. and Mrs. Kenneth D. Johnston\*  
 Jones Transfer Company  
 Mr. and Mrs. A. Randolph Judd\*  
 Mrs. John S. Judd\*  
 Kmart Corporation  
 Mr. and Mrs. Steven Kavulich\*  
 Mr. and Mrs. Stanley R. Keeney\*  
 Kelsey-Hayes Company  
 Mr. and Mrs. Kenneth A. Kernen\*  
 Dr. and Mrs. John S. Kerns\*  
 Mr. and Mrs. Richard B. Kiehl\*  
 The Knudsen Foundation  
 Mr. and Mrs. Wesley L. Koch, Jr.\*  
 Mrs. Nathan O. Krause\*  
 (In memory of "Nate Krause")  
 Mrs. Roger M. Kyes\*  
 F. Joseph Lamb Co.  
 Lamb Technicon Corp.  
 Mr. and Mrs. Frank A. Lanza\*  
 Laughter Corporation  
 Leaseway Transportation Corp-Automotive Group  
 Mr. and Mrs. Ross Lindsay\*  
 Dr. and Mrs. Berton L. London\*  
 Mr. and Mrs. Robert J. Long\*  
 Luk Incorporated  
 Lyon Foundation  
 Mr. and Mrs. John P. Maloney\*  
 Mr. and Mrs. M. W. Markwardt\*  
 Mr. and Mrs. Robert S. Martin  
 Mr. and Mrs. Kenneth J. McCarter\*  
 Mr. and Mrs. Michael D. McCoy\*  
 Mr. and Mrs. Donald D. McCready\*  
 Mr. and Mrs. Robert J. McGarry\*  
 Meadow Brook Theatre Guild  
 The Mettalo Corporation  
 Metalworking Lubricants Co.  
 Metropolitan Life Foundation  
 Mr. and Mrs. Robert J. Meyer\*  
 Michigan Bell  
 Michigan Rivet Corporation  
 Mr. and Mrs. Constantin V. Micuda\*  
 Mr. and Mrs. Milton J. Miller  
 Dr. and Mrs. Thomas Millman  
 Dr. and Mrs. Moufid Mitri\*  
 Mitsubishi Heavy Industries America  
 Mitsubishi International Corporation  
 Mr. and Mrs. William A. Mitzelfeld\*

\*Members of the Oakland University President's Club



# 1987 MAJOR DONORS TO THE MEADOW BROOK MUSIC FESTIVAL AND THEATRE

Mr. and Mrs. Ronald W. Monchak  
Mr. and Mrs. Douglas E. Monks\*  
Mr. and Mrs. David Monroe\*  
Mr. and Mrs. Patrick E. Moran\*  
Morris Associates, Inc.  
Motorola, Inc. AIEG  
Mrs. Charles S. Mott\*  
Mr. and Mrs. Daniel T. Murphy, Jr.\*  
NTN Bearing Corporation  
National Bank of Detroit  
National Industries, Inc.  
Mr. and Mrs. Thomas B. Nelcamp\*  
Mr. and Mrs. John A. Nelson  
Mr. and Mrs. George M. Newton\*  
Mr. and Mrs. Loring F. Nies  
Nippondenso Sales, Inc.  
Mr. and Mrs. Henry R. Nolte  
Northern Engraving Corporation  
Mr. and Mrs. Charles A. O'Brien\*  
Mr. John L. O'Connor\*  
Mr. and Mrs. Donald A. Pais  
Palmer Moving & Storage Co.  
Mr. and Mrs. Roy E. Parrott\*  
Mr. Theodore P. Paulnock\*  
Peat, Marwick, Mitchell & Co.  
Mr. and Mrs. Joseph H. Perk\*  
Mr. and Mrs. O. L. Pfaffmann\*  
Pioneer Engineering & Manufacturing Co., Inc.  
Mr. and Mrs. Don G. Pixley\*  
Mr. and Mrs. David R. Platt  
Mr. and Mrs. George D. Poffenberger\*  
Mr. and Mrs. Harold A. Poling\*  
Mr. and Mrs. John A. Porter\*  
Mr. and Mrs. William R. Potere\*  
Pridgeon & Clay, Inc.  
Prince Corporation  
Mr. and Mrs. David C. Prybys\*

Raymark Industries  
Regal Stamping  
Dr. and Mrs. Steven C. Reynolds\*  
Mr. and Mrs. Howard T. Rice\*  
Mr. and Mrs. Thomas E. Roberts\*  
Rockwell International Automotive Operations  
Mr. and Mrs. Peter Roemer\*  
Mr. and Mrs. William E. Rogerson\*  
Mr. and Mrs. Irving Rose\*  
Ross Roy, Inc.  
Mr. and Mrs. Louis R. Ross\*  
Mrs. Kay F. Ryan\*  
Sachs Automotive Center-Troy  
Mr. and Mrs. Charles L. Schmitz\*  
Mr. and Mrs. Kenneth Schwark  
Mr. and Mrs. David W. Scott\*  
Dr. Walter J. Sepura\*  
Mr. and Mrs. Ian C. Shaw\*  
Mr. and Mrs. David F. Shellenbarger\*  
Sheller-Globe Corporation  
Mr. and Mrs. James M. Shook\*  
Siegel-Robert Inc.  
Mr. and Mrs. G. Graham Silcox\*  
Simpson Industries Fund  
A. G. Simpson Company Limited  
George M. and Mabel H. Slocum Foundation  
Mr. and Mrs. D. Fred Smith\*  
Mr. and Mrs. Kenneth F. Smith  
Mr. and Mrs. Raymond A. Smith  
Dr. and Mrs. John F. Solverson\*  
Dr. and Mrs. Richard G. Somerlott\*  
Dr. and Mrs. Frederick J. Stare\*  
Mr. and Mrs. Charles R. Steele\*  
Patricia A. and Robert C. Stempel  
Stone Container Corporation  
The Stroh Brewery Company  
Superior Plastic, Inc.

Dr. and Mrs. Ever A. Swanson\*  
Mr. Alvin T. Swope  
TRW Steering & Suspension Division  
Mr. and Mrs. Gerald A. Tarquinio\*  
Mr. and Mrs. LeRoy D. Taylor  
Tenneco Automotive  
Howard Ternes Packaging Co.  
J. Walter Thompson USA  
Mr. and Mrs. Kenneth A. Tippery\*  
Mr. and Mrs. Arthur S. Tobiassen\*  
Touche Ross & Co.  
Dr. and Mrs. Raymond L. Tremblay\*  
Tri-State Expedited Services, Inc.  
Mrs. George T. Trumbull\*  
Mr. and Mrs. Charles S. Tuesday  
Unisys Corporation  
United Technologies Automotive, Inc.  
Universal Airlines, Inc.  
Mr. and Mrs. Duane W. Utech\*  
VDO-Yazaki Corporation  
R. A. Van DeVelde & Associates  
Mr. and Mrs. Richard C. VanDusen  
Ms. Janet K. Varner\*  
Vinewood Metalcraft, Inc.  
Mr. and Mrs. Richard A. Vining\*  
Vispac, Inc.  
Volkswagen of America, Inc.  
Hiram Walker Inc.  
Mr. and Mrs. William R. Wallin\*  
Mr. and Mrs. John R. Waski\*  
Mr. and Mrs. H. Wayne Wells\*  
Mr. and Mrs. Raymond W. West\*  
Mr. and Mrs. Clarence E. Whitbey\*  
White Tower Laundry  
Mr. and Mrs. Donn B. Whitmer\*  
Mr. and Mrs. Sam B. Williams\*  
Mr. and Mrs. Ronald A. Wonboy\*  
Mr. and Mrs. Robert W. Wysocki\*  
Young & Rubicam

*\*Members of the Oakland University President's Club*

Our very special appreciation to the following donors whose contributions to Meadow Brook indicate they have placed these cultural programs high among the many activities they support for the benefit of this community.

CHRYSLER CORPORATION  
THE FESTIVAL WOMEN'S COMMITTEE  
FORD MOTOR COMPANY FUND  
GENERAL MOTORS CORPORATION

J.L. HUDSON COMPANY  
THE ROCHESTER FESTIVAL CLUB  
LULA C. WILSON TRUST FUND

*We regret the omission of those names received too late for publication.*

*The Meadow Brook Music Festival and Meadow Brook Theatre are joined administratively and the Finance Committee conducts a joint campaign. While some contributions were specifically designated for the Theatre, they are included in this listing in order to acknowledge them at this time.*



# CONTRIBUTIONS TO THE MEADOW BROOK MUSIC FESTIVAL AND THEATRE

## CONTRIBUTORS

Accurate Stamp Co.  
Mr. Richard E. Acosta  
Active Aero Charter, Inc./  
Robert J. Phelps  
Adair Printing Co.  
Mr. and Mrs. Nat Adamson  
Addy-Morand Machinery Co.  
Mr. and Mrs. William G. Agnew  
Mr. Bruce W. Alexander  
Alfran Incorporated  
Sandra Allam  
Allen Automated Systems Co.  
Allen Electric Supply Co.  
Alliance Steel, Inc.  
American Fibrat  
American Koyo Corporation  
American Transport Leasing, Inc.  
Anchor Fasteners Sales Co.  
Anchor Swan  
Jane and Timothy Anthony  
Apex Castings Inc.  
Apex Corporation  
A Friend of Meadow Brook  
Mary and Donald Armstrong  
Arnold Tool Engineering Co.  
Arrowsmith Tool & Die  
Atlas Copco Industrial Tools Inc.  
Mr. William R. Atwood  
Auto Metal Craft, Inc.  
Autodynamics Corporation of America  
Mr. Peter N. Bakalis  
Mr. John A. Bales  
Mr. David E. Barnhart  
Mr. and Mrs. G. S. Barquist  
Barsteel  
Mr. and Mrs. Ralph W. Behler  
Mr. F. J. Beiermeister  
Mr. and Mrs. Belts  
Mr. James E. Bennethum  
Mr. Ralph V. Bergemann  
Bespro Pattern & Plastic Co.  
Beta Manufacturing Corp.  
W. George Bihler  
Ursula and Bob Binder  
Brad and Linda Birch  
Mr. Walter L. Birdwell  
Edward J. Biskup  
H. L. Blachford, Inc.  
Mr. Richard A. Bobb  
Mr. Charles E. Boesch  
Ted Bohlen  
Mr. Albert Bonucchi  
E. S. Bower  
Mr. Bliss Bowman  
Braun Engineering Co.  
Dr. S. J. Breiner  
Brenca Contractors, Inc.  
Brillcast, Inc.  
Mr. John R. Brooks  
Mr. Douglas K. Brown

Mr. James N. Brownlie  
William E. and Dorothea L. Brune  
The Buchanan Company  
Buckley Manufacturing Co.  
R. T. Bundorf  
Mr. James A. Burk  
Mr. Edmund C. Burke  
Leo Burnett Company of Michigan  
Burns Cold Forge  
Mr. Gerald S. Burr  
Byrne Plywood Co.  
Caine Steel Company of Michigan, Inc.  
California Industrial Products  
Camcar Div. of Textron  
Mr. William N. Campbell  
Cap Collet & Tool Co., Inc.  
Capitol Transportation Co., Inc.  
Capitol Trucking Inc.  
Car-Tec, Inc.  
Ruth and Allen Carpenter  
Alfred (Bob) B. Carr  
Bill J. Carroll  
Carron & Company  
Cass Strapping Corporation  
Mr. Walter J. Cattin  
Mr. Walter Cavanagh  
Centerline Tool & Die Co.  
Central Steel & Wire Company  
CertainTeed Corporation  
Mr. and Mrs. Gerald J. Chihak  
Mr. Michael P. Ciccone  
Mr. and Mrs. James R. Clancy  
Barbara and Jim Clancy  
A. C. Clark  
Classic Container Corporation  
Clearr Industries, Inc.  
Mr. Harold D. Clingsmith  
The Colber Corporation  
The Cold Heading Co./John Lee  
Colman Machining Service, Inc.  
Colony Press, Inc.  
Commercial Carriers, Inc.  
Helen and Boyd Conwell  
Mr. Fred E. Cook  
Corrigan Moving Systems  
Mr. Raymond F. Coulton  
Creative Foam Corporation  
Creative Information Services  
David Cripps  
James J. Crowe  
Currie Associates, Inc.  
D & F Corporation  
Dallas Industries, Inc.  
Dana Corporation  
Thomas F. Dansbury & Associates, Inc.  
Douglas F. Davidson  
Davis Tool & Engineering Co.  
Carlisle R. Davis  
Davison-Rite Products Company  
Dearborn Fabricating & Engineering Co.

Delbar Products, Inc.  
Lois K. and George A. Denton  
Mr. William DeRoo  
Detection Systems & Engineering Co.  
Detroit Strip Division of Cyclops Corp.  
Detroit-Pittsburgh Motor Freight, Inc.  
Mr. and Mrs. William J. Dettloff  
Digitron Packaging, Inc.  
David L. Dimick  
Darrel E. Dinger  
Bev and Frank DiPietro  
Dirksen Screw Products Co.  
Dominion Tool & Die Co., Inc.  
Don Cartage Co.  
Mr. John J. Doyle  
Mr. Donald R. Dugger  
Mr. Nelson A. Dworack  
Mr. Frank A. Dyszewski  
E & E Engineering Inc.  
Eagle-Picher Plastics Division  
C. J. Edwards Co., Inc.  
Mr. Donald G. Ehr  
Mr. and Mrs. John Eichler  
Dean Ellis  
Mr. and Mrs. John A. Ellis  
Mr. Gerald L. Elson  
Empire Steel Products  
Mr. Terry Emrick  
Mr. Edward W. Esbrook  
Mr. Dale R. Ewart  
Excelda Manufacturing Co., Inc.  
Expert-Kuka, Inc.  
FRG Industries, Inc.  
Fabricon Automotive Products  
J. F. Fanuka  
C. Robert and Sonia Fedak  
Mr. and Mrs. George G. Fenner  
Fiddler Associates Inc.  
Mr. Robert J. Finta  
Mr. Vernon F. Fishtahler  
Fitzsimons Manufacturing Co.  
Mr. and Mrs. F. J. Fleck  
Fontanesi and Kann Co.  
Forming Technology Co.  
(Formtech in PG)  
Fourslides, Inc.  
Dr. and Mrs. W. D. France, Jr.  
Freight Consolidation Services, Inc.  
Mr. Roger D. Fruechte  
GTE Products Corporation  
Dr. and Mrs. H. G. Gallasch, Jr.  
Mr. and Mrs. N. E. Gallopoulos  
Mr. Joseph Galvin  
Ms. Denise C. Garavaglia  
Gas Spring Company  
Mr. Stephen J. Gasparovich  
Susanne M. Gatchell  
Gathen Industries  
Gaylord Container  
General Tape & Supply, Inc.

*We regret the omission of those names received too late for publication.*



# CONTRIBUTIONS TO THE MEADOW BROOK MUSIC FESTIVAL AND THEATRE

## CONTRIBUTORS (Cont'd)

General Die Casting Co.  
Mr. Stanley L. Genslak  
The Gerstenslager Company  
Star and Peter Gilezan  
John W. Gillette Co.  
Gilreath Manufacturing, Inc.  
Mr. Michael M. Glusac  
Grand Trunk Western Railroad  
Mr. Donald N. Gretel  
Mr. and Mrs. Donald W. Griffin  
Otto R. Grogg  
Grossel Tool Co.  
George A. Grove  
Groves Manufacturing Company  
Mr. L. L. Grubb, Jr.  
Thomas A. Guith  
Mr. Hugh A. Guyman  
Gerry Haas  
Mr. and Mrs. Douglas J. Hall  
Donna and George Halter  
Carole and Paul Hammett  
N. Hamparian  
Mr. Robert F. Hanba  
Kenneth G. Hanson  
Mr. and Mrs. Glenn A. Harder  
John W. Harless  
Mr. John F. Harris  
Margaret E. Hartz  
Mr. and Mrs. Dale D. Haskin  
Patricia and Richard Hauser  
Mr. Ronald L. Hausmann  
Mr. Terry M. Heim  
Nadine and Jerry Henderson  
Mr. and Mrs. James P. Henry  
Michael M. Hentgen  
Hercules Welding Products Co.  
Hi-Stat Manufacturing Co., Inc.  
High Q Manufacturing  
Mr. Thomas B. Hill  
Hillsdale Tool & Mfg.  
Mr. Stanley J. Hinkle  
Hirzel-Jones Associates  
Mr. and Mrs. Edwin Hoagland  
Mr. Douglas F. Horst  
Frank Huff Associates, Inc.  
Edward W. Hufnagle, Jr.  
Mr. Peter A. Humphrey  
Mr. and Mrs. Thomas A. Hunt  
Huron Plastic Inc.  
Huron Valley Steel Corporation  
Dr. Ron R. Iacobelli  
Mr. and Mrs. Donald P. Iller  
Mr. and Mrs. Robert J. Imrick  
Larry Pelliccioni  
Inland Steel Company  
Irvin Industries Inc.  
Lorraine and Sid Jeffe  
Mr. Thomas G. Jefferson  
JO-AD Industries Inc.  
Mr. and Mrs. A. L. Johnson

Johnson Die & Engineering Co.  
Mr. and Mrs. Richard W. Judy  
Juklin Industries, Inc.  
Mr. Michael F. Juras  
K. L. A. Laboratories, Inc.  
Mr. and Mrs. Gerald E. Kahler  
Albert Kahn Associates, Inc.  
Mr. William B. Kala  
Mr. A. H. Kelly  
Richard L. Kelly  
Kenwal Products Corp.  
Mr. and Mrs. Michael W. Kerby  
Mr. and Mrs. James M. Kessler  
Susan and Robert Kessler  
Donna King  
Mr. John P. King  
Mr. William R. Kittle  
Klarich Associates, Inc.  
Mr. and Mrs. Gordon M. Kolb  
Mr. Bernard A. Konke  
Mr. Joe Kowalis  
Kripke-Tuschman Industries, Inc.  
Susan and John Kruse  
Landis Mfg. Co., Inc.  
Mr. Jack W. Landon  
John K. Lark Co.  
Mr. John G. Larson  
Judith and Charles Leahy  
Mr. and Mrs. O. K. LeBron, Jr.  
Mr. Edward S. Lechtzin  
Leckie & Associates, Inc.  
Melvin D. Lee  
Lescoa — The Leslie Metal Arts Co.  
Mr. Douglas T. Lewis  
Libbey-Owens-Ford Co.  
Lindell Drop Forge  
Mr. Peter J. Loch  
Elizabeth A. Long  
Mr. and Mrs. Anthony T. Loria  
Luria Brothers & Co., Inc.  
Mr. and Mrs. Robert Luscomb, Jr.  
James E. Lyons  
M. B. Associates, Inc.  
Machining Enterprises  
MacLean-Fogg Company  
Madias Brothers, Inc.  
Magee Carpet Co.  
Mr. Ronald A. Majeske  
Malag Tub Specialties, Inc.  
Mr. and Mrs. William Maman, Jr.  
Susan and Peter Manion  
David F. Manz  
Marathon Linen Service, Inc.  
Mr. and Mrs. Mitchell Marecki  
Burt Martens  
Martin Foundries  
C. H. Masland & Sons  
Mather Metals  
Mr. and Mrs. Mark E. Mathews  
Mr. Richard J. Matton

Paul H. McAvoy  
Mr. and Mrs. David N. McCammon  
Ian A. McEwan  
Mr. Owen M. McGough  
McGraw Electric Company of Michigan  
Masco Building Products (McIntosh Div. NI Industries)  
Mr. and Mrs. Arch McLelland  
McMullen Tool Supply Company  
Mr. F. Joseph McPartlin  
Mr. William F. McQueen  
R. D. Meek Co.  
Mr. and Mrs. D. G. McLampy  
Melling Forging Company  
Mr. J. Curtis Mellor, Jr.  
Mercury Paint Co.  
Mr. and Mrs. David F. Merriion  
Mezey-Pyroll Agency, Inc.  
Microdot, Inc.  
Mr. Robert F. Miller  
Minkin-Chandler Corp.  
Mitsubishi Heavy Industries America, Inc.  
Mitsui & Co. (U.S.A.), Inc. Detroit Office  
Douglas and Jeri Moak  
Mr. Thomas Moening  
Molmec, Inc.  
Mr. Ralph C. Morrison  
Mr. and Mrs. James S. Morrison  
Mr. John J. Morrow  
Mortell Company  
Motion Control Co.  
Robert G. Mowers  
Mubea, Inc.  
Mr. Carl O. Muhn  
Mr. R. E. Muller  
Mr. George B. Millush, Jr.  
Arthur B. Myr Industries, Inc.  
Robert L. and Zita M. Nagel  
Mr. and Mrs. Demetrois Nakis  
Narens Associates, Inc.  
National Rubber Company, Inc.  
Mr. Ronald S. Nay  
Mr. Harlan S. Neville  
C. Neumann Associates, Inc.  
Nicholson Terminal & Dock Co.  
Pat Nicosia  
Richard L. Nietert  
Ms. Marilyn P. Nix  
Mr. and Mrs. Warren S. Norrid, Jr.  
Mr. Charles A. Nyboer  
Gordon Nyquist & Associates, Inc. — Thogus Products  
Sandra and Donald O'Malley  
Mr. Kevin J. O'Reilly  
Oakland Tool & Manufacturing Co.  
Corinne K. Opiteck  
Orsco Inc.  
Mr. Stanley P. Owens  
Oxford Metal Products, Inc.  
Oxford Speaker Company

*We regret the omission of those names received too late for publication.*



# CONTRIBUTIONS TO THE MEADOW BROOK MUSIC FESTIVAL AND THEATRE

## CONTRIBUTORS (Cont'd)

Pak-Rite Industries, Inc.  
R. H. Palmer  
Mr. E. T. Pappert  
Parker Kalon Div. Emhart Corp.  
Parts & Equipment Corporation  
Mr. Joseph A. Parus  
Peak Industries, Inc.  
Peerless Industries/Div. Masco  
Peerless Quality Products  
Mr. Angelo Pellegata  
Peracchio Associates, Inc.  
Mr. Peter L. Perdue  
Perry Printing Company  
Betty Ann Peters  
Russell R. Peters Co.  
Peterson Spring — Kalamazoo Plant  
Raymond A. Pfau  
Mr. Ronald L. Phillips  
Phomat Reprographics, Inc.  
Pickomatic/High Performance Machines  
JoAnne and Larry Plant  
Plasta Fiber Industries  
Mr. Louis R. Plummer  
Plymouth Stamping Co. Div. Eltec Corp.  
Ms. Nancy E. Polis  
Mr. Irvin E. Poston  
Prestige Stamping, Inc.  
Jason and Justin Price  
Proto-Craft, Inc.  
Pulte Construction, Co., Inc.  
Quality Metalcraft, Inc.  
Mr. and Mrs. William G. Quigley, Jr.  
R. B. & W. Corporation  
Radel Leather Co.  
Hugh Rader Lumber Company  
Mr. Robert W. Ranka  
Rassini International, Inc.  
J. B. Rath Company, Inc.  
Rayl Industrial Supply Company  
Regal Prototypes, Inc.  
Mr. Robert R. Reilly  
Reiter Industries  
Mr. Charles H. Ressler  
Ray G. Rhoton  
Mr. Frederick M. Ritchie  
Riverhill Publications and Printing, Inc.  
Raymond Rizzo  
Mr. Bradley J. Rogers  
Gerald W. Ropers  
Rose Caster Company  
Mr. Richard J. Rouillard  
Mr. Laurence E. Rybacki

Ryken Tube Manufacturing, Inc.  
S & Z Tool & Die  
S. W. E. Inc.  
Mr. James E. Saylor  
Mr. and Mrs. Donald F. Scherer  
Mr. Neil A. Schilke  
Mr. Murray Schlusell  
William A. Schuetz  
Schwarb Foundry  
Seaman-Patrick Paper Company  
Mr. Charles A. Selke  
Mr. Basil Senio  
Mr. Louis C. Seno, Jr.  
Shakeproof/Div. of ITW  
Sheet Metal Industries, Inc.  
Mr. Charles D. Simmons  
Mr. Richard T. Simmons  
Mr. Michael G. Skupin  
James C. Smidebush  
R. M. Smith  
Mr. and Mrs. Fraser D. Smithson  
Harry J. Snytko  
Mr. James A. Sorensen  
Mr. Robert O. Sornson  
Ms. Mona Spezzano  
Spicer Tool Co.  
Mr. Edward T. Sprock  
Kathleen M. Stapleton  
Barbara and Steve Stefanovich  
Mr. Gerald S. Steinberg  
Mr. Roger P. Sterling  
Sterling Oil & Chemical  
Mr. Louis Strebel  
Judith Ann Salhaney  
Mr. and Mrs. Paul T. Sullivan  
Supreme Haulers, Inc.  
Warren Swan  
Mr. David W. Swietlik  
C. H. Symington & Co., Inc.  
Mr. Thomas J. Tallerico  
Mr. Joseph C. Tatham  
Steve and Trudy Taylor  
Teal Electric Company  
Tecumseh Metal Products Inc.  
Teleflex Incorporated  
Mr. Patrick W. Telesco  
Jean A. Tennant  
Thiem Corporation  
Townsend Division of Tectron, Inc.  
Transportation Service, Inc.  
Mr. Ronald B. Travis

Mr. and Mrs. David C. Travis  
Trident Automotive Products, Inc.  
Neil H. Triner  
Joyce and Louis Tubben  
Mr. William J. Turner  
Tweddle Litho Co.  
U. S. Truck Company, Inc.  
Usinor Steel Corporation  
Mr. Ernest O. Vahala  
Mr. John B. Vail  
Mr. Robert A. Valentine  
Valeo Automotive, Inc.  
Valiant Machine & Tool, Inc.  
Peter Van Cott  
Van Wormer Industries, Inc.  
Mr. and Mrs. J. J. Van Giesen  
Mr. Donald K. Van Zile  
Mr. Jay Van Zoeren  
Phyllis and Michael Viola  
Visioneering, Inc.  
Mr. Richard S. Wagerson  
Warren Division USM  
Mr. James T. Watson  
Mr. Michael J. Wattai  
Jervis B. Webb Company  
Sergio Wechsler  
Mr. Lawrence A. Weis  
Mr. and Mrs. Martin E. Welch III  
Welding Metals, Inc.  
Wellington Manufacturing, Inc.  
Westvaco Corporation  
Weyerhouser Company  
Mr. Charles R. White  
Mr. and Mrs. Glenn E. White  
Mr. Gene P. Whitlinger  
Marina and Robert Whitman  
Widger Chemical Corp.  
Barbara and Robert Widmer  
Mr. and Mrs. J. H. Wilberding  
Wilhelm Engineering Company  
Ginny and Paul Williams  
Mr. and Mrs. J. Michael Williams  
Mr. Howard K. Witzke  
Susan and O'Neil Woelke  
Mr. and Mrs. Conrad R. Wojciechowski  
The Wolf Detroit Envelope Co.  
Mr. Michael R. Wood  
Mr. and Mrs. Leo E. Wymer  
X-Cel Industries  
Mr. Anton H. Zidansek  
Frederick W. Zuckerman

*We regret the omission of those names received too late for publication.*



# Friends of the Meadow Brook Music Festival

## Opus

Mary Lou & Richard Janes  
Mr. & Mrs. Milton J. Miller  
Mr. & Mrs. L. D. Taylor

## Sound Supporter

Mr. & Mrs. Jack Bean  
The Jacob & Rachel Kellman Foundation  
Mrs. Leonard T. Lewis  
Mr. & Mrs. S. M. Nivy  
Frank B. Pardo

## Benefactor

Mr. & Mrs. William N. Anderson  
Dr. & Mrs. Ralph E. Bauer  
Carl & Jean Bihlmeyer  
Richard & Susan Bingham  
Penny & Harold Blumenstein  
Mr. & Mrs. Lawrence B. Boensch  
William & Carol Brink  
Mr. & Mrs. Robert Burland  
Evelyn & Lester Burton  
John J. & Frances Casey  
Sy & Nancy Cohen  
Mr. & Mrs. Robert T. Collins  
Mr. & Mrs. Charles L. Collinson  
Cooper and Associates Physical Therapy  
Mr. & Mrs. Rodkey Craighead  
James N. Crutchfield  
Mrs. Saul H. Dunitz  
Edrich Products, Inc.  
Murray & Alice Ehrinpreis  
Mr. & Mrs. Francis C. Fleck  
Richard & Marilyn Fowler  
Barbara S. Gaves  
Dr. Myron Ginsberg  
Jules Goldman  
Mr. & Mrs. A. P. Googasian  
Richard G. Hayes  
Frederick G. L. Huetwell  
Hydra-Zorb Company  
ITT Automotive, Inc.  
Mr. & Mrs. Donald L. Jacques  
Jeffrey M. Jepko  
Mr. & Mrs. James A. Johnston  
Ken Kowalski  
Lattimore & Tessmer, Inc.  
Mr. & Mrs. Michael A. Leonard  
Mr. & Mrs. Seymour J. Levine  
Mr. & Mrs. David Lewis  
Mr. & Mrs. Carlton Lindell  
Joan & Doug Mann  
William M. Martin  
Penfield Mower  
Douglas Alden Peterson  
Dr. & Mrs. L. J. Peterson  
Mr. & Mrs. Robert L. Plaunt  
Mr. & Mrs. Robert L. Pobur  
Dorinne Redmon  
Lyle Rice  
S. Dennis & Leslie Rogers  
Sherry & Al Russman  
Stuart Sakwa  
R. J. Sawicki  
Allan B. Schmier  
Ernest J. Schwartz  
Mr. & Mrs. Kenneth N. Scott  
Ruth & Nat Share  
Donald E. Shely  
Herbert Sott  
David G. Stevens  
Dr. & Mrs. Donald E. Stroud  
James H. Tartar  
Robert L. Udebrock  
Peter L. Wanger  
Shirley & Howard Warye  
H. N. Weinert  
Patrick R. Willis, CPA  
David P. Wood

## Patron

Mr. & Mrs. Charles J. Allen  
Mrs. Eugene J. Arnfeld  
Bud Ault  
Russell & Sandra Ayers  
Mr. & Mrs. R. Baber, Jr.  
Ernest & Gloria Beren  
John E. Bloom  
William R. Boike  
Georgie & Jim Busher  
James W. Cahill  
Charles H. Clark  
Dr. & Mrs. James M. Colville  
Dr. & Mrs. David E. Congdon  
Mr. & Mrs. Louis J. Curtis  
Mr. & Mrs. Jared W. Finney  
Annette R. Giasson  
Geoffrey & Alice Gottlieb  
Mr. & Mrs. Arthur R. Grix  
Mr. & Mrs. K. P. Haller  
James & Joyce Hamburg  
Leland & Irene Helms  
Robert L. Herstein  
Tom & Myrna Hitchman  
Lauren G. Itami  
Joel Ittigson  
Graham & Pat Jackson  
John F. Jovanovich, M.D.  
Dr. & Mrs. Stuart Katz  
Marvin L. Kornhauser  
Mr. & Mrs. Robert E. Lazzarin, Jr.  
Elizabeth A. Long  
J. Mandrup-Poulsen  
Jan McCall  
Mr. Paul E. Milgrim  
John I. Morrison  
James A. Mulrenin  
Sally & Harry Nosanchuk  
Mr. & Mrs. Wilbur Ott  
Owen Z. Perlman, M.D.  
Mr. & Mrs. Ted T. Phillips  
Mr. & Mrs. Bernard Robertson  
Richard & Doris Roeder  
Gordon F. Rogerson  
Mr. & Mrs. Herman Rosenbusch  
Dr. & Mrs. Mark F. Rottenberg  
Mr. & Mrs. John A. Schmidt  
Dr. Ronald & Ellen Schmier  
Herman Schornstein, M.D.  
Mr. & Mrs. Donald E. Schwendemann  
Dorothy & Robert Selik  
Mr. & Mrs. Lynn Troxel  
Tuesday Musicales of Detroit  
David & Hazel Wilcox  
Susanne L. Williams  
Monte R. Wilson  
Edward Woloszyk

## Friends

Dr. & Mrs. William C. Albert  
Terrence S. Althouse  
Margaret Amberg  
Martin Amberg  
N. Arlene Andersen  
Helen A. Andrews  
Anthony & Marian Argento  
Mrs. Simon S. Baer  
Mr. & Mrs. John E. Barnes, Jr.  
Ann J. Barth  
Donald G. Beattie  
Mr. & Mrs. A. D. Blatnikoff  
Ruth E. Bliefield  
Nadia Boreiko  
Mr. & Mrs. William C. Brimmer  
Frederick & Grace Brufloft  
Arthur W. Bryant  
Mr. & Mrs. Arthur G. Burgott  
Clarence & Grace Carothers  
Miriam Ciesla  
Irene H. Collins  
Ken Collinson  
Mr. & Mrs. Wayne D. Conner II  
George T. Cori  
Virginia & Val Corradi  
Ralph & Carol Coskey  
Ernestine Cox  
Mrs. Ronald Cruickshank  
Mr. & Mrs. Robert L. Crump  
David & Jimmie Sue Daniels  
Mr. Jan N. Darga  
Bonnie A. Dayton  
Paul & Ellen Dennis  
Paul & Elva Dietrich  
Mr. & Mrs. Charles F. Dohring  
Mr. & Mrs. Stewart Edgerton  
Mr. & Mrs. Jerry Efros  
Mr. & Mrs. Bennett Engelman  
Dr. & Mrs. Riad Farah  
Mr. & Mrs. Philip J. Farese  
Oscar & Barbara Feldman  
David A. Finn  
Rosamond S. Fisher  
Dr. Mark E. Frenchi  
Maureen T. Given  
Kenneth H. & Betsy B. Gold  
G. E. Gormly  
Dr. & Mrs. John N. Grekin  
Thomas & Jean Griffith  
Hanley & Julie Gurwin  
Betty J. Haase  
Dr. & Mrs. Berj H. & Alice B. Haidostian  
Dr. & Mrs. Bernard J. Harris  
Bruce & Sharon Hoilman  
Marilyn & William Hopping  
John Humphries  
Janet Joyce  
R. M. Justin  
Mr. & Mrs. T. M. Canary  
Norb & Carole Keller  
Earl Kendler  
Cheryl & Joe Kennedy  
Barbara L. Keys  
Karen A. King  
Mr. & Mrs. Daniel J. Kingsbury  
Stephanie Kown  
Dr. & Mrs. Jerome W. Krause  
Dr. & Mrs. M. J. Kukler  
Ms. Dorothy Kurrie  
Mr. Marvin J. Lawrence  
Calvin S. Lazar  
Bernhard Lichtenstein  
Ann & Hank Lorish  
Dave Loweke  
Mr. & Mrs. Jack E. Lyons  
Margaret E. McCarthy  
Julius S. Megyesi  
Dr. & Mrs. D. B. Meltzer  
Dr. Herbert & Susan Miller  
Leonard & Shirley Miller  
Mr. & Mrs. Thomas F. Neu  
Charles R. Neuberger  
S. Sidney Newhouse  
Walter D. Nitz  
May Nosanchuk  
Saul Nosanchuk  
Andrew & Catherine OGawa  
Ralph A. Orlandi  
Mr. & Mrs. W. A. Pagen  
Mr. & Mrs. Lawrence Palka  
Charles & Elaine Perlman  
Mrs. Ruth K. Pierce  
Sylvia J. Pollak  
John & D'Anna Potter  
Peggy Rastenis  
George Rendziperis  
Mr. & Mrs. Robert S. Rosenfeld  
Mr. & Mrs. Lawrence Rosenthal  
Dr. Felix F. Rosenwach  
Mr. & Mrs. Gerald Ross  
Dr. & Mrs. Walter S. Rothwell  
Mr. & Mrs. Herbert Royal  
Mr. & Mrs. Clifford Sadler  
Mary L. Sanderson  
Mr. & Mrs. Robert Saroli  
Leslie Schey  
Stan & Dorothy Seger  
Don Serafin  
Dan C. Shoff  
Linda C. Sickles  
Dr. & Mrs. Sheldon N. Siegel  
Joan M. Sigmann, M.D.  
Mr. & Mrs. Fredrick Simon  
Murray & Arlene Sobolov  
Earl R. Socal  
Vivian Stamoran  
Jim & Mary Stevenson  
Mr. & Mrs. F. S. Strong, IV  
William Suminski  
Mr. & Mrs. C. R. Sutherland  
Robert & Mary Margaret Sweeten  
Christopher Szefi  
Elliott Trumbull  
Nicholas & Suzanne Trush  
Mr. & Mrs. Philip D. Vincenzetti  
Mary F. Von Koss  
Hugo Wahl  
Malca & Norman Wechsler  
Mr. & Mrs. Leonard H. Weiner  
Dr. Milford & Barbara Wenokur  
Raymond E. Winn  
Paula Zondlak

*We regret the omission of those names received too late for publication.*



# 1987 INDEX TO ADVERTISERS

Twenty-fourth Annual Edition of the Meadow Brook Music Festival Program

Advertiser Name	Page Number
Adistra Corporation	154
Allied Automotive/Executive Offices	64
Allied Metals Corporation	123
Alma Products Company	112
American Motors Corporation	14 & 15
American Sunroof	68
Architectural Digest	106
Autobahn Motors, Inc.	84
N. W. Ayer, Inc.	157
Azar's Gallery of Oriental Rugs	86
Baggit, Inc.	123
Batten, Barton, Durstine & Osborn	100
Best Carpets & Area Rugs	1
Birmingham Chrysler Plymouth	152
Birmingham Motors Ltd.	92
Bloomfield Beach and Boat	124
Borg-Warner Corporation	86
Bozell, Jacobs, Kenyon & Eckhardt	69
The Budd Company	12
Leo Burnett Company	82
Calico Corners, Inc.	39
Car and Driver Magazine	51
Chamber Music Society	132
Christian Science Monitor	88
Chrysler Corporation, Corporate	155
Chrysler Corporation, LeBaron	34
Chrysler Corporation, Voyager	158
Clarkston Cafe	118
Clutter Control	118
D'Arcy-Masius Benton & Bowles	28
Dana Corporation	87
Detroit Free Press	70
Detroit Science Center	127
Detroit Monthly	27
Douglas & Lomason Company	80
Douglas Cleaners	104
Dura Corporation	124
Eaton Corporation	118
Eaton Nursery Ltd.	160
Erhard BMW	116
Executive Custom Shirtmakers	86
Fishman Group	104
Florist's Transworld Delivery Assn.	94
Ford Motor Co., Parts & Service Div.	73
Ford Motor Co./Ford Corporate	125
Ford Motor Co./Ford-New Holland	58
Ford Motor Co./Lincoln-Mercury Div.	inside back cover
Ford Motor Co./Ford Division	inside front cover
Fortune	149

Advertiser Name	Page Number
Gail & Rice Productions	98
GenCorp	145
GM — AC Delco Division	56
GM — Buick Division	147
GM — Cadillac Motor Car Div.	40 & 41
GM — Chevrolet Division	back cover
GM — General Motors Parts Div.	131
GM — General Motors Acceptance Corp.	8
GM — General Motors Corporate	37
GM — Oldsmobile Division	139
GM — Pontiac Motor Division	3
Golden Pond	104
Goodyear Tire & Rubber Company	153
Greenstone's	82
Guest Quarters	68
P. R. Haig Jewelers Inc.	124
Hammell Music	109
The Handleman Company	156
Harper-Grace Hospital	130
Hilberry Repertory Theatre	124
Huttenlocher Kerns Norvell Inc.	152
E.F. Hutton & Co., Inc.	118
Indian Head Corporation	21
ITT Higbie Manufacturing Company	126
Jacobsen's Flowers, Inc.	151
Jacobson's Stores, Inc.	104
Jeff Fontana Designs Inc.	128
Jones Floor Covering	127
Kelsey-Hayes Company	7
Kingsley Inn	80
P. Terry Knight & Associates	154
Kowalski Sausage	154
Lamb Technicon Corp.	42
Fred Lavery Porsche Audi Co.—Range Rover	74
Fred Lavery Porsche Audi Co.	128
Lectron Products, Inc.	122
Liberty State Bank	92
M & G Market Services, Inc.	117
Maccabees Mutual Life Insurance Co.	13
Manufacturer's Bank of Detroit	80
Marty's Cookie Co. & Bakery	84
Matsel's Galleries	116
McCann-Erickson, Inc.	75
Michigan National Corporation	110
Michigan Design Center	128
John Mitchell Interiors	152
MSU Federal Credit Union	116
Jim Muir Oldsmobile—GMC Truck	123
Newsweek, Inc.	61
Nimbus Records	75

Advertiser Name	Page Number
Norman's Eaton Street Station	110
Northfield Hilton	154
Oceania Inn	98
OU — Div. of Continuing Ed	68
OU — Meadow Brook Hall	103
OU — Meadow Brook Art Gallery	98
OU — Office of the President	47, 55, 63
OU — President's Club (OU Foundation)	97
Panache	151
People Magazine	67
Prudential Town Center	9
Reader's Digest	54
Reilly & Sands, Ltd.	132
Robertson Brothers Company	142
Rockwell International	33
Ross Roy, Inc.	50
Russell Hardware	128
Scallops of Rochester	2
Schmid Haus & Company	132
Jules R. Schubot Jewellers	134
Sheller-Globe Corporation	92
Somerset Mall	16
Speedy Tees Inc.	127
Sports Illustrated	4
St. Joseph Mercy Hospital	91
Stalker Gallery, Inc.	127
Stewart Fabrics, Inc.	110
The Stroh Brewery Company	85
Taubman Company	44
J. Walter Thompson USA	79
Time Incorporated	48
TRW Automotive Worldwide	133
TV Guide	111
U. S. News & World Report	129
UAW Region 1 B.	119
Uniroyal Goodrich Company	150
Unisys Corporation	62
United Technologies	105
University Musical Society	99
Volkswagen of America, Inc.	49
David Wachler and Sons	123
Jervis B. Webb Company	57
Weiss Fran (Antiques)	110
Wells, Rich, Greene/Detroit, Inc.	93
Wesch Cleaners, Inc.	60
White Chapel Cemetery	76
Wild Wings Gallery	86
WJR	137
Sara Wolk Associates	151
WQRS	81