

Archives
ML
38
.O2
M47
2000

SUMMER

2000

SUMMER

2000

SUMMER

2000

SUMMER

2000

SUMMER

2000



table of CONTENTS

Palace Sports & Entertainment Welcome	2
Oakland University President's Welcome	5
Oakland University Board of Trustees and Officers and Deans of the University.	6
Oakland University Foundation Board of Directors and Ex-Officio Directors.	8
Meadow Brook Music Festival 2000 Fact Sheet & Facility Map	12
Meadow Brook Performer Biographies.	16-26, 32-38, 44-46, 52-54, 60-64, 68
Oakland University 2000: Preparing Students for the 21st-Century Workplace and Society	30-31
Meadow Brook Theatre: Oakland University's Professional Theatre Company 2000 - 2001 Season	42-43
Meadow Brook Music Festival Historical Timeline	48
Meadow Brook Theatre Outreach — Programs to Serve Our Diverse Community	56
Meadow Brook Music Festival Box Office Fact Sheet & Concessions Fact Sheet	58
Meadow Brook Music Festival List of Firsts	66
Meadow Brook Music Festival 2000 Schedule	70

PUBLISHER	<i>Palace Sports & Entertainment</i>
PRESIDENT & CEO	<i>Tom Wilson</i>
OAKLAND UNIVERSITY AUXILIARY SERVICES	<i>Peggy Cooke</i>
DIRECTOR OF PRINTING & GRAPHICS	<i>Maria Walter</i>
PRINTING & GRAPHICS PRODUCTION MANAGER	<i>Mark Dennis</i>
MARKETING COORDINATOR	<i>Amy Bryson</i>
GRAPHIC DESIGNER	<i>Amy Irene Michener</i>
OAKLAND UNIVERSITY CONTRIBUTING WRITERS	<i>Ryan Poquette Jennifer Charney</i>
OAKLAND UNIVERSITY PHOTOGRAPHY	<i>Dennis L. Collins</i>
MEADOW BROOK THEATRE ILLUSTRATOR	<i>Chet Johnson</i>
PROOFREADER	<i>Cliff Puckett</i>
PRINTER	<i>Pendell Printing</i>

Archives
ML
38
02
1147
2000

NON-CIRCULATING

OAKLAND UNIVERSITY
KRESGE LIBRARY

ROCHESTER, MI 48309-4484



A message from the **PRESIDENT OF OAKLAND UNIVERSITY**

Welcome to Oakland University's Meadow Brook Music Festival, a favorite summertime venue for world-class entertainment in southeastern Michigan. We're glad to have you on campus.

I invite you to get to know Oakland University and its many cultural offerings, including

- award-winning plays at the professional Meadow Brook Theatre and through OU's Department of Music, Theatre and Dance;
- the Eisenhower Dance Ensemble, Oakland's professional dance company, which received a favorable review from The New York Times;
- the magnificent Meadow Brook Hall, a 100-room, Tudor-revival mansion listed in the National Register of Historic Places;
- and Meadow Brook Art Gallery, which plays host to many distinguished collections.

Oakland is on its way to becoming the model university for the new century - and the word is getting out. *U.S. News and World Report* in the 1999/2000 edition of its guide, *America's Best Colleges*, ranked OU among the top 10 regional public universities in the Midwest. And, Oakland's campus continues to keep pace with enrollment growth. This fall, the university will open the \$17.5-million Business and Information Technology Building, featuring leading-edge computer training labs, video conferencing areas, interactive media viewing rooms, distance learning technology, a multimedia production center and a 100-seat multimedia auditorium.

On the athletic front, five of Oakland's Golden Grizzlies athletic teams claimed Mid-Continent Conference titles during their first year of NCAA Division I competition - an outstanding accomplishment.

The future couldn't be brighter for Oakland University as we look ahead to continued student and campus growth, academic program enhancements, technology advancements and new partnerships with industry. We invite you to grow with us.

Sincerely,

A handwritten signature in dark ink, reading "Gary D. Russi". The signature is fluid and cursive, with the first name "Gary" being more prominent.

Gary D. Russi, President
Oakland University



Meadow Brook Music Festival

2000 SEASON FACT SHEET & FACILITY MAP

CAPACITY

7,701 total. (2,819 pavilion, 4,882 lawn seats.)

OPERATIONAL SEASON

May to September.

NUMBER OF EVENTS

40 - 50 events are expected.

RESTROOMS

Men's and women's restrooms are located at Wild Flower Café & Bar and on the south (stage right) side of the hill.

PARKING ENTRANCES

Five cashier lanes, two entrances, two exits. *Entrance/Exit off Walton Blvd, Entrance/Exit off Adams Rd.

PARKING

2,000 spaces. Handicapped patrons will be directed by parking staff to handicapped parking spaces upon entry to Festival lot via entrance from Walton Blvd.

PATRON ENTRANCES

Seven entry points. *Main Entrance—6, South Entrance—1.

GUEST SERVICES/GUEST RELATIONS

Located at the Main Entrance box office.

FIRST AID

Located at the Wild Flower Café & Bar (between restrooms), open during all events.

PRODUCTION

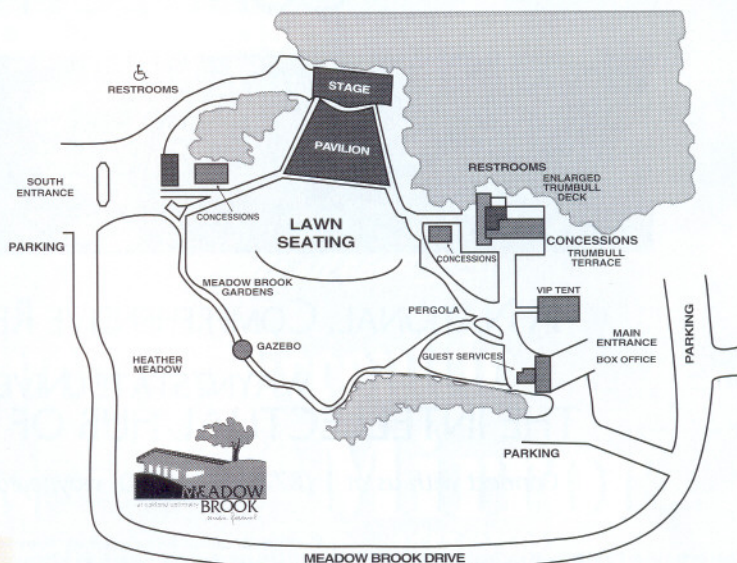
Mixing console located at the rear of the pavilion, approximately 120 feet from the stage. *Acoustical upgrades. *Updated lawn speaker system.

LANDSCAPING

Festival's garden areas to be maintained by Palace Sports and Entertainment's Physical Plant in cooperation with sponsoring area garden and landscape firms. *Water feature adjacent to Note Worthy Treasures & Treats building on stage left base of hill.

CONCESSIONS

Volume Services America. *Approximately 40 point of service throughout grounds.



OAKLAND UNIVERSITY 2000

Preparing Students for the 21st-Century Workplace and Society

The largest degree-granting institution in Oakland County, Oakland University is easily accessible to millions of metropolitan Detroit area residents. The natural beauty of the campus is enhanced by recreational facilities and buildings that house the university's many academic and public service programs.

Through the leadership of President Gary Russi, Oakland students are acquiring the skills they need to succeed in a complex and rapidly changing workplace.

Oakland is experiencing its fifth consecutive year of enrollment growth and continues to add market-driven degree programs geared to real-world needs. During the past few years, Oakland introduced more than 25 new degree programs and specializations in response to market demands.

Of Oakland's full-time faculty, 90 percent have earned Ph.D.s from many of the nation's finest research institutions. Less than one percent of classes are taught by graduate students, and OU has small classes that average fewer than 35 students for undergraduate courses. Additionally, students at Oakland have the unique opportunity to conduct research at the undergraduate level.

Quality of academics continues to be recognized - OU is rated a top ten regional public university in the Midwest by *U.S. News and World Report* in the 1999/2000 edition of its guide, *America's Best Colleges*.

RECENT INITIATIVES AT OAKLAND UNIVERSITY

- 300 corporate and civic leaders joined faculty, staff and students on nine Creating the Future task forces to plan and evaluate OU's academic and administrative programs.
- The Howard Hughes Medical Institute awarded OU's undergraduate education program in biological sciences with a four-year, \$600,000 grant.
- Several new buildings have come on-line in the last two years, including a \$43-million Science and Engineering Building, a \$1.8-million facility for the School of Health Sciences, a \$37-million Recreation and Athletics Center and a new Honors College. A \$17.5-million, 40,000-square-foot Business and Information Technology Building will open in Fall 2000, and in January 2000, Governor Engler approved funding for a new building for the School of Education and Human Services.
- Oakland's Product Development and Manufacturing (PDM) Center provides world-class education, research and technology application in all areas of automotive production. In September 1999, the PDM received \$5 million in grants from the Department of Defense and the automotive industry to design electrical systems for military and commercial vehicles.
- The School of Business Administration's Applied Technology in Business (ATiB) program meets the high demand for information technology professionals by combining a rigorous education in business administration with

hands-on training in information technology. OU students enrolled in ATiB are solving complex business problems for 30 partner companies in all areas of information technology, and often receive job offers before they graduate.

- OU's athletics program joined the Division I Mid-Continent Conference and named the Golden Grizzlies as their new mascot.
- OU is administering a \$1.5-million GEAR UP (Gaining Early Awareness and Readiness for Undergraduate Programs) grant from the U.S. Department of Education in partnership with the school district of the City of Pontiac, Oakland Community College, the State of Michigan Department of Education and Pontiac schools' Community Collaborative.

The university has major institutes and centers in eye research, wellness, biochemistry technology and international studies. Oakland's Center for Biomedical Research fosters collaborative research and education, enhancing Oakland's ability to recruit and retain outstanding biomedical scientists.

Oakland's internationally renowned Eye Research Institute is the only major eye research center in the United States not associated with a medical school. Supported by the National Institute of Health, the center earned \$1.9 million in external funds during 1998/99.

The Medical Laboratory Sciences program in Oakland's School of Health Sciences is the only program in the state to offer students the options of cytotechnology, histotechnology, medical technology and nuclear medicine technology. A radiation therapy option is offered as well.

OU's cultural enterprises attract more than 500,000 visitors each year to its beautiful 1,441-acre campus. Patrons of art, theatre, music and historic preservation recognize Oakland's Meadow Brook Art Gallery, Theatre, Music Festival and Hall as second to none.

The university demonstrated its ongoing commitment to on-campus diversity through the eighth annual Oakland University Keeper of the Dream Awards banquet. This event recognized student efforts to break down cultural stereotypes and promote interracial understanding and provided scholarships to award recipients.

Dedicated to preparing students for the new century's workplace and society, the university is organized into the College of Arts and Sciences and the schools of Business Administration, Education and Human Services, Engineering and Computer Science, Health Sciences, and Nursing. Oakland offers 109 bachelor's degree programs and 63 graduate degree and certificate programs.

The university also has an active interdisciplinary Honors College. Continuing Education programs meet the needs of business, industry, governmental units, schools and other community organizations.

For more information about classes and degree programs, call the Office of Admissions at (248) 370-3360. For events information, call the Center for Student Activities and Leadership Development at (248) 370-2400.



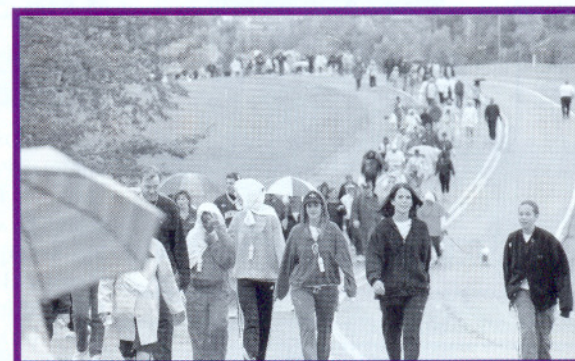
OAKLAND'S NEW \$17-MILLION BUSINESS AND INFORMATION TECHNOLOGY INSTITUTE WILL OPEN IN FALL 2000.



STUDENTS IN THE APPLIED TECHNOLOGY IN BUSINESS PROGRAM PROVIDE BUSINESS SOLUTIONS THROUGH INFORMATION TECHNOLOGY FOR PARTNERING ORGANIZATIONS.



LOYAL FANS CHEERED ON OU'S GOLDEN GRIZZLIES IN THEIR FIRST OFFICIAL YEAR OF NCAA DIVISION I COMPETITION. FIVE OAKLAND TEAMS CLAIMED MID-CONTINENT CONFERENCE TITLES.



OAKLAND HOSTED THE 1999 METRO DETROIT HEART WALK, WHICH BROUGHT 12,000 WALKERS TO CAMPUS AND RAISED CLOSE TO \$1 MILLION TO FIGHT HEART DISEASE AND STROKE.

SUMMER

EAD
BR

2000

SUMMER

MUSIC
FESTIVAL

2000



Meadow Brook Music Festival

HISTORICAL FACTS

- 1957** 1,400 acres of property originally owned by auto pioneer John E. Dodge is donated to Michigan State University-Oakland (Oakland University's name at the time) by his widow Matilda Dodge Wilson, retaining only a small plot of property for herself and her new husband, Alfred Wilson. The festival is named in honor of her former estate.
- 1963** Founding chairperson of Oakland University's department of music, Dr. Walter S. Collins poses the idea of a summer music festival to bring the public to see the school's beautiful campus.
- 1964** On February 29, ground is broken for the new Festival, built to be the summer home for the Detroit Symphony Orchestra. Designed by O'Dell, Hewlett, Luckenbach Associates of Birmingham and built by the J.A. Fredman Company of Pontiac, with money donated from the Kresge Foundation, the pavilion is completed in time for the Festival's opening on July 23. The Howard C. Baldwin Memorial Pavilion took advantage of the Rochester Board of Education's generous loan of 2,000 folding chairs to seat its patrons for its early shows.
- 1965** Trumbull Terrace concessions area opens. The facility was donated by Mr. and Mrs. George T. Trumbull.
- 1967** A permanent box office is built, replacing a make-shift plywood lean-to which had been functional only during evening concert hours.
- 1988** Treble Clef Gift Shop opens. It is operated by the Festival's Women's Committee.
- 1994** Palace Sports & Entertainment (PS&E) takes over event booking, marketing, group sales, parking, security and maintenance.
- 1997** PS&E signs long-term operational and management agreement with Oakland University. Baldwin Pavilion is expanded to create 591 additional seats. New electronic marquee added at the corner of Walton Boulevard and Adams Road. New concessions building, located stage right, is constructed. Treble Clef is transformed into a concessions food and beverage area.
- 1998** Exteriors of existing buildings are completely renovated. Colorful new signage package added to main entrance and throughout grounds.



- FITNESS CENTER
- OUTDOOR POOL
- WALL STREET RESTAURANT AND LOUNGE

**TREAT YOURSELF TO ONE OF OUR
EXECUTIVE GUEST ROOMS OR
WHIRLPOOL SUITES THURSDAY
THROUGH SUNDAY, AND YOUR
BREAKFAST IS ON US!***

2537 ROCHESTER RD. TROY, MI 48083
CALL TODAY! (248) 689-7500

WE ARE CONVENIENTLY LOCATED AT I-75 AND ROCHESTER RD. (EXIT 67)
ONLY MINUTES AWAY FROM THE EXCLUSIVE SHOPS AT THE SOMERSET
COLLECTION AND OAKLAND MALL.

* Free breakfast buffet for two with one night stay. Based on availability. You must mention code "MDW" when making your reservation. Valid on Thursday, Friday, Saturday or Sunday. Professionally managed by Trans Inns Management.

MEADOW BROOK THEATRE OUTREACH

Programs To Serve Our Diverse Community

For 34 years Meadow Brook Theatre, Oakland University's Professional Theatre Company, has provided award-winning entertainment to the Detroit Metropolitan area. The theatre has developed a wide range of educational programs for the community, many of which are geared for children. The following is an overview of these low-cost and frequently no-cost programs.

MEADOW BROOK PERFORMING ARTS COMPANY ON TOUR

(Available for in-school productions throughout the state)

"Tales by Twain"

Mark Twain: steamboat pilot, prospector, miner, journeyman printer, but most importantly humorist, writer and lecturer. Noted for his dry wit and scathing commentary, his stories have become an important part of our literary heritage. The spring 2001 tour (touring February-April) will celebrate the writings of Mark Twain with adaptations of his short stories.

THE MBT SUBTEXT

These study guides are available for each Meadow Brook Theatre production with information about the plays and writers. These guides are designed to enhance the theatre-going experience and develop dramatic awareness.

HIGH SCHOOL APPRENTICE PROGRAM

This is an advanced theatrical program for students seriously pursuing higher education studies in the performing arts.

SHADOWING AND MENTORING FOR STUDENTS

This program gives students firsthand experience of what it takes to be a theatre artist. Students are able to attend technical and dress rehearsals, and develop an understanding of the theatre craft that most interests them.

INTERNSHIPS

Interns have a chance to achieve a deeper understanding of what it means to work at a major regional theatre over an extended period. They also gain important, firsthand experience from working directly with directors and administrators, as well as other staff, in running the day-to-day affairs of the theatre.

PRESHOW LECTURES, POSTSHOW TALK-BACKS AND THE LIBRARY LECTURE PROGRAM

The plays produced by Meadow Brook Theatre are set in context during these talks, while audience members are encouraged to ask questions and discuss the plays that they are about to see, or have just watched.

PLAYWRIGHT'S CENTER

A program of mentoring and classes has been developed to stimulate local writers and encourage them to produce new work. This mentoring program involves adults as well as students in the Detroit Metropolitan area. Members of the Center receive a newsletter and are eligible for reduced rates for activities.

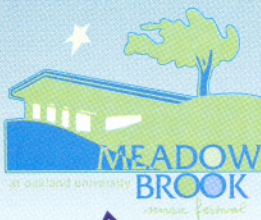
FROM PAGE TO STAGE

This program is a unique partnership between Oakland Schools and The Chrysler Fund to enhance the oral and written skills of students. Professional theatre writers and directors guide and instruct students according to a specially devised lesson plan over a four-week period. Following this, students, many of whom had never written dialogue before, script four complete scenes.

CLASS ACTS

Theatrical professionals visit classrooms to assist the teachers in enlivening literature and developing the creative potential of students. Various workshops are available and can be tailored to the needs of the schools.

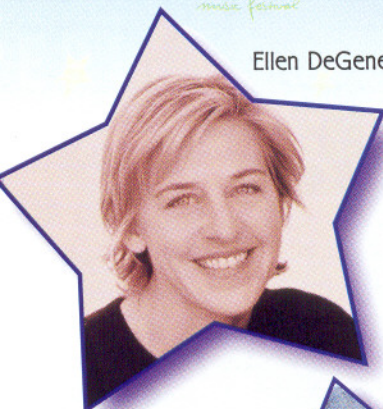
For more information on any of the above programs, contact the Meadow Brook Theatre Education Director at: phone (248) 370-3102, fax (248) 370-3108 or e-mail: mbrkthea@oakland.edu. Visit the Meadow Brook Theatre web page at www.mbttheatre.com.



SUMMER 2000



Ellen DeGeneres



Weird Al Yankovic



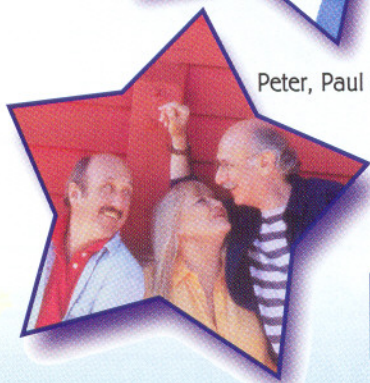
Martina McBride



Rick Springfield



Peter, Paul & Mary



MAY

- 23** Meadow Brook Music Festival & Pine Knob Music Theatre Opening Act Contest Finals
Watch tomorrow's stars compete for the chance to perform at an event this summer!
- 25** Tricia Yearwood w/Jessica Andrews
- 27** André Rieu & The Johann Strauss Orchestra

JUNE

- 3** Ellen DeGeneres
- 21** Franklin the Turtle & The Magic Fiddle w/Joanie Bartels
2 Shows • 11am & 7pm
- 23** Pure Prairie League/Poco
- 24** Steven Wright
- 25** The Chieftains/Los Lobos
- 26** Michigan Professional Firefighters Union Presents B.J. Thomas w/Billy Joe Royal
Tickets on sale June 12
- 30** Weird Al Yankovic

JULY

- 1** Martina McBride
- 2** Get Back!
The Cast of Beatlemania
- 3** Todd Rundgren w/ Leon Russell
- 12** Maurice Sendak's Little Bear w/ Eric Nagler
2 Shows • 11am & 7pm
- 13** Natalie Merchant
- 18** "Grease" Featuring Cindy Williams
- 19** & Eddie Mekka - "Carmine"
From Laverne & Shirley
- 26** Scholastic's The Magic School Bus...Live!
w/Norman Foote
2 Shows • 11am & 7pm

AUGUST

- 10** John Berry/Suzy Bogguss/Billy Dean
- 12** Rick Springfield
- 13** Peter Paul & Mary
40th Anniversary
Kids 12 & Under FREE on the lawn
- 24** Wimzie's House
w/Linda Arnold
2 Shows • 11am & 7pm

- 25** Trinity Irish Dance Company
- 26**
- 27** Terri Clark

SEPTEMBER

- 1** Lonestar

HUDSON'S
presents
DETROIT SYMPHONY ORCHESTRA
Neeme Järvi, Music Director
15 PERFORMANCES
Family Fun Fridays
Sensational Saturday Classics
Sunday Summer Pops
July 7-9 • July 14-16 • July 21-23
July 28-30 • Aug. 4-6
For information call (313) 576-5111
 Huntington
Banking. Investments. Insurance.

PROUD SPONSORS

FRANK'S
More Beautiful Things Begin

Standard Federal

LINCOLN
AMERICAN LUXURY

ST. JOSEPH MERCY OAKLAND

RE/MAX

verizon wireless

Delta

ON SALE NOW

The Palace Box Office and all **ticketmaster**. Charge (248) 645-6666.
Group discounts available on select shows, call (248) 377-0100 for info. More Shows to be announced!

palacenet.com