

JANUARY 16, 1973

## WSU Prof Speaks at Women's Forum On Socialization in Games, Language



Socialization through children's games, language and sex roles will continue the topics discussed during "Women: New Reflections," OU's winter forum program.

Lynda Ann Ewen, asst. prof. of sociology at Wayne State University, will discuss how oppressive structures develop in society and how they are institutionalized.

Her talk will be from 2-4 p.m., Jan. 16 in Varner Recital Hall.

She will examine how powerful this conditioning is and what the results of its elimination might be to society and the individual.

Ms. Ewen is co-author of *Landlords and Capitalists*, being published by Harper & Row, and is working on research concerning corporate involvement in Detroit's urban development.

She served on the Board of Directors of the Trinity Day Care Center ('71-'72), where she helped develop a radical education program for children.

The professor earned her M.A. and Ph.D. at the University of Wisconsin in sociology. She is a Detroit resident and has one daughter.

"Women: New Reflections" is open to the University community and may be taken for two credits (UC004).

Weekly sessions on Tuesday will include noted speakers and films while weekly Thursday sessions from 2-4 p.m. will offer discussion periods for those taking credit work.

## Former Administrative Intern Named to Employment Relations



Colleen Dolan

A second major appointment in the Office of Employment Relations was announced by Carl Westman, director.

Miss Margaret Colleen Dolan

was named labor relations and equal employment opportunity manager, effective immediately. She is returning to OU in a full time capacity after working here last summer as an administrative intern. As reported last week, Clair Magoon

was named wage and salary administration manager.

Westman expressed pleasure in obtaining both "enthusiastic and well qualified employees."

Miss Dolan comes to OU from the Lyndon B. Johnson School of Public Affairs in Austin, Texas. She is residing temporarily at 935 Gordon Lane, Birmingham.

She is a native of Amarillo, Texas, and holds a B.A. in political science from Mt. St. Scholastica College. She also served as a tax clerk for the City of Amarillo in 1971.

## 3 Programs Up For Final 'U' Senate Vote

Three important motions are coming up for the final vote at the Jan. 17 meeting of the University Senate in 128-130 OC.

The Senate will decide whether to authorize a master of science program in management and whether a new program leading to a bachelor of science degree in community and human development should be established. The creation of a University Center for Community and Human Development will also be voted upon.

### NEW MASTER'S PROGRAM DISCUSSED

The two-year master's program will be a master of science in management rather than the traditional master's of business administration, since the thrust of the program is to educate students for managerial roles in private and public sector enterprises.

The program stresses common elements of management rather than concentrating on traditional narrow subspecialties and will be under the direction of Dean Seeber, School of Economics and Management. The program will go before the Board of Trustees for approval. It is also being reviewed by the State Board of Education.

If approved, the bachelor of science degree in community and human development would train undergraduates in a variety of community service occupations. These include the emerging fields of manpower development and neighborhood redevelopment. The four-year program must also be approved by the Board of Trustees and the State Board of Education.

### COMMUNITY CENTER CONSIDERED

A University Center for Community

and Human Development is also up for a final vote. The faculty of the center, which would be under the above-mentioned program in community and human development, would have several powers. They would be mainly charged with developing programs of instruction for the B.S. in community and human development, however. The Center would also have a director and a council. The center, also, must be approved by the Board of Trustees and the State Board of Education.

### APPOINTMENT TO BE APPROVED

Two new appointments are also up for approval at the Senate meeting. Ms. Marion Orton, asst. prof. of mathematics, is being considered for the position of chairperson of the

Cont. pg. 4, col. 3





## "The Miracle Worker" -- Teaching Through Touch

*Far left: Hands paint a portrait. Kerri Lubell (as Helen Keller) touches Jennifer Harmon (as Annie Sullivan).*

*Left: Annie Sullivan teaches Helen about other children while Jerry Dahlmann (as Helen's step-brother, Fred Thompson) and Kirstin Mooney (as a blind girl) look and listen.*

*Right: Communication between Annie and Helen's sightless-soundless world.*

*Far right: A lesson in table manners as Helen.*

## Number One Boy Scout to Speak For Annual Meeting at OU

Alden G. Barber, chief scout executive in the United States and leader of the nation's largest youth organization, will be the featured speaker at the annual meeting of the Clinton Valley Council, Boy Scouts of America to be held Jan. 27 at OU.

Donald O'Dowd, president of OU and general chairman for the annual meetings, said, "Mr. Barber, the nation's No. 1 scout leader will be



*Alden Barber*

here to honor the 15,000th Scout in the Clinton Valley Council and to laud the many adult Scouters responsible for doubling the number of young people in the Scouting movement in Oakland and Macomb Counties."

The annual meetings will include an afternoon of conferences and seminars for all scouters and adult leaders with the sessions commencing at 3 p.m. in the Oakland Center.

Concurrently, the wives and others not involved in the seminars will be conducted on a tour and tea at Meadow Brook Hall.

A reception for Barber and his wife, Mitzi, will be held in the Fireside Lounge room from 5:30 to 6 p.m. The annual banquet will follow the reception with many outstanding community leaders and Scouters from the Clinton Valley Council.

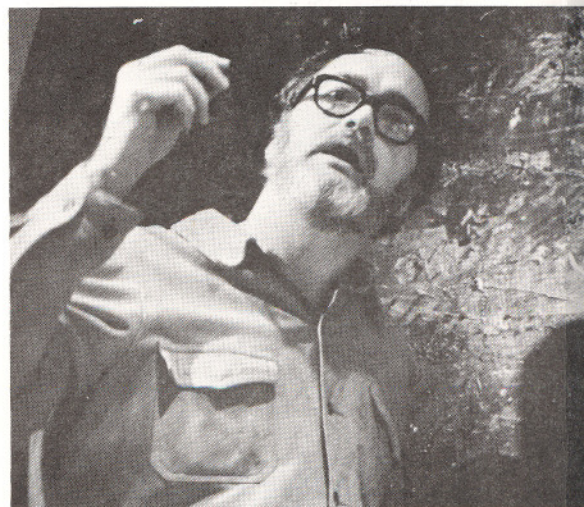
The seminar conferences and the banquet are open to the public with reservations being accepted at 682-7407 through the Scout Service Center.

## Gregory Wins Seat As Chairman of Caucus of Black Economists

Karl Gregory, assoc. prof. of economics and management, was recently elected Chairman of the Caucus of Black Economists for 1973, succeeding Charles Z. Williams, vice-chancellor for Academic Programs at UCLA.

The election was held during the annual meetings of the American Economic Assoc., Dec. 28-30 in Toronto.

The caucus is devoted to increasing the supply of Black economists



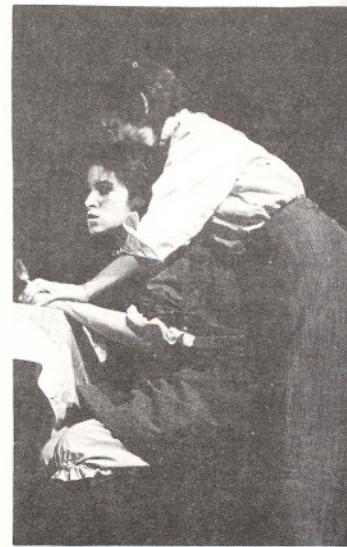
*ARTIST A*

*John Beardman, assoc. prof. of art, explaining paintings on display in the Faculty Art Exhibition of art, is also participating in the two-man show at the Meadow Brook Gallery.*

and to enhancing their professional status. It is an international organization with headquarters in Washington, D.C. and is funded by memberships, research grants and government contracts.

"Thus far," said Gregory, "the Caucus has been able to identify over 400 economists. There is an increasing number in the graduate school pipeline. Yet, we are a minor fraction of the over 13,000 persons in the profession."





## "The Miracle Worker" -- Teaching Through Touch

Kerri Lubell (as Helen Keller) touches about other children while Jerry Thompson) and Kirstin Mooney (as a

Right: Communication between Annie and Helen grows as Annie breaks into Helen's sightless-soundless world.  
Far right: A lesson in table manners sparks tension between Annie and Helen.

## Scout to Speak at OU

Concurrently, the wives and others not involved in the seminars will be conducted on a tour and tea at Meadow Brook Hall.

A reception for Barber and his wife, Mitzi, will be held in the Fireside Lounge room from 5:30 to 6 p.m. The annual banquet will follow the reception with many outstanding community leaders and Scouters from the Clinton Valley Council.

The seminar conferences and the banquet are open to the public with reservations being accepted at 682-7407 through the Scout Service Center.



### ARTIST AT WORK

John Beardman, assoc. prof. of art, explains the detailed texture in one of his paintings on display in the Faculty Art Exhibit. Alvern Lostetter Jr., asst. prof. of art, is also participating in the two-man show, which runs through Feb. 3 in the Meadow Brook Gallery.

## Gregory Wins Seat As Chairman of Caucus of Black Economists

Karl Gregory, assoc. prof. of economics and management, was recently elected Chairman of the Caucus of Black Economists for 1973, succeeding Charles Z. Williams, vice-chancellor for Academic Programs at UCLA.

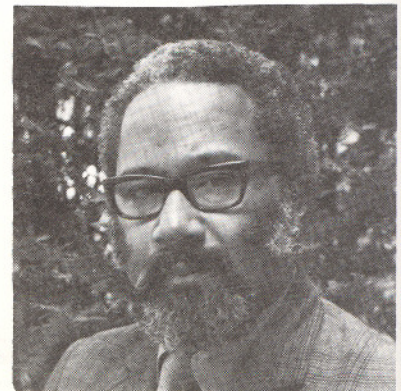
The election was held during the annual meetings of the American Economic Assoc., Dec. 28-30 in Toronto.

The caucus is devoted to increasing the supply of Black economists

and to enhancing their professional status. It is an international organization with headquarters in Washington, D.C. and is funded by memberships, research grants and government contracts.

"Thus far," said Gregory, "the Caucus has been able to identify over 400 economists. There is an increasing number in the graduate school pipeline. Yet, we are a minor fraction of the over 13,000 persons in the profession."

Karl  
Gregory





# Iodice Grant-in-aid Program Created by Two OU Alumni

Two OU alumni are giving the first \$100 to start a grant-in-aid program for foreign language study.

Two years ago, the Bastians gave the money to begin the Gladys B. Rapoport Award for students involved in government or student activities. Shoo-bee-doo won the award last year for his musical contribution to the University community.

Doug and Jill Bastian, 1968 graduates, feel they can best help OU by creating and maintaining the grant program. "It is called the Don Iodice Grant-In-Aid for Foreign Study, in honor of the educational contributions Mr. Iodice has made toward the development of the superior language program offered at Oakland University."

Jill Bastian notes that she "benefited greatly from the four month study-travel trip the French Travel-

## Simmons Named Assoc. Director for ACTION Grant

Robert Simmons, assoc. dean of the College of Arts and Sciences, was recently named associate director for the federally funded "University Year in ACTION Program."

The announcement was made by the Office of the Provost. George Fukushima, assoc. director of the Urban Affairs Center, is director of the \$11,849 planning grant, which is designed to encourage student involvement in the community.

"Currently, we are attempting to get an advisory committee together to help with the planning stage. I will be assisting Mr. Fukushima in coordinating the program and in making sure students can get 32 credits in a calendar year while in the program," Simmons said.

## Tickets On Sale

Tickets now are on sale for the ADA Studio Company production of "The Winter's Tale" by Shakespeare, opening Jan. 26 in the Studio Theatre, Varner Hall.

The play runs from Jan. 26-29, Feb. 1-4 and Feb. 8-11. Curtain is 8:15 nightly, 6:30 p.m. Sundays.

ers took to Europe in 1966." She and her husband are now making it possible for other students to have the same experience.

The grant is open to any student:

- who is a language major,
- who has completed his sixth semester of language training,
- who can demonstrate proficiency in listening comprehension and speaking at a level which will allow his enrollment in an intermediate level language program at a foreign university,
- who is accepted for a summer language program of at least six weeks given in a foreign university,
- who demonstrates some need for the grant-in-aid and applications must be received by April, 1973.

The grant-in-aid may amount to one-third to one-half of the costs, including transportation, but would not, in any case, exceed \$250-\$400 per student.

Recipients will be interviewed and chosen by a committee of language department staff. More than one grant may be awarded each year, however, that will depend on the amount of contributions to date each year.

Donations are needed to make the program a success and can be mailed to the Don Iodice Grant-In-Aid for Foreign Study, Financial Aids Office.

## Harding Gets Seat On Senate Committee

Clifford Harding, was elected to an at-large seat on the University Tenure and Appointment Policy Committee (UTAPC) which expires Dec. 31, 1975.

Edward Heubel was elected to fill the unexpired term of Ms. Williamson, an at-large seat, whose term expires Dec. 31, 1973.

Other members of UTAPC are--

	Term Expires, Dec. 31 of:	Elected by:
R. Howes	1973	Arts & Sci.
To be elected	1975	Eng.
E. Botsas	1973	Econ. & Mgt.
L. Reilly	1974	Library
S. Graber	1974	Educ.
M. Chernov	1974	At-large





# campus calendar

Extension  
73180

Tuesday January 16	12 noon	Noon Recital Series, Operatic
	2-4PM	University Forum, <i>LYNDA ANN EWEN</i> , Socialization-children's games, language, sex roles, Varner Hall.
	1-5PM	Meadow Brook Art Gallery, Faculty Exhibition
	7:30-8:30PM	Meadow Brook Art Gallery, Faculty Exhibition
	8:00PM	SEFS, <i>JULES AND JIM</i> , 201 Dodge Hall
Wednesday January 17	8:30PM	Meadow Brook Theatre, <i>THE MIRACLE WORKER</i>
	12 noon	Flash Gordon series, Abstention
	2:00PM	Meadow Brook Theatre matinee, <i>THE MIRACLE WORKER</i>
	1-5PM	Meadow Brook Art Gallery, Faculty Exhibition
	7:30-8:30PM	Meadow Brook Art Gallery, Faculty Exhibition
Thursday January 18	8:00PM	Basketball, Grand Valley, home
	8:30PM	Meadow Brook Theatre, <i>THE MIRACLE WORKER</i>
	1-5PM	Meadow Brook Art Gallery, Faculty Exhibitions
	4:00PM	Last Lecture Series, <i>TOM ASTON</i> , Gold Room
	7:00PM	Women's Swimming, Western Michigan, away
Friday January 19	7:30-8:30PM	Meadow Brook Art Gallery, Faculty Exhibition
	8:00PM	SEFS, <i>FLUTE</i> , 201 Dodge Hall
	8:30PM	Meadow Brook Theatre, <i>THE MIRACLE WORKER</i>
	1-5PM	Meadow Brook Art Gallery, Faculty Exhibition
	7:00PM	Swimming, Ferris State, home
Saturday January 20	7:30-8:30PM	Meadow Brook Art Gallery, Faculty Exhibition
	8:00PM	SEFS, <i>KLUTE</i> , 201 Dodge Hall
	8:30PM	Meadow Brook Theatre, <i>THE MIRACLE WORKER</i>
	2:00PM	Swimming, U. of W. Ontario, home
	2-6PM	Meadow Brook Art Gallery, Faculty Exhibitions
Sunday January 21	6:00PM	Meadow Brook Theatre, <i>THE MIRACLE WORKER</i>
	8:00PM	SEFS, <i>KLUTE</i> , 201 Dodge Hall
	1-4PM	Meadow Brook Hall tours
	2-6:30PM	Meadow Brook Art Gallery, Faculty Exhibitions
	6:30PM	Meadow Brook Theatre, <i>THE MIRACLE WORKER</i>
Monday January 22	8:00PM	SEFS, <i>KLUTE</i> , 201 Dodge Hall

## CAMPUS TICKET OFFICE

SEFS membership cards	OU Recital Series
American Youth Fare cards	Hilberry and Bonstelle Theatre tickets
Metro Passbooks	Masonic Temple events
Entertainment '73	ADA tickets
SET tickets	These Days mini-passbooks
Meadow Brook Theatre	



**MECHANICAL MARVEL**-- from left, Ralph C. Mobley, prof. of physics, and Don Cochran, graduate student in physics, discuss a proton accelerator. The newly-installed machine speeds up ionized hydrogen to 500 thousand electron volts.

OU, an official publication of Oakland University, Rochester, Michigan, is published weekly during the school year and distributed free within the university community. Its content is under the editorial control of the Office of University Relations, which is charged with exercising editorial judgment over all articles. Kathie Burke, ed.

## Senate Cont.

Academic Standing and Honors Committee, replacing Clifford Harding, prof. in Biological Sciences.

A replacement will be elected to the Steering Committee to replace Paul Tomboulia, chairman of the Dept. of Chemistry.

There will be a final vote taken on a motion that the Senate recommend to the President the attachment of the 1973-74 University calendar to the agenda.

The tentative faculty agreement for 1972-73 holds the Senate responsible for recommending specific dates in that calendar to the President. Many University offices and activities have an immediate need for 1973-74 dates.

## Insurance Explained

University employees are warned to keep a careful eye on personal possessions brought on campus.

Richard Light, asst. vice-president for business, notes that University insurance coverage does not extend to items of personal property brought onto campus. Loss or damage to those items is the responsibility of the individual.

Insurance coverage does not extend to such items because the University has no knowledge of the presence or value of the property and has no ability to control their safekeeping, since they remain the property of the individual, Light states.

He added, however, that items such as typewriters, tape recorders, musical instruments, personal library books, pieces of scientific equipment and handtools can usually be insured by way of a rider to the individual's homeowner or tenant policy.

MEETING  
OAKLAND UNIVERSITY  
BOARD OF TRUSTEES  
Monday, Jan. 22,  
GOLD ROOM, O.C.  
7:30 PM